



## INSTRUCTION BULLETIN

No. 340109  
Machines: 6080/3640  
Published: 9-99/03  
System: SWEEPING

**NOTE: DO NOT DISCARD the Parts List from the Instruction Bulletin. Place the Parts List in the appropriate place in your machine manual for future reference. Retaining the Parts List will make it easier to reorder individual parts and will save you the cost of ordering an entire kit.**

*NOTE: Numbers in parenthesis ( ) are reference numbers for parts listed in Bill of Materials.*

Installation Instructions for Kit number 378811 (RH), 378812 (LH)

### SYNOPSIS / PROBLEM:

This kit contains the parts needed to install side skirt hardware and a string guard on the model 6080 and 3640 sweepers. Please follow step-by-step instructions.

### SPECIAL TOOLS / CONSIDERATIONS: None

(Estimated time to complete: 2 hours)

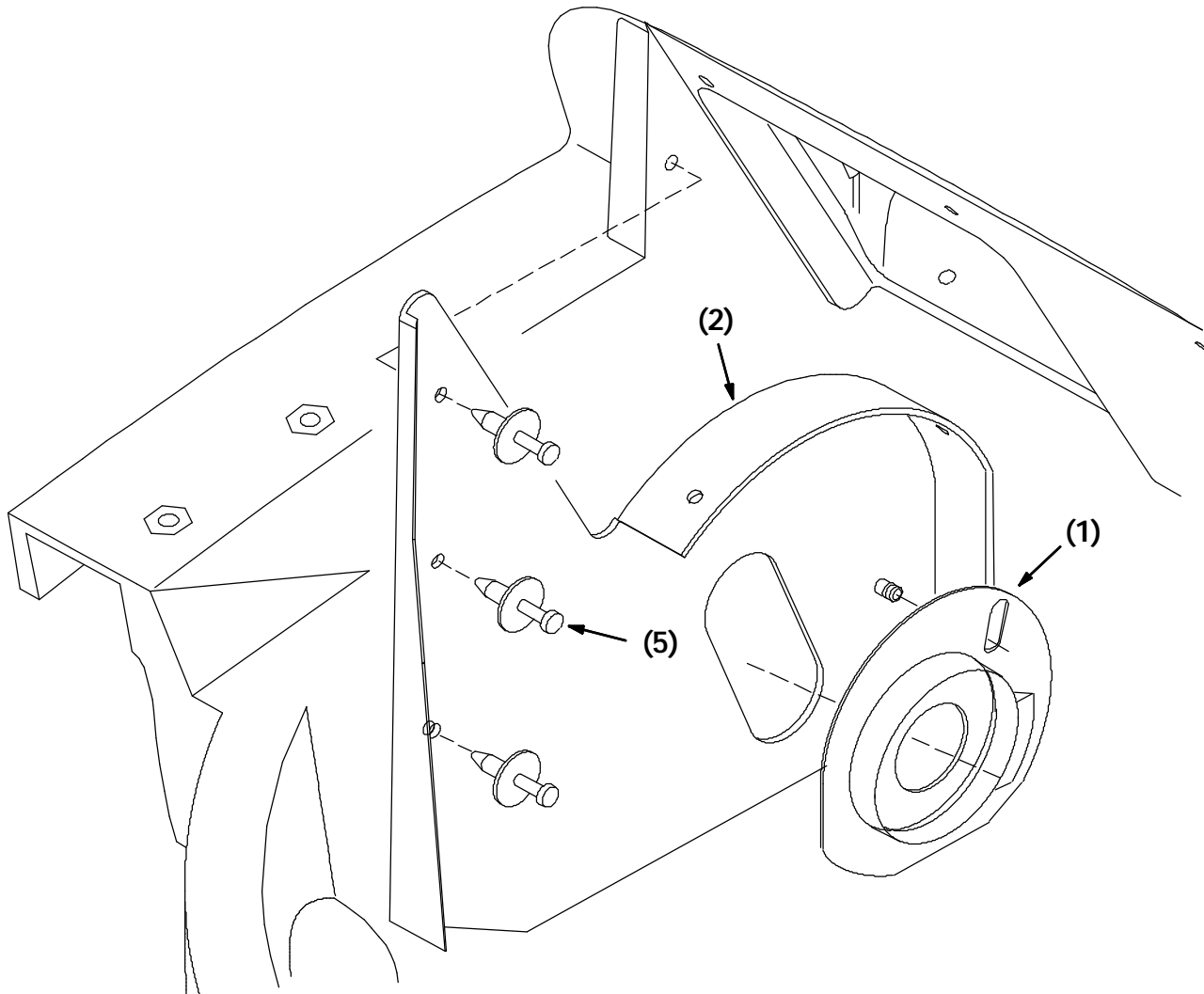
### INSTALLATION OF RH STRING GUARD:

(Refer to FIG. 1 and 3)

**FOR SAFETY: Before leaving or servicing machine, stop on level surface and set parking brake. Then turn off machine and remove key.**

1. Remove the debris hopper from the machine and drop the main brush to the full float position.
2. Go to the left side of the machine and locate the main brush idler side knob pin. This pin is located in the brush arm, just ahead of the LH drive wheel.
3. Push in on the knob pin and turn at the same time. Remove the pin from the brush arm.
4. Remove the main brush from the machine by pulling the left side of the brush forward, then, pull the brush off the drive plug on the right side.
5. Remove the screw holding the brush drive plug to the pulley shaft. Remove the drive plug and square key.
6. Remove and discard the plastic rivets holding the RH skirt to the machine. Remove and discard the existing drive side skirt. (Refer to FIG. 1 and 3)
7. Assemble the RH string guard (1) onto the new drive side skirt (2). **Make sure the string guard is flat before installing.** (Refer to FIG. 1 and 3)
8. Install the new drive side skirt assembly on the machine. Use the seven new plastic rivets (6). (Refer to FIG. 1 and 3)
9. Raise the RH wheel off the floor. Remove the screw, hub cap, and tire/wheel assembly from the axle.

10. Locate the hole in the lower corner of the new drive side skirt (2). Use the hex screw (5) and fender washer (4) to secure the lower corner of the skirt to the corner of the machine frame. Hand tighten the screw. (Refer to FIG. 1 and 3)
11. Reinstall the RH rear tire/wheel assembly and lower the machine to the floor.
12. Reinstall the main brush drive plug and hex screw. Tighten to 7.6 - 9.9 Nm (6 - 8 ft lb).



**FIG. 1 - RH Skirt Assembly**

13. Reinstall the main brush and idler pin.
14. Reinstall the hopper. Operate the machine and check the new skirt for proper operation.

**BILL OF MATERIALS FOR SKIRT KIT 378811 (RH)**

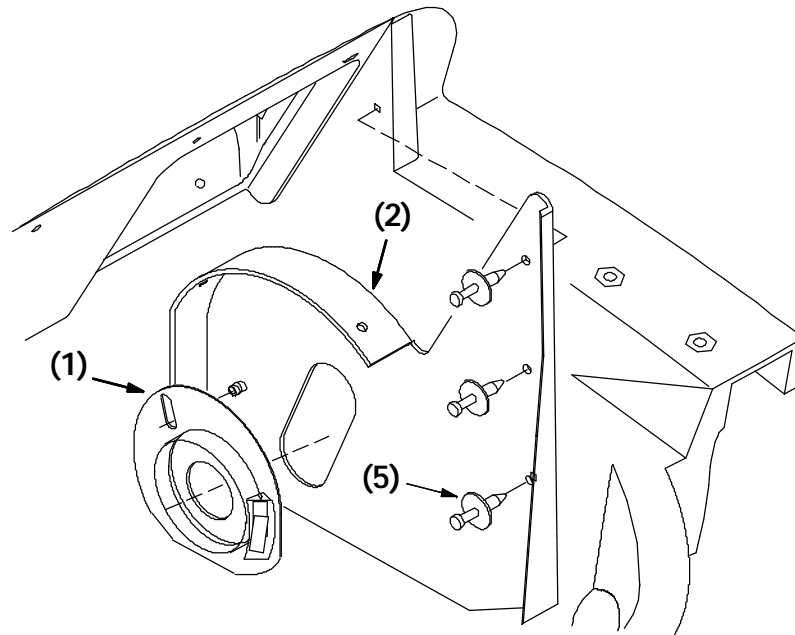
Ref.	TENNANT Part No.	Description	Qty.
1	378806	RH string guard	1
2	378809	Drive side skirt	1
3	41178	Fender washer	1
4	20394	#10 sheetmetal screw	1
5	72968	Plastic rivet	7

## INSTALLATION OF LH STRING GUARD:

(Refer to FIG. 2 and 3)

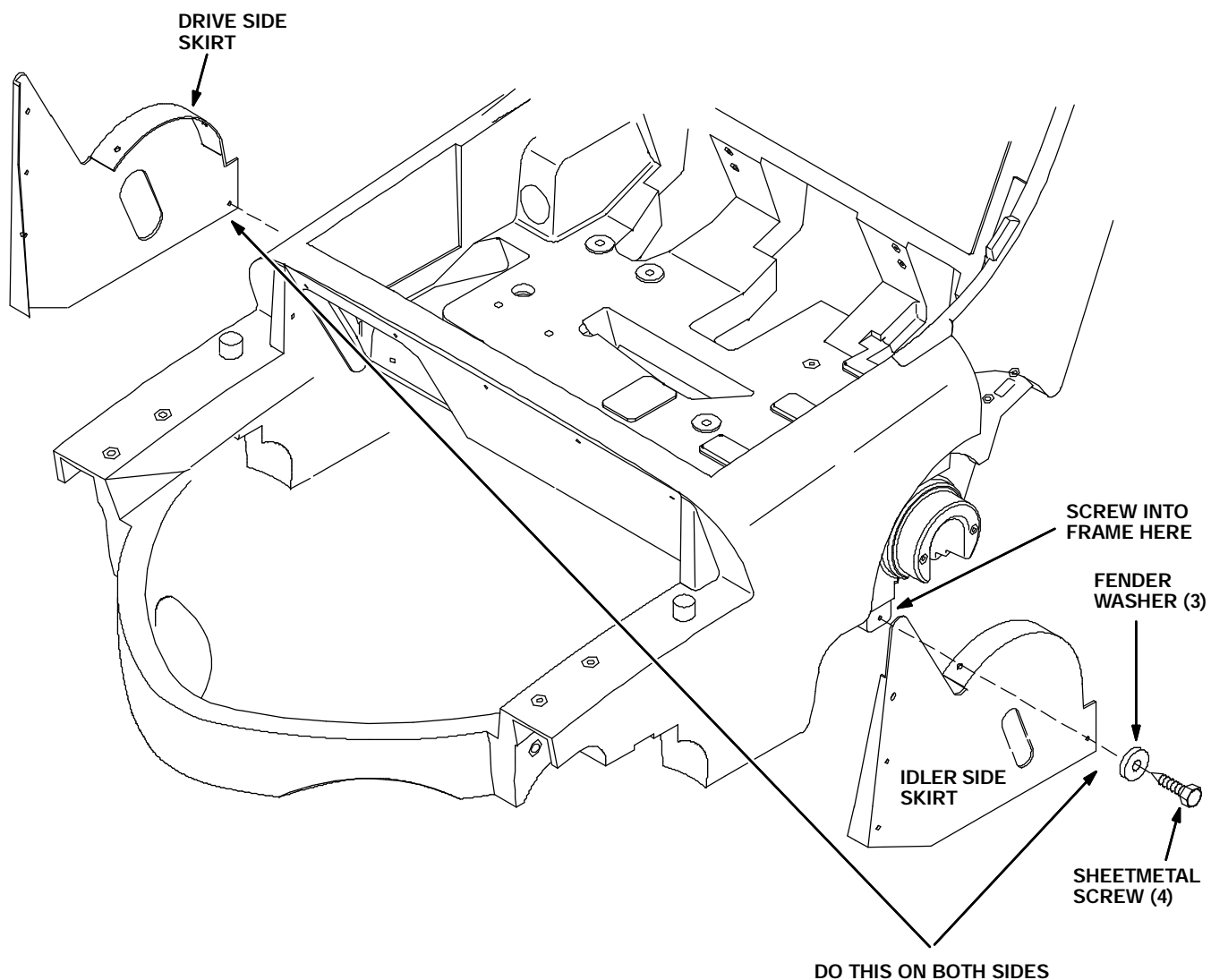
**FOR SAFETY: Before leaving or servicing machine, stop on level surface and set parking brake. Then turn off machine and remove key.**

1. Remove the debris hopper from the machine and drop the main brush to the full float position.
2. Go to the left side of the machine and locate the main brush idler side knob pin. This pin is located in the brush arm, just ahead of the LH drive wheel.
3. Push in on the knob pin and turn at the same time. Remove the pin from the brush arm.
4. Remove the main brush from the machine by pulling the left side of the brush forward, then, pull the brush off the drive plug on the right side.
5. Remove and discard the seven plastic rivets holding the LH skirt to the machine. Remove and discard the existing idler side skirt. (Refer to FIG. 2 and 3)
6. Assemble the LH string guard (1) onto the new idler side skirt (2). **Make sure the string guard is flat before installing.** (Refer to FIG. 2 and 3)



**FIG. 2 - LH Skirt Assembly**

7. Install the new idler side skirt assembly on the machine. Use the seven new plastic rivets (6). (Refer to FIG. 2 and 3)
8. Raise the RH wheel off the floor. Remove the screw, hub cap, and tire/wheel assembly from the axle.
9. Locate the hole in the lower corner of the new idler side skirt (2). Use the hex screw (5) and fender washer (4) to secure the lower corner of the skirt to the corner of the machine frame. Hand tighten the screw. (Refer to FIG. 2 and 3)
10. Reinstall the RH rear tire/wheel assembly and lower the machine to the floor.
11. Reinstall the main brush and idler pin.
12. Reinstall the hopper. Operate the machine and check the new skirt for proper operation.



**FIG. 3 - Screw And Fender Washer**

**BILL OF MATERIALS FOR SKIRT KIT 378812 (LH)**

Ref.	TENNANT Part No.	Description	Qty.
1	378807	LH string guard	1
2	378810	Idler side skirt	1
3	41178	Fender washer	1
4	20394	#10 sheetmetal screw	1
5	72968	Plastic rivet	7

TENNANT COMPANY  
P. O. Box 1452  
Minneapolis, MN 55440-1452