



# INSTRUCTION BULLETIN

No. 340089

Machine: 6080 G/LP/E  
3640 G/LP/E

Published: 09-2009  
Rev. 04

**NOTE: DO NOT DISCARD the Parts List from the Instruction Bulletin. Place the Parts List in the appropriate place in your machine manual for future reference. Retaining the Parts List will make it easier to reorder individual parts and will save you the cost of ordering an entire kit.**

*NOTE: Numbers in parenthesis ( ) are reference numbers for parts listed in Bill of Materials.*

Installation Instructions for Kit number 378763(24V), 80267(12V) and 398438(12V w/o battery)

## **SYNOPSIS / PROBLEM:**

This kit contains the parts needed to install a left hand side brush on the model 6080 and 3640 sweepers. Please follow step-by-step instructions.

**SPECIAL TOOLS / CONSIDERATIONS:** Hand drill, .312 drill bit

(Estimated time to complete: 2 hours)

## **INSTALLATION:**

(Refer to FIG. 1 and 2)

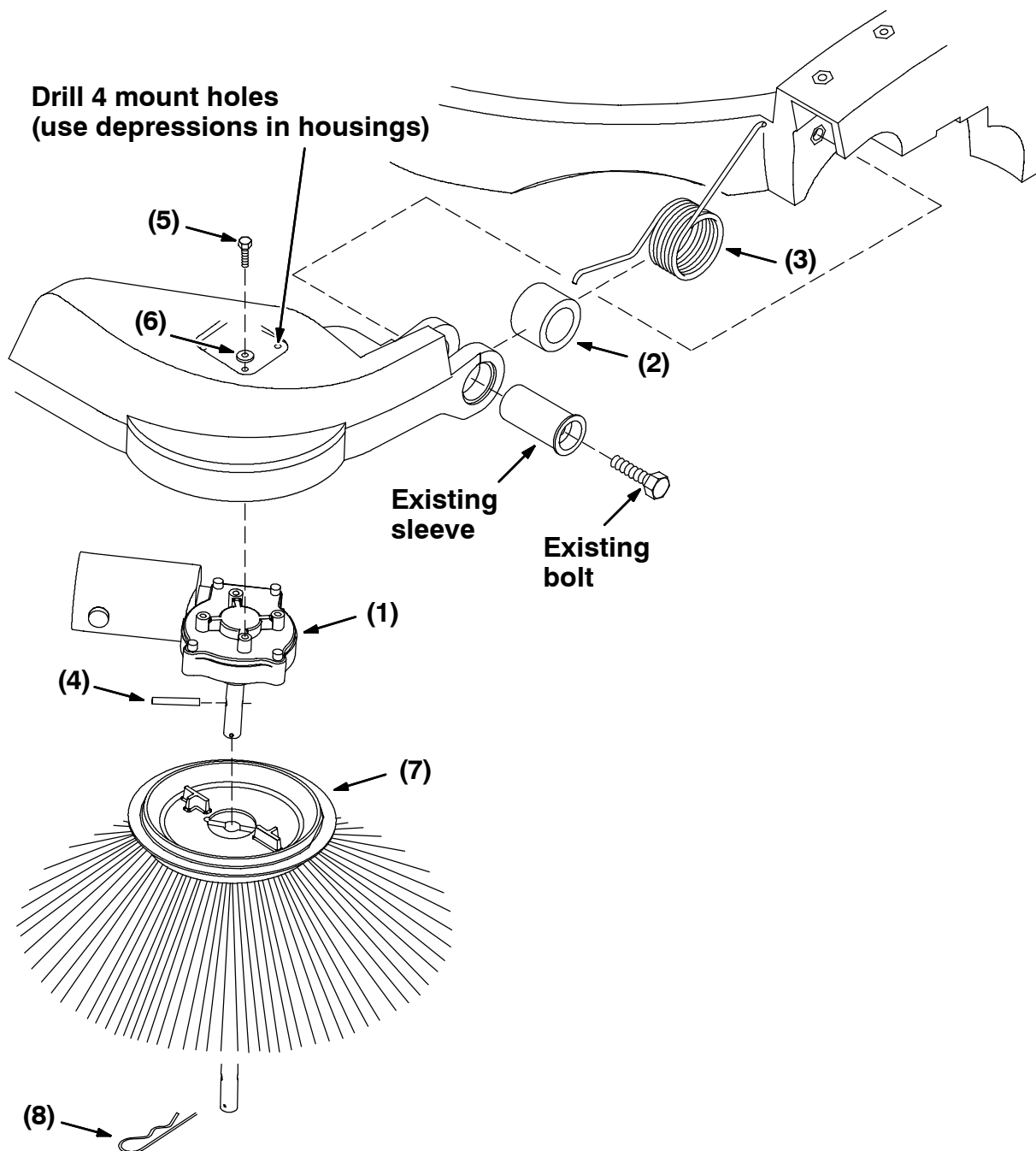
**FOR SAFETY: Before leaving or servicing machine, stop on level surface and set parking brake. Then turn off machine and remove key.**

1. Open the main machine cover and engage the prop rod.
2. **GAS/LP MACHINE:** Remove the existing battery and install the new , larger battery (7) provided in this kit. Use the new rubber strap (9) to hold down the new battery. Install the new terminal covers (8) onto the two battery cables. Leave the battery cables unhooked for now. (Refer to FIG. 2)

*NOTE: If using kit #398438 (w/o battery), it is recommended to use a 130amp hour battery with dual side brushes.*

3. Lower the side brush housing. (Refer to FIG. 1 and 2)
4. Remove the hex screw and sleeve from the left side of the side brush housing.  
(Refer to FIG. 1 and 2)
5. Position the tension spring in the opening where the sleeve is inserted. Once the spring is positioned correctly--place the sleeve through the arm holes and the center of the tension spring. Bring that end up carefully, making sure the spring is pulled back and one end placed down the main machine frame. Line up the hole in the sleeve with the threaded insert in the main frame. Install the hex screw, Tighten both screws to 28 - 36 Nm (20 - 26 ft lb). (Refer to FIG. 1 and 2)
6. Use the depressions or drill points in the brush housing to locate and drill the four left hand side brush mount holes. Drill the four holes .312 in. diameter.
7. Install the roll pin (4) in the hole in the side brush motor shaft. (Refer to FIG. 1 and 2)

8. Wrap the wires around the motor and position the side brush motor and gear box (1) in the front, left side of the side brush housing. Line up the new mount holes in the side brush housing with the mount holes in the side brush motor (1). (Refer to FIG. 1 and 2)
9. Install the four hex screws (5) and washers (6). Tighten to 7.6 - 9.9 Nm (6 - 8 ft lb). (Refer to FIG. 1 and 2)
10. Locate the left hand side brush motor electrical harness connector. This connector is tied up with the main machine harness. The wires are 18A/ORANGE and 13K/BLACK. Plug this connector into the new side brush motor.
11. Position the new side brush (7 or 10) onto the side brush motor shaft. Install the hair pin (8 or 11) into the motor shaft under the side brush. (Refer to FIG. 1 and 2)

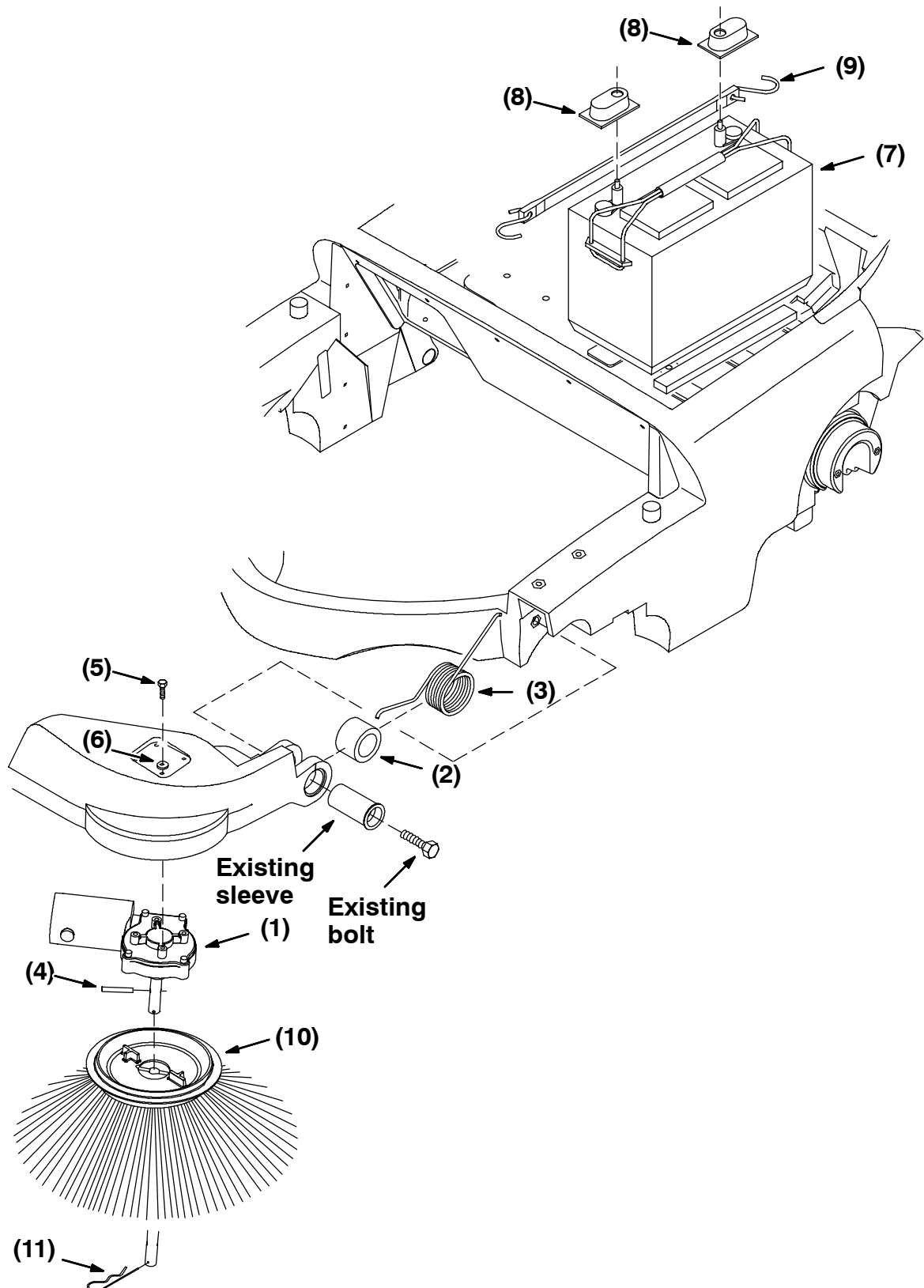


**FIG. 1 - Left Hand Side Brush Assembly 378763 (24V)**

12. Raise the side brush lever.

13. **GAS/LP MACHINE:** Reconnect the battery cables.

14. Start the machine and operate the sweeping function. Check the left hand side brush for proper operation. (Refer to FIG. 1 and 2)



**FIG. 2 - Left Hand Side Brush Assembly 80267 (12V)**

**BILL OF MATERIALS FOR DUAL SIDE BRUSH KIT 80267 (12V)**

<b>Ref.</b>	<b>TENNANT Part No.</b>	<b>Description</b>	<b>Qty.</b>
1	1008276	MOTOR, ELE, 12VDC 0068RPM 0.08HP 04.5A	1
2	80321	SLEEVE, P/M, 1.45B 2.15D 1.6L [STEAM]	1
3	379206	SPRING, TORS, 2.9 ID .17WIR 08.3COIL	1
4	11516	PIN, ROLL, .250D X 1.75L, .250/.256	1
5	06942	SCREW, HEX, M6 X 1.00 X 16, 8.8	4
6	32490	WASHER, FLAT, 0.25, STD	4
7	130869	BATTERY, 12VDC 0130AH [30XHS-WNT]	1
8	45962	CAP, PLSTC, .04 1.38 X 2.30 0.5L	2
9	33671	STRAP, RBR, TIE-DOWN, 19.0L, 2/ HOOK	1
10	80042	BRUSH, DISK, SWP, 16.5D, PYP	1
11	02942	PIN, HAIR, COTTER, 0.62D .120 WIR	1

**BILL OF MATERIALS FOR DUAL SIDE BRUSH KIT 398438 (12V w/o battery)**

<b>Ref.</b>	<b>TENNANT Part No.</b>	<b>Description</b>	<b>Qty.</b>
1	1008276	MOTOR, ELE, 12VDC 0068RPM 0.08HP 04.5A	1
2	80321	SLEEVE, P/M, 1.45B 2.15D 1.6L [STEAM]	1
3	379206	SPRING, TORS, 2.9 ID .17WIR 08.3COIL	1
4	11516	PIN, ROLL, .250D X 1.75L, .250/.256	1
5	06942	SCREW, HEX, M6 X 1.00 X 16, 8.8	4
6	32490	WASHER, FLAT, 0.25, STD	4
7	45962	CAP, PLSTC, .04 1.38 X 2.30 0.5L	2
8	33671	STRAP, RBR, TIE-DOWN, 19.0L, 2/ HOOK	1
9	80042	BRUSH, DISK, SWP, 16.5D, PYP	1
10	02942	PIN, HAIR, COTTER, 0.62D .120 WIR	1

**BILL OF MATERIALS FOR DUAL SIDE BRUSH KIT 378763 (24V)**

<b>Ref.</b>	<b>TENNANT Part No.</b>	<b>Description</b>	<b>Qty.</b>
1	1056182	MOTOR, ELE, 24VDC 0068RPM 0.08HP 04.5A	1
2	80321	SLEEVE, P/M, 1.45B 2.15D 1.6L [STEAM]	1
3	379206	SPRING, TORS, 2.9 ID .17WIR 08.3COIL	1
4	11516	PIN, ROLL, .250D X 1.75L, .250/.256	1
5	06942	SCREW, HEX, M6 X 1.00 X 16, 8.8	4
6	32490	WASHER, FLAT, 0.25, STD	4
7	80042	BRUSH, DISK, SWP, 16.5D, PYP	1
8	02942	PIN, HAIR, COTTER, 0.62D .120 WIR	1

TENNANT COMPANY  
P. O. Box 1452  
Minneapolis, MN 55440-1452