



INSTRUCTION BULLETIN

No. 340075
Machine: 6080/3640
Published: 9-99/01
System: SWEEPING

NOTE: DO NOT DISCARD the Parts List from the Instruction Bulletin. Place the Parts List in the appropriate place in your machine manual for future reference. Retaining the Parts List will make it easier to reorder individual parts and will save you the cost of ordering an entire kit.

NOTE: Numbers in parenthesis () are reference numbers for parts listed in Bill of Materials.

Installation Instructions for Kit number 80249

SYNOPSIS / PROBLEM:

This kit contains the parts needed to install a hopper dump assist kit on the model 6080 and 3640 sweepers. This kit will ease the dumping procedure of a full debris hopper.

Please follow step-by-step instructions.

SPECIAL TOOLS / CONSIDERATIONS: None

(Estimated time to complete: 1 hour)

INSTALLATION:

(Refer to FIG. 1)

FOR SAFETY: Before leaving or servicing machine, stop on level surface and set parking brake. Then turn off machine and remove key.

1. Remove the debris hopper from the machine. (Refer to FIG. 1)
2. Remove the four pan screws from the top of the hopper. Make sure to retain the shield and the four nuts and washers from the inside of the hopper.
3. Install the two hopper assist brackets (1) on top of the hopper. (Refer to FIG. 1)
4. Install the wheels (6) on the hopper assist brackets (1). Use the hopper assist shaft (4) and two cotter pins (5). (Refer to FIG. 1)
5. Install the hopper assist handle (2) on top of the brackets using two clevis pins (3) and two cotter pins (5). (Refer to FIG. 1)
6. Use the dimensions in FIG. 1 to mark and drill the two .375 in. holes in the front of the hopper. (Refer to FIG. 1)
7. Pound the two wear buttons (7) into the holes drilled in step 6. (Refer to FIG. 1)
8. Reinstall the debris hopper in the machine.

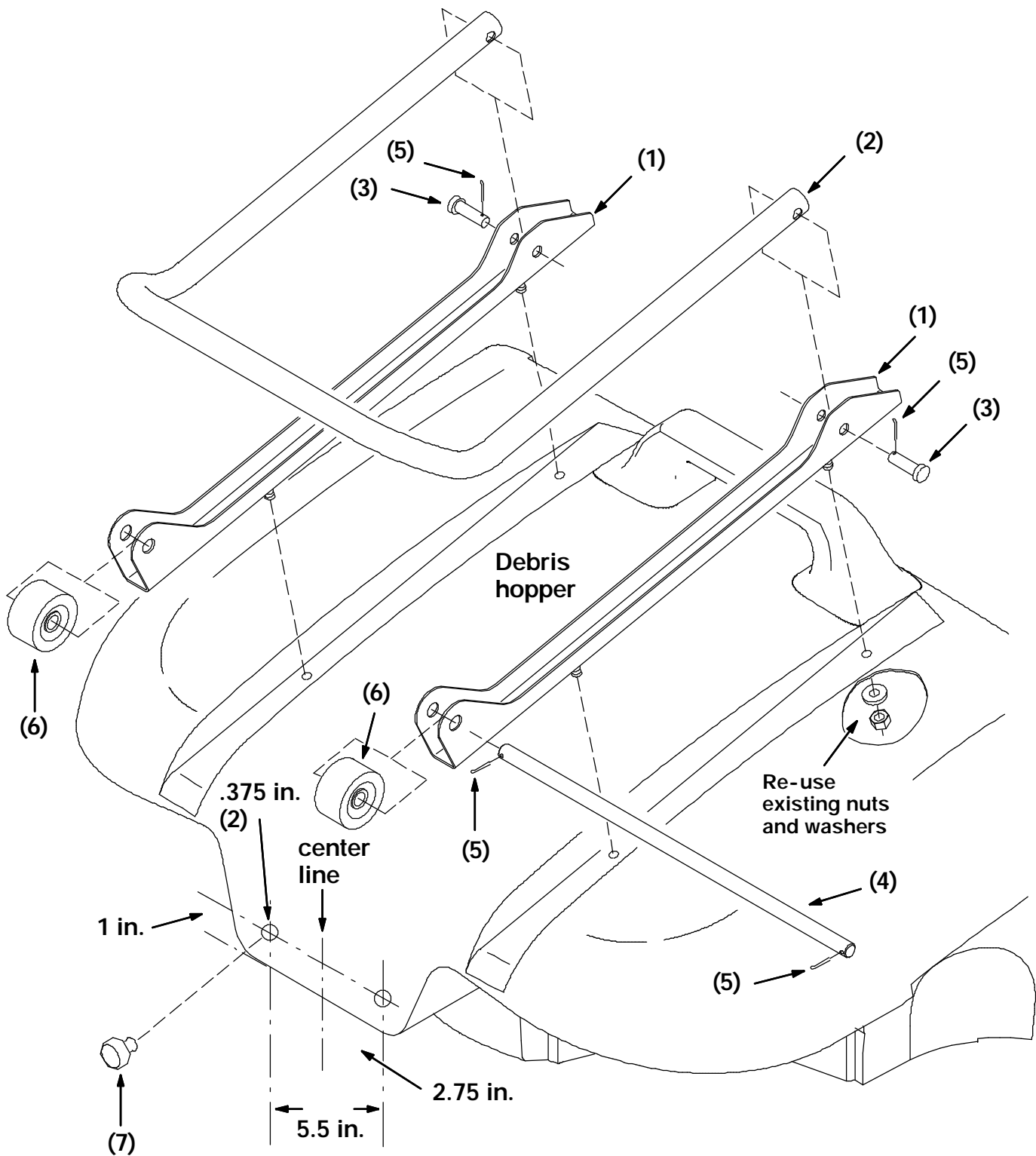


FIG. 1 - Dump Assist Kit Assembly

BILL OF MATERIALS FOR HOPPER DUMP ASSIST KIT 80249

Ref.	TENNANT Part No.	Description	Qty.
1	80960	Hopper assist bracket	2
2	80961	Hopper assist handle	1
3	29557	Clevis pin, .37x1.31	2
4	80289	Hopper assist shaft	1
5	08346	Cotter pin	4
6	222403	2 in. wheel	2
7	80300	Wear button	2

TENNANT COMPANY
P. O. Box 1452
Minneapolis, MN 55440-1452