



INSTRUCTION BULLETIN

No. 340069
Machine: 6080/3640
Published: 11-99/02
System: OPTIONS

NOTE: DO NOT DISCARD the Parts List from the Instruction Bulletin. Place the Parts List in the appropriate place in your machine manual for future reference. Retaining the Parts List will make it easier to reorder individual parts and will save you the cost of ordering an entire kit.

NOTE: Numbers in parenthesis () are reference numbers for parts listed in Bill of Materials.

Installation Instructions for Kit number 80252

SYNOPSIS / PROBLEM:

This kit contains the parts needed to install a wide track wheel kit on the model 6080 and 3640 sweepers. Please follow step-by-step instructions.

SPECIAL TOOLS / CONSIDERATIONS: None

(Estimated time to complete: 3 hours)

INSTALLATION:

(Refer to FIG. 1, 2, and 3)

FOR SAFETY: Before leaving or servicing machine, stop on level surface and set parking brake. Then turn off machine and remove key.

1. Remove the debris hopper from the machine. Remove and retain the hardware holding the skirt and retainer strip to the hopper. Remove and retain the fire shield from inside the hopper. Discard the hopper and retainer strip. Retain the skirt. (Refer to FIG. 1)
2. Install the wear plate (12) on the bottom of the new hopper (11). Use the five nuts (13) and five washers (14). Hand tighten tight. (Refer to FIG. 4)
3. Use the hardware removed in step 1 to install the old skirt and new retainer (16) onto the wear plate (12). Hand tighten tight. (Refer to FIG. 4)
4. Raise the front of the machine and place blocks under the frame.
5. Remove the two hex screws holding each of the front casters on the machine frame. Remove and discard both casters. Retain the hardware. (Refer to FIG. 1)
6. Install the two new wider casters (1). Re-use the hardware removed in step 5. Tighten to 18 - 24 Nm (15 - 20 ft lb). (Refer to FIG. 4)
7. Remove the blocks and lower the front of the machine.
8. Raise the rear of the machine and place blocks under the frame.
9. Remove the flat head screw and spacer washer holding each hub cap and wheel to the axle. Remove the wheel and plastic hub assembly from both sides. (Refer to FIG. 1)
10. Remove the four hex screws holding the plastic hub to each wheel. Remove and discard the wheel and tire assembly. (Refer to FIG. 1)

11. Position the new wheel adaptors (7) onto the plastic hubs. Use the new hex screws (6) to attach the plastic hub to the adaptor (7). Place a small amount of thread adhesive (18) on the threads of the hex screw (6). Tighten to 7.6 – 9.9 Nm (5.6 – 7.3 ft lb) (Refer to FIG. 4)

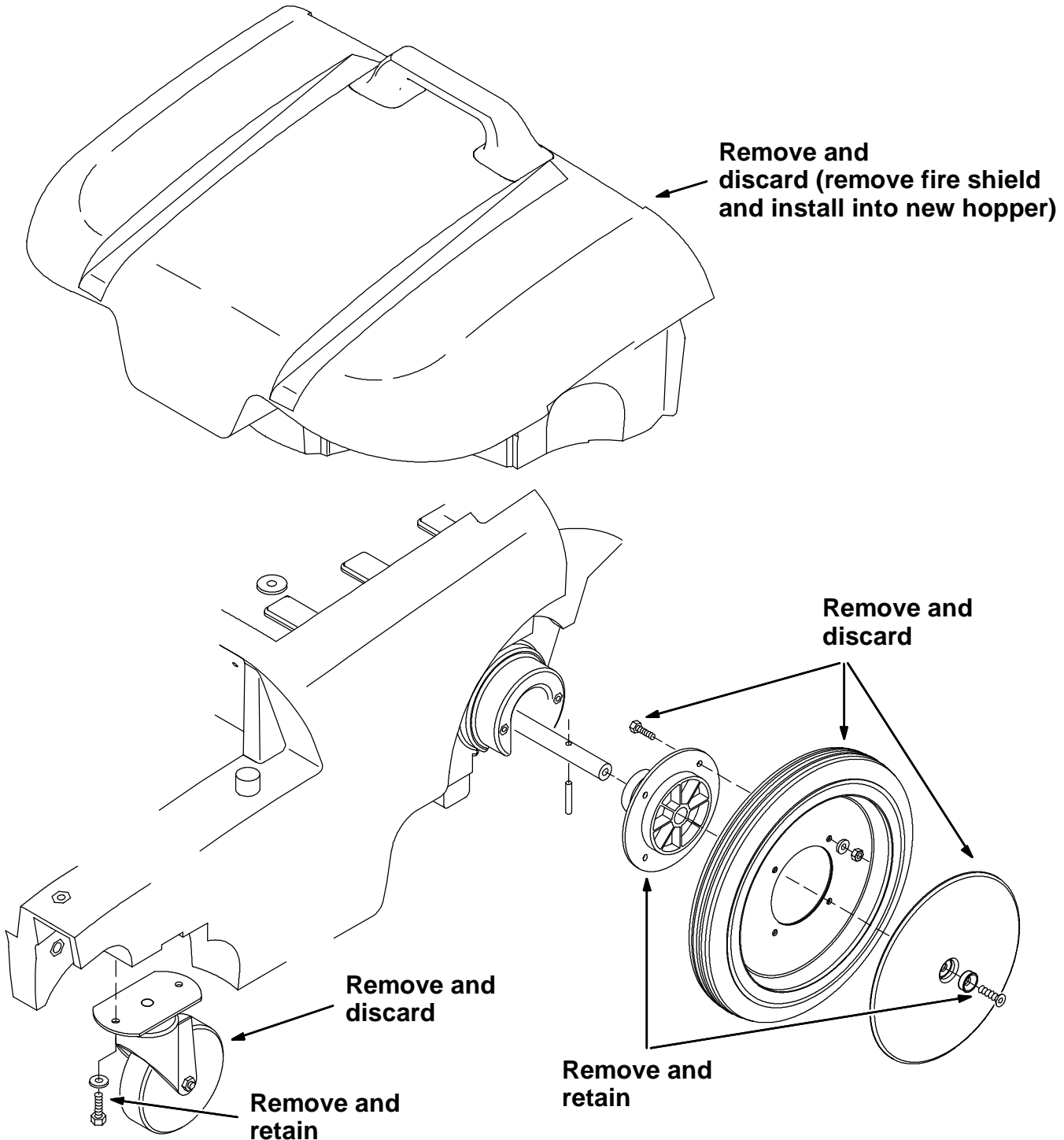


FIG. 1 - Existing 6080 Parts To Remove

12. Position the new plate (9) on the side of the wheel adaptor (7) opposite the plastic hub. Line up the three holes in the plate (9) with the three holes in the adaptor (7). (Refer to FIG. 4)

13. Position the new tire and rim assembly (8) on top of the adaptor (7) and plate (9). Line up the three holes in the tire rim (8) with the three holes in the plate (9) and adaptor (7). (Refer to FIG. 4)
14. Install the three lug bolts (10) in each tire rim. Tighten to 90 - 117 Nm (65 - 85 ft lb). (Refer to FIG. 4)
15. Install the tire/adaptor/hub assembly back on the axle. Make sure the pin in the axle lines up with the cross slot in the plastic hub. Reinstall the flat head screw and spacer washer that was removed in step 9. Place a small amount of thread adhesive (18) on the threads of the flat head screw. Tighten to 18 - 24 Nm (15 - 20 ft lb). (Refer to FIG. 4)
16. Install the plug buttons (17) in the centers of the new wheel assemblies (8). Remove the blocks and lower the machine to the floor. (Refer to FIG. 4)

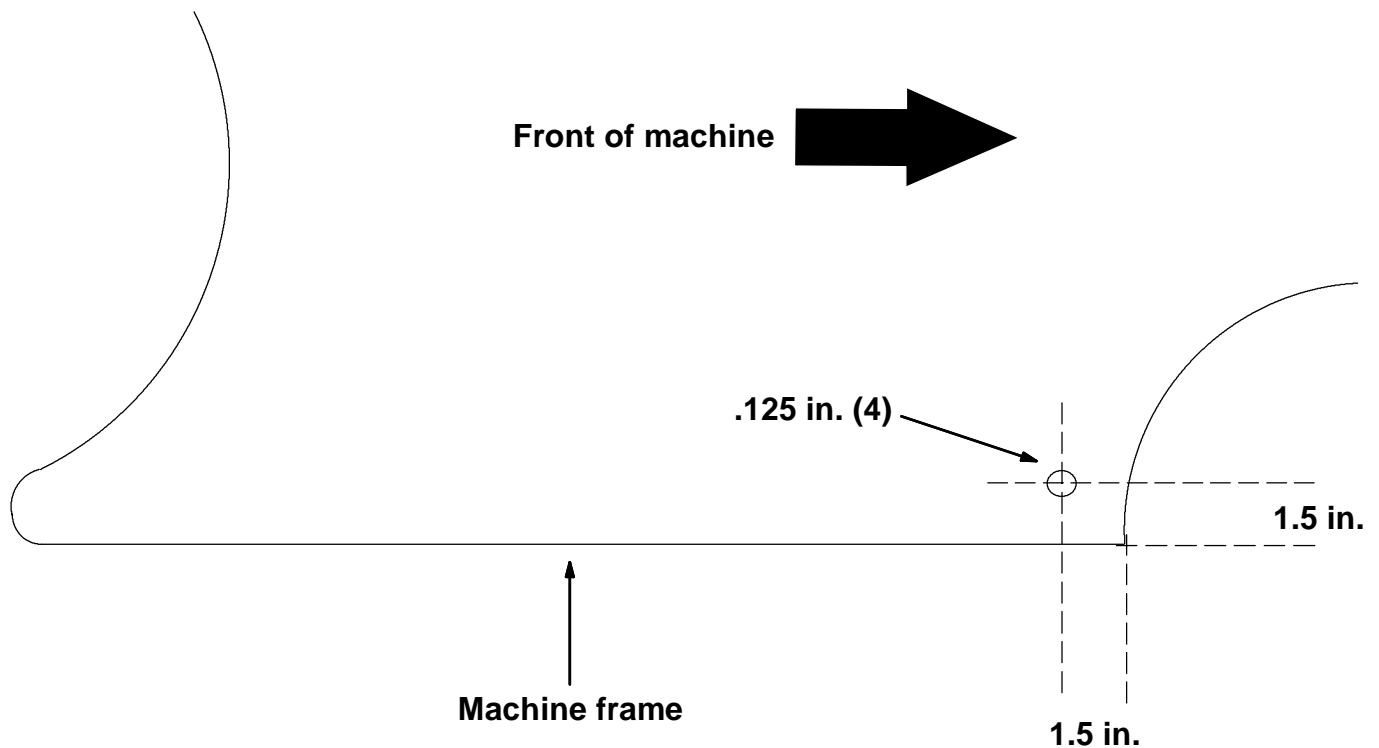


FIG. 2 - Wide Track Wheel Assembly

17. Use the dimensions in FIG. 2 to mark and drill the first 1/8 in. mount hole for the right (2) and left (3) wheel guards. Use the wheel guards as a template to mark the remaining three mount holes. Drill these to 1/8 in. also. (Refer to FIG. 2)

NOTE: Make sure the wheel guard is oriented in such a way where the front edge is lined up with the front edge of the machine frame near the area of the caster and the rear edge clears the rear wheel assembly. (Refer to FIG. 2)

18. Use the lag screws (4) and washers (5) to mount the wheel guards. **DO NOT** over-tighten the lag screws (4) when screwing them into the plastic frame. (Refer to FIG. 2 and 4)
19. Install the fire shield from the old hopper into the new hopper. Install the new hopper assembly in the machine.

20. Remove existing back stop bracket with the four M8 upper bolts and one M6 lower lock nut and flat washer. Retain hardware to install the new back stop bracket. (Refer to FIG. 3)
21. Remove the static chain from the old back stop bracket and install on the new back stop. (Refer to FIG. 3)
22. Install the new back stop bracket and static chain assembly on the machine using the existing hardware. (Refer to FIG. 3)
23. Start the machine and check for proper operation.

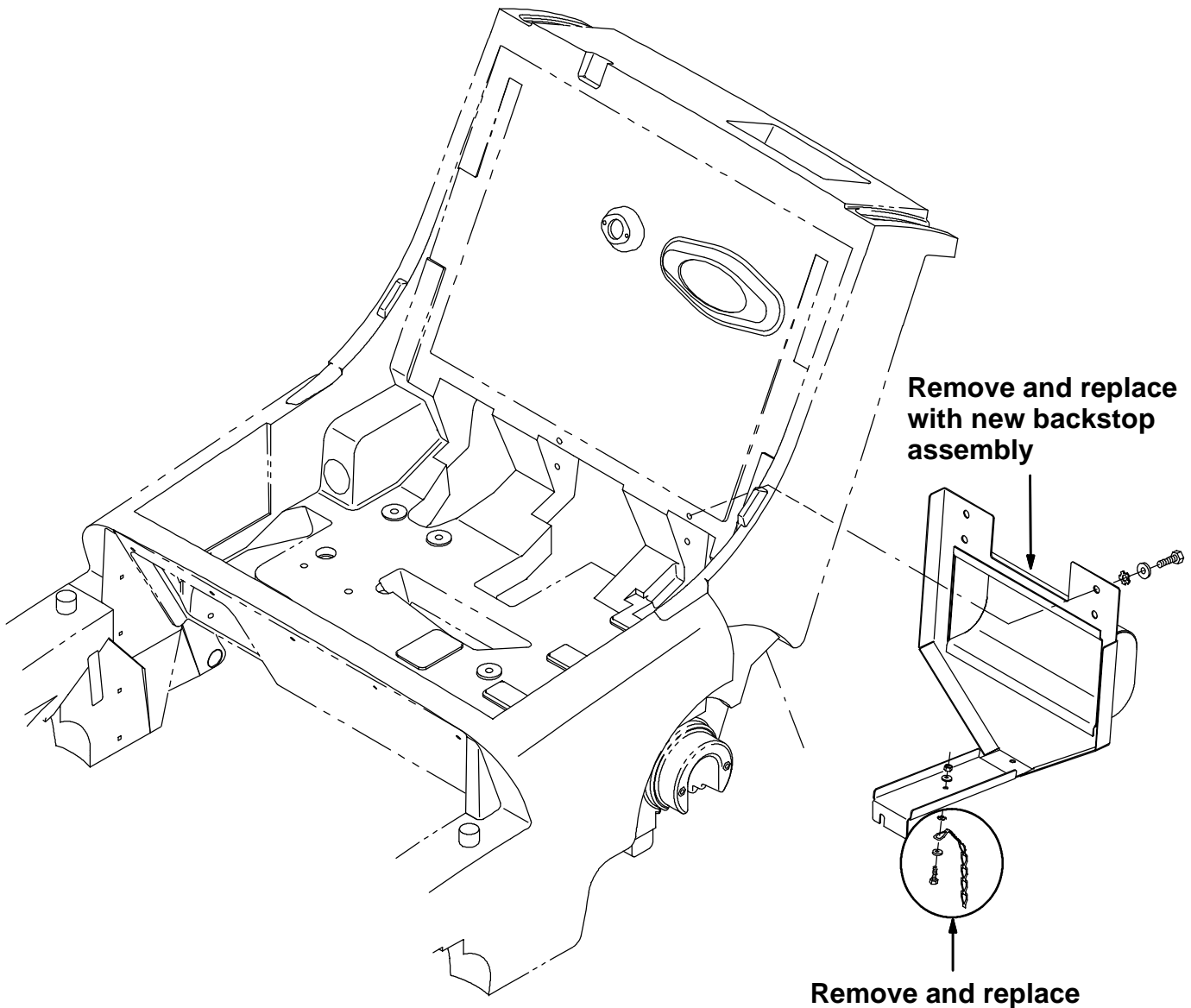


FIG. 3 - BACK STOP ASSEMBLY

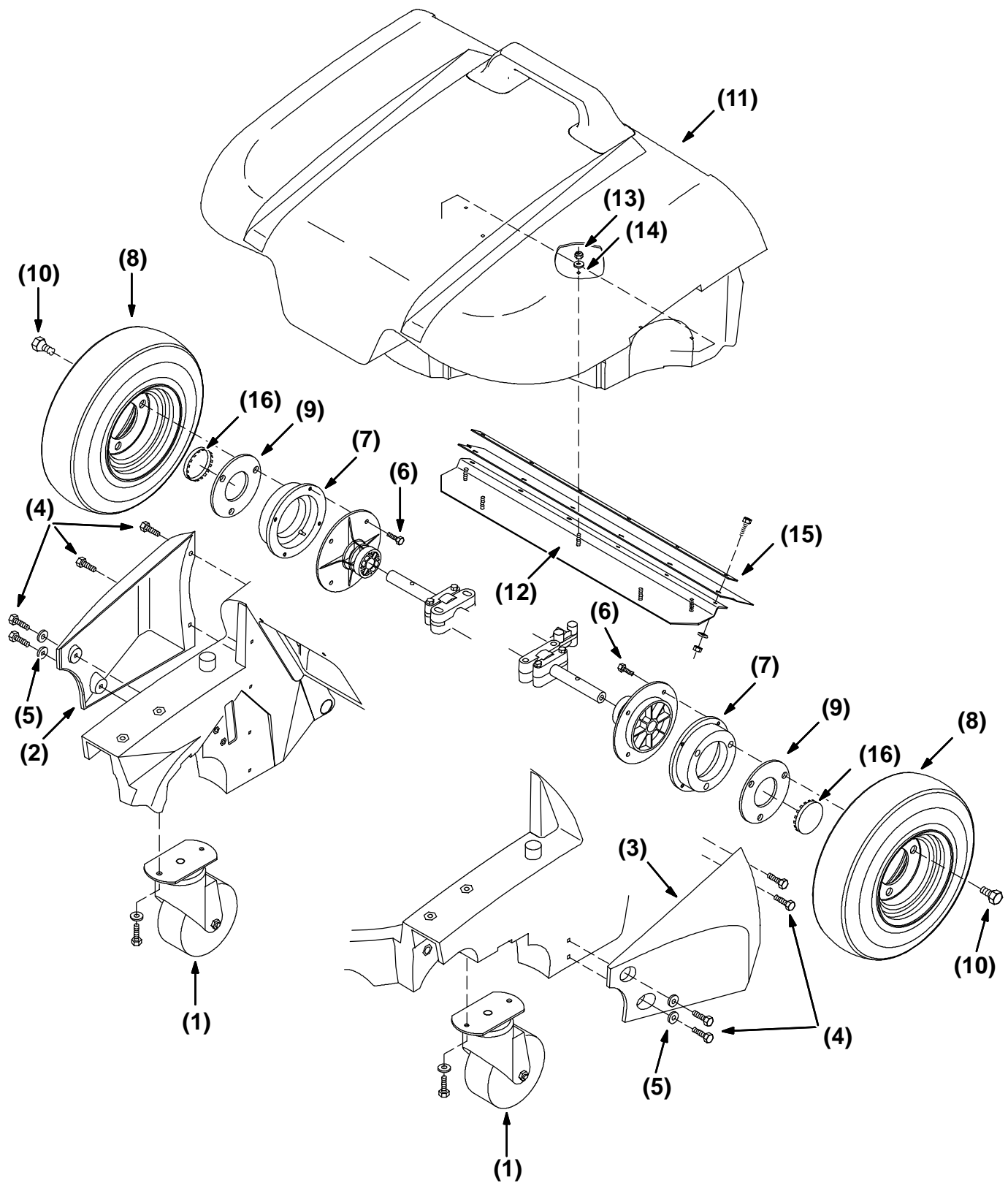


FIG. 4 - Wide Track Wheel Assembly

BILL OF MATERIALS FOR WIDE TRACK WHEEL KIT 80252

Ref.	TENNANT Part No.	Description	Qty.
1	379232	5 in. caster wheel	2
2	80216	Right wheel guard	1
3	80217	Left wheel guard	1
4	39394	Lag screw	8
5	39349	5/16 in. flat washer	8
6	87308	M6 hex screw	8
7	80211	Wheel adaptor	2
8	78572	Tire and rim assembly	2
9	80306	Plate	2
10	80276	Lug bolt	6
11	80294	Wide track hopper	1
12	80220	Wear plate	1
13	08712	Nut	5
14	01682	Washer	5
15	80230	Lip retainer	1
16	47178-6	Plug button	2
17	32676	Thread adhesive, Loctite blue 242	1
18	379229	Plate wldt, Back Stop	1

TENNANT COMPANY
P. O. Box 1452
Minneapolis, MN 55440-1452