



INSTRUCTION BULLETIN

No. 340065
Machine: 6080/3640
Published: 9-99/02
System: SWEEPING

NOTE: DO NOT DISCARD the Parts List from the Instruction Bulletin. Place the Parts List in the appropriate place in your machine manual for future reference. Retaining the Parts List will make it easier to reorder individual parts and will save you the cost of ordering an entire kit.

NOTE: Numbers in parenthesis () are reference numbers for parts listed in Bill of Materials.

Installation Instructions for Kit number 80301

SYNOPSIS / PROBLEM:

This kit contains the parts needed to convert from a panel filter to bag filter on the model 6080 and 3640 sweepers.

Please follow step-by-step instructions.

SPECIAL TOOLS / CONSIDERATIONS: None

(Estimated time to complete: 1 hour)

INSTALLATION:

(Refer to FIG. 1 and 2)

FOR SAFETY: Before leaving or servicing machine, stop on level surface and set parking brake. Then turn off machine and remove key.

1. Un-snap the two rear filter cover latches. Open the cover.
2. Remove all of the panel filter related parts (shaker motor, shaker bar, shaker brackets, panel filter, retainer brackets, hose cuff tube, and misc. parts).
3. Use the two hole plugs (6) to fill the two hole left open when the shaker bar attachment hardware was removed.
4. Turn the hose cuff a 1/4 turn and pull it out of the machine frame. Remove the sleeve from the end of the flex cuff.
5. Install the tube elbow (2) into the end of the flex cuff about 1/2 inch. Reinstall the cuff and elbow in the machine frame and turn a 1/4 turn to lock. Then push the elbow into the cuff so total engagement is about 1-1/2 inch.
6. Remove the two screws from the bottom holes of the hood hinges. Save the nyloc nuts.
7. Install the two pan screws (4) through the empty hood hinge holes.
8. Install the vacuum bag screen (1) over the two new screws (4). Install the two washers (5) and the two nyloc nuts saved in step 6. Hand tighten the hardware.
9. Install the hole in the new filter bag (3) over the tube elbow (2).
10. Close the filter cover and re-latch the locks.
11. Operate the machine and check for proper operation of the filter bag.

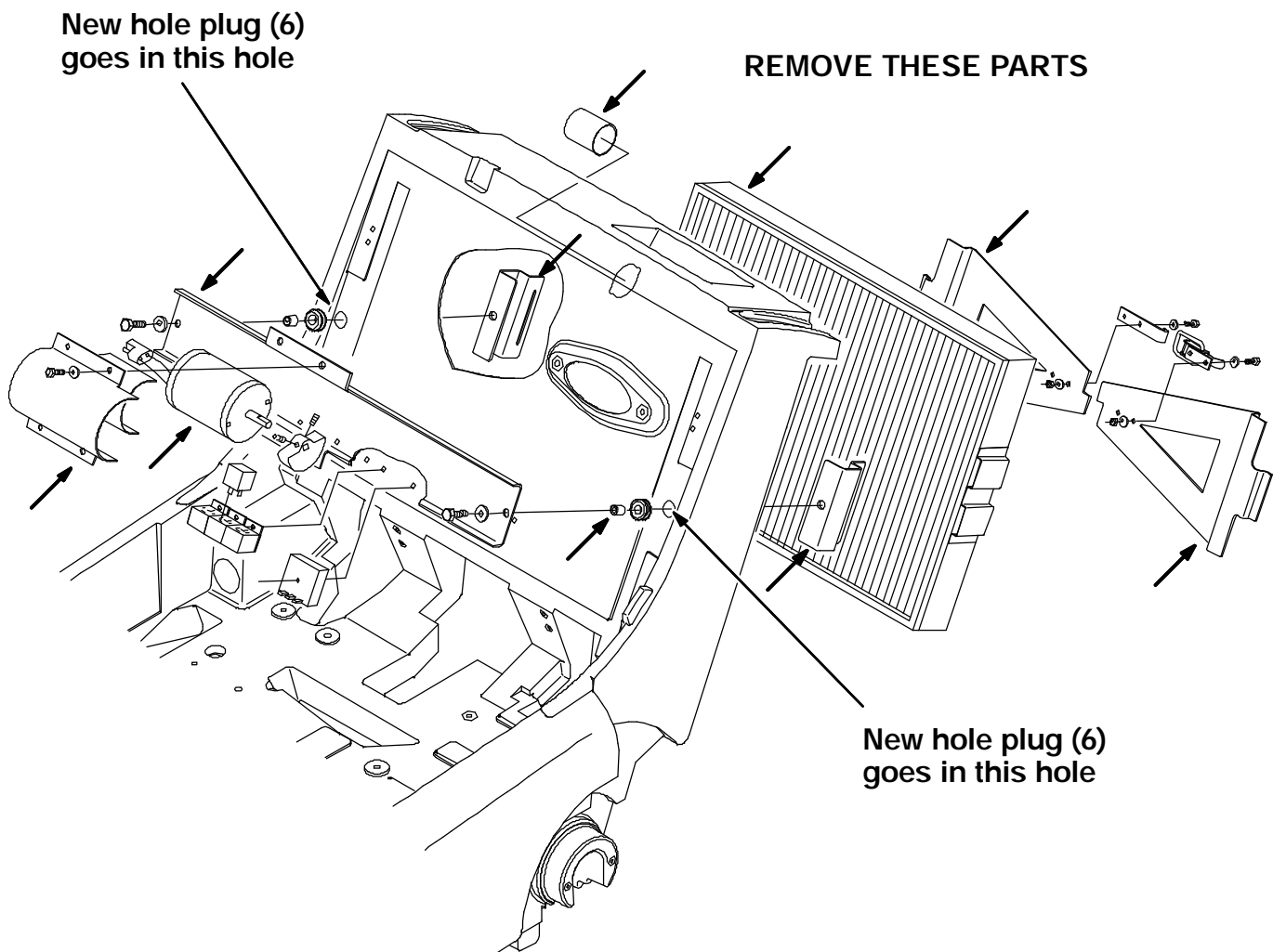


FIG. 1 - Panel Filter Assembly (parts to remove)

BILL OF MATERIALS FOR FILTER BAG REPLACEMENT KIT 80301

Ref.	TENNANT Part No.	Description	Qty.
1	80103	Vacuum bag screen	1
2	80433	Vacuum bag tube elbow	1
3	80432	Vacuum bag, disposable	1
4	09258	Pan screw, M6	2
5	41178	Flat washer, .25 in.	2
6	80062	Hole plug, .81 in.	2

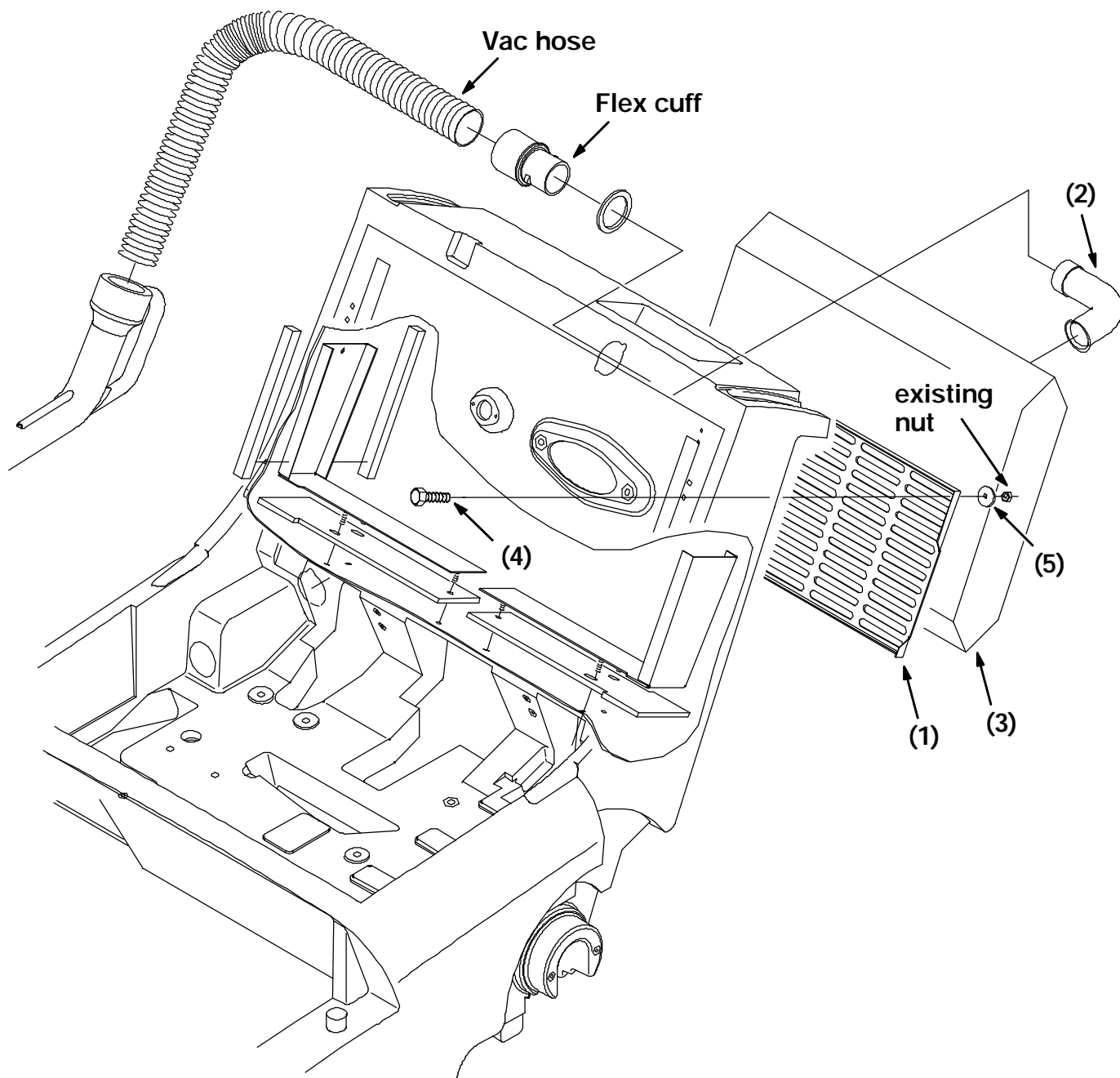


FIG. 2 - Filter Bag Assembly

TENNANT COMPANY
P. O. Box 1452
Minneapolis, MN 55440-1452