



INSTRUCTION BULLETIN

No. 340005

Machines: 6080G/6080E
3640G/3640E

Published: 9-99/02
System: CHASSIS

NOTE: DO NOT DISCARD the Parts List from the Instruction Bulletin. Place the Parts List in the appropriate place in your machine manual for future reference. Retaining the Parts List will make it easier to reorder individual parts and will save you the cost of ordering an entire kit.

NOTE: Numbers in parenthesis () are reference numbers for parts listed in Bill of Materials.

Installation Instructions for Kit numbers 80472 and 80476

SYNOPSIS / PROBLEM:

This kit contains the parts needed to install a transaxle repair kit on the model 6080 and 3640 sweepers. Please follow step-by-step instructions.

SPECIAL TOOLS / CONSIDERATIONS:

(Estimated time to complete: 2 hours)

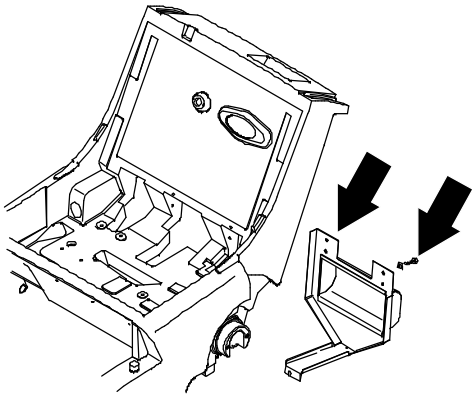
TO REMOVE TRANSAXLE:

(Refer to FIG. 1)

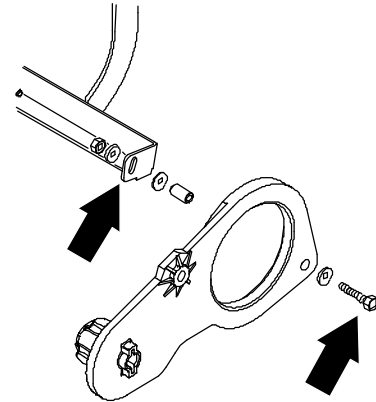
FOR SAFETY: Before leaving or servicing machine, stop on level surface and set parking brake. Then turn off machine and remove key.

1. Lift the rear of the machine until the drive wheels are off the floor.
2. Place blocks under the machine frame.
3. Remove the cover from the drive belt. (Refer to FIG. 1)
4. Slip the main drive belt off the sheave on the transaxle.
5. Remove the flat head screw holding each hub cap to the drive wheels. (Refer to FIG. 1)
6. Pull the hub cap and drive wheel off each side of the machine. (Refer to FIG. 1)
7. Remove the hex screw, sheave, and nut holding the left side of the brush shaft to the left side of the brush arm. (Refer to FIG. 1)
8. Remove the two hex screws holding the shift cable mount clamp to the machine frame. (Refer to FIG. 1)
9. Pop the shift cable off the ball end on the shift link. (Refer to FIG. 1)
10. Spread the left handle leg out far enough to drop it down past the end of the left axle shaft. (Refer to FIG. 1)

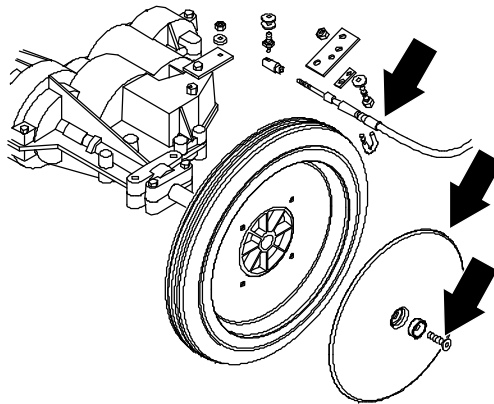
11. Remove the two hex screws holding the brush arm retaining plate to the left side of the machine frame. Remove the retaining plate. (Refer to FIG. 1)
12. Remove the left brush arm from the machine frame. (Refer to FIG. 1)



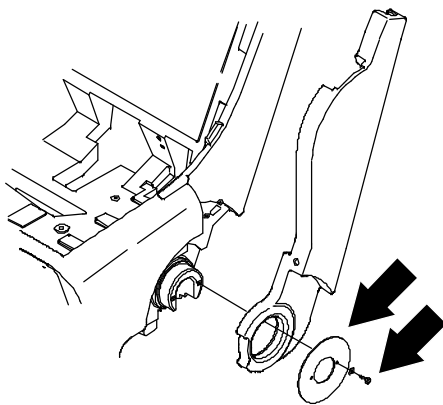
1. REMOVE FLAT BELT COVER.



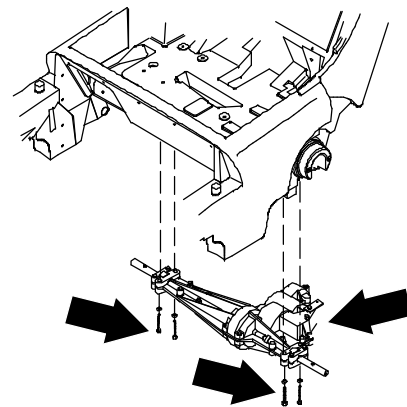
2. REMOVE BRUSH ARM BELT.



3. REMOVE HUB CAPS AND WHEELS.



4. REMOVE BRUSH ARM RETAINING PLATE.



5. REMOVE TRANSAXLE HARDWARE.

FIG. 1 - Transaxle Removal Sequence

13. Remove the five hex screws holding the transaxle to the machine frame. (Refer to FIG. 1)
14. First drop the transaxle down out of the left side of the machine then pull it out of the right handle opening and right side brush arm. Remove the transaxle from the machine. (Refer to FIG. 1)

INSTALLATION FOR KIT 80476:

(Refer to FIG. 1 and 2)

1. Remove the plug from the top of the transaxle. (Refer to FIG. 2)
2. Install the relief fitting (2) in the empty hole on top of the transaxle. Tighten firmly.
(Refer to FIG. 2)
3. Reinstall the transaxle in the machine. (Refer to FIG.1)

TO INSTALL WHEELS:

1. Put the transaxle in neutral.
2. Turn the axle shaft so the shear pin can be installed into the cross hole. Rotate the axle until the shear pin is horizontal--this will keep the pin from falling out.
3. Put the transaxle in park and install the wheel and hub assembly. Repeat this procedure on both sides.

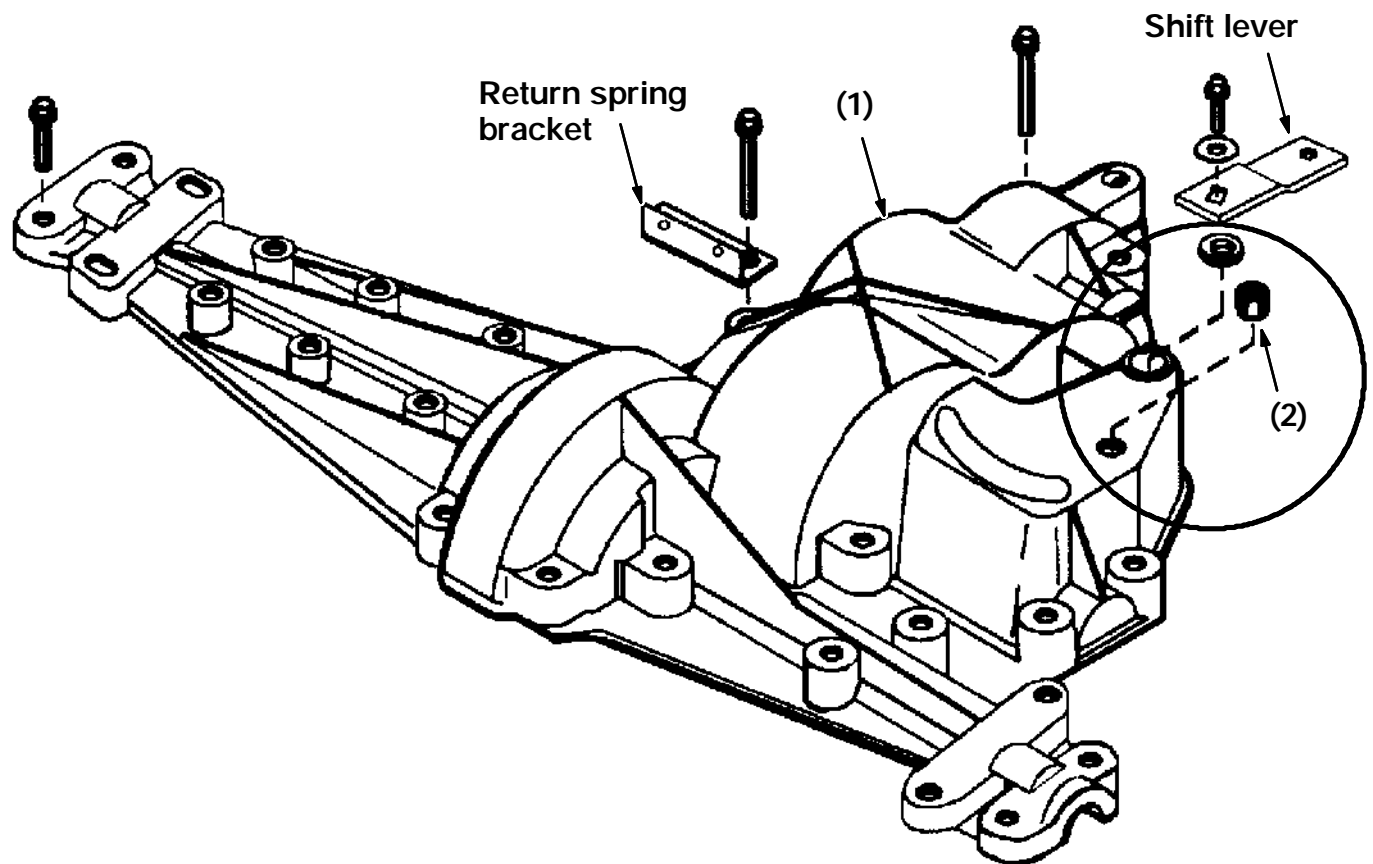


FIG. 2 - Transaxle Relief Fitting Installation

BILL OF MATERIALS FOR TRANSAXLE ASSEMBLY KIT 80476

Ref.	TENNANT Part No.	Description	Qty.
1	80022	Transaxle, 3 speed	1
2	80471	Relief fitting, 1/8 - ptf	1

INSTALLATION FOR KIT 80472:

(Refer to FIG. 3)

1. Disassemble the transaxle using the transaxle breakdown illustration. (Refer to FIG. 3)
2. Install the new input shaft seal (4), two new axle seals (3), and two new shifter keys (2).

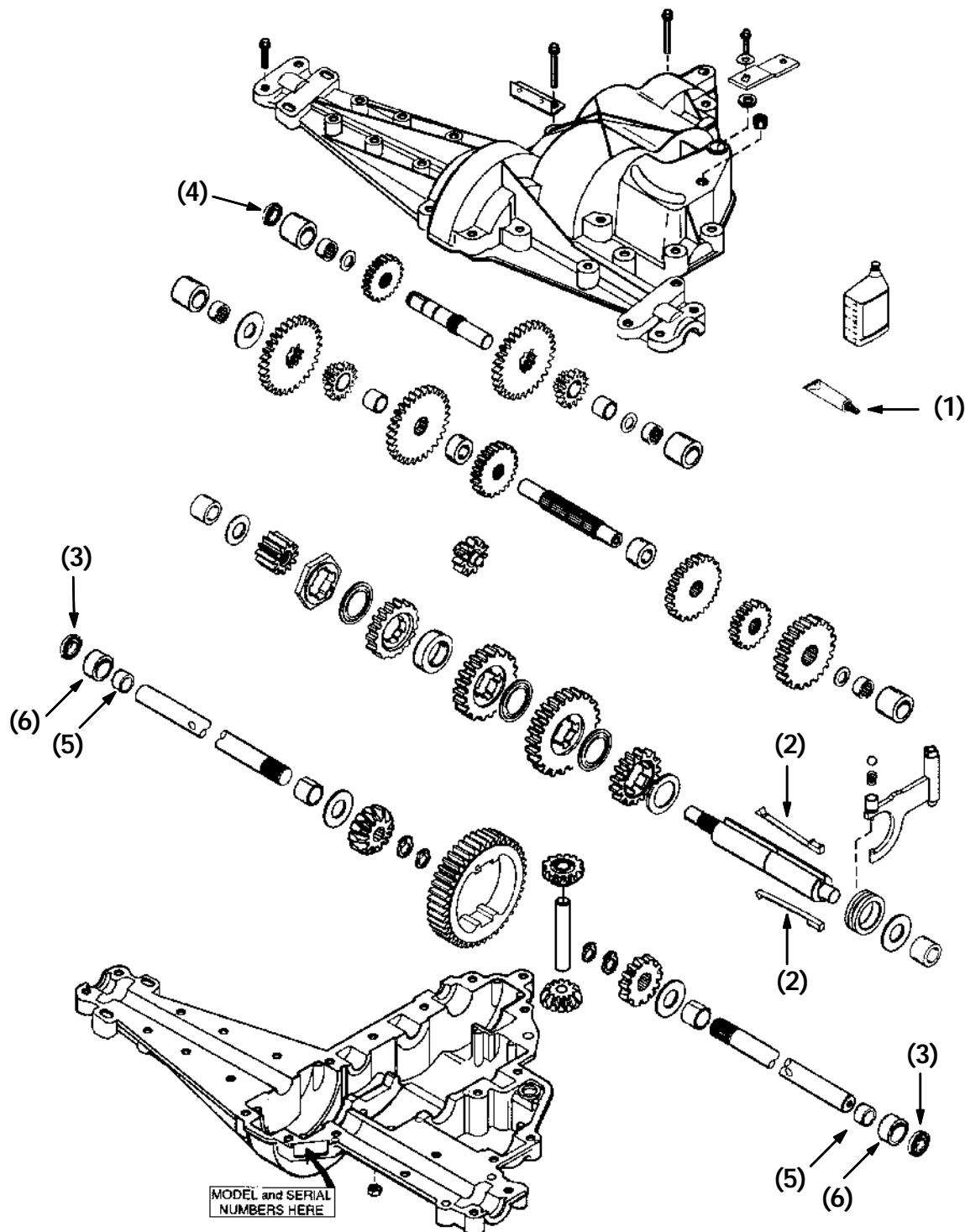


FIG. 3 - Transaxle Breakdown

3. Reassemble the transaxle using the transaxle breakdown illustration. (Refer to FIG. 3)

NOTE: Use the RTV sealant (1) on the mating surfaces of the transaxle halves.

BILL OF MATERIALS FOR TRANSAXLE REPAIR KIT 80472

Ref.	TENNANT Part No.	Description	Qty.
1	08317	RTV sealant, 3oz.	1
2	80473	Shifter key	2
3	80474	Axle seal	2
4	80475	Input shaft seal	1
5	80352	Axle bearing	2
6	80353	Bearing sleeve	2

TENNANT COMPANY
P. O. Box 1452
Minneapolis, MN 55440-1452