



# 6100 Floor Sweeper USE and CARE Guide

**FOR SAFETY: READ OPERATOR'S MANUAL BEFORE OPERATING MACHINE.**

**⚠ WARNING:** Failure to follow these warnings may result in personal injury, electrocution, electrical shock, fire or explosion: Do not operate machine in or near flammable liquids, vapors or combustible dusts. Do not pick up flammable or toxic material, burning or smoking debris. Keep sparks and open flame away and battery hood open when charging. Disconnect battery cables before servicing machine.

## DAILY: BEFORE EACH USE

**1. Check the battery meter charge level and charge if needed (See Battery Charging Information below).**



**2. Check all switches, buttons, levers, pedals and steering to make sure they operate properly then turn key off.**



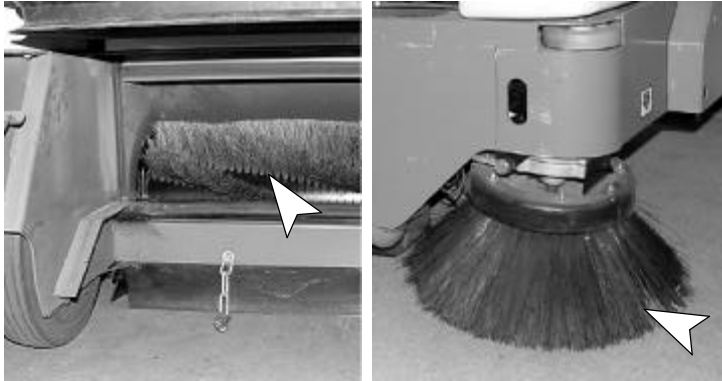
**3. Make sure the debris hopper is empty.**



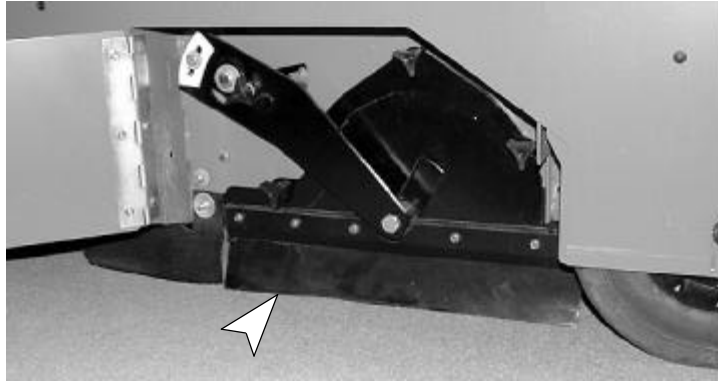
**4. Make sure the hopper dust filter is properly installed and clean.**



**5. Check the main brush and side brush for wear and proper adjustment.**



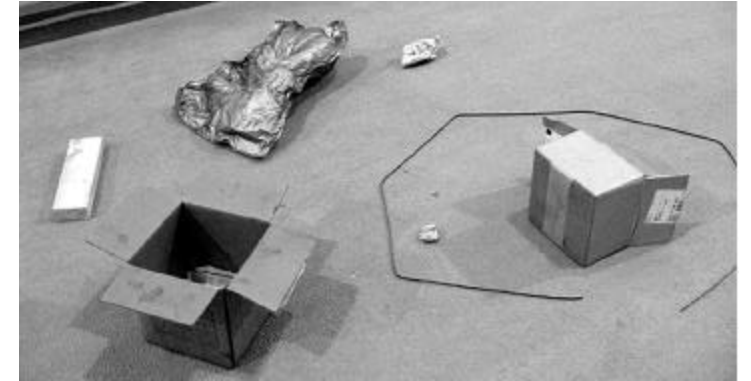
**6. Check the brush skirts for damage, wear and adjustment. Replace if worn or damaged.**



**7. Vacuum Wand Option: Check or change vacuum bag. Check vacuum hose for obstructions.**



**8. Pick up oversize debris, wire, twine and string before sweeping.**



## DAILY: AFTER EACH USE

**1. Operate the Brush/Vacuum Fan/Filter Shaker switch for 10 seconds.**



**2. Turn key off, set parking brake and empty the debris hopper.**



**3. Raise brushes off floor to prevent damage. Remove any entangled debris from brushes.**



**4. Clean the machine with an all purpose cleaner and damp cloth.**



**5. Broom Option: Rotate or wash the broom heads as needed.**



**6. Check battery fluid level (See Battery Charging Information).**



**7. Recharge batteries ONLY if machine has been used for a total of 30 minutes or more.**



### **BATTERY CHARGING INFORMATION:**

Before charging, check battery fluid level in each battery cell. The fluid level should be 1/4" above the battery plates. Add distilled water if needed. **DO NOT OVERFILL.**

When disconnecting the battery charger always remember to unplug the charger from the wall outlet first.

## MONTHLY: *Refer to the Operator's Manual for further details.*

**1. Remove and clean the dust hopper filter. Replace filter if torn or clogged.**



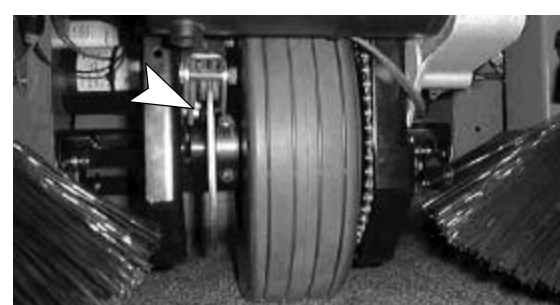
**2. Check brush pattern. Rotate brush end-for-end or replace when bristles measure 1" in length or less.**



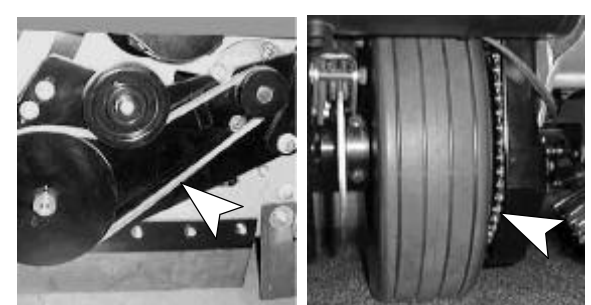
**3. Clean battery tops and terminals. Keep battery tops clean and dry.**



**4. Check brake adjustment and tire wear.**



**5. Check condition and tension of belts and chains. Lubricate the chains with SAE 30 Engine oil.**



**ATTENTION: FOR MACHINE REPAIRS, CONTACT AN AUTHORIZED SERVICE CENTER.**