

# Technical Service Bulletin

**MODEL(S) T300/T300e Models**

**AFFECTED:** Models manufactured in N. America before serial number 10778394 (December 23, 2015)  
Models manufactured in Europe before serial number U11213 (November 26, 2015)

**SUBJECT:** Scrub head lift pedal difficult to disengage from raised position.

**PURPOSE:** To improve scrub head lift pedal function, order Pedal Latch Upgrade Kit p/n 9014788.

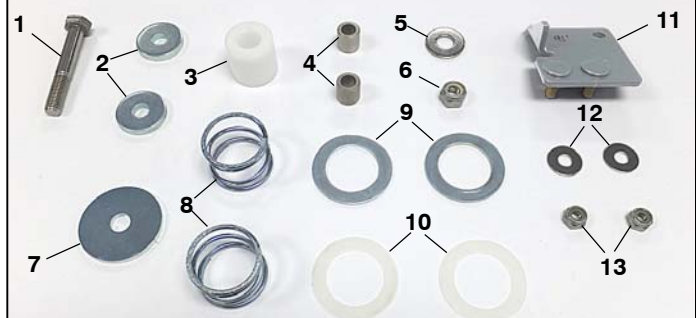
**NOTES:** **Warranty Information:** Standard warranty terms apply.

Scrub head lift pedal function.



The Pedal Latch Upgrade Kit includes the necessary parts to rework all model types (Disk, Orbital and Cylindrical).

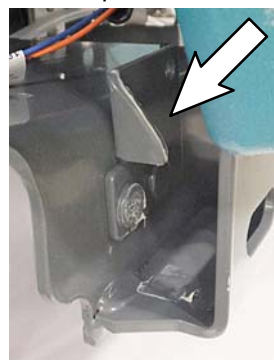
## 9014788 Pedal Latch Upgrade Kit Contents



Old style pedal latch



New kit pedal latch



New kit slide roller assembly  
(Disk/Orbital models)



New kit slide roller assembly  
(Cylindrical models)



Ref	Part No.	Description	Qty.
1	222504	Screw, Hex, Lock, M6 x 1.00, NL, SS	1
2	1028796	Washer, Flat, 0.33B 1.00D .18, STL, PL	2
3	1014020	Roller, 0.99D 0.50B 0.95L, acetal	2
4	222460	Sleeve, p/m, 0.32B 0.50D 0.5L	2
5	01685	Washer, Flat, 0.38B 0.88d .08, SS	1
6	08713	Nut, Hex, Lock, M8 x 1.25, NL, SS	1
7	379829	Washer, Flat, 0.43B 1.50D .12, Stl, PL	1
8	1210103	Spring, Cmpr, 1.23OD 0.085wir 0.88L	2
9	20955	Washer, Flat, 1.03B 1.50D .04, Stl, PI	2
10	1210112	Washer, Flat 1.03B 1.50D .03, Nylon	2
11	1223078	Bracket Weldment, Latch	1
12	01684	Washer, Flat, 0.27B 0.69D .05 ss	2
13	08712	Nut, Hex, Lock, m6 x 1.00, NL, ss	2
	9014787	Instructions, Kit Installation	1