

## Technical Service Bulletin

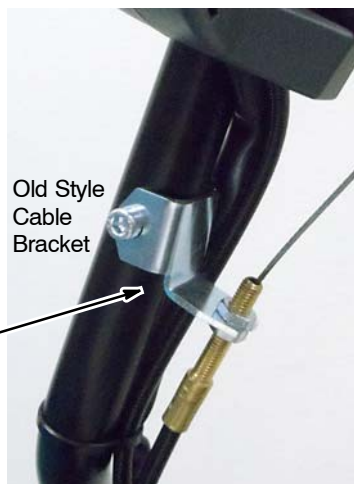
**MODEL(S) AFFECTED:** S9 Walk- Behind Sweeper  
Machines shipped before June, 2013.

**SUBJECT:** Potential loss of propel due to bail not functioning properly or bail not holding adjustment after belt tensioner bracket was properly adjusted.

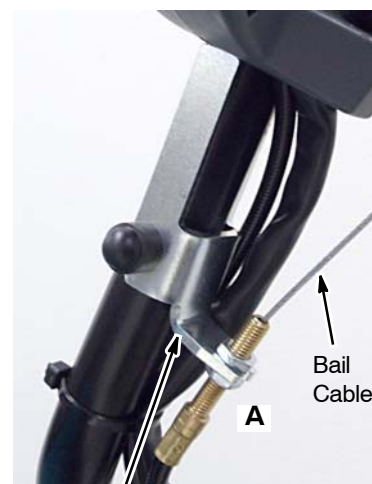
**PURPOSE:** If machine is equipped with old style cable bracket (shown below) and you experience the above condition, order the upgraded bail and cable kit p/n 9010175. The kit includes the necessary parts to resolve the propel issue as described below.

**NOTES:** **Warranty Information:** Standard warranty terms apply.

### Old Style Cable Bracket

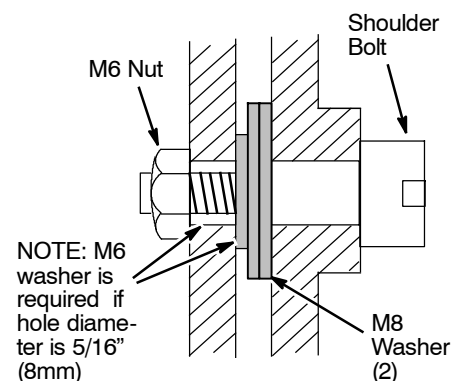
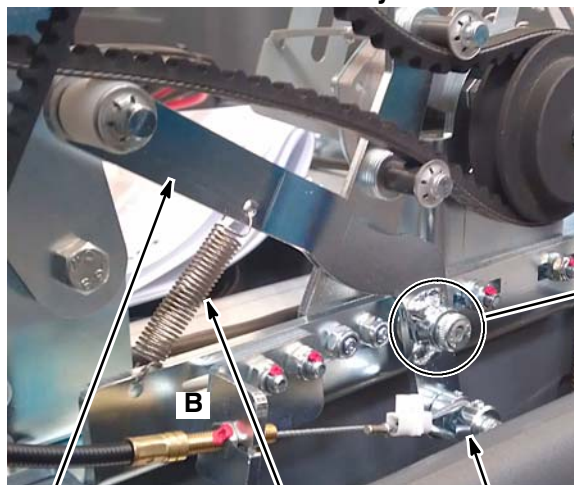


### Upgraded Cable Bracket



Install new cable bracket.

### Belt Tension Bracket Assembly



Install new belt-tensioning arm with bend.

Install spring, use existing bracket holes.

Install cable thimble.

Install new shoulder bolt, washers and nut as shown.

**NOTE:** This kit includes other service parts that are not required for this specific repair, such as the bail and cable.

After installing the new kit parts, adjust the bail cable at points A and B for proper bail operation. For proper adjustment, the machine should begin to propel forward when bail is slightly squeezed.