

Technical Service Bulletin

**MODEL(S)
AFFECTED:****Speed Scrub Rider**

Model serial numbers before: 10280389 (April 20, 2006)

SUBJECT:

Potential squeegee lift actuator and/or spring housing failure due to a clearance issue.

PURPOSE:

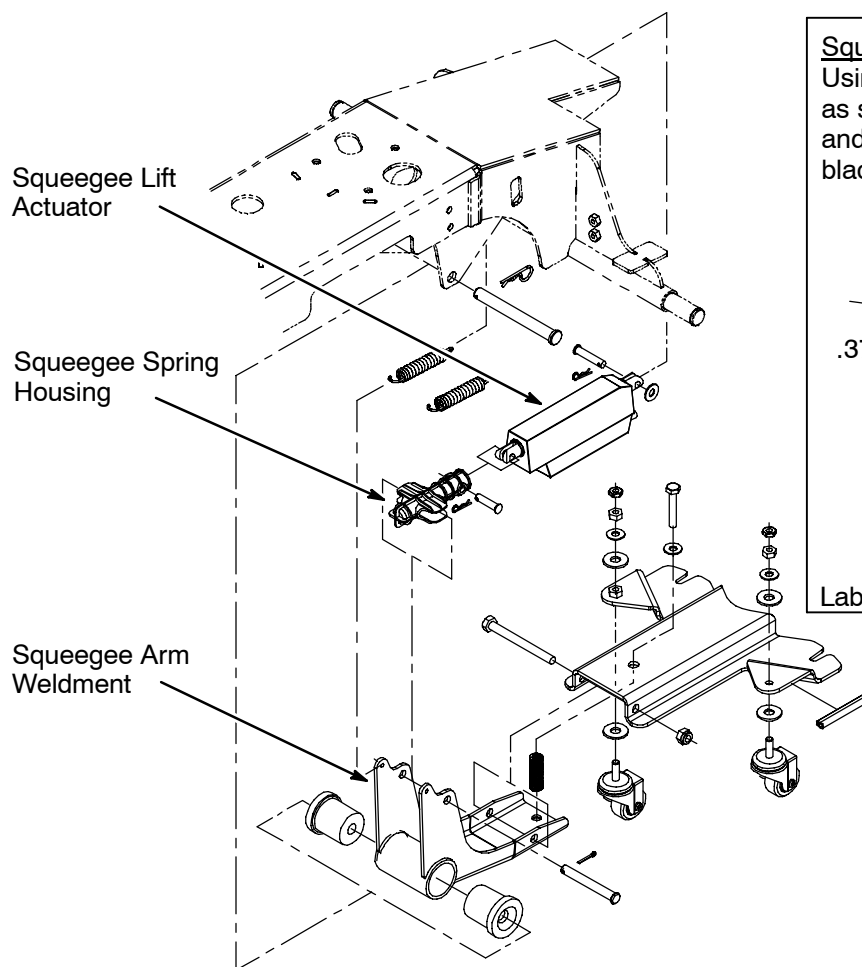
To prevent potential actuator and spring housing failure, the squeegee arm weldment must be modified as described below. The suggested modification will provide proper clearance for actuator movement, eliminating the risk for failure.

NOTES:

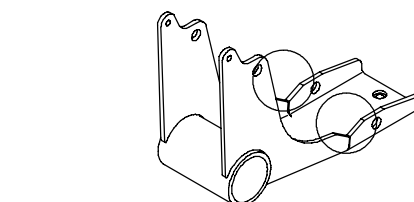
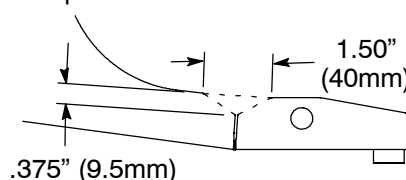
The following replacement parts were developed for field repair:

- 9002550 Spring Housing Kit - This kit includes a redesigned, more robust spring housing and instructions on how to modify the existing squeegee arm weldment. The old spring housing p/n 1012607 has been discontinued and replaced by this kit.
- 9002551 Actuator Kit - This kit includes a new actuator and the above Spring Housing Kit.
- 1031379 Arm, Weldment, Squeegee, Rear (Redesigned to add clearance for actuator movement) This Arm Weldment can be used instead of making the modification to the existing part.

For questions, contact the Tennant Customer Service Department at (800) 553-8033 or (763) 513-2850.



Squeegee Arm Weldment Modification:
Using a die-grinder, remove the material as shown. Blow out the metal shavings and touch up the exposed metal with black paint.



Labor Time: 1/2 hr