

Technical Service Bulletin

MODEL(S) T300/T300e Walk-Behind Scrubbers
AFFECTED:

N. America Models manufactured between S/N T300-10887923-10895138, T300E-10885193-10894870
 EMEA Models manufactured between S/N T300E-U18824-U19437 (T300 models not affected)
 APAC Models manufactured between S/N T300ES/T300-30077783-30078911

SUBJECT: Reduced battery run-time and/or BDI fails to display a full charge after a complete charge cycle.

Root Cause: A diode was recently added to the wire harness to prevent potential control board failure if battery terminal connection is accidentally reversed. Reports claim the addition of the diode has caused a small voltage drop affecting the firmware to act as if the batteries are at a lower voltage.

PURPOSE: To repair the above issue, the diode must be removed and replaced with Jumper Kit 9017921 as shown below. As an alternative option to repair issue, the diode connector plug can be cut from the wire harness and replaced with a spade terminal also shown below.

NOTES: **Warranty Information:** Standard warranty terms apply.

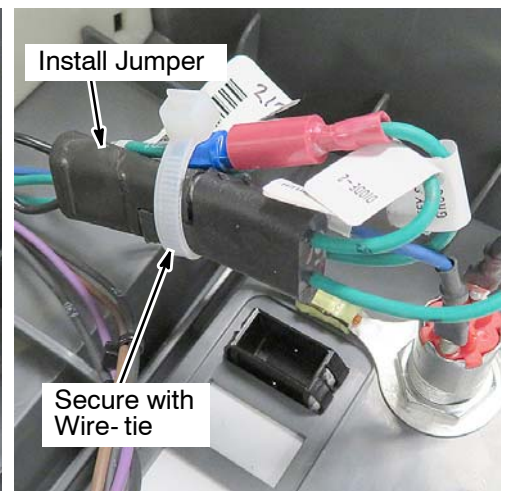
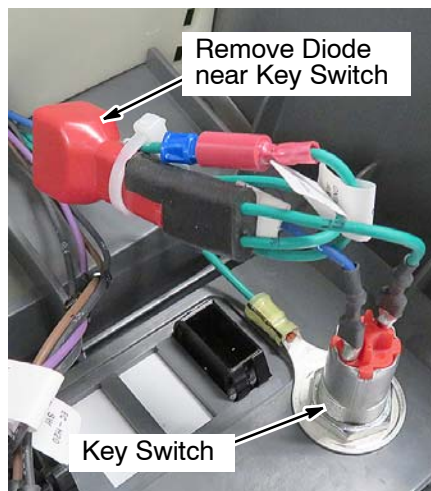
Install Jumper Kit to repair issue:

9017921 Jumper Kit Contents



Part No.	Description	Qty.
1240969*	Jumper	1
130040	Cable, Tie, Nyl, 06.0L .12W	1
9017939	Installation Instructions	

* The kit contents will include either a wire harness jumper or a plug connector jumper as shown above. Both serve the same purpose.



Alternative option to repair issue:

FOR SAFETY: Disconnect batteries from machine before working on electrical components.

Cut the diode plug from the wire harness and install the specified insulated female terminal part number as shown.

