

# Technical Service Bulletin

**MODEL(S) T350 Stand-on Scrubbers equipped with Smart-Fill™ ABW system**
**AFFECTED:** N. America models manufactured before S/N T350-10945380 (March 27, 2019)

**SUBJECT:** The optional Smart-Fill™ automatic battery watering system (ABW) may inadvertently dispense additional water to the batteries and cause batteries to be over-filled. The battery compartment is designed to contain some excess fluid, however the fluid could build up and eventually drip from the machine and cause potential damage to floor or serious injury.

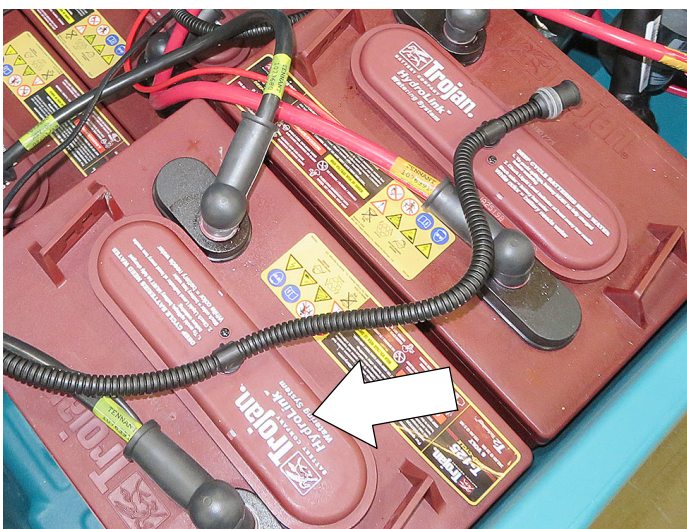
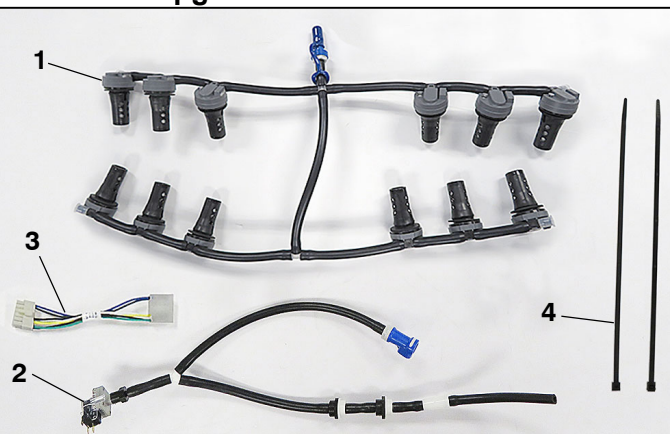
**PURPOSE:** In early March, 2019, a Product Alert notification was communicated to the NA service organization and NA distributors with instructed action steps to take until a retrofit kit is available to resolve this issue. The upgrade retrofit kit (p/n 9018990) is now available to begin reworking machines immediately.

**WARNING:** Failure to retrofit machine may result in serious injury or property damage.

**NOTES:** **Warranty Information:** Parts, labor and trip are covered at no charge.

Machines affected are equipped with the Trojan HydroLink automatic battery watering system shown below.

**NOTE:** Machines equipped with the manual (hand pump) HydroLink battery watering system are not affected.

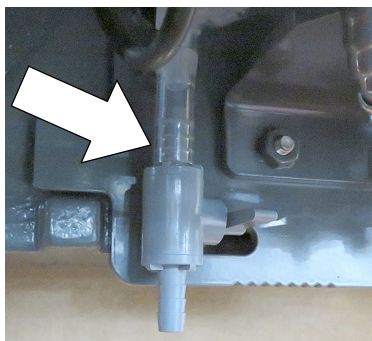

**9018990 - Upgrade ABW Retrofit Kit Contents**


Item	Part No.	Description	Qty.
1	1246651	Distribution Asm., Water, Battery	1
2	1246536	Delivery Asm., Water, Battery	1
3	1076629	Harness, Ele [Adapter, ABW]	1
4	130773	Tie, Cable, Nyl, 11.0L, 14w, 3.0	2
	9018993	Instruction Bulletin	1

Service Diagnostics Software Application required  
(Version SE 1.6.0 and LE 1.6.0 or newer)

**INSPECT THE BATTERY COMPARTMENT DRAIN HOSE ASSEMBLY FOR DAMAGE**

When servicing machine, it is also advised to inspect the battery compartment drain hose assembly for battery fluid damage. Replace assembly with kit 9019340 if damaged.


**9019340 - Battery Compartment Drain Hose Kit Contents**

	Ref Part No.	Description	Qty.
1	1233940	Valve, Ball	1
2	1014939	*Hose, clr, .38id x 2ft	1
3	1247259	Fitting, plstc, tee	1
4	1247579	Fitting, plstc, E90	1
5	1247605	Fitting, plstc, str	1
6	1247602	Fitting, plstc, str	1
7	1210807	Wire, tire	2
	9019341	Instruction Bulletin	1

Fittings are chemical resistant to withstand battery fluid.  
\* Hoses are cut to proper length.