



INSTRUCTION BULLETIN

No. 3776
Machine: 8400/8410
Published: 9-96/01
System: SCRUBBING

NOTE: DO NOT DISCARD the Parts List from the Instruction Bulletin. Place the Parts List in the appropriate place in your machine manual for future reference. Retaining the Parts List will make it easier to reorder individual parts and will save you the cost of ordering an entire kit.

NOTE: Numbers in parenthesis () are reference numbers for parts listed in Bill of Materials.

Installation Instructions for Kit number 83863.

SYNOPSIS / PROBLEM:

This kit contains the parts needed to replace the rear squeegee lift cable on the models listed above.

Please follow step-by-step instructions.

SPECIAL TOOLS / CONSIDERATIONS:

(Estimated Time to complete: .5 hour)

PREPARATION:

(Refer to FIG. 1 and 2)

1. Park the machine on a level surface. Lower the rear squeegee.

FOR SAFETY: Before leaving or servicing machine, stop on level surface and set parking brake (if equipped on machine). Then turn off machine and remove key.

2. Remove and discard the cotter pin and clevis pin holding the old lift cable to the squeegee frame. Remove the lift cable from the squeegee frame. (Refer to Fig. 1 and 2)
3. Remove and discard the hair pin and clevis pin holding the other end of the squeegee lift cable to the **upper** lift cable bracket. (Refer to Fig. 1 and 2)
4. Remove the old squeegee lift cable from the machine and discard. (Refer to Fig. 1 and 2)
5. Install one end of the new lift cable (1) to the upper lift cable bracket using one new clevis pin (2), one flat washer (3), and the hair pin (4). (Refer to Fig. 1 and 2)
6. Route the new lift cable (1) over the top of the pivot roller in the lower bellcrank. (Refer to Fig. 1 and 2)
7. Install the other end of the new lift cable (1) to the lift lug on the squeegee frame. Use one new clevis pin (2), one flat washer (3), and the cotter pin (5). (Refer to Fig. 1 and 2)
8. Start the machine and raise the squeegee. Check for proper operation.

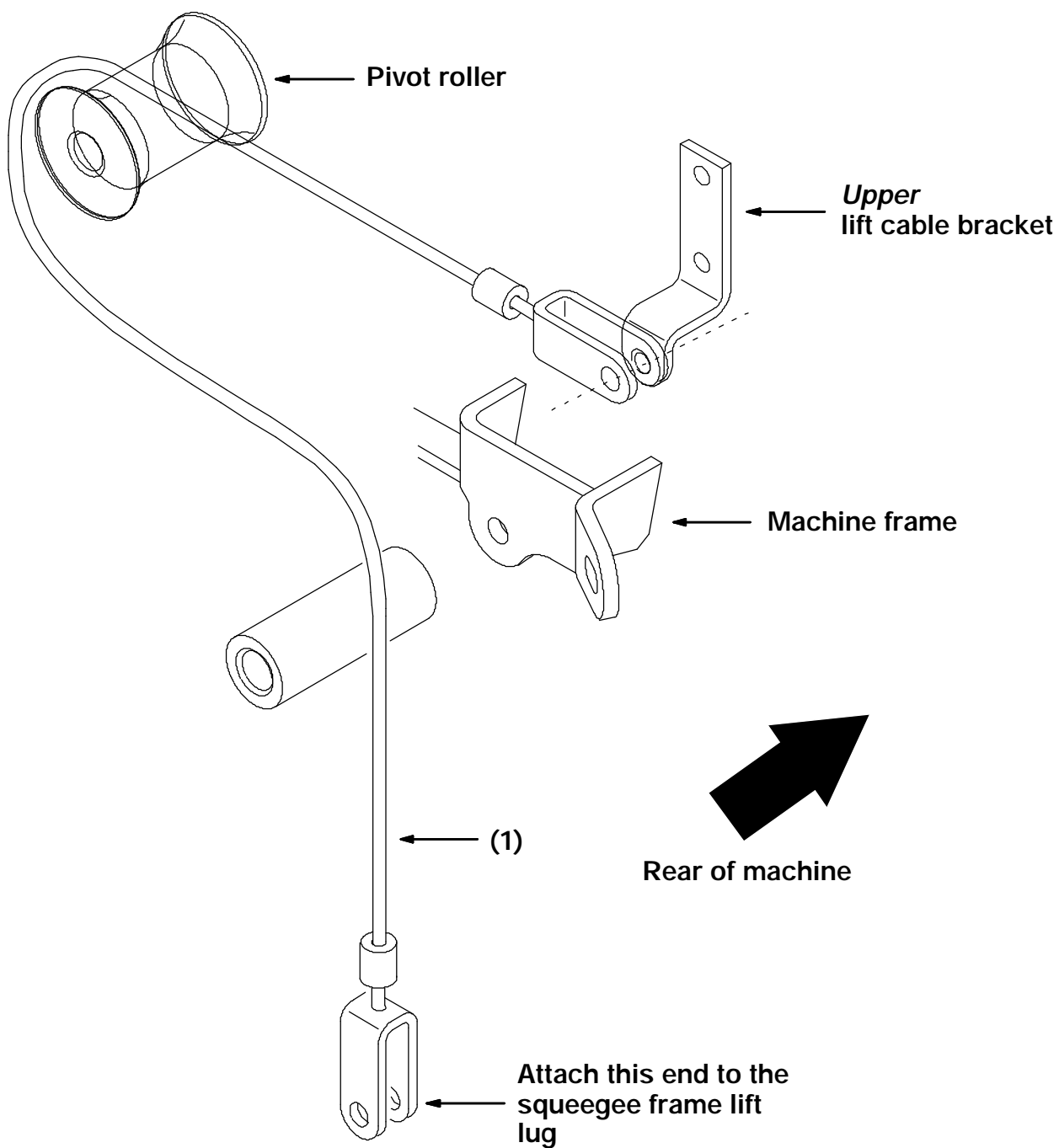


FIG. 1 – Lift Cable Assembly

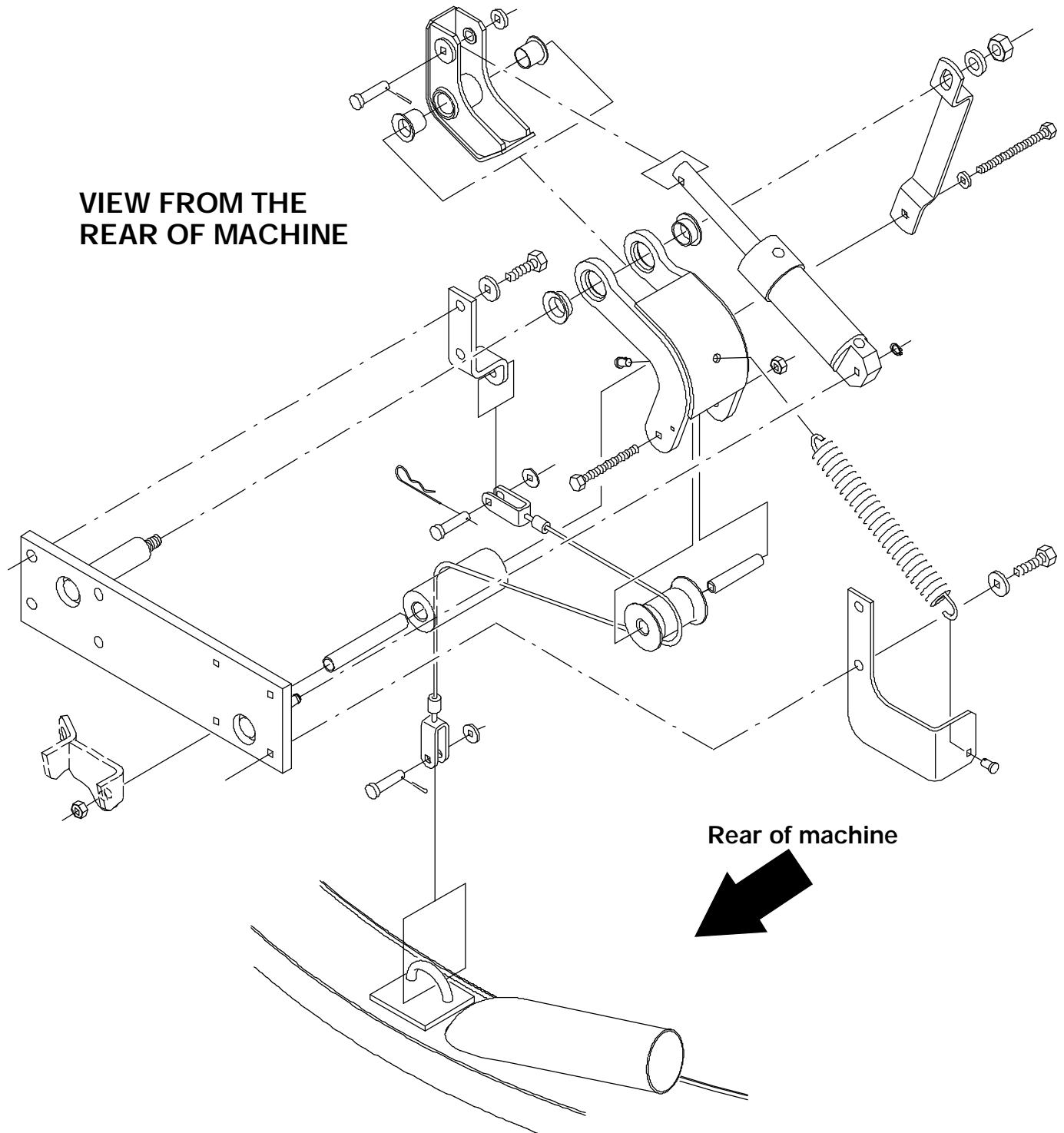


FIG. 2 – View From Rear

BILL OF MATERIALS FOR SQUEEGEE LIFT CABLE REPLACEMENT KIT 83863

Ref.	TENNANT Part No.	Description	Qty.
1	10542	Squeegee lift cable, (18.00 in. long)	1
2	86240	.375 in. x 1.13 in. pin	2
3	32491	Flat washer	2
4	86866	Hair pin	1
5	08179	Cotter pin	1

TENNANT COMPANY
P. O. Box 1452
Minneapolis, MN 55440-1452