



INSTRUCTION BULLETIN

No. 3735
Machine: 5700
Published: 3-96/02
System: SCRUBBING

NOTE: DO NOT DISCARD the Parts List from the Instruction Bulletin. Place the Parts List in the appropriate place in your machine manual for future reference. Retaining the Parts List will make it easier to reorder individual parts and will save you the cost of ordering an entire kit.

NOTE: Numbers in parenthesis () are reference numbers for parts listed in Bill of Materials.

Installation Instructions for Kit number 222827

SYNOPSIS / PROBLEM:

This kit contains the parts needed to install or replace a magnetic level sensor switch on the machine listed above. Some customers that are scrubbing heavy accumulations of oil or printing ink are experiencing problems with the optical sensor. Installing the magnetic level sensor and boot will eliminate these problems. Please follow step-by-step instructions.

SPECIAL TOOLS / CONSIDERATIONS: 1. None

(Estimated Time to complete: 1 hour)

PREPARATION:

(Refer to Fig. 1)

FOR SAFETY: Before leaving or servicing machine, stop on level surface and set parking brake. Then turn off machine and remove key.

1. Turn off the machine and remove the key.
2. Drain the solution tank. Raise the solution tank and engage the safety arm.
3. Disconnect the negative battery cable from the battery nearest the back of the machine before servicing any electrical components. (Refer to Fig. 1)

FOR SAFETY: Always disconnect battery cables from machine before working on electrical components.

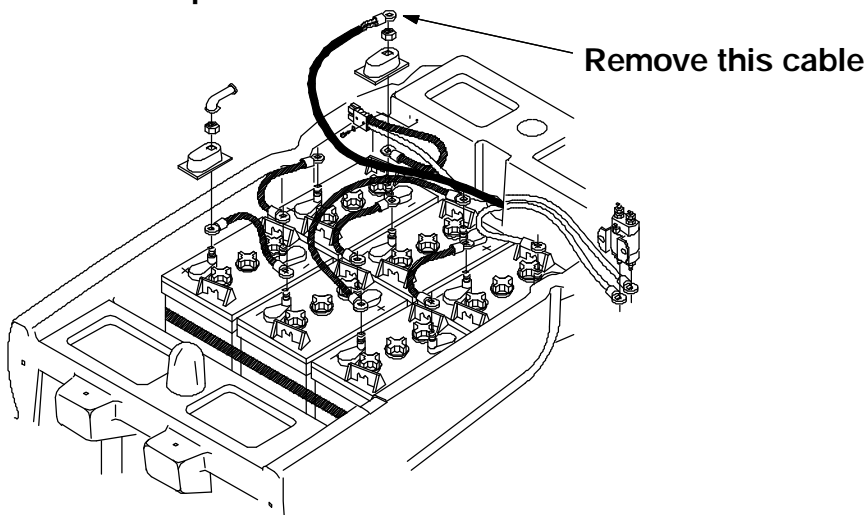


FIG. 1 - Battery Cable Disconnect

TO REMOVE OPTICAL SENSOR SWITCH

(Refer to Fig. 2)

1. Locate the optical sensor switch in the front right corner of the recovery tank.
(Refer to Fig. 2)
2. Unplug the optical sensor switch from the main electrical harness. (Refer to Fig. 2)
3. Reach inside the recovery tank and remove the plastic nut holding the optical sensor switch to the tank wall. (Refer to Fig. 2)
4. Remove the steel and rubber washer from the optical sensor switch. (Refer to Fig. 2)
5. Remove the optical sensor switch from the machine. Discard all of the removed parts.
(Refer to Fig. 2)

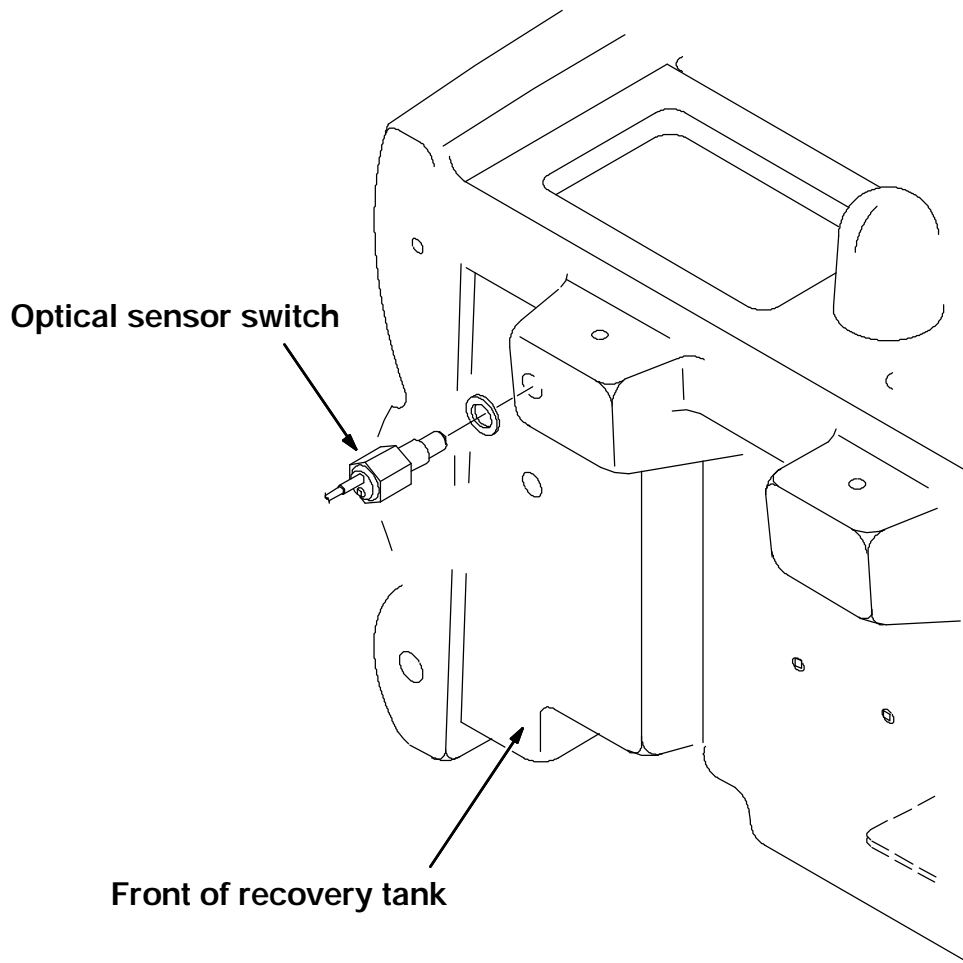


FIG. 2 - Switch Removal

TO REMOVE MAGNETIC SWITCH

1. Locate the magnetic switch in the front right corner of the recovery tank.
2. Unplug the magnetic switch from the main electrical harness.
3. Cut the connector body off the two wires on the magnetic switch.
4. Remove the plastic nut from the end of the magnetic switch that is on the outside of the tank. Slide the nut off the wires.
5. Remove the magnetic switch and rubber washer from the machine. Discard all of the removed parts.

TO INSTALL MAGNETIC SWITCH

(Refer to Fig. 2 and 3)

1. Remove the plastic nut from the new magnetic switch (1).
2. Feed the wires on the new magnetic switch (1) through the switch mount hole in the tank. Do this from the inside of the tank to the outside.

NOTE: Make sure the rubber washer that came with the kit is against the inside of the recovery tank wall.

3. Install the plastic nut over the two wires on the magnetic switch and down on the threads. Leave the nut loose for now.

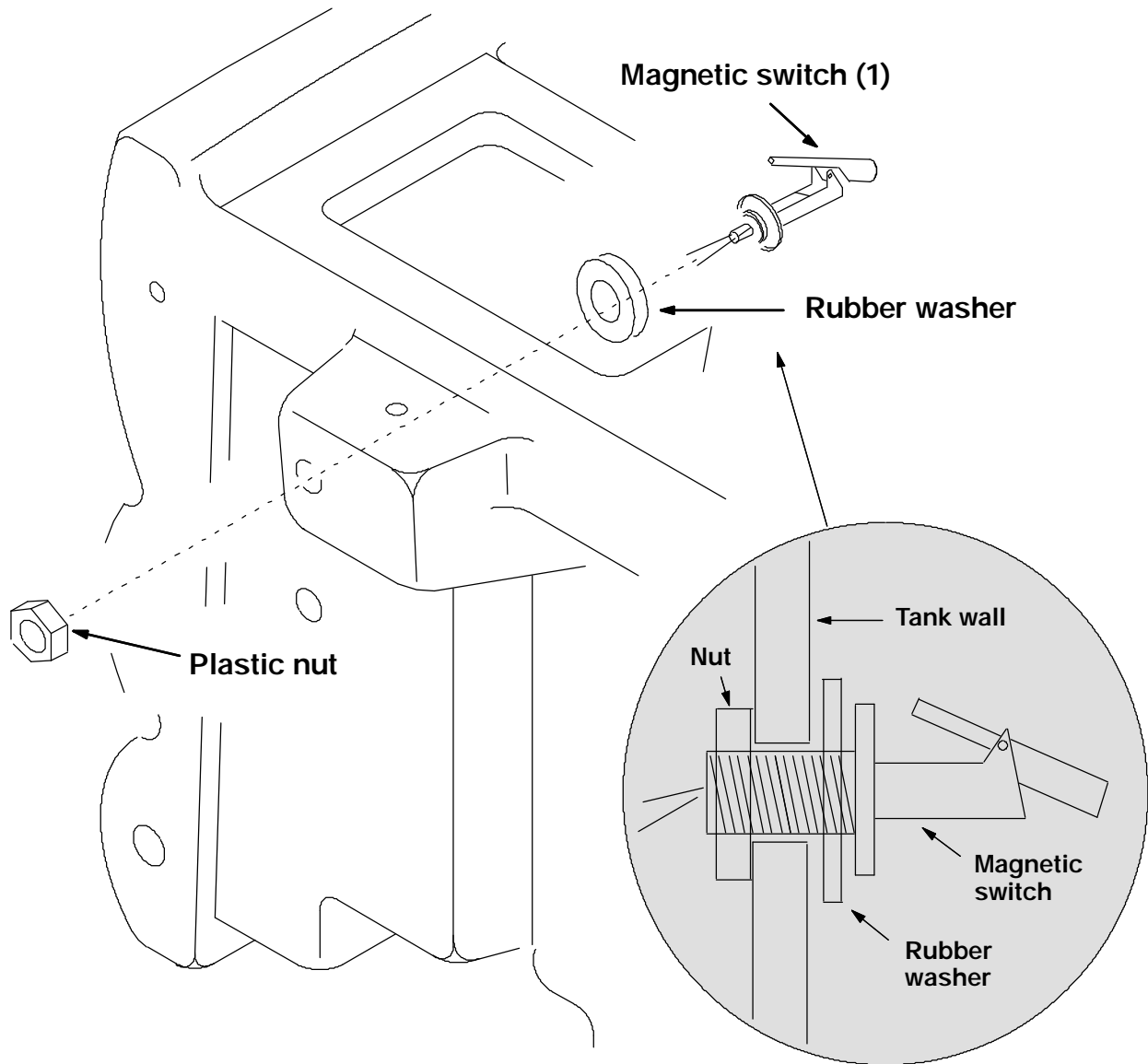


FIG. 3 - Magnetic Switch Installation

4. Rotate the new magnetic switch (1) so the flat portion of the magnetic switch arm is pointed up and the tip of the "teeter totter" is angled down.
5. Carefully tighten the plastic nut.

NOTE: Do not over tighten the plastic nut. Snug the nut to the point where the rubber washer is just beginning to deform.

6. Insert one of the two switch wires in the "A" hole in the connector body. Push the wire in until the terminal clicks in place.
7. Insert the second of the two switch wires in the "B" hole in the connector body. Push the wire in until the terminal clicks in place.

*NOTE: The switch has **NO** polarity, so either wire can go in either hole.*

8. Snap the secondary lock on the rear of the connector body.
9. Plug the connector body back in the main electrical harness to the terminal body where the old switch was disconnected from.
10. Disengage the safety arm and lower the solution tank. Operate the machine and check the new magnetic switch for proper operation.

BILL OF MATERIALS FOR LEVEL SENSOR REPLACEMENT SWITCH KIT 222827

Ref.	TENNANT Part No.	Description	Qty.
1	222822	Magnetic switch	1

TENNANT COMPANY
P. O. Box 1452
Minneapolis, MN 55440-1452