



INSTRUCTION BULLETIN

No. 3725
Machine: 355/385/355E
Published: 5-98/01
System: CHASSIS

NOTE: DO NOT DISCARD the Parts List from the Instruction Bulletin. Place the Parts List in the appropriate place in your machine manual for future reference. Retaining the Parts List will make it easier to reorder individual parts and will save you the cost of ordering an entire kit.

NOTE: Numbers in parenthesis () are reference numbers for parts listed in Bill of Materials.

Installation Instructions for Kit number 84570

SYNOPSIS / PROBLEM:

This kit contains the parts needed to replace the hopper cover on the machines listed above. Please follow step-by-step instructions.

SPECIAL TOOLS / CONSIDERATIONS: 1. Hand drill 2. 3/8 in. extra long drill bit
3. 3/16 in. extra long drill bit 4. 9/32 regular drill bit

(Estimated Time to complete: 2 hours)

INSTALLATION:

(Refer to FIG. 1 and 2)

FOR SAFETY: Before leaving or servicing machine, stop on level surface and set parking brake. Then turn off machine and remove key.

1. Remove and discard the old hopper cover, latch, and gas springs. Retain the mounting hardware. *Note: the new hood is held down by the force of the gas springs.*
2. Prepare the new hopper cover for installation. Use **IB 3657** from spring bracket kit # 70182 for proper hopper cover preparation instructions. (Refer to Fig. 1)
3. Install the gas spring ball studs (16) on the spring brackets inside the new cover. (Refer to Fig. 1)
4. Install the new re-worked hopper cover on the hopper. Be careful not to damage the cover when setting on the hopper. (Refer to Fig. 1)
5. Align the holes in the back of the hopper with the holes in the mounting hinges. Reinstall the existing hardware and tighten.

NOTE: Center the new cover on the hopper before tightening the hardware.

6. Open the cover and install the two new gas springs (14) and safety clips (15). Close the hopper cover. (Refer to Fig. 1)

NOTE: Use an overhead hoist or a prop rod to hold up the cover when installing the gas springs.

7. Start the machine and lift the hopper. Engage the hopper safety arm.
8. Install the hopper cover safety cable. See TO INSTALL SAFETY CABLE instructions. (Refer to Fig. 1 and 2)

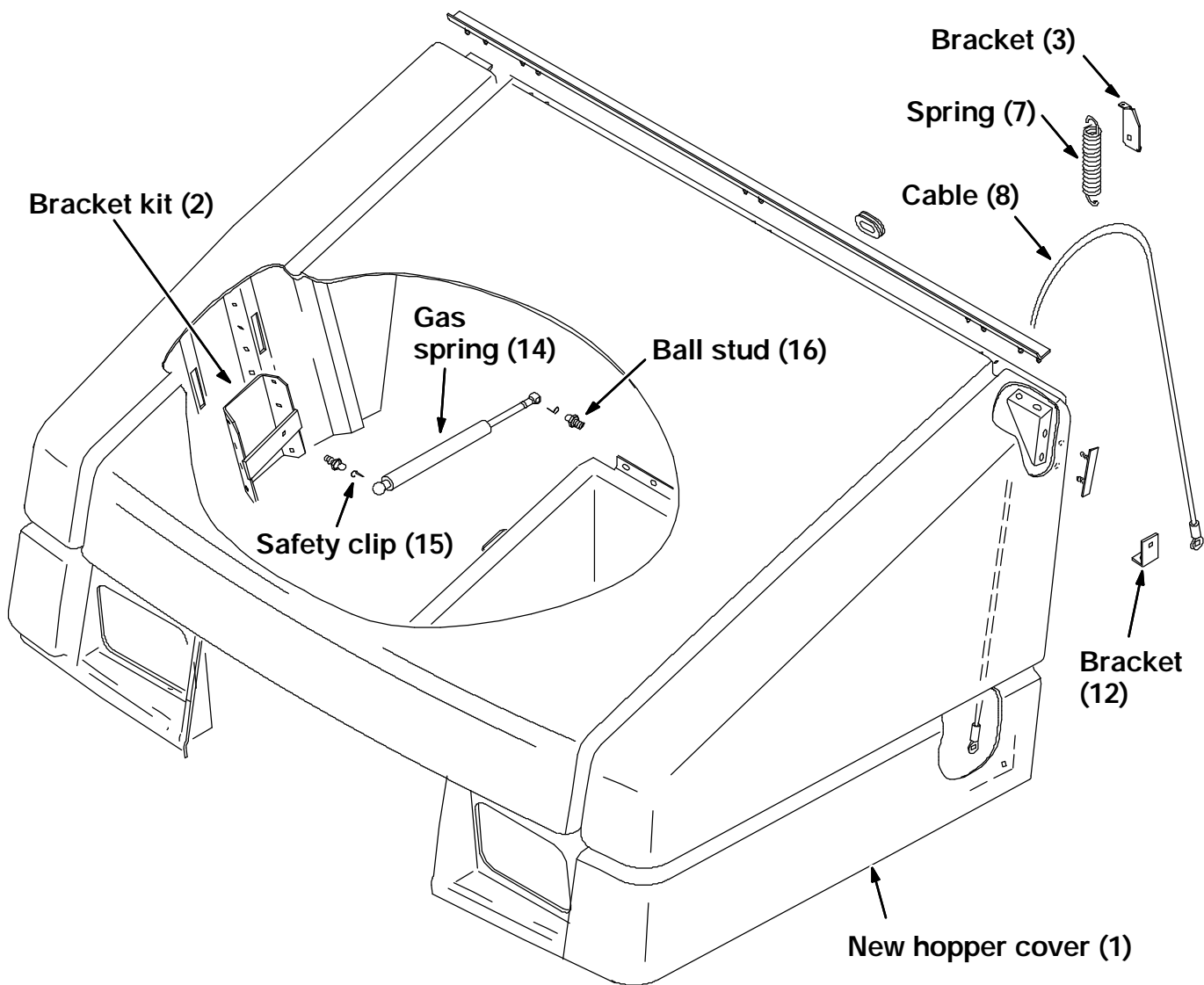


FIG. 1 - RH Hopper Cover Assembly

TO INSTALL SAFETY CABLE ON RH MACHINE:

(Refer to FIG. 1 and 2)

1. Lift the hopper and engage the safety arm.

FOR SAFETY: Before leaving or servicing machine, stop on level surface and set parking brake. Then turn off machine and remove key.

2. Drill a 3/8 in. diameter hole (**see note in fig. 2**) in the top left corner of the lift arm lintel using the dimensions in Fig. 1 (A). (Refer to Fig. 2)
3. Drill a 9/32 in. diameter hole in the top of the machine frame 4 x 4 tube using the dimensions in Fig. 1 (B). (Refer to Fig. 2)
4. Install the cable bracket (12) in the hole that was drilled in the frame tube in step 2. Use the thread rolling screw (13). Tighten to 15 - 20 ft lb. (Refer to Fig. 1 and 2)
5. Connect one end of the safety cable (8) to the cable bracket (12). Use one hex screw (9), flat washer (10), and nyloc nut (11). Tighten to 14 - 18 ft lb. (Refer to Fig. 1 and 2)

6. Connect the other end of the safety cable through the hole and bracket in the lower LH corner of the hopper cover (1). Use one hex screw (9), washer (10), and nyloc nut (11). Tighten to 6 - 8 ft lb. (Refer to Fig. 1 and 2)
7. Install the tension spring bracket (3) in the hole that was drilled in the frame tube in step 3. Use one hex screw (4), flat washer (5), and flange nut (6). Tighten to 14 - 18 ft lb. (Refer to Fig. 1 and 2)

NOTE: The tension spring bracket is installed with the spring hole facing up. (Refer to Fig. 1)

8. Install one end of the tension spring (7) in the hole on the spring bracket (3) and the other end hooked around the safety cable (8). (Refer to Fig. 1)

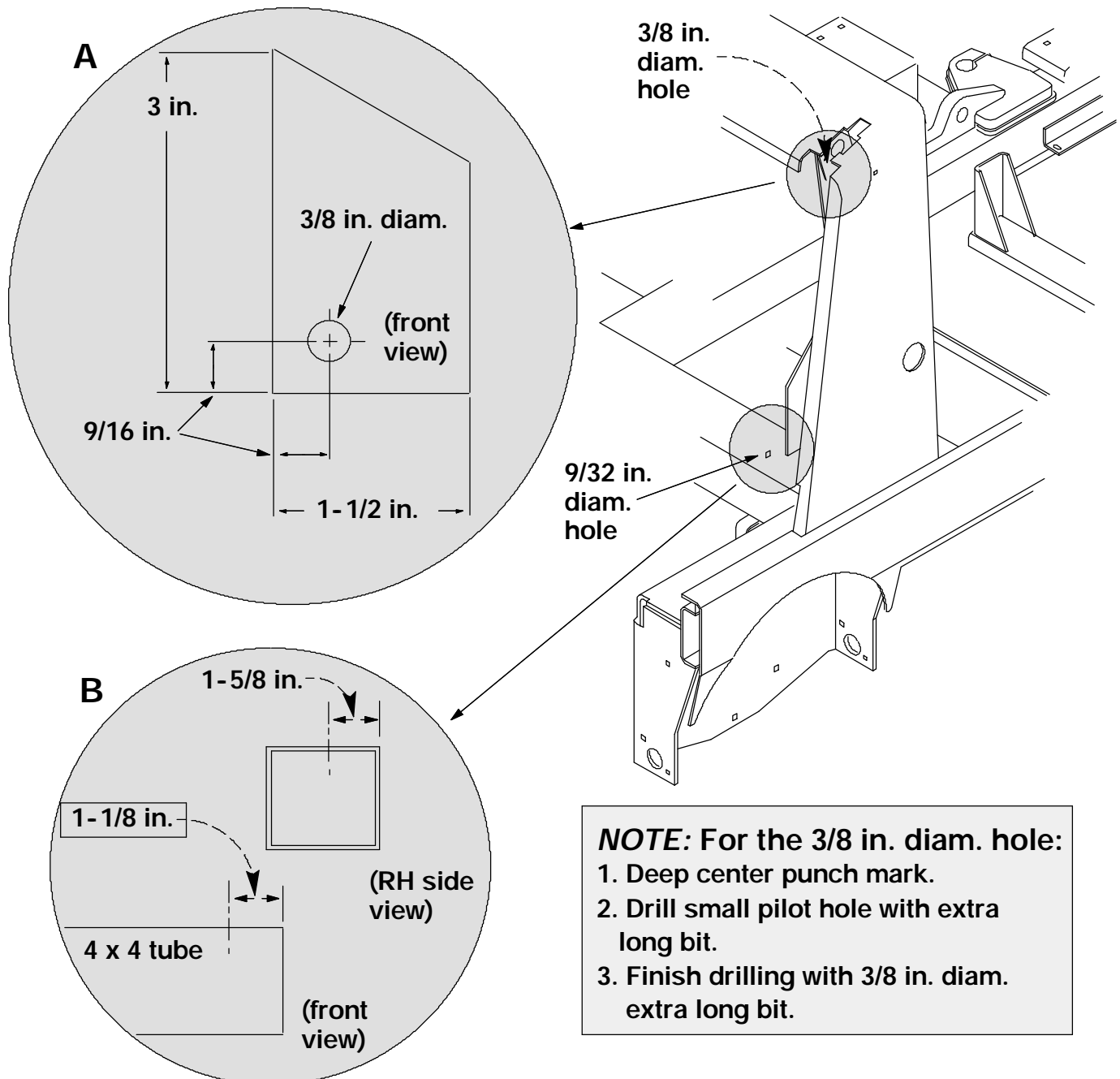


FIG. 2 - Safety Cable Mount Hole Locations

TO INSTALL SAFETY CABLE ON LH MACHINE:

(Refer to FIG. 2, 3, and 4)

1. Lift the hopper and engage the safety arm.

FOR SAFETY: Before leaving or servicing machine, stop on level surface and set parking brake. Then turn off machine and remove key.

2. Drill a 3/8 in. diameter hole in the top right corner of the lift arm lintel using the dimensions in Fig. 1 (A) on the opposite side. (Refer to Fig. 2)
3. Drill a 9/32 in. diameter hole in the top of the machine frame 4 x 4 tube using the dimensions in Fig. 1 (B) on the opposite side. (Refer to Fig. 2)
4. Install the cable bracket (12) in the hole that was drilled in the frame tube in step 2. Use the thread rolling screw (13). Tighten to 15 - 20 ft lb. (Refer to Fig. 2)
5. Connect one end of the safety cable (8) to the cable bracket (12). Use one hex screw (9), flat washer (10), and nyloc nut (11). Tighten to 14 - 18 ft lb. (Refer to Fig. 2)
6. The cable bracket in the lower left corner of the new cover must be moved to the right side. See; TO RELOCATE SAFETY CABLE BRACKET ON LH MACHINE instructions. (Refer to Fig. 2, 3, and 4)

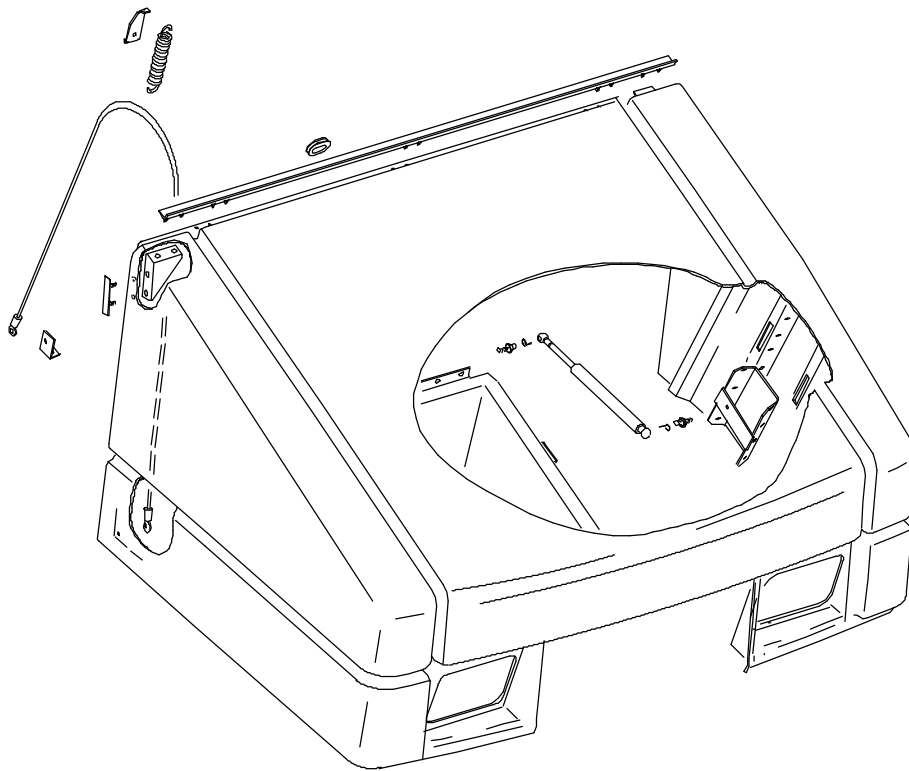


FIG. 3 - LH Hopper Cover Safety Cable Installation

7. Connect the other end of the safety cable through the hole and bracket in the lower RH corner of the hopper cover (1). Use one hex screw (9), washer (10), and nyloc nut (11). Tighten to 6 - 8 ft lb. (Refer to Fig. 2, 3, and 4)
8. Install the tension spring bracket (3) in the hole that was drilled in the frame tube in step 3. Use one hex screw (4), flat washer (5), and flange nut (6). Tighten to 14 - 18 ft lb. (Refer to Fig. 3)

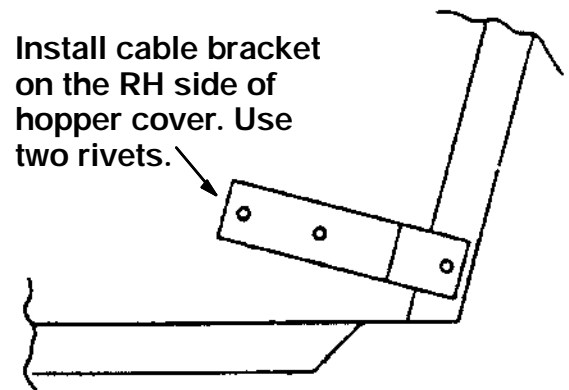
NOTE: The tension spring bracket is installed with the spring hole facing up. (Refer to Fig. 3)

9. Install one end of the tension spring (7) in the hole on the spring bracket (3) and the other end hooked around the safety cable (8). (Refer to Fig. 3)
10. Raise and lower the hopper cover a few times to check for proper operation.
11. Check the new cover for a proper seal to the hopper

TO RELOCATE SAFETY CABLE BRACKET ON LH MACHINE:

(Refer to FIG. 4)

1. Use a 3/16 in. drill bit to drill out the two rivets holding the cable bracket to the lower LH side of the new cover. Remove the bracket and position it on the other side of the hopper cover. See Fig. 3 for the hole dimensions. (Refer to Fig. 4)



**INSIDE VIEW R. H. SIDE OF
HOPPER COVER**

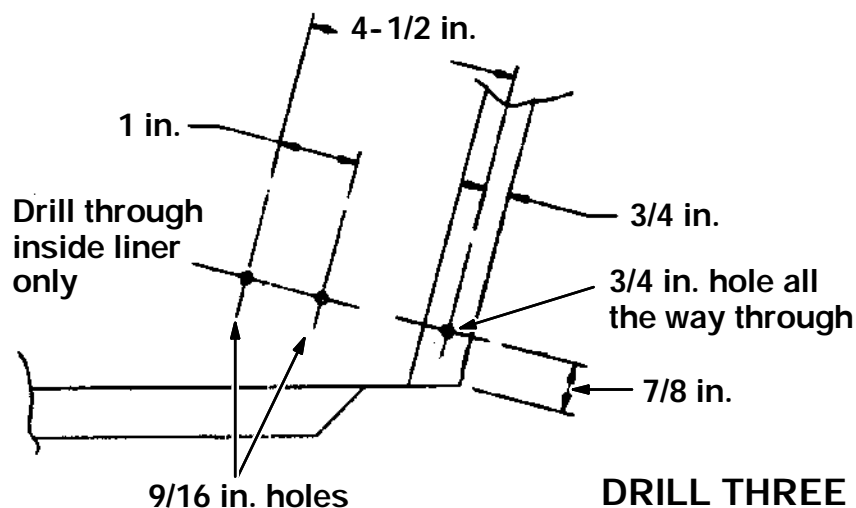


FIG. 4 - Cable Bracket Holes For LH Machine

2. Install the cable bracket on the RH side of the new cover using two rivets. (Refer to Fig. 3)

BILL OF MATERIALS FOR HOPPER COVER KIT 84570

Ref.	TENNANT Part No.	Description	Qty.
1	84569	Hopper cover	1
2	70182	Hopper cover spring bracket kit	1
3	70193	Cable spring bracket	1
4	39277	M8 x 25mm hex screw	1
5	32491	5/16 in. flat washer	1
6	07791	M8 flange nut	1
7	74353	Tension spring	1
8	74352	Hopper cover safety cable	1
9	16931	M8 x 20mm hex screw	2
10	39349	5/16 in. flat washer (SAE)	2
11	08709	M8 nyloc nut	2
12	84571	Safety cable bracket	1
13	41195	5/16 in. x 3/4 in. hex screw	1
14	64535	Gas spring, 120lbs.	2
15	64595	Safety clip	4
16	58494	Ball stud	4
17	01760	5/16 in. nyloc nut (thin)	4

TENNANT COMPANY
P. O. Box 1452
Minneapolis, MN 55440-1452