



# INSTRUCTION BULLETIN

No. 3720

Machine: 255/360/365/527

Published: 5-95/00

System: ELECTRICAL

**NOTE: DO NOT DISCARD the Parts List from the Instruction Bulletin. Place the Parts List in the appropriate place in your machine manual for future reference. Retaining the Parts List will make it easier to reorder individual parts and will save you the cost of ordering an entire kit.**

*NOTE: Numbers in parenthesis ( ) are reference numbers for parts listed in Bill of Materials.*

Repair parts list for Kit number 70286

## SYNOPSIS / PROBLEM:

This kit contains the parts needed to replace the starter on the machines listed above.

**SPECIAL TOOLS / CONSIDERATIONS:** This is a direct replacement for the present starter. Keep this repair parts list for future reference. (Estimated Time to complete: 1 hour)

## REPAIR PARTS LIST FOR KIT 70286

Ref.	TENNANT Part No.	Description	Qty.
1	70304	Gear	1
2	70305	Drive end shield	1
3	70306	Sintered-metal bushing	1
4	70307	Fork lever	1
5	70308	Solenoid	1
6	70309	Flat head screw	3
7	70310	Armature	1
8	70300	Commutator end shield	1
9	70302	Sintered-metal bushing	1
10	70172	Hex screw	2
11	84562	Closure cap	1
12	85463	Oval-head screw	2
13	85464	Brush holder	1
14	85465	Overrunning-clutch	1
15	85466	Bushing	1
16	85467	Stator frame	1
17	85468	Washer and connector set	1

TENNANT COMPANY  
P. O. Box 1452  
Minneapolis, MN 55440-1452

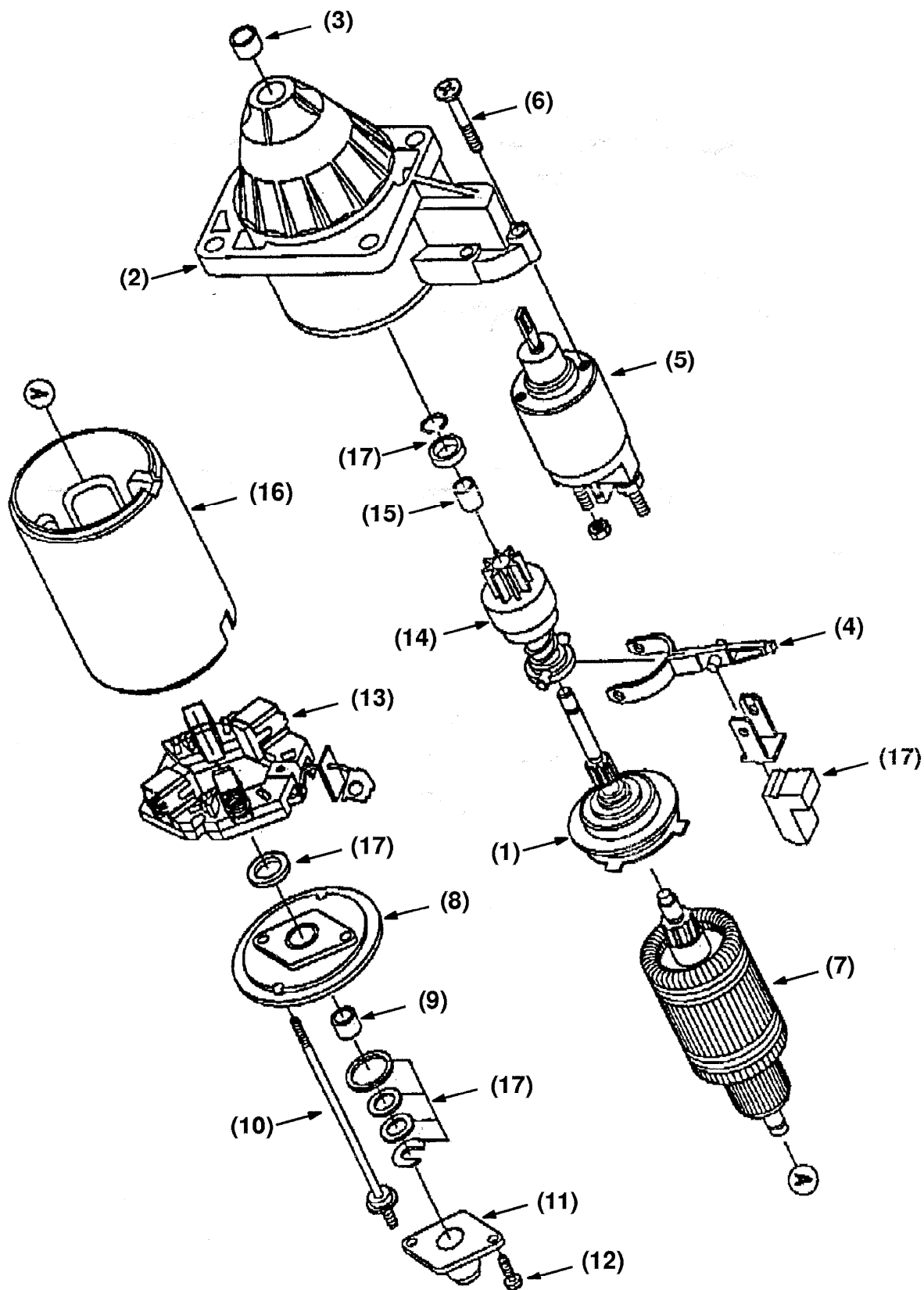


FIG. 1 - Starter Parts Breakdown