



INSTRUCTION BULLETIN

No. 3524
Machine: 8400
Published: 8-98/01
System: ELECTRICAL

NOTE: DO NOT discard Parts List from Instruction Bulletin. Place Parts List in the appropriate place in your machine manual for future reference. Retaining the Parts List will make it easier to reorder individual parts and will save you the cost of ordering an entire kit.

NOTE: Numbers in parenthesis () are reference numbers for parts listed in Bill of Materials.

Installation Instructions for Replacement Kits:

73205 for backlighting lamps
73230 for touch panel
73233 for circuit board
73236 for instrument panel

These kits contain parts needed to install lamps, instrument panels, touch panels and circuit boards on the machines listed above. Please follow step-by-step instructions.

PREPARATION:

FOR SAFETY: Before leaving or servicing machine, stop on level surface and set parking brake (if equipped on machine). Then turn off machine and remove key.

1. Disconnect battery cables from machine.



WARNING: Always disconnect battery cables from machine before working on electrical components.

2. **FOR CONTACT WITH CIRCUIT BOARD:** Attach ESD grounding strap to your wrist and attach clip to machine frame.

NOTE: The grounding strap is used to prevent static electricity from damaging the machine's circuit board.

3. Remove three mounting bolts from instrument panel assembly. Retain hardware.
4. Carefully pull instrument panel assembly up and tilt forward, resting assembly on machine frame.
5. Disconnect wire harness from case assembly by removing retaining screw with a 5/32 inch (4 mm) metric Allen wrench.
6. Remove existing instrument panel from instrument panel shroud by removing two mounting screws holding top retaining angle and loosen screws holding lower retaining angle. Retain hardware for installation of new parts.

LAMP INSTALLATION:

(Refer to Figure 1)

1. Place instrument panel face down. Then remove six pan head screws from case assembly. Retain hardware.
2. Remove four pan head screws from one end of case box, sealing connector, then remove case box from case assembly. Retain hardware.
3. Turn burned-out lamps 1/4 turn, counterclockwise, and remove from circuit board.
4. Install new lamps (1) in new sockets (2). Then install lamp assemblies on circuit board by turning sockets 1/4 turn clockwise.
5. Install case box on case cover with six existing pan head screws.

NOTE: Do not tighten pan head screws for lower retaining angle.

6. Install four pan head screws for connector seal.
7. Install case assembly on instrument panel shroud. Then install existing upper retaining angle with two existing pan head screws. Tighten two pan head screws for lower retaining angle.
8. Connect wire harness to instruction panel and hold in place with existing retaining screw.
9. Install instrument panel assembly on machine frame with existing hardware.

TOUCH PANEL ASSEMBLY INSTALLATION:

(Refer to Figure 1)

1. Place instrument panel face down. Then remove six pan head screws from case assembly. Retain hardware.
2. Remove four pan head screws from one end of case box, sealing connector, then remove case box from case assembly. Retain hardware.
3. Disconnect eleven pin connector and ground strip from circuit board.
4. Remove four pan head screws from circuit board, then remove circuit board from touch panel assembly. Retain circuit board and hardware.
5. Remove touch panel assembly from case cover.
6. Install new touch panel assembly (4) and new plastic sleeves (5) in case cover.
7. Install circuit board assembly on touch panel assembly with existing hardware.
8. Connect eleven pin connector and ground strip to circuit board.
9. Install case box on case cover with six existing pan head screws.

NOTE: Do not tighten pan head screws for lower retaining angle.

10. Install four pan head screws for connector seal.
11. Install case assembly on instrument panel shroud. Then install existing upper retaining angle with two existing pan head screws. Tighten two pan head screws for lower retaining angle.
12. Connect wire harness to case assembly and hold in place with existing retaining screw.

13. Install instrument panel assembly on machine frame with existing hardware.

INITIALIZATION INSTRUCTIONS

1. Power up machine.
2. Press and hold down "Pressure Button" until desired down pressure setting is indicated.
3. Initialization is complete.

CIRCUIT BOARD INSTALLATION:

(Refer to Figure 1)

1. Place instrument panel face down. Then remove six pan head screws from case assembly. Retain hardware.
2. Remove four pan head screws from one end of case box, sealing connector, then remove case box from case assembly. Retain hardware.
3. Remove one existing o-ring from case box and gasket from contact connector, on circuit board.
4. Disconnect eleven pin connector and ground strip from circuit board.
5. Remove four pan head screws from circuit board, then remove circuit board from touch panel assembly. Retain hardware.
6. Remove touch panel assembly from case cover. Then remove o-ring from case cover.
7. Install one o-ring (7) in case cover. Then install touch panel assembly in case cover.

NOTE: Grease may be used to hold o-ring in place for assembly.

8. Install new circuit board (6) on touch panel assembly with existing hardware.
9. Connect eleven pin connector and ground strip to circuit board.
10. Install one o-ring (7) in case box and connector gasket (8) on contact connector, aligning mounting holes.

NOTE: Grease may be used to hold o-ring in place for assembly.

11. Install case box on case cover with six existing pan head screws.

NOTE: Do not tighten pan head screws for lower retaining angle.

12. Install four pan head screws for connector seal.
13. Install case assembly on instrument panel shroud. Then install existing upper retaining angle with two existing pan head screws. Tighten two pan head screws for lower retaining angle.
14. Connect wire harness to case assembly and hold in place with existing retaining screw.
15. Install instrument panel assembly on machine frame with existing hardware.

INSTRUMENT PANEL ASSEMBLY INSTALLATION:

(Refer to Figure 1)

1. Connect wire harness to instrument panel and hold in place with existing retaining screw.
2. Install instrument panel on instrument panel assembly (9) with four existing mounting screws.
3. Install instrument panel assembly (9) on machine frame with existing hardware.

INITIALIZATION INSTRUCTIONS

Select initial down pressure setting.

1. Turn key switch on. (The engine can remain off.)
2. Press and hold down the "Scrub/Down Pressure" button until the desired down pressure setting is indicated.
3. Turn keyswitch off.

Reset the scrubbing down pressures to the factory settings.

1. Turn the key switch on (the engine can remain off) while holding the "Scrub/Down Pressure" button. Continue holding the "Scrub/Down Pressure" button until the maintenance light "wrench symbol" turns on.
2. While still holding the "Scrub/Down Pressure" button, activate the "Edge Scrub Brush" button. Continue holding both buttons until the maintenance light turns off.
3. Release both buttons, and turn the keyswitch off.

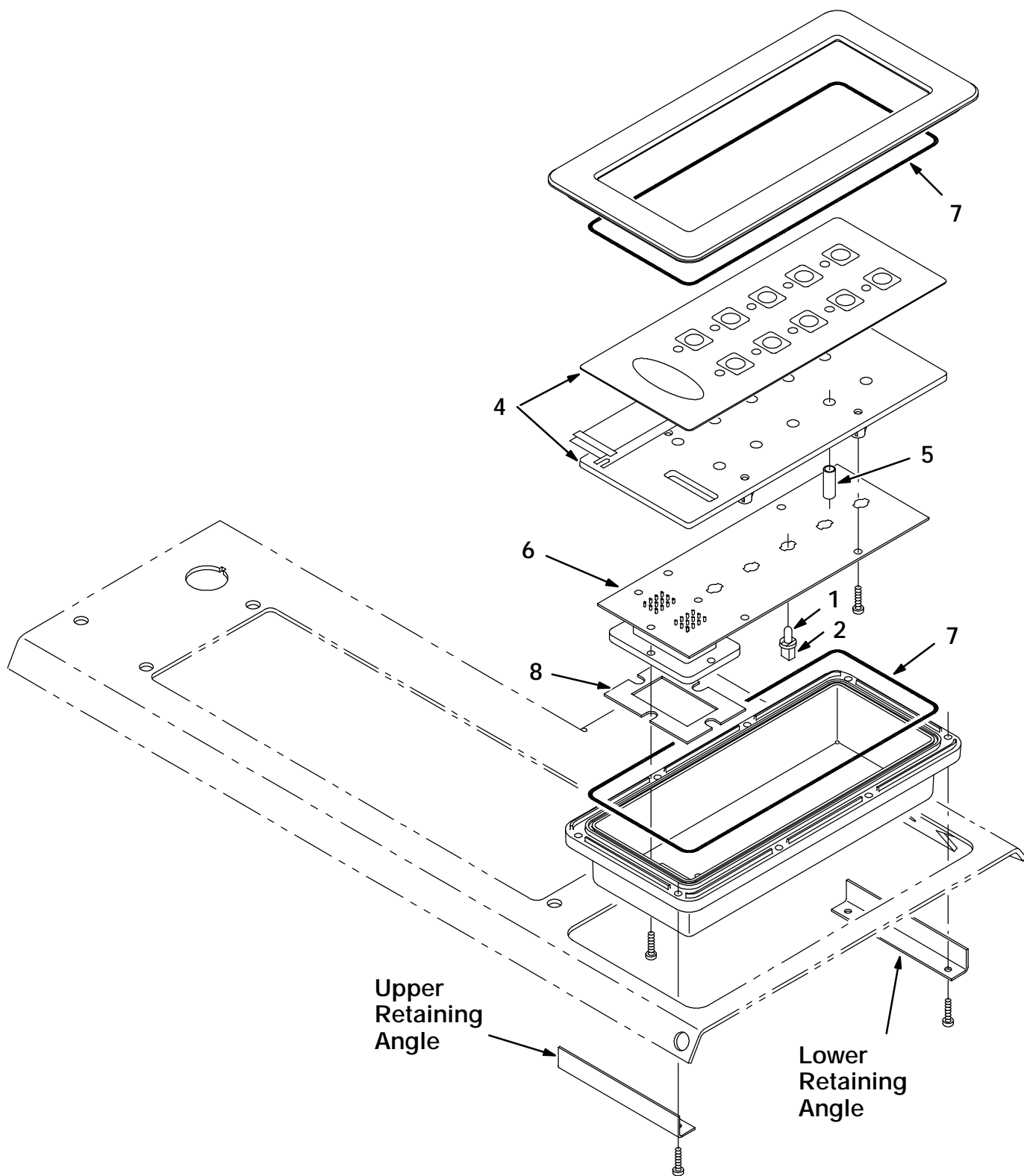


FIG. 1 – Instrument Panel Assembly

08992

BILL OF MATERIALS FOR LAMP REPLACEMENT KIT 73205

Ref.	TENNANT Part No.	Description	Qty.
1	59972	Subminiature lamp	5
2	59973	Lamp socket	5
3	27964	Grounding strap	1

BILL OF MATERIALS FOR TOUCH PANEL REPLACEMENT KIT 73230

Ref.	TENNANT Part No.	Description	Qty.
4	73238	Touch panel assembly	1
5	73224	Plastic sleeve, 1/4" B, 5/16" Dia, 1/2"	10
3	27964	Grounding strap	1

BILL OF MATERIALS FOR CIRCUIT BOARD REPLACEMENT KIT 73233

Ref.	TENNANT Part No.	Description	Qty.
6	73209	Circuit board assembly	1
7	73219	O-ring seal, 5/64" x 8-3/16"	2
8	56356	Connector gasket	1
3	27964	Grounding strap	1

BILL OF MATERIALS FOR INSTRUMENT PANEL REPLACEMENT KIT 73236

Ref.	TENNANT Part No.	Description	Qty.
9	73208	Instrument panel assembly	1

TENNANT COMPANY
P. O. Box 1452
Minneapolis, MN 55440-1452