



INSTRUCTION BULLETIN

No. 1842
Machines: 240, 260,
265, 280, 240EH,
500, 600
Published: 2-88

Installation Instructions for Valve Seal Kit SK 1842.

This kit contains seals for Cross Valves 42110, 42110-1, 48290, 53474A, and 54046. Use parts you need from the kit.

Please follow the step-by-step directions.

HYDRAULIC PRINCIPLES:

- * Cleanliness is extremely important when working with hydraulic components. Work in a clean, dustfree area. Dirt and foreign material in the hydraulic system can damage equipment and impair operation.
- * Before disconnecting hydraulic hoses or fittings, thoroughly clean the outside of the part to help prevent dirt entry into the system.
- * Mark hoses and ports for later correct reassembly.
- * Immediately cap disconnected hoses and plug open ports to help prevent dirt entry into system.
- * Discard any drained hydraulic fluid. Replenish hydraulic reservoir with new, approved hydraulic fluid.

PROCEDURE:

1. Park the machine on a level surface. Turn off the engine/motor and set the parking brake.

WARNING: Always turn off the engine/motor and set the parking brake before working on the machine.

2. Remove handle from valve.
3. Disconnect hoses to valve. Be sure to mark hoses for correct reassembly.
4. Remove end cap, detent housing, screws, and spool collar. Clean parts and inspect for burrs or damage.
5. Gently twist spool just enough to expose o-ring in the valve housing. Remove the old ring and replace with a new o-ring dipped in fresh hydraulic fluid. Repeat this operation for the other end of the spool.

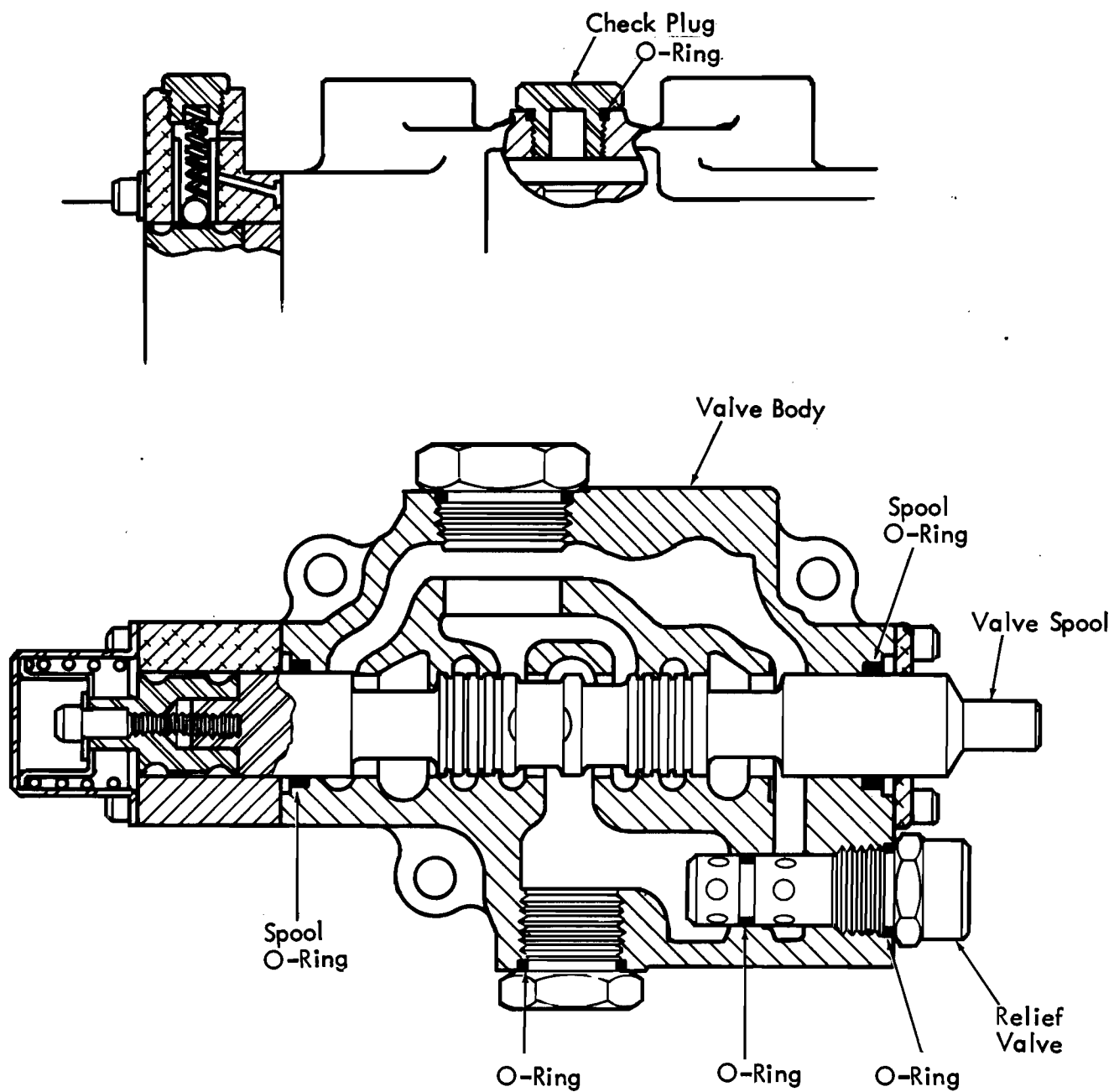
6. Install new plug o-ring.

7. When reassembling, apply loctite to screws, and torque to 6 - 12 foot-pounds.

BILL OF MATERIAL FOR SK 1447

Description	Qty.
Spool O-Rings, 1/8" x 1" I.D.	2
Check Plug O-Ring, 7/8" x 21/43" I.D.	1
Plug Seal O-Ring	1
Relief Seat Kit	1
O-Ring .097 W x .755 I.D.	
O-Ring .312 I.D. x .438 O.D. x .062 W	
O-Ring .562 I.D. x .688 O.D. x .052 W	
Backup .562 I.D. x .688 O.D. x .047 W	
Backup .312 I.D. x .438 O.D. x .047 W	
O-Ring .375 I.D. x .500 O.D. x .062 W	

TENNANT COMPANY
P. O. Box 1452
Minneapolis, MN 55440-1452
(612)540-1200



TYPICAL CROSS-SECTION (VALVE NO. 42110-1)
SHOWING LOCATION OF SEALS