



INSTRUCTION BULLETIN

No. 9045271
Machine: S16
Published: 02-2021
Rev. 00

NOTE: DO NOT DISCARD the Parts List from the Instruction Bulletin. Place the Parts List in the appropriate place in the machine manual for future reference. Retaining the Parts List will make it easier to reorder individual parts and will save the cost of ordering an entire kit.

NOTE: Numbers in parenthesis () are reference numbers for parts listed in Bill of Materials.

Installation instructions for **kit number 9045269**

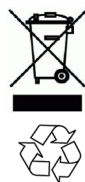
Kit installation must be performed by TennantTrue[®] service or an authorized service provider.

SYNOPSIS:

This kit contains the parts needed to replace the main sweep circuit board on S16 sweepers.
Please follow step-by-step instructions.

SPECIAL TOOLS / CONSIDERATIONS: Tennant Service device with Tennant Service Diagnostics software.

(Estimated time to complete: 1 hour)



PROTECT THE ENVIRONMENT

Please dispose of packaging materials, used machine components such as batteries and fluids in an environmentally safe way according to local waste disposal regulations.

Always remember to recycle.

PREPARATION:

NOTE: Only authorized Tennant Service Personnel can replace the main sweep circuit board on the S16 sweeper.

FOR SAFETY: Before leaving or servicing machine, stop on level surface, turn off machine, and remove key.

1. Disconnect the battery cable from the machine.



WARNING: Always disconnect battery cables from machine before working on electrical components.

INSTALLATION:

NOTE: To avoid damaging electronic components, a static ground strap (5) must be worn at all times while handling electrical components. Attach the other end of the static ground strap to the machine chassis.

1. Remove the left side cover from the machine. Set the left side cover aside.
2. Remove the controls cover box from the control housing. Set the controls cover box and hardware aside. (Fig. 1/Fig. 4)

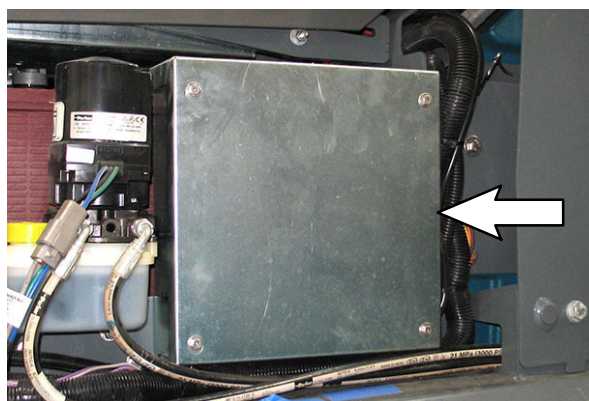


FIG. 1

3. Disconnect all main wire harness connectors from the main sweep control board. Set aside all hardware used to secure main wire harness connections to the main sweep control board. (Fig. 4)
4. Remove the six pan screws and nylon washers securing the main sweep board to the control housing. Discard the removed pan screws and nylon washers. (Fig. 2/Fig. 4)

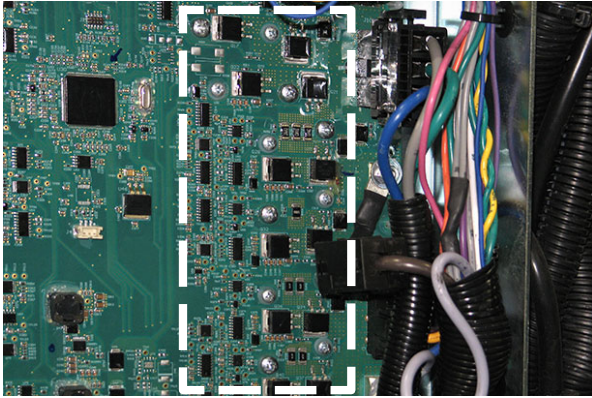


FIG. 2

5. Carefully squeeze the plastic standoffs securing the main sweep circuit board to the control housing to release the circuit board from the control housing and remove the main sweep circuit board. Discard the removed main sweep circuit board. (Fig. 4)
6. Remove the stand-offs previously used to hold the main sweep circuit board to the control housing from the control housing. Discard the stand-offs. (Fig. 4)
7. Install new stand-offs (2) where the stand-offs that were removed from the control housing in the previous step were located. (Fig. 4)
8. Place the new main sweep circuit board (1) onto the stand-offs (2) install into the control housing in the previous step. (Fig. 4)

9. Use the six pan screws (3) and six nylon washers (4) to secure the main sweep circuit board (1) into the control housing. (Fig. 4)
10. Reconnect the main wire harness to the main sweep circuit board (1). (Fig. 4)
11. Reinstall the controls cover box onto the control housing. (Fig. 4)
12. Reinstall the left side cover onto the machine.
13. Reconnect the battery cable to the machine.

NOTE: A Tennant Service device equipped with Tennant Service Diagnostics software is required to update the machine firmware after the main sweep circuit board (1) is replaced. Refer to the S16 SERVICE MANUAL for instructions how to update the machine firmware after replacing the main sweep circuit board (1).

14. Plug machine USB cable into service device and reconfigure the machine for the new main sweep circuit board. (Fig. 3)



FIG. 3

15. Disconnect the service device/USB cable from the machine USB connection.
16. Turn key switch ON and test machine. Ensure all machine systems are fully operational.

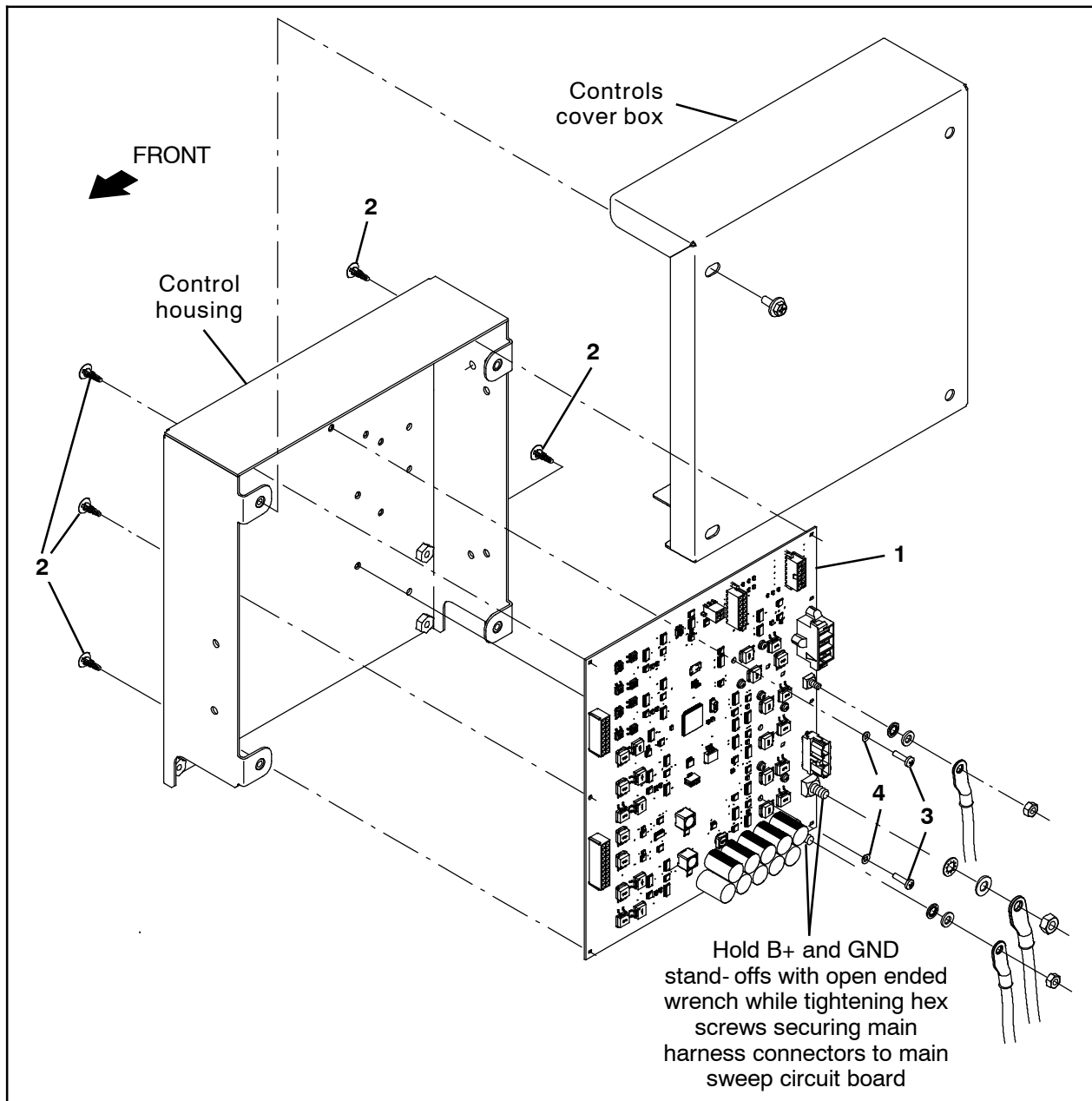


FIG. 4

Bill Of Materials For Circuit Board Kit, Main Sweep, CI [S16] - 9045269 *

Ref.	Tennant Part No.	Description	Qty.
1	1237558	Circuit Board Assy [Sweep, Jetmore]	1
2	1210399	Stand- Off, Circuit Board [0.25"]	8
3	06927	Screw, Pan, Phl, M4 X 0.70 X 16, 4.8	6
4	1202860	Washer, Flat, 0.17B 0.31D .03, Nyl	6
5	27964	Strap, Ground, Static, Disposable	1

** NOTE: Only authorized Tennant Service Personnel can install this main sweep circuit board kit onto the S16 sweeper.*

TENNANT COMPANY
P. O. Box 1452
Minneapolis, MN 55440-1452