



INSTRUCTION BULLETIN

No. 9045270
Machine: S16
Published: 02-2021
Rev. 00

NOTE: DO NOT DISCARD the Parts List from the Instruction Bulletin. Place the Parts List in the appropriate place in the machine manual for future reference. Retaining the Parts List will make it easier to reorder individual parts and will save the cost of ordering an entire kit.

NOTE: Numbers in parenthesis () are reference numbers for parts listed in Bill of Materials.

Installation instructions for **kit number 9045253**

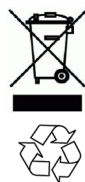
Kit installation must be performed by TennantTrue[®] service or an authorized service provider.

SYNOPSIS:

This kit contains parts needed to replace membrane panel/control board assembly on S16 sweepers.
Please follow step-by-step instructions.

SPECIAL TOOLS / CONSIDERATIONS: Tennant Service device with Tennant Service Diagnostics software.

(Estimated time to complete: 45 minutes)



PROTECT THE ENVIRONMENT

Please dispose of packaging materials, used machine components such as batteries and fluids in an environmentally safe way according to local waste disposal regulations.

Always remember to recycle.

PREPARATION:

NOTE: Only authorized Tennant Service Personnel can replace the membrane panel/control board assembly on the S16 sweeper.

1. If machine is operable, remove the front access panel from the steering channel and connect a USB cable to the service device and the machine. Use Tennant Service Diagnostics software to get machine configuration information. (Fig. 1)



FIG. 1

NOTE: If machine is inoperable, contact T.A.C. (Technical Assistance Center) for machine configuration information.

FOR SAFETY: Before leaving or servicing machine, stop on level surface, turn off machine, and remove key.



WARNING: Always disconnect battery cables from machine before working on electrical components.

2. Disconnect the battery cable from the machine.

INSTALLATION:

NOTE: To avoid damaging electronic components, a static ground strap (17) must be worn at all times while handling electrical components. Attach the other end of the static ground strap to the machine chassis.

1. Remove the hardware securing the membrane panel/control board assembly to the front shroud. Discard the hardware. (Fig. 2/Fig. 5)



FIG. 2

2. Carefully lift the membrane panel from the front shroud. Do not break any wire/cable connections when lifting the panel from the front shroud. (Fig. 3/Fig. 5)

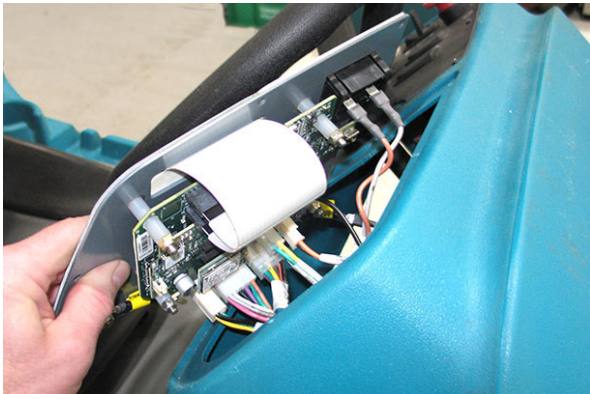


FIG. 3

3. Disconnect all wires/cables from the membrane panel/control board assembly. (Fig. 3)
4. Discard the removed membrane panel/control board assembly.

5. Connect the wires/cables previously connected to the removed membrane panel/control board assembly to the new membrane panel/control board assembly (1)(2). (Fig. 5)
6. Place the membrane panel/control board assembly (1)(2) onto the front shroud and use the five pan screws (7) to secure the membrane panel/control board assembly to the front shroud. (Fig. 2/Fig. 5)
7. Reconnect the battery cable to the machine.

NOTE: A Tennant Service device equipped with Tennant Service Diagnostics software is required to reconfigure the machine after the membrane panel/control board assembly (1)(2) are replaced. Refer to the S16 SERVICE MANUAL for instructions how to reconfigure machine after replacing the membrane panel/control board assembly.

8. Connect a USB cable to the service device and the machine and reconfigure the machine for the new membrane panel/control board assembly. (Fig. 4)



FIG. 4

9. Disconnect the service device/USB cable from the machine USB connection.
10. Turn key switch ON and test machine. Press all the membrane panel buttons to ensure the correct machine function is activated when the corresponding button is pressed.

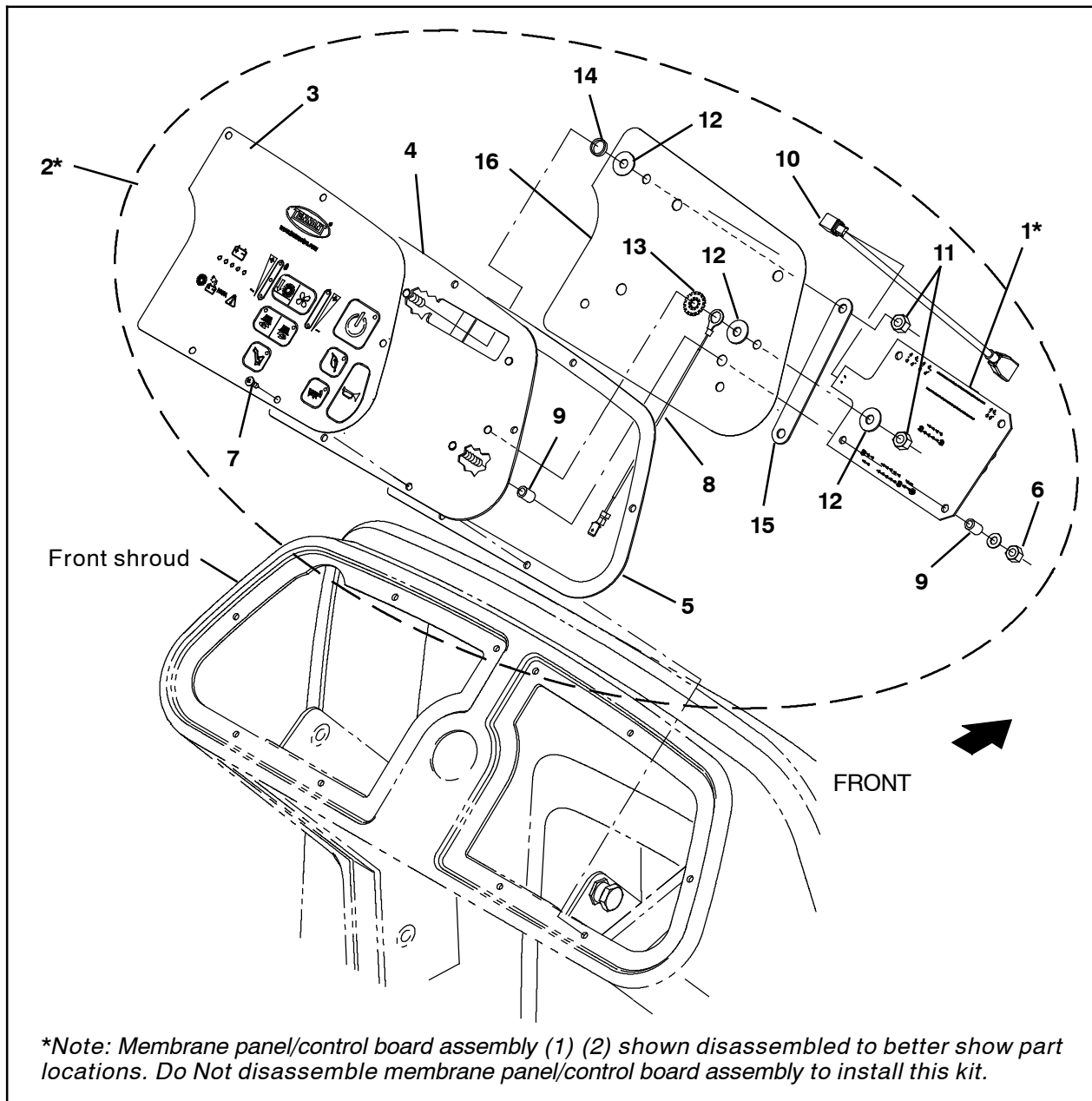


FIG. 5

Bill Of Materials For Circuit Board Kit, w/o Telem, CI [S16] - 9045253 *

	Ref.	Tennant Part No.	Description	Qty.
	1	1248505	Circuit Board [UI, RTOS]	1
▽	2	9045251	Parts, Phantom, Pnl, Cntrl [S16]	1
▲	3	1249459	Panel, Overlay [S16]	1
▲	4	1239539	Plate, Console, Rh Spacer	1
▲	5	1244647	Gasket, Dash, Rh	1
▲	6	09739	Nut, Hex, Lock, M5 X 0.80, NL, SS	4
▲	7	222267	Screw, Pan, Phl, 06- 20 X 0.50, FMG/AB	5
▲	8	1074344	Harness, Ele [Ring With .250M Tail]	1
▲	9	1252810	Spacer, Plstc, 0.20B 0.32D 0.47L, Nyl	8
▲	10	1228665	Cable [USB, Mini- B, Male 90D, Female]	1
▲	11	08708	Nut, Hex, Lock, M6 X 1.00, NL	4
▲	12	01684	Washer, Flat, 0.27B 0.69D .05, SS	6
▲	13	41140	Washer, Lock, Int- Ext, 0.25	1
▲	14	1071856	Spacer, 0.39B, 0.50D, 0.12L	3
▲	15	1254034	Bracket, Retainer, Console, Rh	1
▲	16	1253226	Cover, Console, Rh	1
	17	27964	Strap, Ground, Static, Disposable	1

** NOTE: Only authorized Tennant Service Personnel can install this control panel/circuit board kit onto the S16 sweeper.*

TENNANT COMPANY
P. O. Box 1452
Minneapolis, MN 55440-1452