



# INSTRUCTION BULLETIN

No. 9045217  
Machine: S16  
Published: 12-2020  
Rev. 00

**NOTE: DO NOT DISCARD the Parts List from the Instruction Bulletin. Place the Parts List in the appropriate place in the machine manual for future reference. Retaining the Parts List will make it easier to reorder individual parts and will save the cost of ordering an entire kit.**

*NOTE: Numbers in parenthesis ( ) are reference numbers for parts listed in Bill of Materials.*

Installation instructions for **kit number 9045209**

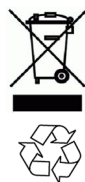
Kit installation must be performed by TennantTrue<sup>®</sup> service or an authorized service provider.

## SYNOPSIS:

This kit contains the parts needed to install the blue light kit onto S16 sweepers.  
Please follow step-by-step instructions.

## SPECIAL TOOLS / CONSIDERATIONS: NONE

(Estimated time to complete: 1.25 hours)



### PROTECT THE ENVIRONMENT

Please dispose of packaging materials, used machine components such as batteries and fluids in an environmentally safe way according to local waste disposal regulations.

Always remember to recycle.

## PREPARATION:

**FOR SAFETY: Before leaving or servicing machine, stop on level surface, turn off machine, and remove key.**

1. Lift the operator seat open and secure the seat into the open position.
2. Disconnect the battery cable from the machine.



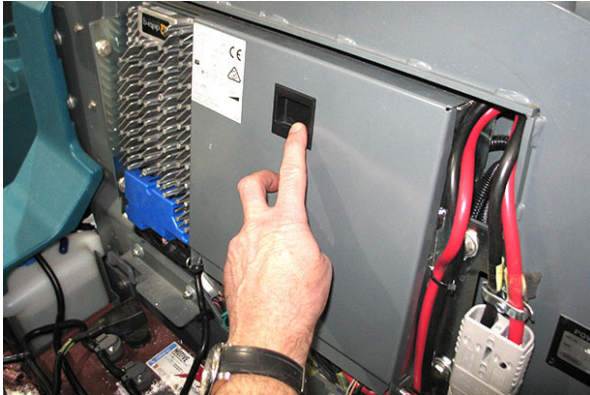
**WARNING: Always disconnect battery cables from machine before working on electrical components.**

3. Remove the front access panel from the steering channel to access the circuit breaker bracket. Set the front access panel aside. (Fig. 1)



FIG. 1

4. Open and/or remove the electrical compartment cover to access the rear breaker bracket and the main wire harness connections behind the rear breaker bracket. (Fig. 2)



**FIG. 2**

#### **INSTALLATION:**

1. Remove the M10 hex nut from one blue spot light (2) and use the M10 hex nut to mount the blue spot light onto the left tower weldment. (Fig. 4)
2. Connect a blue light harness (1) to the blue spot light (2) installed onto the left tower weldment in the previous step. (Fig. 4)
3. Route the blue light harness (1) connected to the blue spot light (2) in the previous step to the electrical compartment near the rear breaker bracket and connect the light harness to the main wire harness.
4. Drill a 1 in. (25.40 mm) hole and a 0.50 in. (12.70 mm) hole into the front shroud. (Fig. 3)
5. Remove the M10 hex nut from one blue spot light (2) and use the M10 hex nut to mount the blue spot light onto the front shroud. (Fig. 4)
6. Connect a blue light harness (1) to the blue spot light (2) installed onto the front shroud in the previous step. (Fig. 4)
7. Slide the grommet (4) onto the blue light harness (1) connected to the blue spot light (2) in the previous step. (Fig. 4)
8. Route the blue light harness (1) connected to the blue spot light (2) through the 1 in. (25.40 mm) hole drilled in the front shroud and connect the blue light harness to the main wire harness. (Fig. 4)
9. Insert the grommet (4) into the 1 in. (25.40 mm) hole in the front shroud. (Fig. 4)
10. Insert the 2.5- Amp circuit breaker (3) into circuit breaker location CB16 in the circuit breaker bracket. (Fig. 4)
11. Connect the main wire harness to the 2.5- Amp circuit breaker (3) installed in the previous step. (Fig. 4)
12. Reinstall the front access panel onto the steering channel.
13. Reinstall/close the electrical compartment cover.
14. Reconnect the battery cable to the machine.
15. Lower the operator seat.
16. Turn key switch ON and test the machine. Both blue spot lights should illuminate when the key switch is turned ON. If blue spot lights do not illuminate check wire connections.

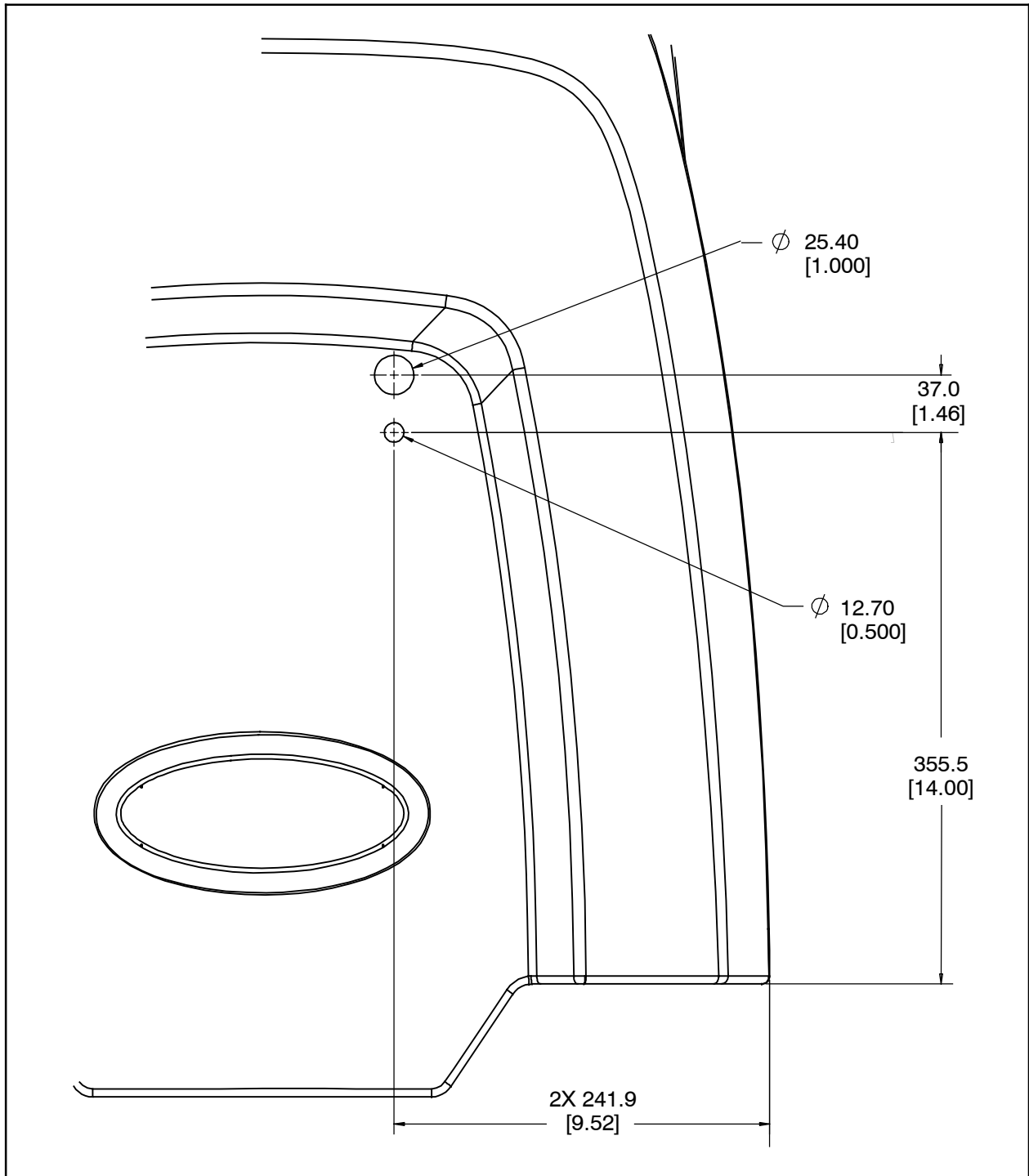


FIG. 3

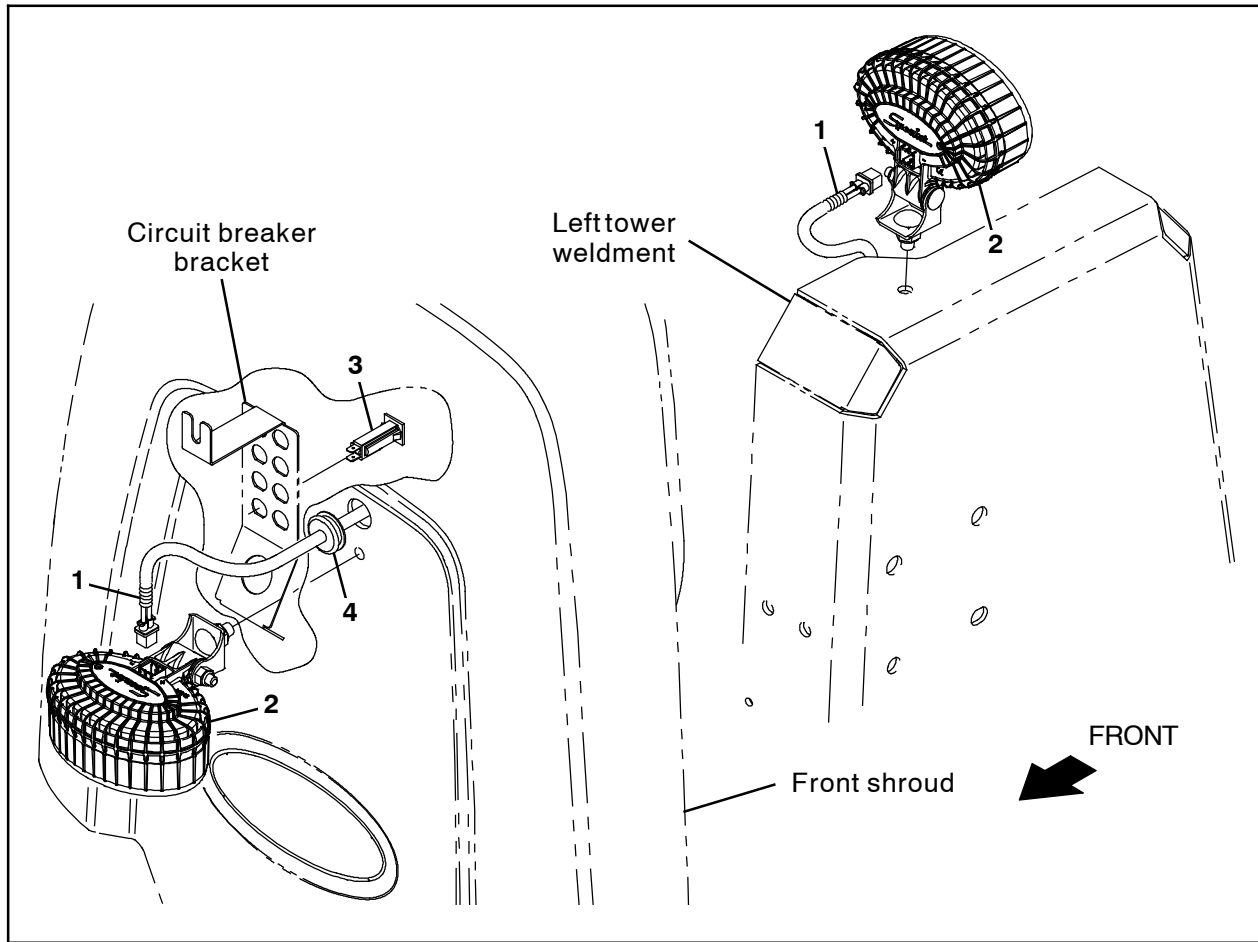


FIG. 4

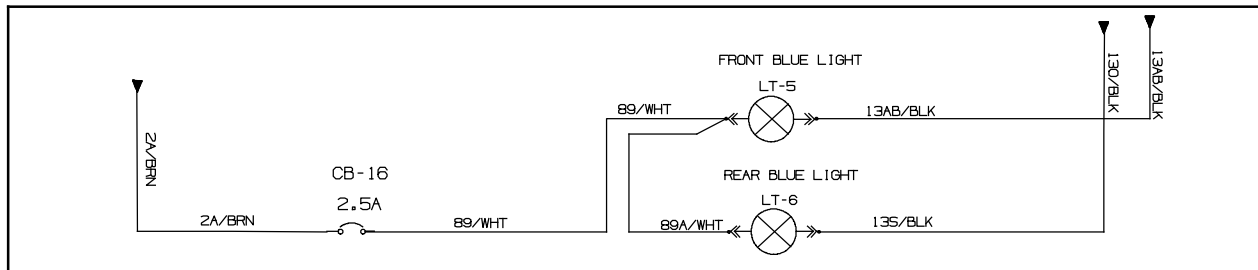


FIG. 5

**Bill Of Materials For Light Kit, Blue, CI [S16] - 9045209**

Ref.	Tennant Part No.	Description	Qty.
1	1076666	Harness, Ele, Light, Blue [S16]	2
2	1240687	Light, Spot, Blue, LED	2
3	1064184	Circuit Breaker 02.5A, Resettable	1
4	1253176	Grommet, Rbr, 0.38ID, F/1.0H, .25 Matl	1

TENNANT COMPANY  
P. O. Box 1452  
Minneapolis, MN 55440-1452