



INSTRUCTION BULLETIN

No. 9045099
Machine: S16
Published: 04-2021
Rev. 00

NOTE: DO NOT DISCARD the Parts List from the Instruction Bulletin. Place the Parts List in the appropriate place in the machine manual for future reference. Retaining the Parts List will make it easier to reorder individual parts and will save the cost of ordering an entire kit.

NOTE: Numbers in parenthesis () are reference numbers for parts listed in Bill of Materials.

Installation instructions for **kit number 9045098**

Kit installation must be performed by TennantTrue[®] service or an authorized service provider.

SYNOPSIS:

This kit contains the parts needed to install a propel wheel static ground wire onto S16 sweepers. Please follow step-by-step instructions.

SPECIAL TOOLS / CONSIDERATIONS: Long ohmmeter leads equipped with alligator clips (needed to measure resistance from static ground wire termination points to SEMS M8 hex screw securing static drag chain to frame of machine)

(Estimated time to complete: 2 hours)



PROTECT THE ENVIRONMENT

Please dispose of packaging materials, used machine components such as batteries and fluids in an environmentally safe way according to local waste disposal regulations.

Always remember to recycle.

PREPARATION:

FOR SAFETY: Before leaving or servicing machine, stop on level surface, turn off machine, and remove key.

1. Disconnect the battery cable from the machine.

WARNING: Always disconnect battery cables from machine before working on electrical components.

2. Machines equipped with optional left side brush only: Remove the left side brush from the machine. Set the left side brush and all mounting hardware aside.

3. Completely remove the front access panel from the steering channel to access the circuit breaker bracket. Set the front access panel and hardware aside. (Fig. 1)



FIG. 1

4. Remove the brush stop plate from the machine. Set the brush stop plate and all hardware aside. (Fig. 2)

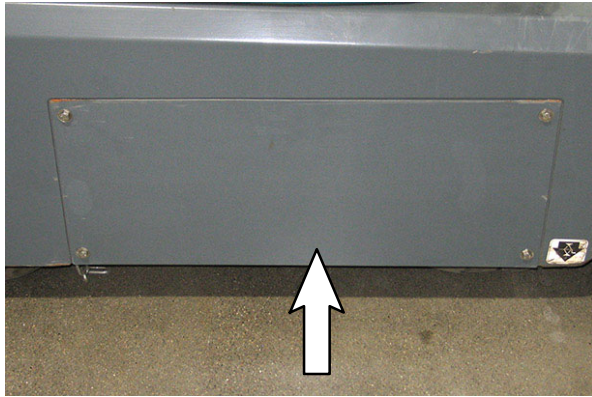


FIG. 2

INSTALLATION:

1. Crimp a ring terminal (3) onto the green wire (1).
2. Use existing hardware to connect end of green wire (1) with ring terminal (3) to the circuit breaker bracket. (Fig. 3)

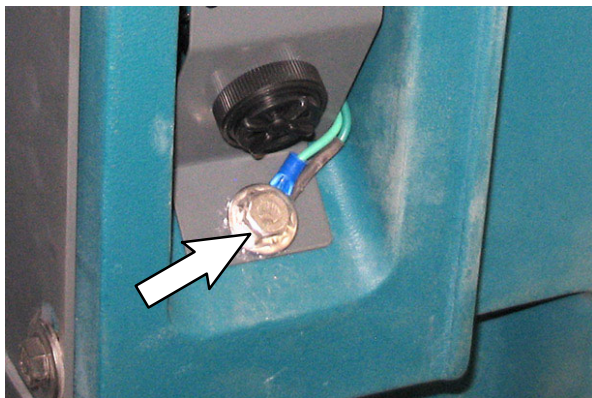


FIG. 3

3. Route the green wire (1) to the main wire harness near the top of the circuit breaker bracket. (Fig. 4)

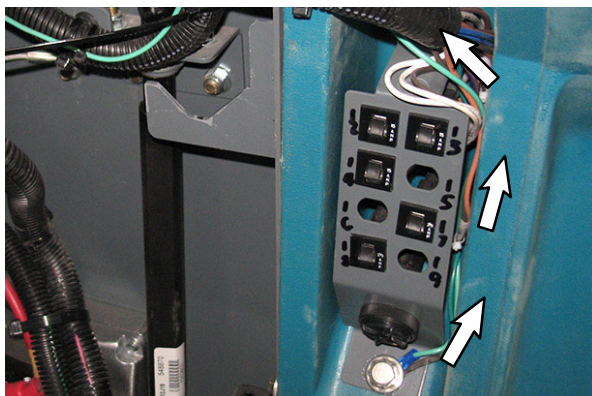


FIG. 4

4. Continue routing green wire (1) along the main wire harness and use two cable ties to secure the green wire (1) to the main wire harness so green wire will not inadvertently become tangled in the steering shaft. (Fig. 5)

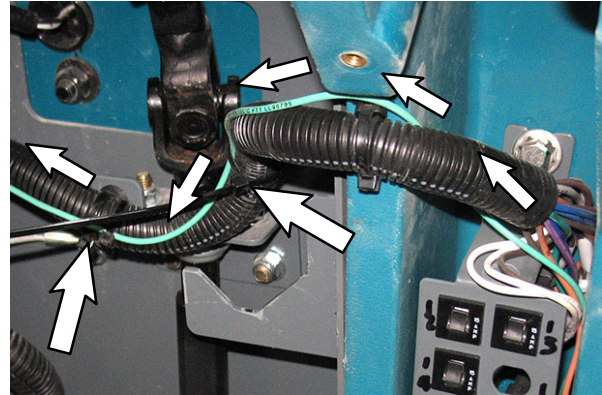


FIG. 5

5. Continue routing green wire (1) along the main wire harness and into the hole in the side of the steering channel. (Fig. 6)

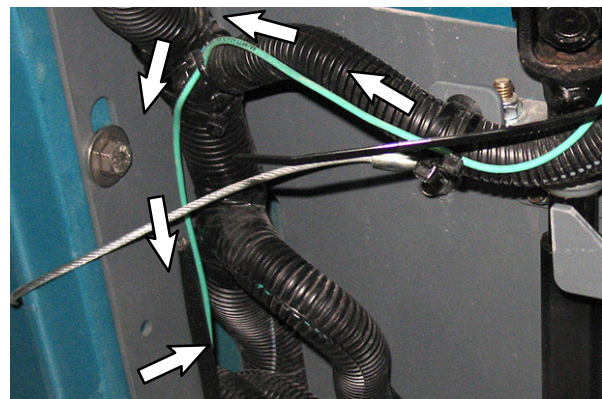


FIG. 6

6. Remove the two M8 hex screws/flat washers securing the front shroud to the steering channel. Set both hex screws and flat washers aside. (Fig. 7)

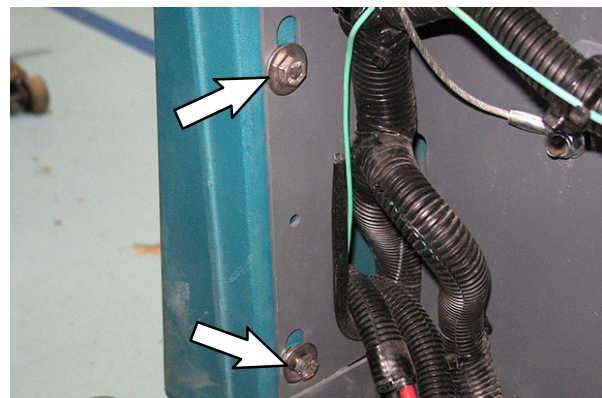


FIG. 7

7. Pull the front shroud out away from the steering channel and route the green wire (1) along the main wire harness and down through the holes in the lower operator station and frame of the machine to the underside of the machine. (Fig. 8/ Fig. 9)

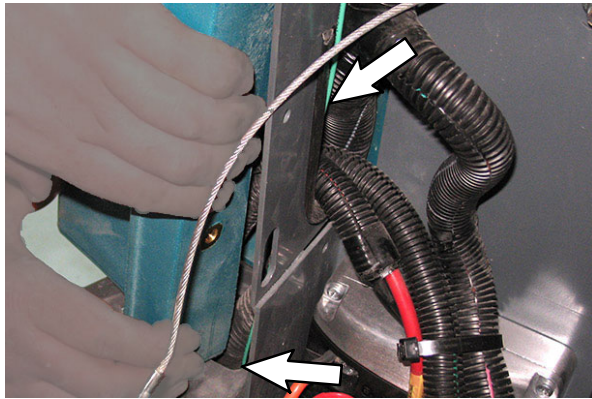


FIG. 8

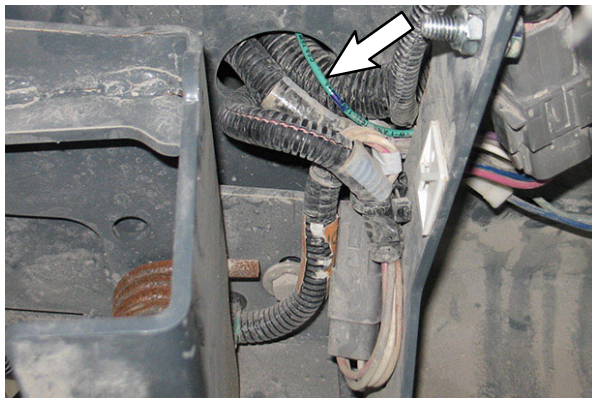


FIG. 9

8. Jack up the front end of the machine enough to access the drive wheel assembly/main wire harness routed underneath the machine to the drive wheel assembly/p-clamps securing main wire harness routed underneath the machine to the drive wheel assembly. Place jack stands under the machine and lower the machine onto the jack stands. See *MACHINE JACKING* in the *MAINTENANCE* section of the *OPERATOR MANUAL*.

FOR SAFETY: When servicing machine, block machine tires before jacking machine up. Use a hoist or jack that will support the weight of the machine. Jack machine up at designated locations only. Support machine with jack stands.

9. Pull the remainder of the green wire (1) through the holes in the lower operator station and frame of the machine. (Fig. 8/ Fig. 9)

10. Route the green wire (1) along the main wire harness and through the two cable clamps installed on the frame of the machine. (Fig. 10)

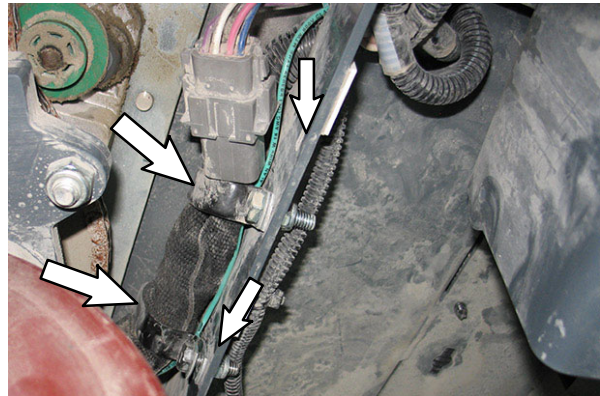


FIG. 10

11. Route the green wire (1) along the main wire harness and through the first p-clamp installed on the drive wheel assembly. Use a cable tie (5) to secure the green wire to the main wire harness and away from the bottom spacer plate. (Fig. 11/ Fig. 12)

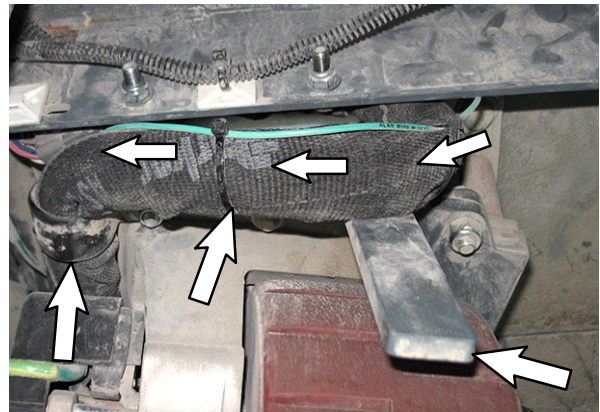


FIG. 11

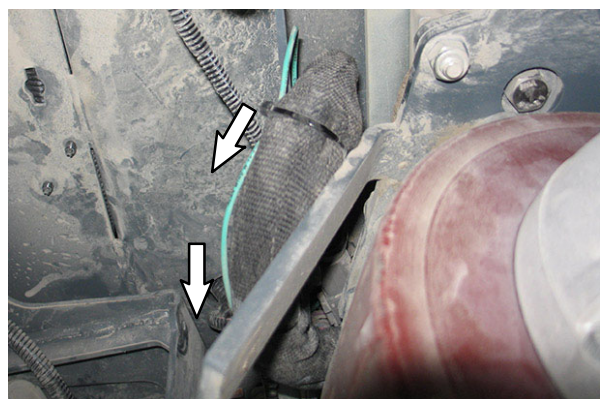


FIG. 12

12. Use a cable ties (5) to secure the green wire (1) to the main wire harness and away from the bottom spacer plate. (Fig. 11/ Fig. 12)

13. Route the green (1) along the main wire harness, through the two cable clamps on the drive wheel assembly, and down to the side of the drive wheel assembly where the green wire will be installed. (Fig. 13/ Fig. 14)

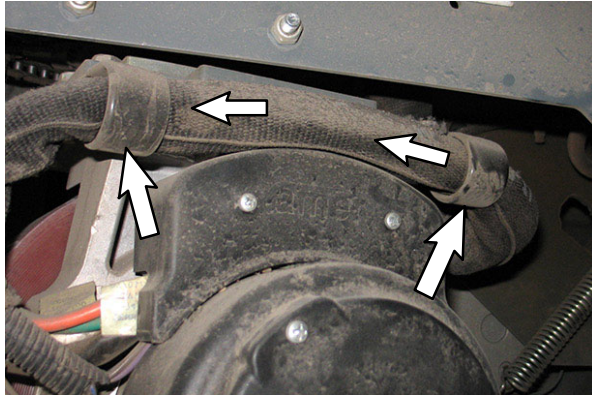


FIG. 13

14. Crimp a ring terminal (2) onto the green wire (1).

15. Use the M10 hex screw (4) to connect the green wire (1)/ring terminal (2) onto the drive wheel assembly. (Fig. 14)

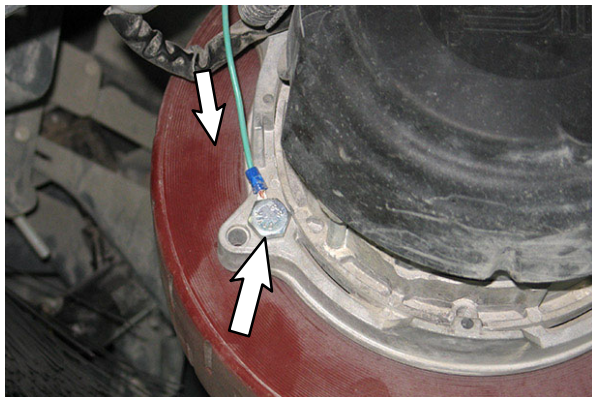


FIG. 14

16. Reconnect the battery cable to the machine.

17. Test the machine. Measure the resistance from both ends of the newly installed wire assembly (ring terminals/heads of screws securing the static wire assembly to the drive wheel and circuit breaker bracket) back to the SEMS M8 hex screw securing the static drag chain to the frame of the machine. (Fig. 3/ Fig. 14/ Fig. 15)

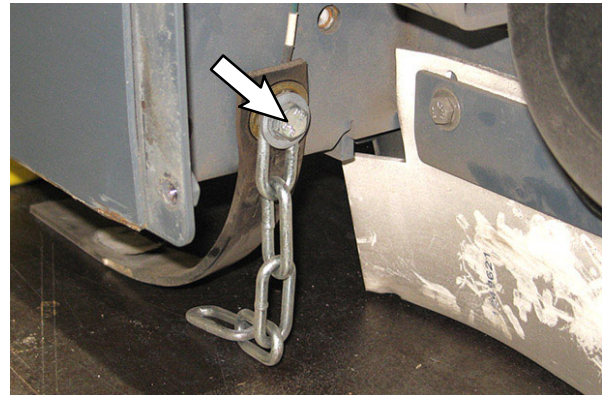


FIG. 15

18. Jack the machine up off the jack stands, remove the jack stands from under the machine, and lower the machine to the floor.
19. Reinstall the two M8 hex screws/flat washers to secure the front shroud to the steering channel.
20. Machines equipped with optional left side brush only: Reinstall the left side brush onto the machine.
21. Reinstall the brush stop plate onto the machine.
22. Reinstall the front access panel onto the steering channel.

Bill Of Materials For Parts Kit, Static Wire Conv, Drive [S16] - 9045098

Ref.	Tennant Part No.	Description	Qty.
1	C350141	Wire, Ele, 16ga Green, UL, Bulk	1
2	29856	Terminal, Ring, .38stud 16- 14ga, Ins	1
3	22794	Terminal, Ring, .31stud 16- 14ga	1
4	06960	Screw, Hex, M10 X 1.50 X 16, 8.8	1
5	763114	Tie, Cable, 11.3l, 2.75d Max	6

TENNANT COMPANY
P. O. Box 1452
Minneapolis, MN 55440-1452