



INSTRUCTION BULLETIN

No. 9021373
Machine: 800
Published: 01-2024
Rev. 00

NOTE: DO NOT DISCARD the Parts List from the Instruction Bulletin. Place the Parts List in the appropriate place in the machine manual for future reference. Retaining the Parts List will make it easier to reorder individual parts and will save the cost of ordering an entire kit.

NOTE: Numbers in parenthesis () are reference numbers for parts listed in Bill of Materials.

Installation instructions for **kit number 9021372**

Kit installation must be performed by TennantTrue[®] service or an authorized service provider.

SYNOPSIS:

This kit contains the parts needed to install the blue spotlight kit onto 800 sweepers.
Please follow step-by-step instructions.

SPECIAL TOOLS/CONSIDERATIONS: NONE

(Estimated time to complete: 2 hours)



PROTECT THE ENVIRONMENT

Please dispose of packaging materials, used machine components such as batteries and fluids in an environmentally safe way according to local waste disposal regulations.

Always remember to recycle.

PREPARATION:

FOR SAFETY: Before leaving or servicing machine, stop on level surface, turn off machine, and remove key.

1. Open the engine top door, side door, and the rear access door.

INSTALLATION: (Install Front Blue Spotlight - All Machines)

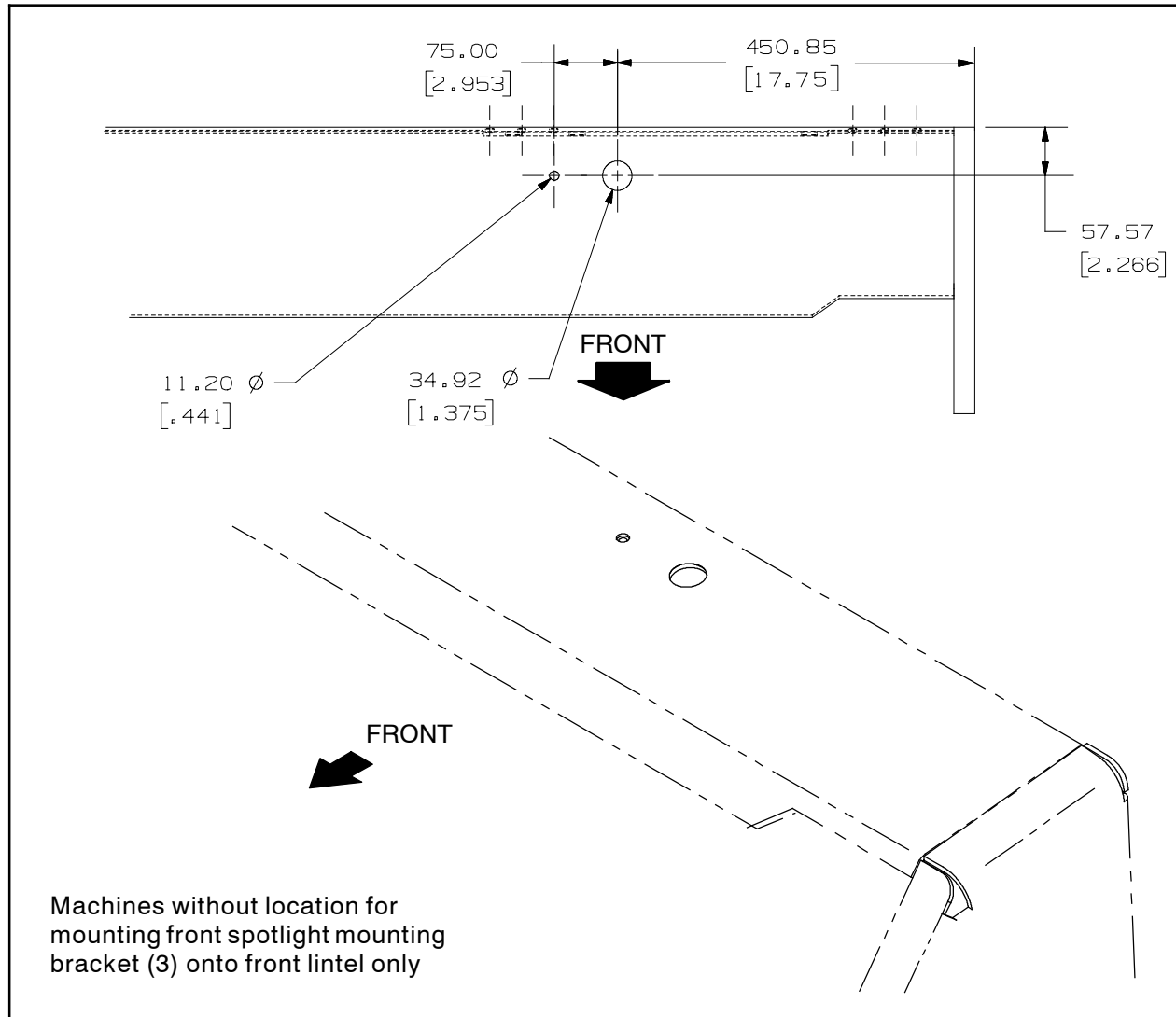


FIG. 1

1. If machine has plug fittings in the front lintel for installing the blue spotlight, remove and discard both plugs. (Fig. 1)

NOTE: If machine has location for installing front spotlight mounting bracket proceed to Step 5.

2. **Machines without location for routing blue spotlight harness (13) through front lintel only:** Measure and mark the location for the 1.375 in. (34.92 mm) hole to be drilled into the front lintel. (Fig. 1)
3. **Machines without location for mounting front spotlight mounting bracket (3) on front lintel only:** Measure and mark the location for the 0.441 in. (11.20 mm) hole to be drilled into the front lintel. (Fig. 1)

4. **Machines without location for routing blue spotlight harness (13) through front lintel only:** Drill a 1.375 in. (34.92 mm) hole into the front lintel. **Do Not** drill into parts/components located behind the front lintel. (Fig. 1)
5. **Machines without location for mounting front spotlight mounting bracket (3) to front lintel only:** Drill a 0.441 in. (10.20 mm) hole into the front lintel. **Do Not** drill into parts/components located behind the front lintel. (Fig. 1)
6. Use one SEMS M8 hex screw (4) to install the front spotlight mounting bracket (3) onto the front lintel. (Fig. 2)
7. Remove the hex nut included with the blue LED spotlight (1) from the light. (Fig. 2)

12. Insert the grommet (5) into the larger hole in the front lintel. (Fig. 2)

NOTE: Raise hopper if necessary. Some may find it unnecessary to raise hopper to install the blue spotlight harnesses, but others may find it easier to access the main wire harness and route blue spotlight harnesses around other nearby components with the hopper raised.

13. If raising the hopper to install this kit: Turn on the machine, raise the hopper, engage the hopper support, slowly lower the hopper until the hopper support is resting on the bar stop, turn off the machine, and remove the key.

 **WARNING: Lift arm pinch point. Stay clear of hopper lift arms.**

 **WARNING: Raised hopper may fall. Engage hopper support bar.**

FOR SAFETY: Before leaving or servicing machine, stop on level surface, turn off machine, and remove key.

14. Disconnect the battery cables from the battery.

 **WARNING: Always disconnect battery cables from machine before working on electrical components.**

15. Remove the access panel from the operator compartment. Set the access panel and all hardware aside. (Fig. 3)

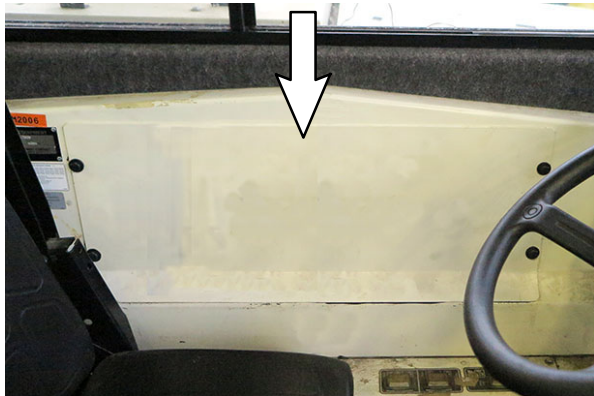


FIG. 3

16. Remove the hardware securing the cover panel to the operator compartment. Set the hardware aside. (Fig. 4)



FIG. 4

17. Carefully lift the cover panel from the operator compartment. **Do Not** break wire/harness connections when lifting the cover panel. (Fig. 4)

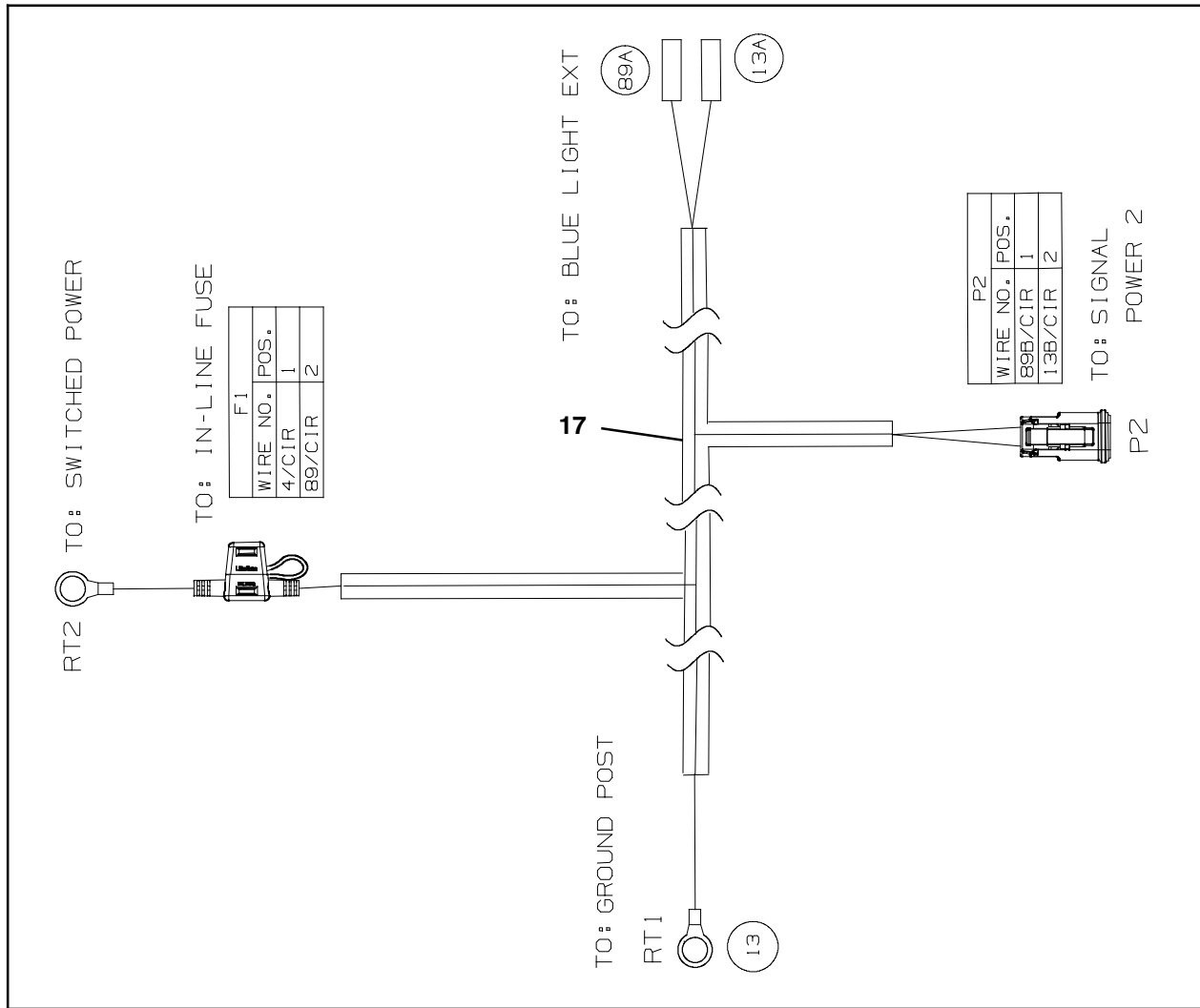


FIG. 5

18. Connect the blue spotlight harness (6) to the blue spotlight harness (17) P2. (Fig. 2/Fig. 5)
19. Slide the rubber ignition switch boot far enough from the ignition switch to access the terminals on the bottom of the ignition switch. (Fig. 6)

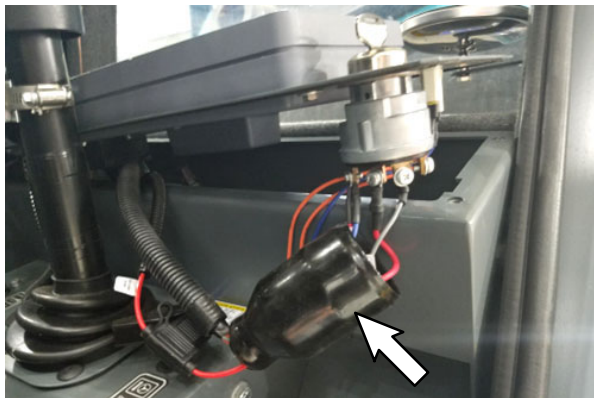


FIG. 6

20. Route the blue spotlight harness (17) RT2 lead through the opening previously covered by the cover panel and to the ignition switch. (Fig. 2)
21. Connect the blue spotlight harness (17) RT2 lead to the ignition switch AC terminal. (Fig. 5/Fig. 6)
22. Slide the rubber ignition switch boot back onto the ignition switch. (Fig. 6)
23. Reinstall the cover panel onto the operator compartment.

- 24.Route the blue spotlight harness (17) RT1 lead along the fire wall and down to the engine ground. (Fig. 7/Fig. 8/Fig. 5)

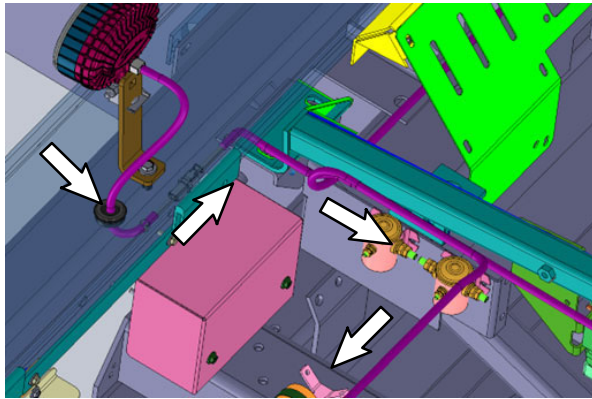


FIG. 7

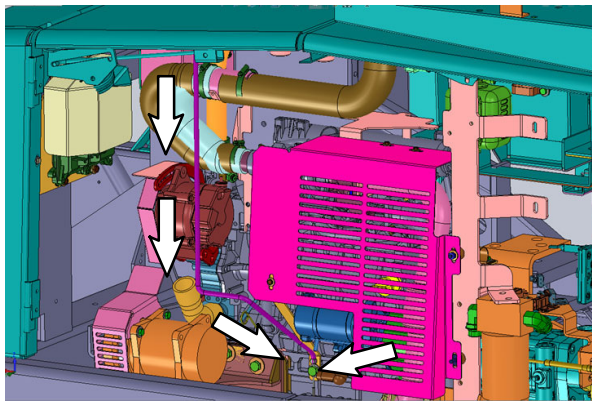


FIG. 8

- 25.Connect the blue spotlight harness (17) RT1 lead to the engine ground. (Fig. 8/Fig. 5)
- 26.Route the remainder of the blue spotlight harness (17) leads through the engine compartment, over the battery compartment, and to the rear of the machine near where the flashing light/strobe light is/would be installed on the engine cover panel.

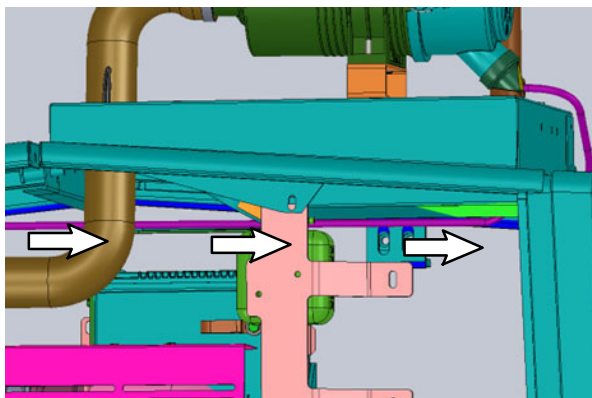


FIG. 9

- 27.If hopper was raised to install this kit:
Reconnect the battery cables to the battery.
- 28.If hopper was raised to install this kit: Turn on the machine, raise the hopper, disengage the hopper support,completely lower the hopper, turn off the machine, and remove the key.

WARNING: Lift arm pinch point. Stay clear of hopper lift arms.

WARNING: Raised hopper may fall. Engage hopper support bar.

- 29.If hopper was raised to install this kit:
Disconnect the battery cables from the battery.

- 30.Proceed to INSTALLATION: (Machines Without Low Flashing/Strobe Lights Only) if installing kit onto a machine not equipped with low flashing light/strobe light.

Proceed to INSTALLATION: (Machines With Low Flashing/Strobe Lights Only) if installing kit onto a machine equipped with low flashing light/strobe light.

INSTALLATION: (Machines Without Low Flashing/Strobe Lights Only)

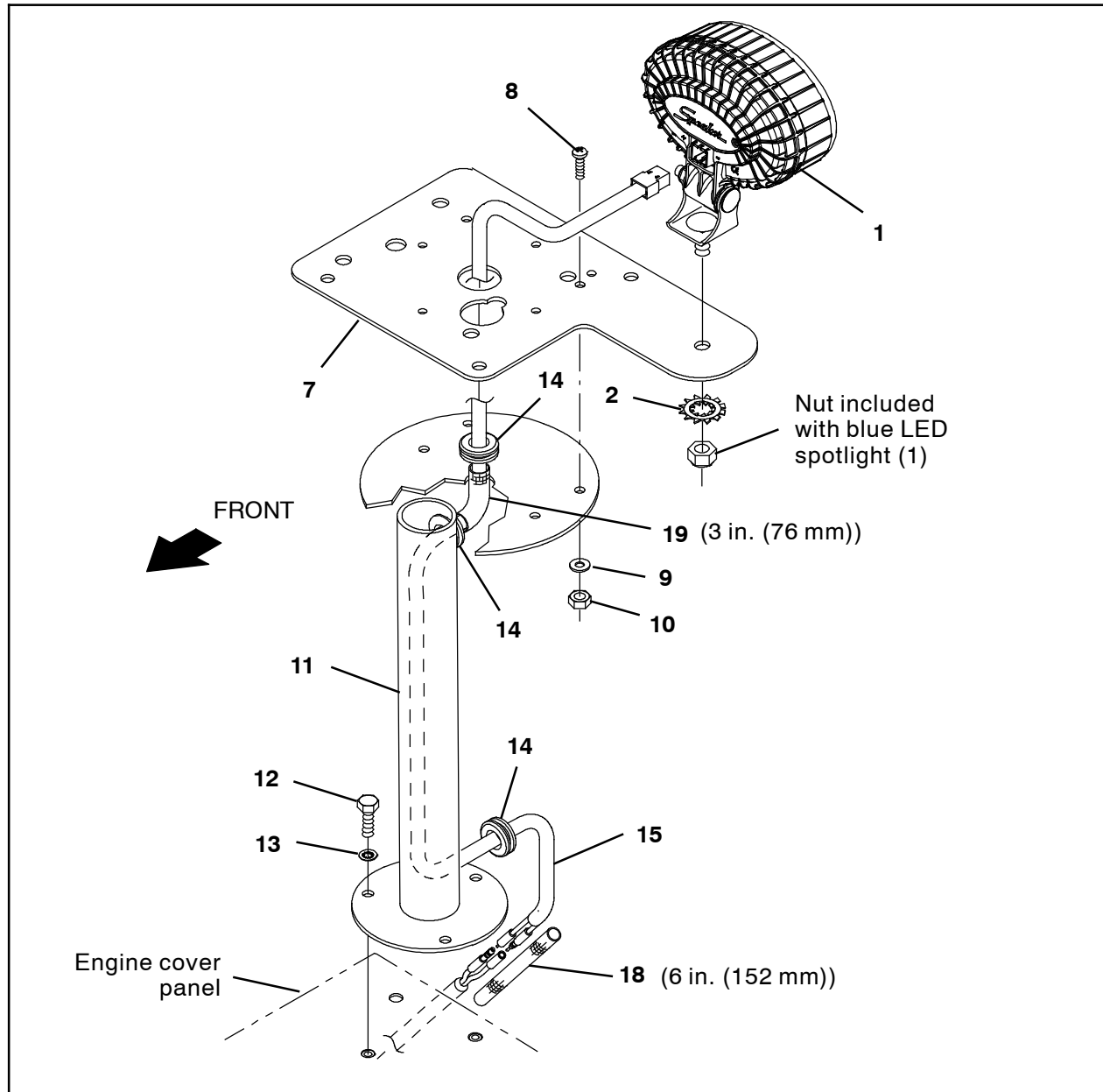


FIG. 10 - (Machines Without Low Flashing/Strobe Lights Only)

1. Remove the plugs from the engine cover panel. Discard the plugs.
2. Use four M5 pan screws (8), four flat washers (9), and four M5 hex screws (10) to install the rear spotlight bracket (7) onto the light pedestal (11). (Fig. 10)
3. Remove the hex nut included with the blue LED spotlight (1) from the light. (Fig. 10)
4. Use the hex nut removed from the blue LED spotlight (1) in the previous step and a lock washer (2) to install the blue LED spotlight onto the rear spotlight bracket (7). (Fig. 10)
5. Slide a grommet (14) onto the end of the blue spotlight harness (15) to be connected to the blue spotlight harness (17). (Fig. 10)
6. Route the end of the blue spotlight harness (15) to be connected to the blue spotlight harness (17) down through the rear spotlight bracket (7). (Fig. 10)

7. Slide another additional grommet (14) onto the end of the blue spotlight harness (15) to be connected to the blue spotlight harness (17). (Fig. 10)
8. Route the end of the blue spotlight harness (15) to be connected to the blue spotlight harness (17) through the top hole in the light pedestal (11) and down through the bottom hole (7). (Fig. 10/Fig. 11)
9. Slide another additional grommet (14) onto the end of the blue spotlight harness (15) to be connected to the blue spotlight harness (17). (Fig. 10)
10. Insert the grommets (14) into the holes in the light pedestal (11). (Fig. 10)
11. Connect the blue spotlight harness (15) to the blue LED spotlight (1). (Fig. 10/Fig. 11)
12. Use three M6 hex nuts (12) and three lock washers (13) to install the light pedestal (11)/blue spot light (1) onto the engine cover panel. (Fig. 10)
13. Install the (3 in. (76 mm)) vinyl sleeve (19) onto the area of the blue spotlight harness (15) between the two grommets (14) at the top light pedestal (11). (Fig. 10)
14. Use black electrical tape to secure the (3 in. (76 mm)) vinyl sleeve (19) onto the blue spotlight harness (15). (Fig. 10)
15. Route the end of the blue spotlight harness (15) through the hole in the engine cover corner panel. (Fig. 10)
16. Install the (6 in. (152 mm)) vinyl sleeve (18) onto the area of the blue spotlight harness (15) between the grommet (14) at the bottom of the light pedestal (11) and the grommet in the engine cover corner panel. (Fig. 10)
17. Use black electrical tape to secure the (6 in. (152 mm)) vinyl sleeve (18) onto the blue spotlight harness (15). (Fig. 10)
18. Connect the blue spotlight harness (17) BLUE LIGHT EXT leads to the blue spotlight harness (15). (Fig. 10/Fig. 11)
19. Reinstall the access panel into the operator compartment.
20. Reconnect the battery cables to the battery.
21. Test the machine. Start the machine. Both blue lights should illuminate immediately when the key is turned to start the machine.
22. Adjust both blue LED spotlights (1) to customer preference.

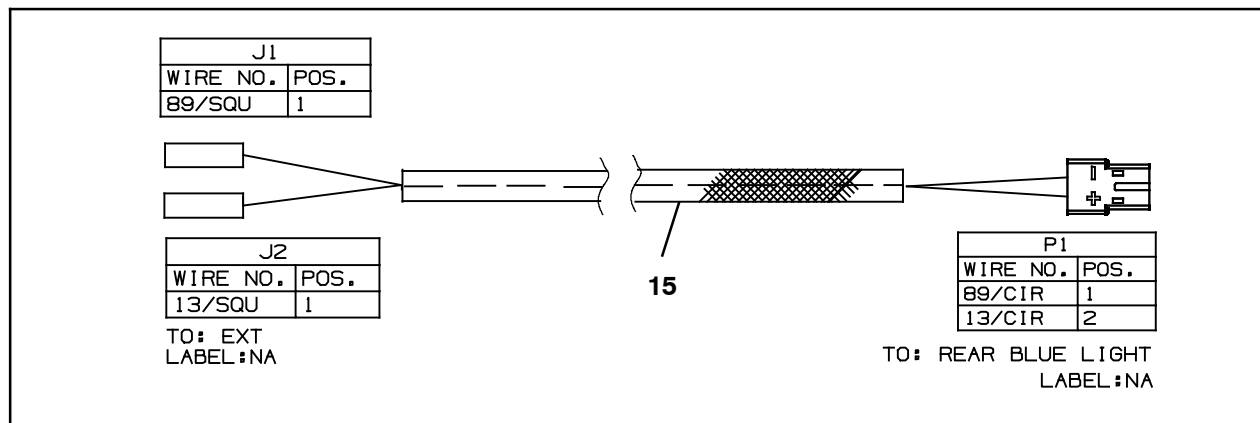


FIG. 11

INSTALLATION: (Machines With Low Flashing/Strobe Lights Only)

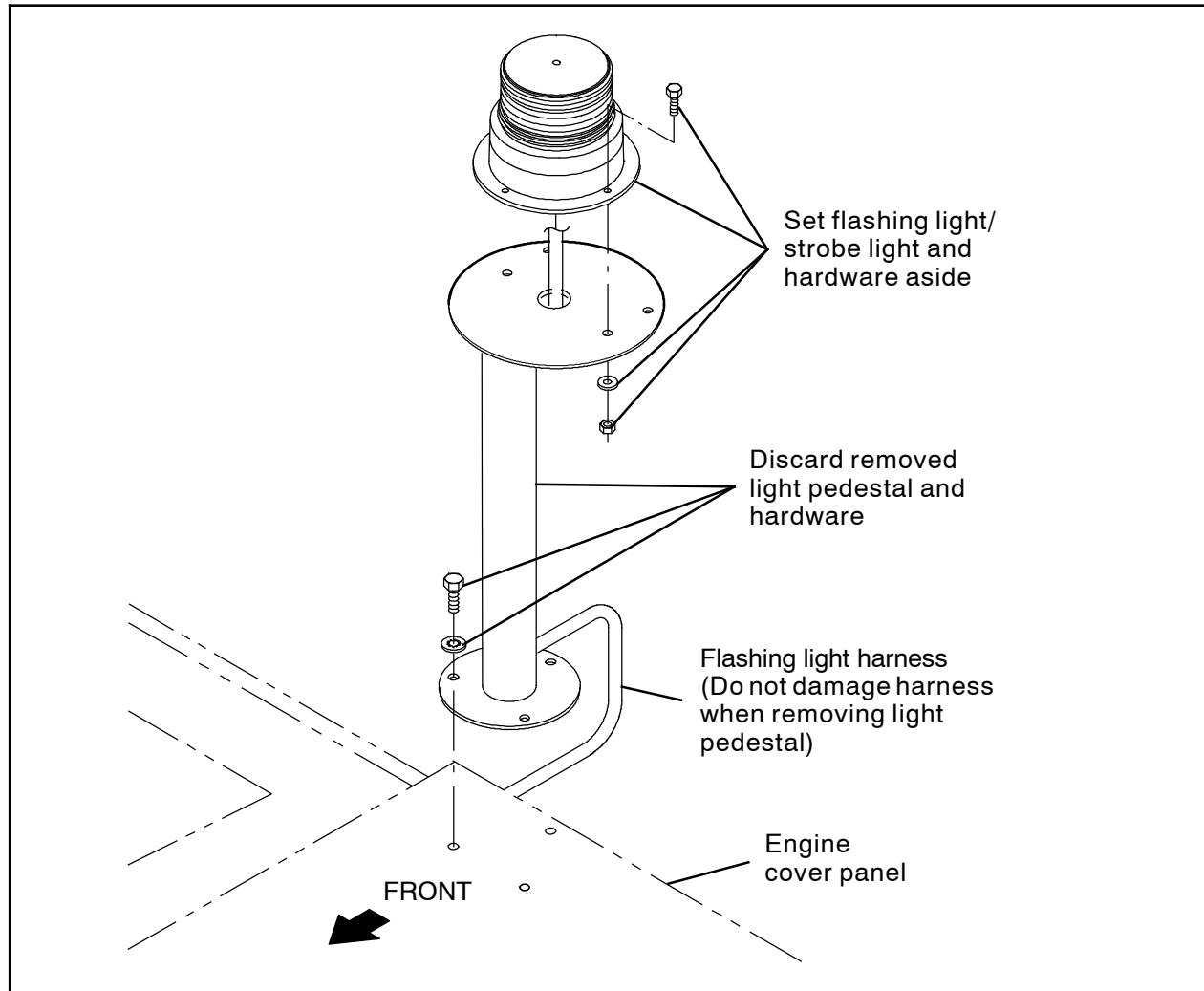


FIG. 12 - (Machines With Low Flashing/Strobe Lights Only)

1. Remove the hardware securing the flashing light/strobe light to the light pedestal. Set the hardware aside. (Fig. 11)
2. Disconnect the flashing light harness from the flashing light/strobe light. Set the flashing light/strobe light aside. (Fig. 11)
3. Carefully remove the light pedestal from the engine cover panel. Do Not damage the flashing light harness when removing the light pedestal. Discard the light pedestal and hardware. (Fig. 11)
4. Disconnect the flashing light harness from the main wire harness. Set the flashing light harness aside. (Fig. 11)

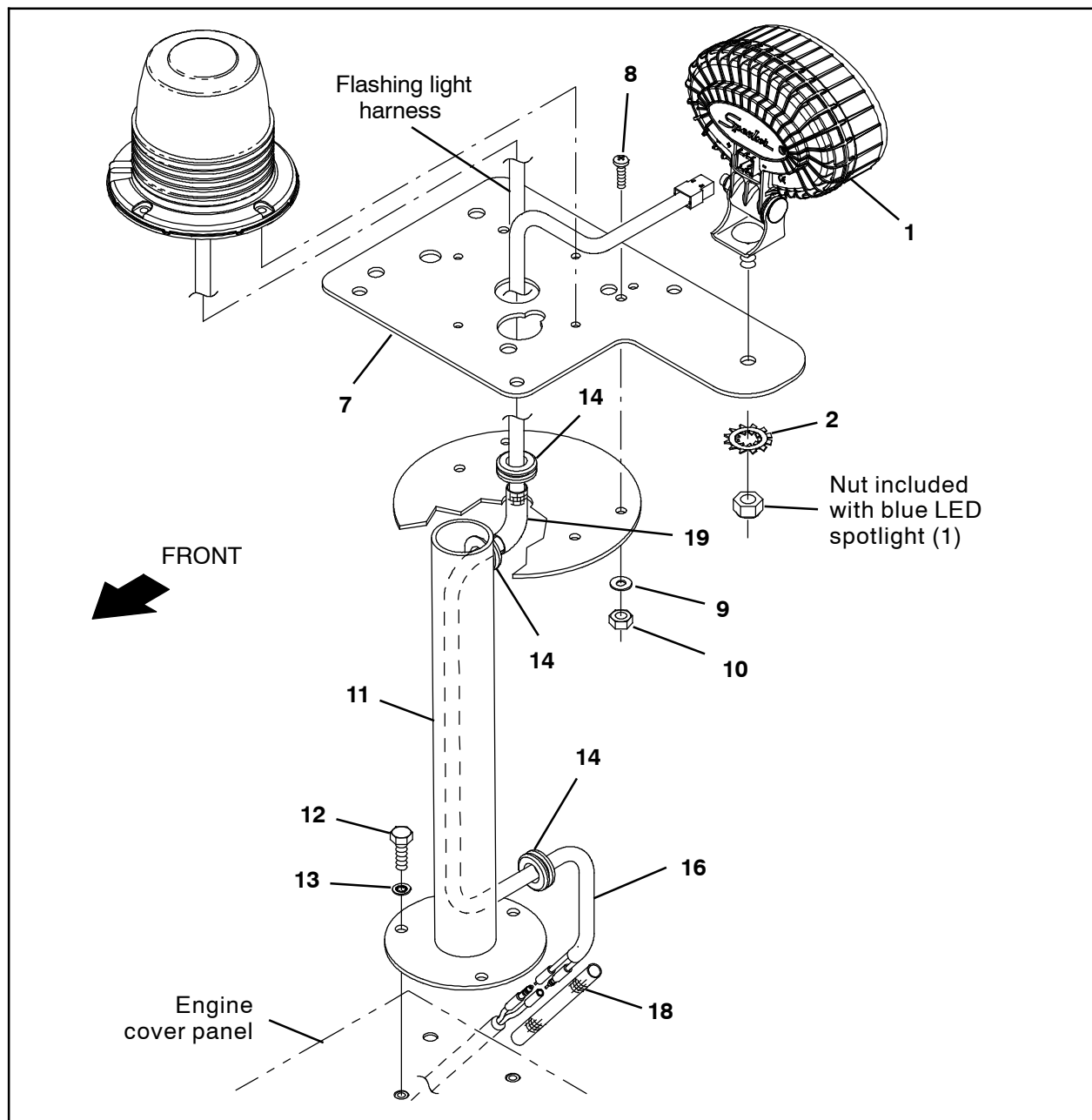


FIG. 13

5. Use four M5 pan screws (8), four flat washers (9), and four M5 hex screws (10) to install the rear spotlight bracket (7) onto the light pedestal (11). (Fig. 13)
6. Slide a grommet (14) onto the flashing light harness and blue spotlight harness (16) ends to be routed out through the bottom of the light pedestal (11). (Fig. 13)
7. Route the flashing light harness and blue spotlight harness (16) through the rear spotlight bracket (7). (Fig. 13)
8. Slide another grommet (14) onto the flashing light harness and blue spotlight harness (16). (Fig. 13)
9. Route the flashing light harness and blue spotlight harness (16) through the top hole in the light pedestal (11) and down through the bottom hole. (Fig. 13)
10. Slide another grommet (14) onto the flashing light harness and blue spotlight harness (16). (Fig. 13)

11. Install the flashing light/strobe light onto the rear spotlight bracket (7). (Fig. 13)
12. Connect the flashing light harness to the flashing light/strobe light. (Fig. 13)
13. Remove the hex nut included with the blue LED spotlight (1) from the light. (Fig. 13)
14. Use the hex nut removed from the blue LED spotlight (1) in the previous step and a lock washer (2) to install the blue LED spotlight onto the rear spotlight bracket (7). (Fig. 13)
15. Connect the blue spotlight harness (16) to the blue LED spotlight (1). (Fig. 13/Fig. 14)
16. Insert the grommets (14) into the holes in the light pedestal (11)/rear spotlight bracket (7). (Fig. 13)
17. Use three M6 hex nuts (12) and three lock washers (13) to install the light pedestal (11)/blue spot light (1) onto the engine cover panel. (Fig. 13)
18. Install the (3 in. (76 mm)) vinyl sleeve (19) onto the exposed area of the blue spotlight harness (16) between the two grommets (14) at the top light pedestal (11). (Fig. 13)
19. Use black electrical tape to secure the (3 in. (76 mm)) vinyl sleeve (19) onto the blue spotlight harness (16). (Fig. 13)
20. Route the backup light/alarm harness and blue spotlight harness (16) through the hole in the engine cover corner panel. (Fig. 13)
21. Install the (6 in. (152 mm)) vinyl sleeve (18) onto the exposed area of the blue spotlight harness (16) between the grommet (14) at the bottom of the light pedestal (11) and the grommet in the engine cover corner panel. (Fig. 13)
22. Use black electrical tape to secure the (6 in. (152 mm)) vinyl sleeve (18) onto the blue spotlight harness (16). (Fig. 13)
23. Reconnect the flashing light harness to the main wire harness.
24. Connect the blue spotlight harness (17) BLUE LIGHT EXT leads to the blue spotlight harness (16). (Fig. 13/Fig. 14)
25. Reinstall the access panel into the operator compartment.
26. Reconnect the battery cables to the battery.
27. Test the machine. Start the machine. Both blue lights should illuminate immediately when the key is turned to start the machine.
28. Adjust both blue LED spotlights (1) to customer preference.

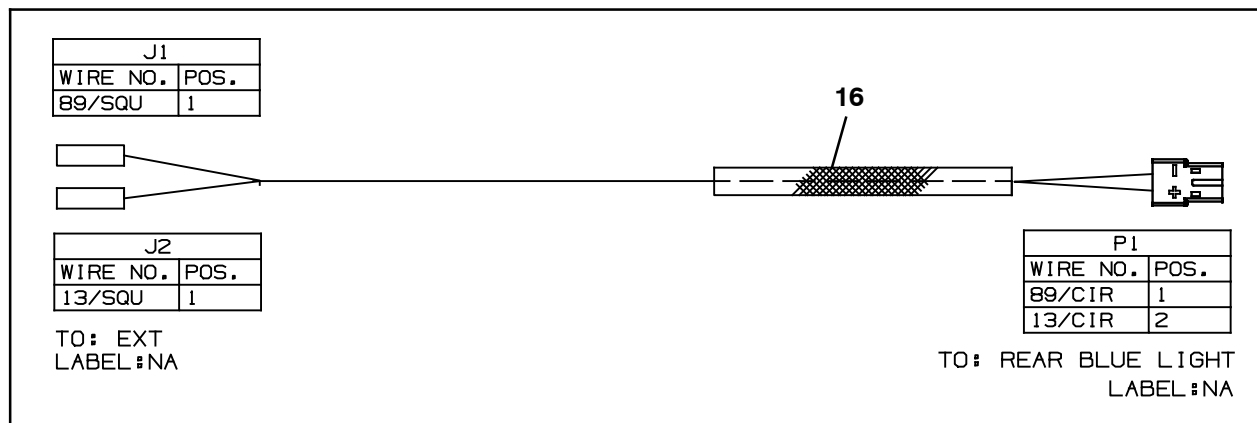


FIG. 14

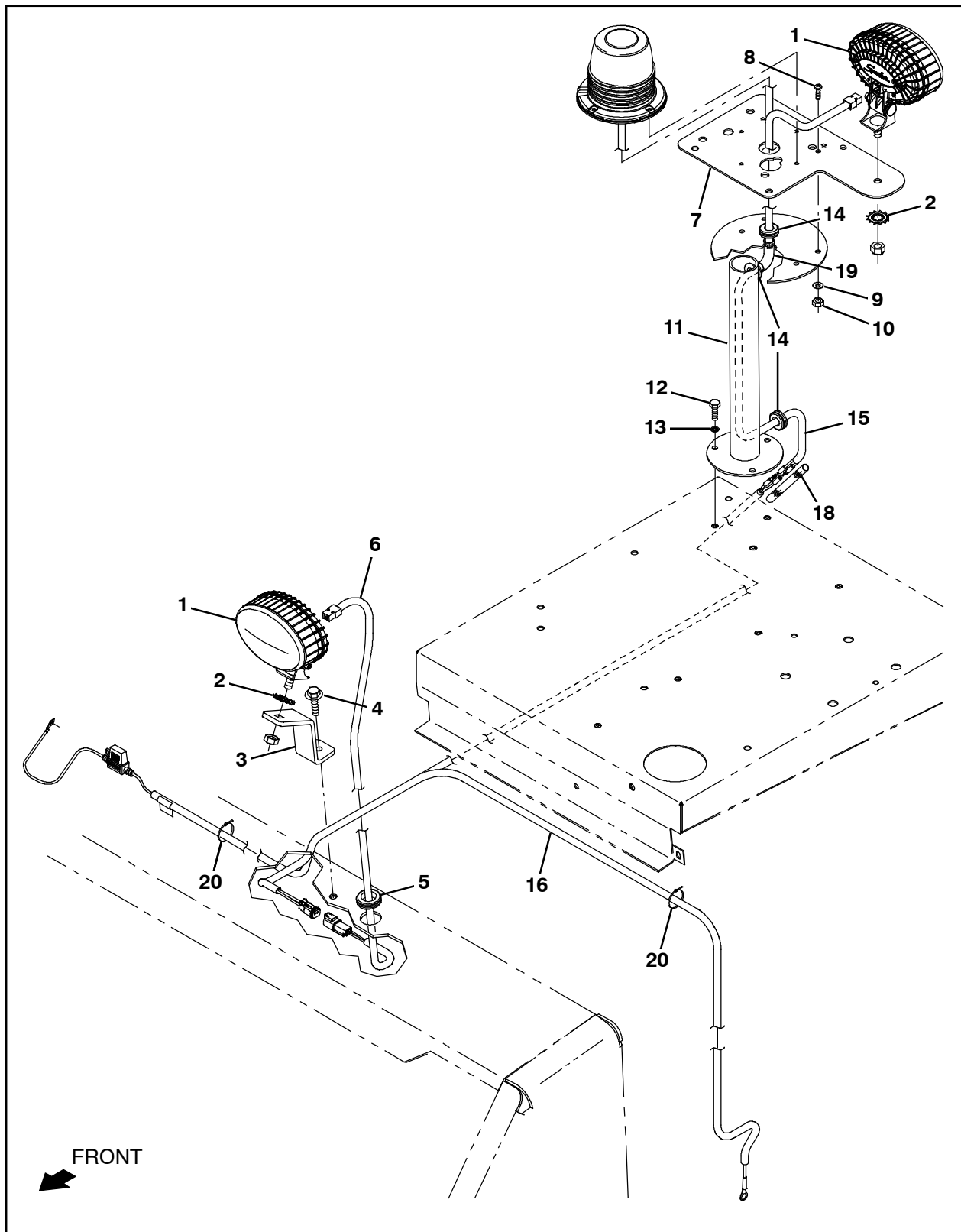


FIG. 15

Bill Of Materials For Spotlight Kit, Blue, CI [800] - 9021372

Ref.	Tennant Part No.	Description	Qty.
1	1240687	Light, Spot, Blue, LED	2
2	41143	Washer, Lock, Int- Ext, 0.50	2
3	1076786	Brkt, Blu Spotlight, Fr, Frame Mtg	1
4	1037354	Screw, Hex, M8 X 1.25 X 30, 9.8, SEMS	1
5	10632- 1	Grommet, Rbr, 1.06ID, F/1.4H, .19 Matl	1
6	1077006	Harness, Blu Spotlight [24" Light Ext]	1
7	1076789	Brkt, Blu Spotlight, Rr, Frame Mtg	1
8	24196	Screw, Pan, Phl, M5 X 0.80 X 20, SS	4
9	19066	Washer, Flat, 0.25B 0.56D .05, PL, 10	4
10	09739	Nut, Hex, Lock, M5 X 0.80, NL, SS	4
11	31954	Pedestal Wldt, Light	1
12	06943	Screw, Hex, M6 X 1.00 X 20, 8.8	3
13	32982	Washer, Lock, Int, 0.25	3
14	10632- 9	Grommet, Rbr, 0.63ID, F/0.8H, .12 Matl	3
15	1077010	Harness, Blu Spotlight [24" Ext Coln]	1
16	1077007	Harness, Blu Spotlight [24" Light Coln]	1
17	1077005	Harness, Blu Spotlight [Pwr Hub]	1
18	C080125	Sleeve, Vyl, Flex, .33ID, Bulk (6 in. (152 mm))	1
19	C080125	Sleeve, Vyl, Flex, .33ID, Bulk (3 in. (76 mm))	1
20	763114	Tie, Cable, 11.3L, 2.75D Max	10

TENNANT COMPANY
10400 Clean Street
Eden Prairie, MN 55344- 2650