



INSTRUCTION BULLETIN

No. 9018433
Machine: ATLV 4300
Published: 11-2019
Rev. 00

NOTE: DO NOT DISCARD the Parts List from the Instruction Bulletin. Place the Parts List in the appropriate place in the machine manual for future reference. Retaining the Parts List will make it easier to reorder individual parts and will save the cost of ordering an entire kit.

NOTE: Numbers in parenthesis () are reference numbers for parts listed in Bill of Materials.

Installation instructions for **kit number 9018431**

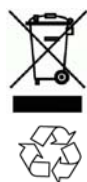
Kit installation must be performed by TennantTrue[®] service or an authorized service provider.

SYNOPSIS:

This kit contains the parts needed to replace the exhaust assembly on ATLV 4300 machines.
Please follow step-by-step instructions.

SPECIAL TOOLS / CONSIDERATIONS: NONE

(Estimated time to complete: 1.5 hours)



PROTECT THE ENVIRONMENT

Please dispose of packaging materials, used machine components such as batteries and fluids in an environmentally safe way according to local waste disposal regulations.

Always remember to recycle.

PREPARATION:

FOR SAFETY: Before leaving or servicing machine, stop on level surface, turn off machine, and remove key.

1. If machine is equipped with optional dust control tank, empty the water from the dust control tank.
2. Empty vacuum bag located inside the hopper.
3. Tilt the hopper completely back.
4. Remove/disconnect the portion of the vacuum wand/hose near the engine compartment as necessary for better access to the area of the engine where the exhaust system is located.

5. Open the engine compartment cover.
6. Place a chock in front of each front tire of the machine.
7. Jack up the rear end of the machine approximately 9 in. (230 mm), place jack stands under the machine, and lower the machine onto the jack stands. Refer to **MACHINE JACKING** in the **MAINTENANCE** section of the Operator Manual for additional instructions and safety information.

FOR SAFETY: When servicing machine, block machine tires before jacking machine up. Use a hoist or jack that will support the weight of the machine. Jack machine up at designated locations only. Support machine with jack stands.

INSTALLATION:

1. Loosen both muffler clamps securing the tailpipe/muffler/exhaust assembly to the machine.
2. Remove the existing exhaust assembly (older machines, exhaust assembly and exhaust shield) from the machine. Discard the removed exhaust assembly components and all hardware used to secure these items to the machine. (Fig. 1/Fig. 2)

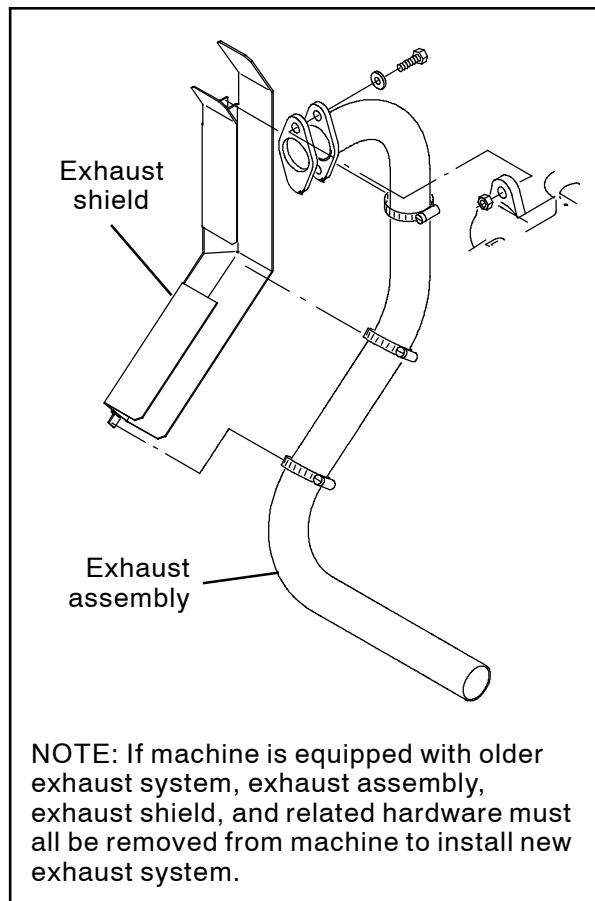


FIG. 1

3. Clean any remaining residue from the removed manifold gasket from the engine. (Fig. 2)
4. Use two M10 hex screws (12), two flat washers (11), and two M10 hex nuts (13) to install the new exhaust assembly (1) and exhaust manifold gasket (10) onto the engine. (Fig. 2)
5. Use one M8 hex screw (7), two flat washers (6), and one M8 hex nut (5) to install the sleeve (8) and rubber isolator (9) onto the front exhaust bracket (2). (Fig. 2)
6. Insert the hook on the exhaust assembly (1) into the bottom hole in the rubber isolator (9). (Fig. 2)
7. Connect the exhaust assembly (1) to the muffler. (Fig. 2)
8. Use two M10 hex screws (4) and two flat washers (3) to install the front exhaust bracket (2) onto the machine. (Fig. 2)
9. Tighten both previously loosened muffler clamps to secure the tailpipe/muffler/exhaust assembly to the machine. (Fig. 2)
10. Start the machine. Observe the new exhaust assembly connections to the engine and muffler for leaks. Turn off the machine. Repair all exhaust leaks.
11. Slightly raise the machine from the jack stands, remove the jack stands from under the machine, and lower the machine.
12. Reinstall all items removed to allow easier access to the engine compartment/exhaust system.

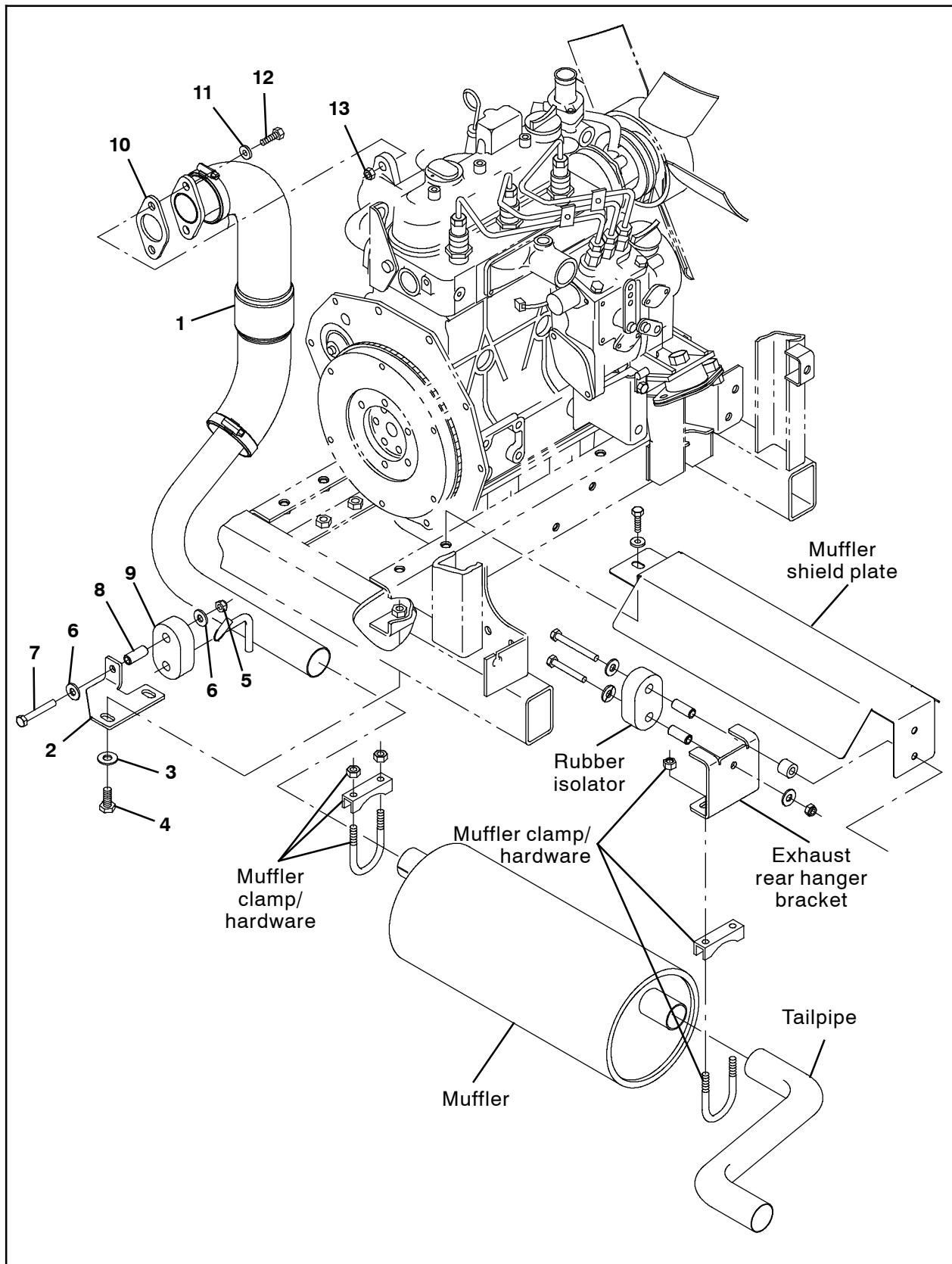


FIG. 2

Bill Of Materials For Kit, Aftmkt Repair, Standard Exhaust - 9018431

Ref.	Tennant Part No.	Description	Qty.
1	1076366	Exhaust Assembly, Standard	1
2	1076315	Bracket, Exhaust, Front	1
3	32492	Washer, Flat, 0.38, Std	2
4	39283	Screw, Hex, M10X1.50X25, 8.8	2
5	08709	Nut, Hex, Lock, M8 X 1.25, NL	1
6	32491	Washer, Flat, 0.31, Std	2
7	222504	Screw, Hex, M8 X 1.25 X 55, SS	1
8	222497	Sleeve, P/M, 0.32B 0.50D 1.3L [430SS]	1
9	1013031	Isolator, Rbr	1
10	368099	VR, Gasket, Manifold, Exhaust [KU]	1
11	32485	Washer, Flat, 0.38, SAE	4
12	33612	Screw, Hex, M10 X 1.25 X 35, 8.8	2
13	66185	Nut, Hex, Std, M10 X 1.25	2

TENNANT COMPANY
P. O. Box 1452
Minneapolis, MN 55440-1452