



# Controller Replacement Kit

Models: Tennant R14 / Nobles Strive Rider



This kit includes the necessary parts to replace a defective controller board on a R14/Strive Rider.

## INSTALLATION INSTRUCTIONS:

**Installation Time: 1.5 Hours**

**TOOLS REQUIRED:** Torque Wrench, 8mm, 10mm and 13mm sockets, Wire Cutters, Wire Terminal Crimpers.

### PREPARATION

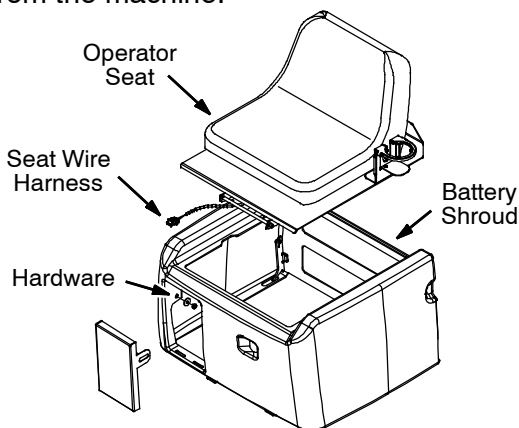
1. Park the machine on a level surface.
2. Turn the machine off and remove the key.

**FOR SAFETY: Before servicing machine, stop on level surface, set parking brake, turn off machine, and remove key.**

3. Disconnect the black (-) battery cable from battery pack.

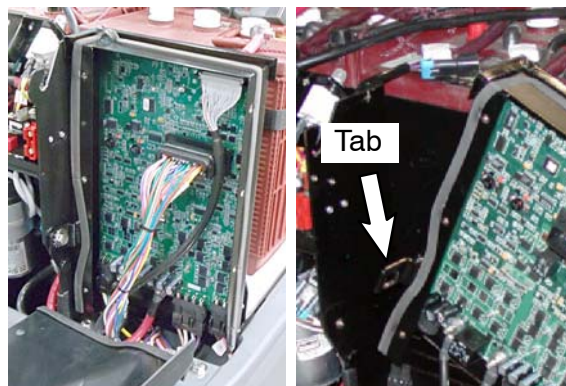
**FOR SAFETY: When servicing machine, disconnect battery connection before working on machine.**

4. Disconnect the wire harness from the operator seat switch and remove the seat from the machine.
5. Remove the battery compartment shroud from the machine.



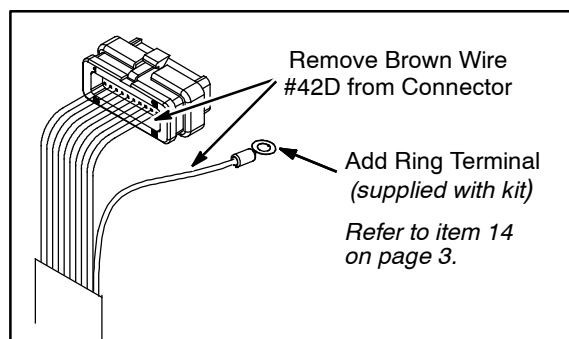
### INSTALLATION

1. Remove the electrical panel cover from the circuit board. Six bolts secure panel in place.
2. Disconnect the wire harness connectors and the red (+) and black (-) cables from old board. Remove the screw that mounts the circuit board panel tab to machine and dispose old board.



3. For models manufactured before serial number 10389602 perform this step:

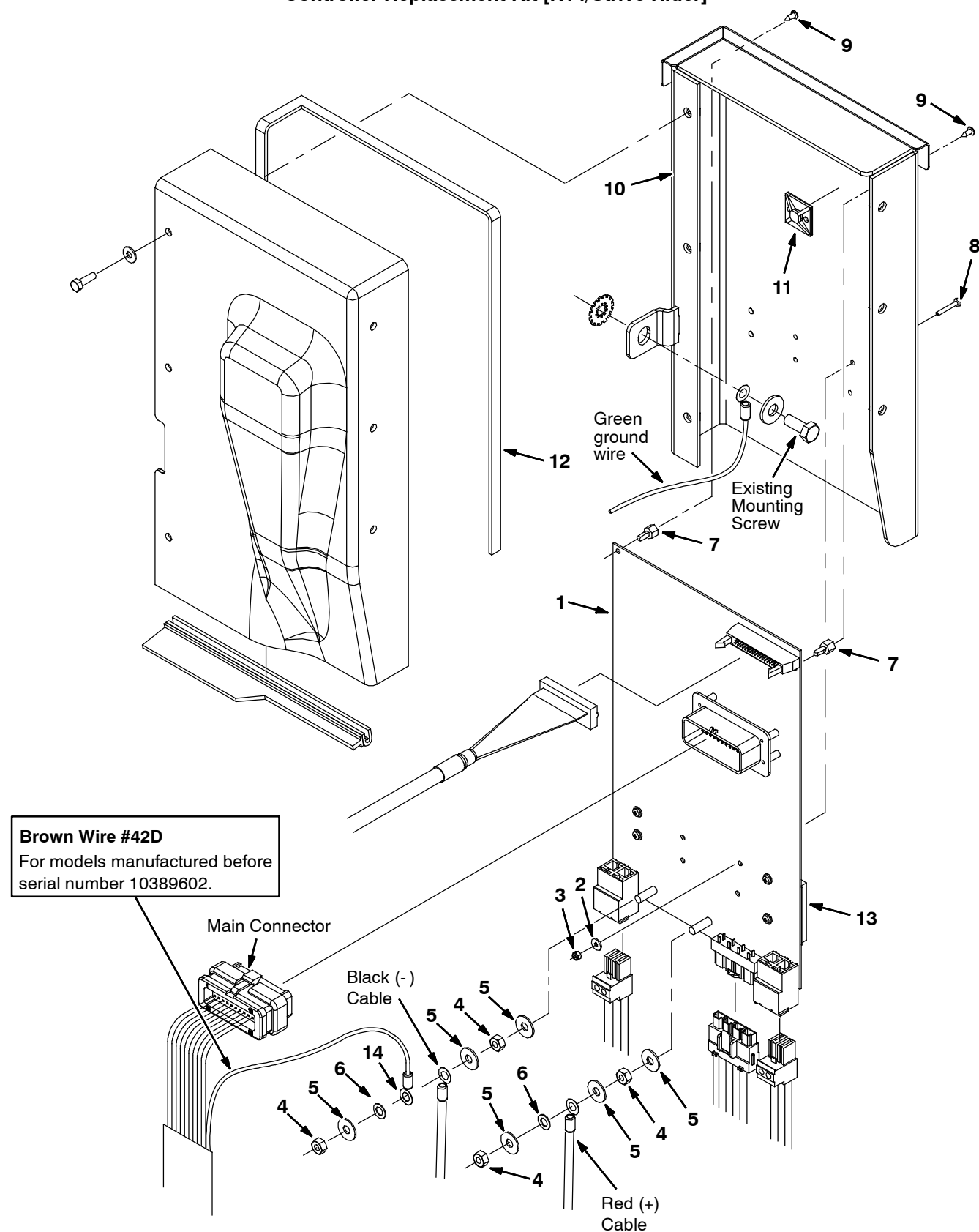
If the main connector, shown below, is equipped with brown wire #42D (position #35), remove the wire from connector and install ring terminal supplied in kit as shown.



4. Install new circuit board (Refer to page 2).  
**ATTENTION:** When handling the new circuit board use the anti-static ground strap, supplied with kit, to prevent the risk of damaging circuit board.
5. Reconnect the Red (+) and black (-) cables to the new circuit board terminals. Torque nuts to 33 lb-in / 3.8 Nm.
6. Replace electrical panel cover.
7. Replace the battery compartment shroud.
8. Replace the operator seat and reconnect the seat switch wire harness.
9. Reconnect battery cable to battery pack.

# Controller Replacement Kit INSTALLATION INSTRUCTIONS - Continued

## Controller Replacement Kit [R14/Strive Rider]



## Controller Replacement Kit INSTALLATION INSTRUCTIONS - Continued

### Controller Replacement Kit [R14/Strive Rider] Parts List

Ref.	Tenant Part No.	Description	Qty.
▽ 1	9012714	Controller Kit, Replmt	1
▲ 2	1019218	Washer, Flat, 0.14B 0.31D, Nyl	4
▲ 3	579211	Nut, Hex, Lock, M3 X .5, SS	4
▲ 4	07785	Nut, Hex, Std, M6 X 1.00, SS	4
▲ 5	1057560	Washer, Flat, M6 .4B X 16D X 1 PL SS	6
▲ 6	32982	Washer, Lock, Int, 0.25	2
▲ 7	1016825	Support, Circuitboard	2
▲ 8	06922	Screw, Pan, M3 X 0.5 X 20, 4.8	4
▲ 9	3701.6	Screw, Pan, #06-32 X 0.38, Phl SS Shtmtl	2
▲10	1017754	Panel Wldt, Cntrl	1
▲11	55248	Mount, Cable Tie	1
▲12	1020284	Seal, Strip, Adh (pre-installed)	1
▲13	1016816	Pad, Thermal, Heat Sink (pre-installed)	1
▲14	130135	Terminal, Ring, 1/4"	1
▲N/S	27964	Strap, Static, Ground, Disposable	1

▽ = Kit    ▲ = Included in kit    N/S = Not Shown