



# INSTRUCTION BULLETIN

No. 9010160  
Machine: T16  
Published: 09-2019  
Rev. 01

**NOTE: DO NOT DISCARD the Parts List from the Instruction Bulletin. Place the Parts List in the appropriate place in the machine manual for future reference. Retaining the Parts List will make it easier to reorder individual parts and will save the cost of ordering an entire kit.**

*NOTE: Numbers in parenthesis ( ) are reference numbers for parts listed in Bill of Materials.*

Installation instructions for **kit number 9010158 - Replace drive wheel assembly / 9010159 - Replace drive wheel steering control assembly**

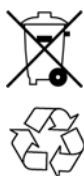
Kit installation must be performed by TennantTrue<sup>®</sup> service or an authorized service provider.

## SYNOPSIS:

This kit contains the parts needed to replace either the drive wheel assembly or the drive wheel steering control assembly on T16 scrubbers.  
Please follow step-by-step instructions.

## SPECIAL TOOLS / CONSIDERATIONS: NONE

(Estimated time to complete: 2 hours)



### PROTECT THE ENVIRONMENT

Please dispose of packaging materials, old machine components, and hazardous fluids in an environmentally safe manner according to local waste disposal regulations.

Always remember to recycle.

## PREPARATION: (Both Kits)

1. Park the machine on a clean level surface, turn off the machine, and remove the key.

**FOR SAFETY: Before leaving or servicing machine, stop on level surface, turn off machine, and remove key.**

2. Disconnect the battery cables from the batteries.



**WARNING: Always disconnect battery cables from machine before working on electrical components.**

3. Block both rear wheels, jack up the front end of the machine high enough to remove the drive wheel assembly from the machine, and place jack stands under the front end of the machine. Lower the machine onto the jack stands.

**FOR SAFETY: When servicing machine, block machine tires before jacking machine up. Use a hoist or jack that will support the weight of the machine. Jack machine up at designated locations only. Support machine with jack stands.**

## INSTALLATION (Kit 9010158):

1. Remove the cable clamps from the drive wheel assembly. Set cable clamps and hardware aside. (Fig. 1)

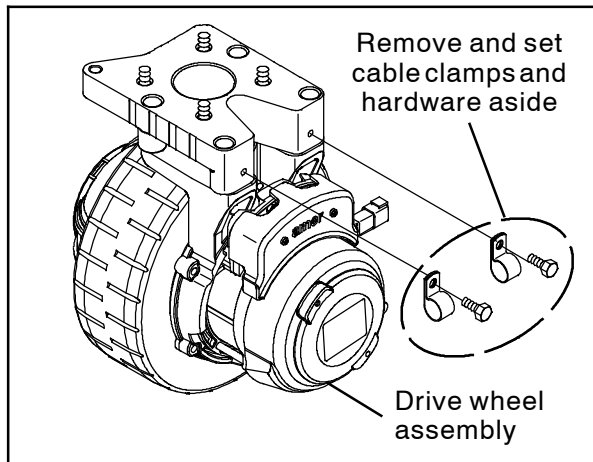


FIG. 1

2. Disconnect the main wire harness from the drive wheel assembly.
3. Completely loosen the hardware securing the drive wheel assembly to the machine and remove the drive wheel assembly from the machine. (Fig. 2)

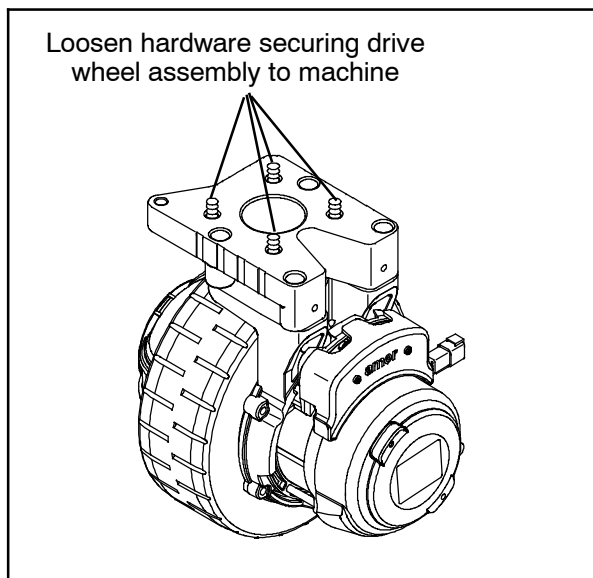


FIG. 2

4. Remove the four socket head screws securing the aluminum spacer to the drive wheel assembly. (Fig. 3)

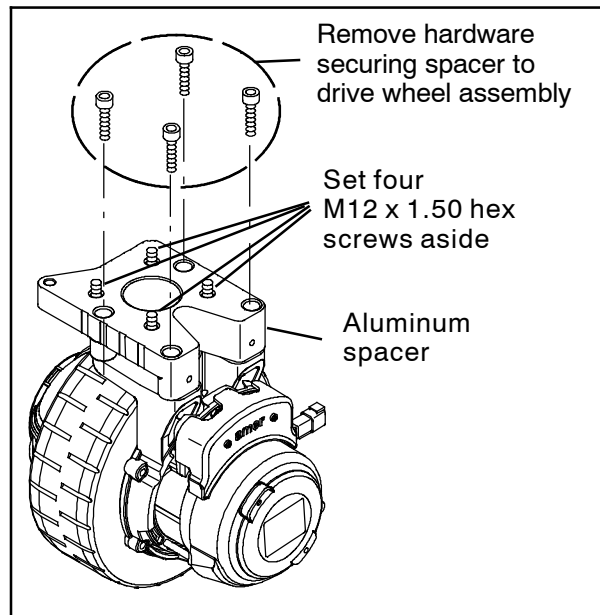


FIG. 3

5. Remove the aluminum spacer from the drive wheel assembly and remove the four hex screws and flat washers from the aluminum spacer. Discard the aluminum spacer and the rest of the drive wheel assembly. Set the four hex screws and flat washers aside. (Fig. 3)

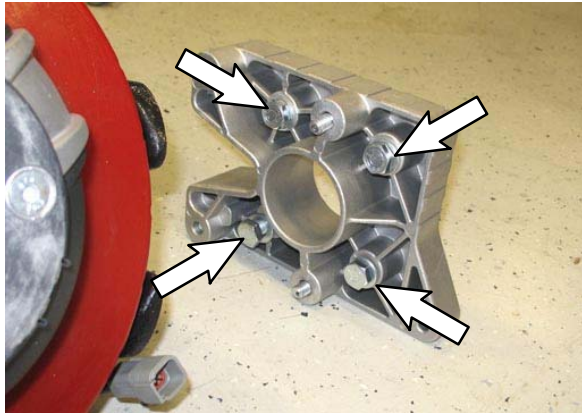
*NOTE: The hex screws must be saved from the old drive wheel assembly due to the thread pitch on the hex screws in the new drive wheel assembly (1) not being compatible for the drive wheel steering control assembly.*

6. Remove the four socket head screws securing the aluminum spacer to the new drive wheel assembly (1). Set the four socket head screws aside. (Fig. 4)



FIG. 4

7. Remove the aluminum spacer from the new drive wheel assembly (1) and remove the four M12 x 1.75 hex screws and flat washers from the aluminum spacer. Discard the four M12 x 1.75 hex screws and flat washers. (Fig. 5)



**FIG. 5**

8. Install the four M12 x 1.50 hex screws and flat washers removed from the old drive wheel assembly into the aluminum spacer removed from the new drive wheel assembly (1). (Fig. 5)

9. Use the four socket head screws to reinstall the aluminum spacer onto the new drive wheel assembly (1).
10. Install the new drive wheel assembly (1) onto the machine.
11. Connect the main wire harness to the drive wheel assembly(1).
12. Insert the main wire harness into the cable clamp and install the cable clamps onto the drive wheel assembly (1). (Fig. 1)
13. Slightly raise the front end of the machine, remove the jack stands from under the machine, and lower the front end of the machine to the ground.
14. Reconnect the battery cables to the batteries.
15. Start and test the machine to ensure the drive wheel propels the machine in both forward and reverse directions.

## INSTALLATION (Kit 9010159):

1. Remove the cable clamps from the drive wheel assembly. Set cable clamps and hardware aside. (Fig. 6)

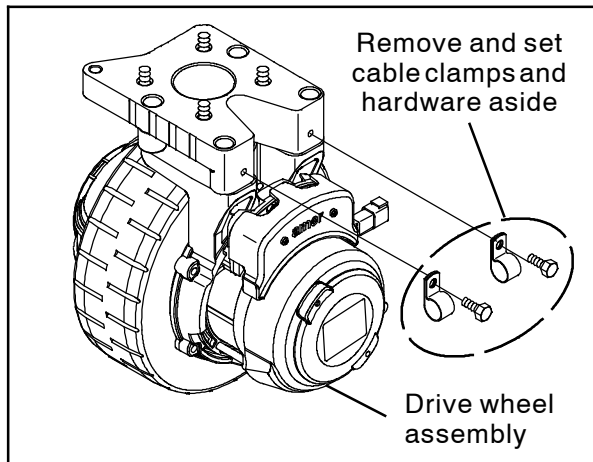


FIG. 6

2. Disconnect the main wire harness from the drive wheel assembly.
3. Loosen the hardware securing the drive wheel assembly to the machine and remove the drive wheel assembly from the machine. (Fig. 7)

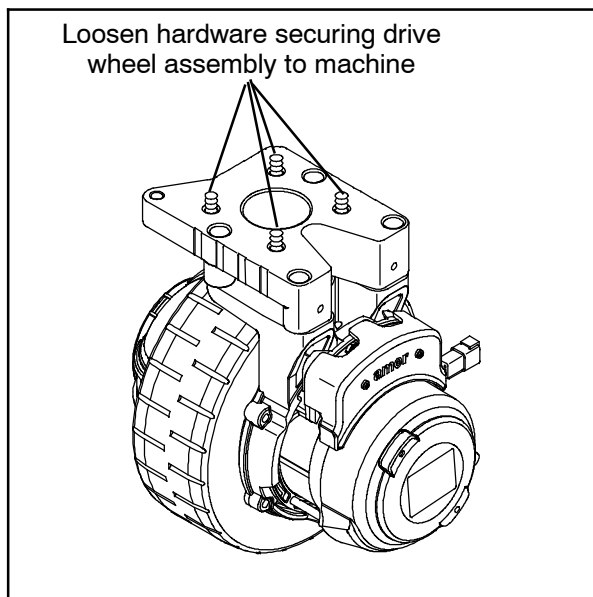


FIG. 7

4. Remove the four socket head screws securing the aluminum spacer to the drive wheel assembly. (Fig. 8)

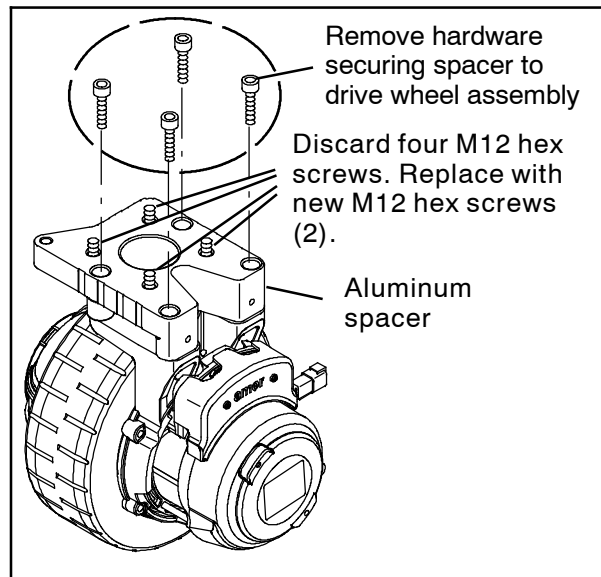
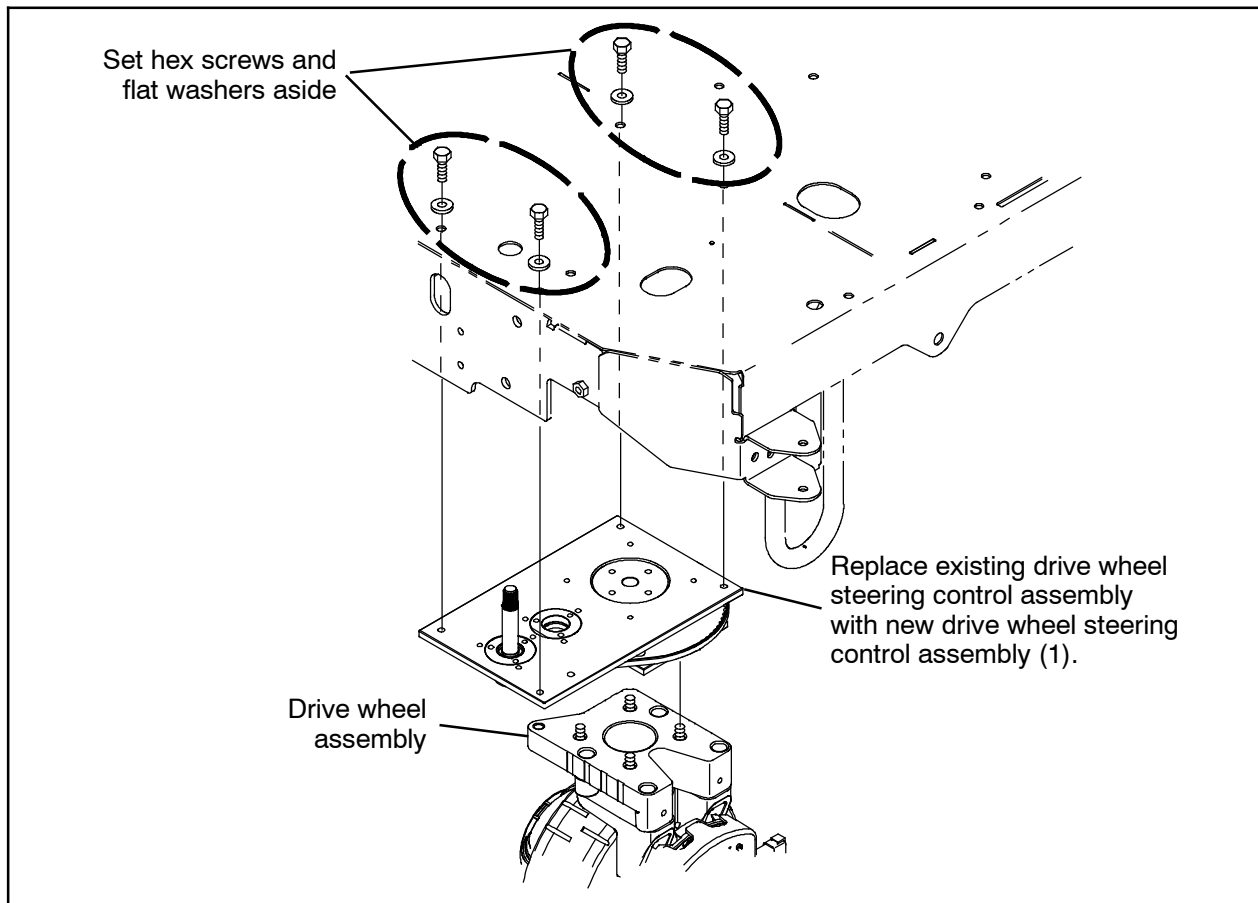


FIG. 8

5. Remove the aluminum spacer from the drive wheel assembly and remove the four hex screws and flat washers from the aluminum spacer. Set the aluminum spacer, flat washers, and the rest of the drive wheel assembly aside. Discard the four hex screws. (Fig. 8)

**NOTE:** The hex screws in the drive wheel assembly must be replaced new hex screws (2) due to the thread pitch on the existing hex screws not being compatible for the new drive wheel steering control assembly (1).

6. Install the four new M12 x 1.75 hex screws (2) and flat washers removed from the drive wheel assembly into the aluminum spacer removed from the drive wheel assembly. (Fig. 8)
7. Reinstall the aluminum spacer onto the drive wheel assembly.



**FIG. 9**

8. Remove all components necessary to access the hardware securing the drive wheel steering control assembly to the machine. (Fig. 9)
9. Remove the drive wheel steering control assembly from the machine. Set the four hex screws and flat washers aside. Discard the removed drive wheel steering control assembly. (Fig. 9)
10. Use the saved hardware to install the new drive wheel steering control assembly (1) onto the machine. (Fig. 9)
11. Reinstall any items removed to access the drive wheel steering control assembly hardware.
12. Install the drive wheel assembly onto the machine.
13. Connect the main wire harness to the drive wheel assembly.
14. Insert the main wire harness into the cable clamp and install the cable clamps onto the drive wheel assembly (1). (Fig. 6)
15. Slightly raise the front end of the machine, remove the jack stands from under the machine, and lower the front end of the machine to the ground.
16. Reconnect the battery cables to the batteries.
17. Start and test the machine to ensure the drive wheel propels the machine in both forward and reverse directions.

---

**Bill Of Materials For Wheel Kit, Replmt [T16] - 9010158**

	<b>Ref.</b>	<b>Tennant Part No.</b>	<b>Description</b>	<b>Qty.</b>
▽		9010158	Wheel Kit, Replmt [T16]	1
▲	1	1246663	Wheel Assy, Drive	1

**Bill Of Materials For Steer-Control Kit, Replmt [T16] - 9010159**

	<b>Ref.</b>	<b>Tennant Part No.</b>	<b>Description</b>	<b>Qty.</b>
▽		9010159	Steer- Control Kit, Replmt [T16]	1
▲	1	1071696	Steer- Control Assy, Wheel Drive	1
▲	2	06971	Screw, Hex, M12 X 1.75 X 50, 8.8	4

TENNANT COMPANY  
P. O. Box 1452  
Minneapolis, MN 55440-1452