



Model: T5

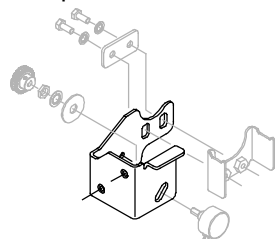
Control Console Bracket Replacement Kit



Control Console bracket p/n 1023516 (shown below) has been discontinued and replaced by this kit.

The new control console bracket is designed to prevent potential potentiometer gear misalignment caused from excessive force on the actuator bail. Install kit as illustrated below.

Discontinued Bracket
p/n 1023516

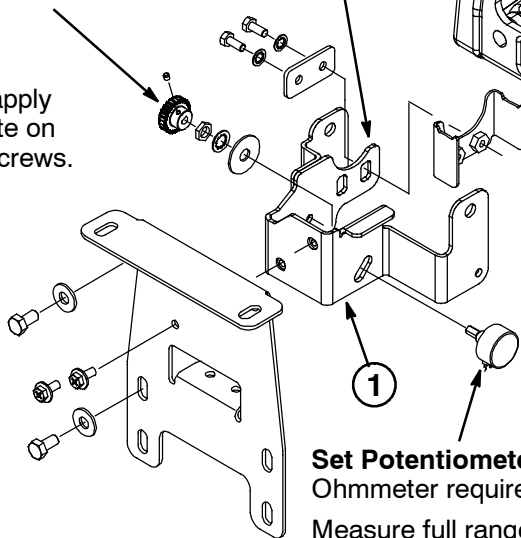


FOR SAFETY: Before installing kit, position machine on a level surface and disconnect the battery cables.

New Control
Console Bracket

Potentiometer
Gear

Re-apply
Loctite on
set screws.



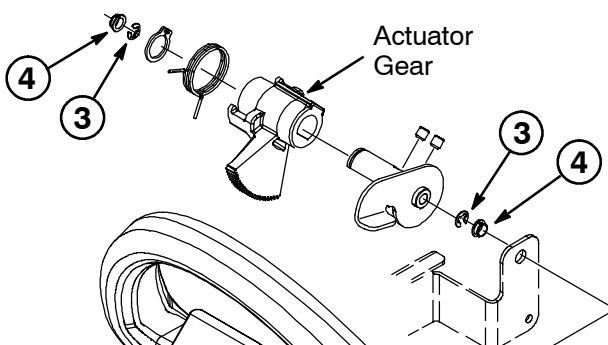
Set Potentiometer:
Ohmmeter required.

Measure full range and divide reading by two to locate mid point. Reading should be $5.0k\Omega (\pm .5k\Omega)$
(Mid point example: $5.0k\Omega \div 2 = 2.5k\Omega$)

Set the potentiometer to the mid point position.

Leave a little play in the potentiometer gear so it does not bind with the actuator gear.

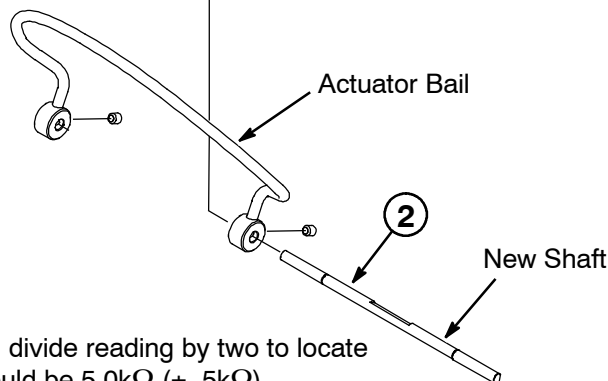
After installing kit test machine for proper operation.



Actuator
Gear

NOTE: Use a 1/2" (13mm) drill bit and enlarge the two shaft holes in the rotomold console.

With new bracket installed, the actuator bail may shift slightly from side to side.



Actuator Bail

New Shaft

KIT CONTENTS:

REF	PART #	DESCRIPTION	QTY.
▽	9008921	KIT, CONSOLE BRACKET, RPLMT	1
▲ 1	1065445	BRACKET, CONSOLE, BAIL	1
▲ 2	1067080	SHAFT, ACTUATOR, FWD/REV	1

REF	PART #	DESCRIPTION	QTY.
▲ 3	1035139	RING, RETAINING	2
▲ 4	1067122	SPACER, FLANGED, NYLON	2