



On-board Charger Service Kit

Models: T3e, Speed Scrub 17in/20in



This kit is intended for machines currently equipped with on-board chargers that may be subjected to corrosion issues with the on-board charger and/or its AC pigtail plug connection.

INSTALLATION INSTRUCTIONS:

Installation Time: 1.5 Hours

TOOLS REQUIRED: 5.5mm, 8mm socket wrench, 10mm, 1/2", 9/16" wrench, Phillips screwdriver.

Kit Contents

Part No.	Description	Qty.
1059522	CHARGER, 24VDC 11A 100/240VAC 50/60HZ	1
1061192	RETAINER, BRACKET, CORD, CHRGR	1
1009324	SCREW, PAN, PHL, 10-16 X 0.50, BLK	2
130773	TIE, CABLE, NYL, 11.0L, .14W, 3.0 MAX. D	6
1025642	CORD, POWER, 16/3, 15FT, BLK [US/JP Kit 9007851]	1
1059486	TRAY, BATTERY	1

FOR SAFETY: Before installing kit, park machine on a level surface and turn key off.

1. Remove batteries and old battery tray from machine (Figure 1). Discard old battery tray.



Fig. 1

2. Remove the old on-board battery charger from the machine and disconnect the red plug and harness wires as shown (Figure 2).

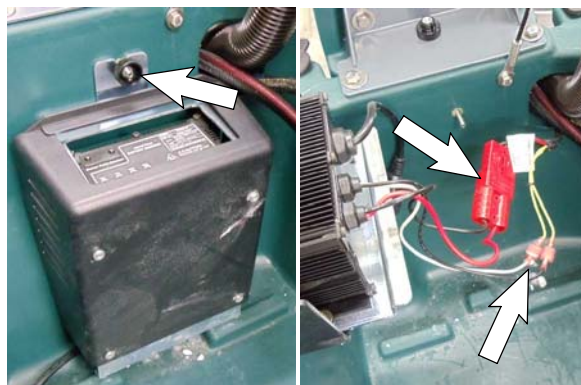


Fig. 2

3. Remove the cover and charger bracket from the old charger and reinstall them on the new battery charger (Figure 3).

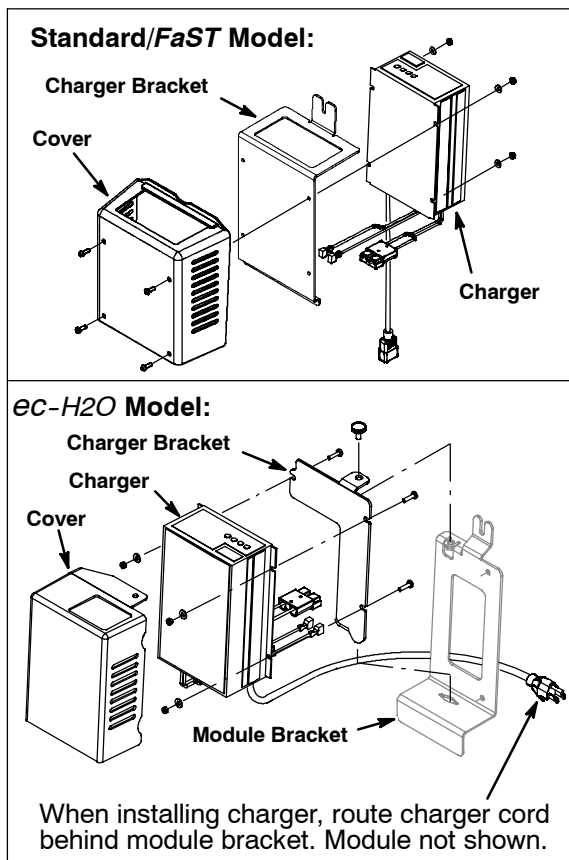


Fig. 3

4. Discard old on-board battery charger (Figure 4).

IMPORTANT: For US and Japan markets, also discard the old 15 ft/4.6m extension cord. Use new extension cord supplied with US/JP kit. For 220V/230V/240V markets, replace extension cord if exposed to corrosion (cord sold separately).



Fig. 4

On-board Charger Service Kit INSTALLATION INSTRUCTIONS - Continued

5. Reconnect the red plug and harness wires to new charger and mount charger assembly in place (Figure 5).

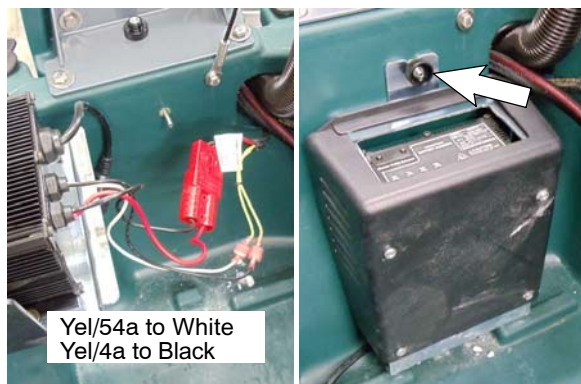


Fig. 5

6. Route the charger's power cord through the battery compartment hole as shown (Figure 6). For ec-H2O models, route the power cord behind the module bracket before routing through hole (See Figure 3).

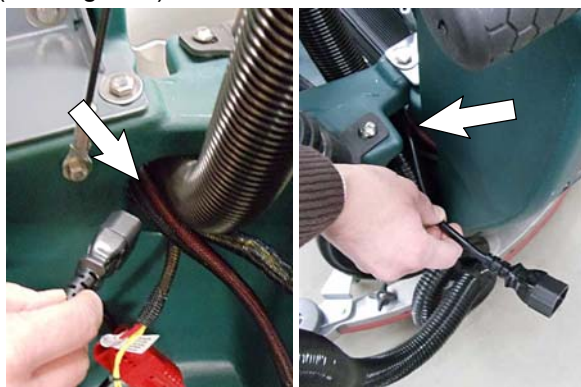


Fig. 6

7. Using (5) wire-ties, attach the charger's power cord to the retainer bracket as shown (Figure 7). Start by attaching plug first. Make sure the wire-tie is tight around the plug grip area as shown.



Fig. 7

8. Measure and mark the retainer bracket screw locations on the leftside of control console as specified (Figure 8).

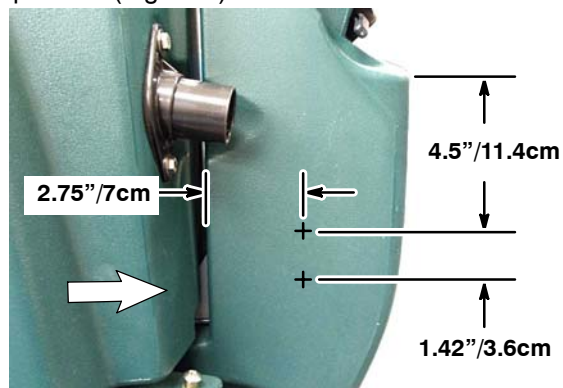


Fig. 8

9. Align retainer bracket holes with marks on console and attach bracket using (2) self-tapping screws (Figure 9). Connect the extension cord into the charger's power cord and hang cord on hook.

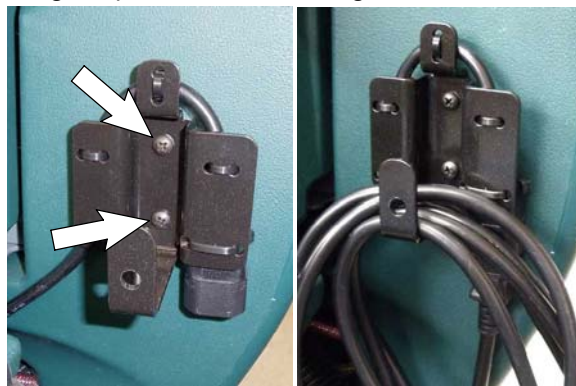


Fig. 9

10. Install new battery tray (Figure 10).

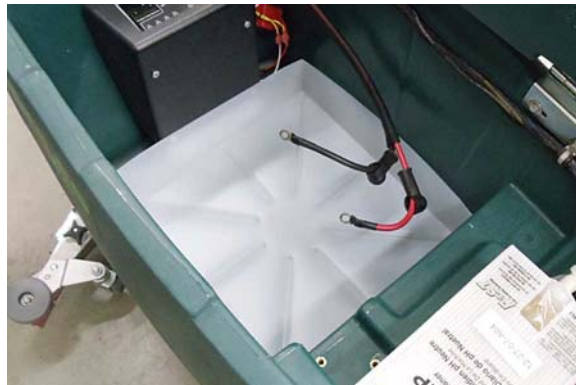


Fig. 10

11. Reinstall batteries.