



# INSTRUCTION BULLETIN

No. 9006191  
Machine: T15  
Published: 07-2010  
Rev. 00

**NOTE: DO NOT DISCARD the Parts List from the Instruction Bulletin. Place the Parts List in the appropriate place in the machine manual for future reference. Retaining the Parts List will make it easier to reorder individual parts and will save the cost of ordering an entire kit.**

*NOTE: Numbers in parenthesis ( ) are reference numbers for parts listed in Bill of Materials.*

Installation instructions for **kit number 9003243**

## SYNOPSIS:

This kit contains the parts needed to install a pre-sweep assembly onto T15 machines.  
Please follow step-by-step instructions.

## SPECIAL TOOLS / CONSIDERATIONS: NONE

(Estimated time to complete: 2 hours)

## PREPARATION:

1. Park the machine on a clean level surface, turn off the machine, remove the key, and set the parking brake.

**FOR SAFETY: Before leaving or servicing machine, stop on level surface, turn off machine, and remove key.**

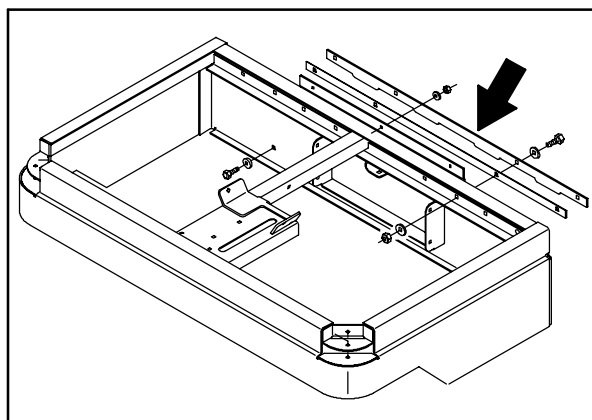
2. Open the operator seat to access the batteries and disconnect the battery connector from the machine connector.



**WARNING: Always disconnect battery cables from machine before working on electrical components.**

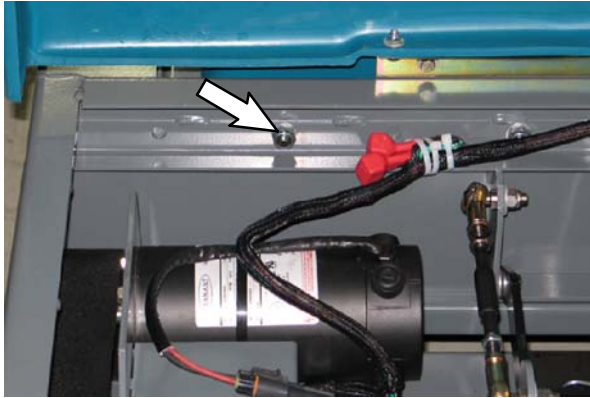
## INSTALLATION:

1. Set the pre-sweep assembly (15) in front of the machine. Align the mounting holes in the pre-sweep assembly with the mounting holes in the front of the machine. Refer to Fig. 1.



**FIG. 1**

2. Insert and tighten the mounting hardware. Refer to Fig. 2.



**FIG. 2**

3. Connect the Pre-Sweep harness to the main harness. Refer to Fig. 3.



**FIG. 3**

4. Use the switch panel (1) as a template to drill four 7/64" holes into the front shroud. Refer to Fig 4.



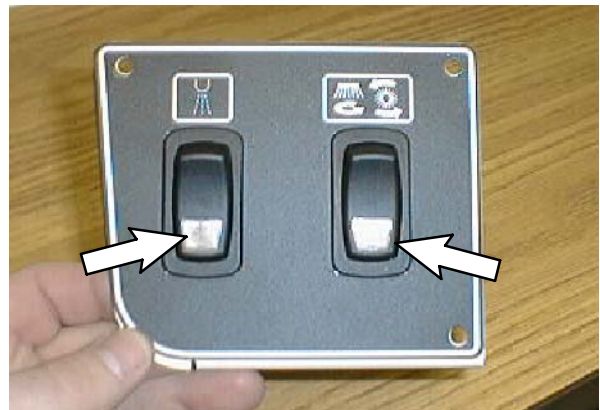
**FIG. 4**

5. Cut a 2" hole into the side of the front shroud. Refer to Fig. 4.
6. Install the pre-sweep operation label (2) onto the switch panel (1). Refer to Fig. 5 and Fig. 13.



**FIG. 5**

7. Install both rocker switches (3) into the switch panel (1). Be sure rocker switches (3) are positioned with the indicator light to the bottom as shown in Fig. 6 and Fig. 13.



**FIG. 6**

8. Use four pan screws (4) to install the switch panel (1) onto the front shroud. Refer to Fig. 13.
9. Route the main wire harness pre-sweep connectors through the 2" hole cut in the front shroud.
10. Attach the main wire harness to the rocker switches (3). Refer to Fig. 14.

11. Use three pan screws (6) and three flat washers (7) to install the panel cover (5) onto the switch panel (1). Refer to Fig. 7 and Fig. 13.



FIG. 7

12. Remove the hardware holding the electrical plate to the front channel weldment and carefully lower the electrical plate away from the front channel weldment. **Do not** break any wire / cable connections when lowering the electric plate. Set the mounting hardware aside.
13. Remove the cover from the 25-Amp circuit breaker (8). Set the cover aside.
14. Install the 25-Amp circuit breaker (8) onto the electrical plate. Refer to Fig. 8 and Fig. 13.

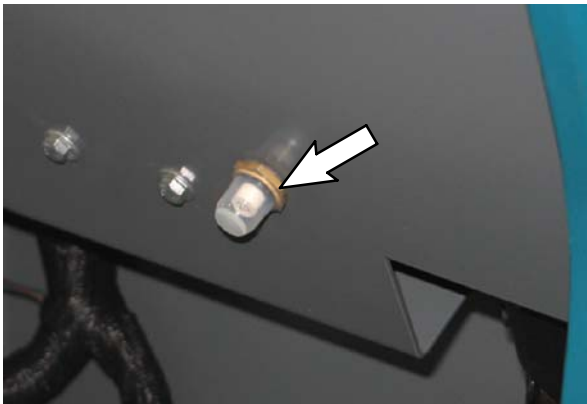


FIG. 8

15. Connect the main wire harness to the 25-Amp circuit breaker (8). Refer to Fig. 15.

16. Reinstall the cover onto the 25-Amp circuit breaker (8). Refer to Fig. 8 and Fig. 13.

17. Install the 10-Amp circuit breaker (9) into the electrical plate. Refer to Fig. 9 and Fig. 13.

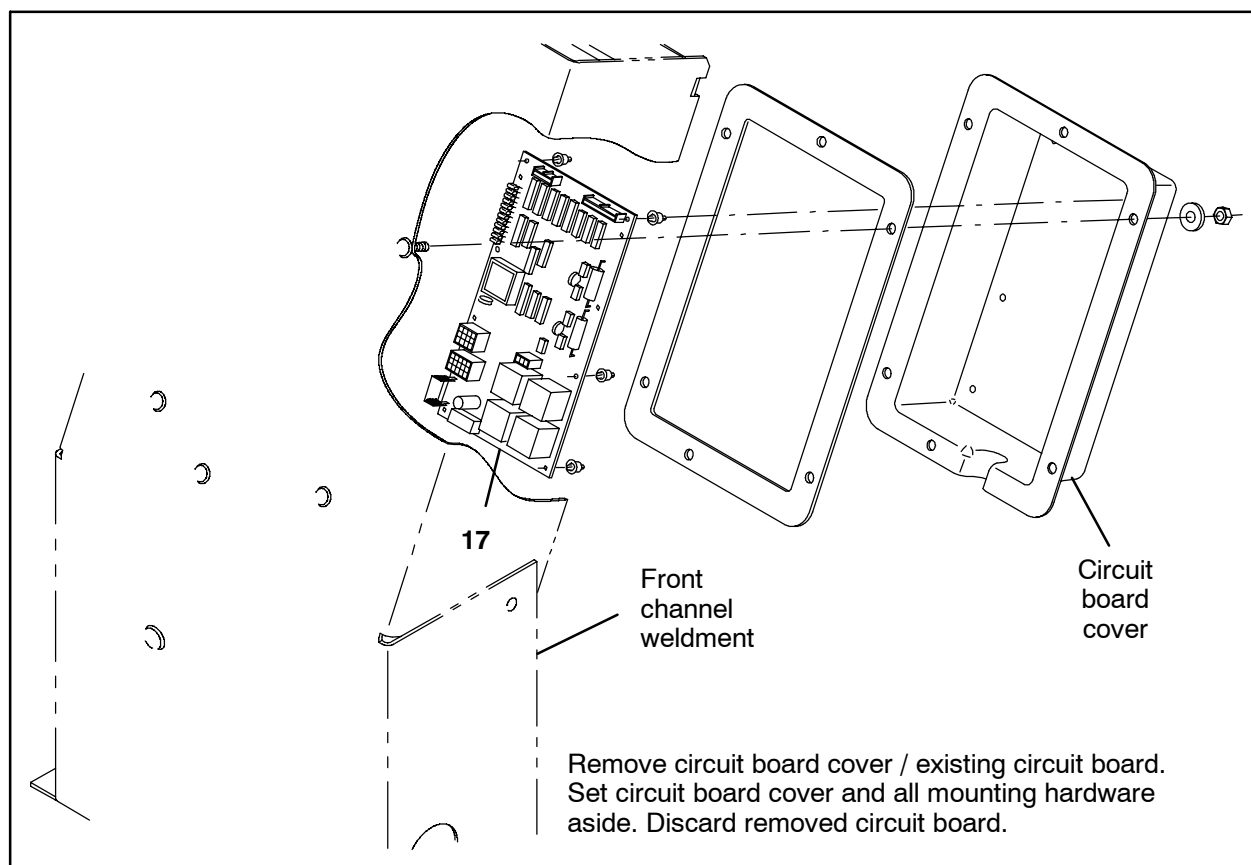
*NOTE: Install the 10-Amp circuit breaker (9) only if there is not a circuit breaker already in circuit breaker location CB4. Proceed to the next step if there is a 10-Amp circuit breaker already installed in this location.*



FIG. 9

18. Connect the main wire harness to the 10-Amp circuit breaker (9). Refer to Fig. 15.
19. Install the circuit breaker boot (10) onto the 10-Amp circuit breaker (9). Refer to Fig. 9 and Fig. 13.

20. Remove the circuit board cover from the front channel weldment. Set the circuit board cover mounting hardware aside. Refer to Fig. 10.
21. Disconnect all cables from the circuit board and remove the circuit board from the circuit board cover. Set all circuit board mounting hardware and the circuit board cover aside. Discard the removed circuit board.
22. Install the new circuit board (17) into the circuit board cover. Refer to Fig. 10.
23. Reconnect all cables to the the new circuit board (17).
24. Reinstall the circuit board cover onto the front channel weldment. Refer to Fig. 10.
25. Reinstall the electrical panel onto the front channel weldment.



**FIG. 10**

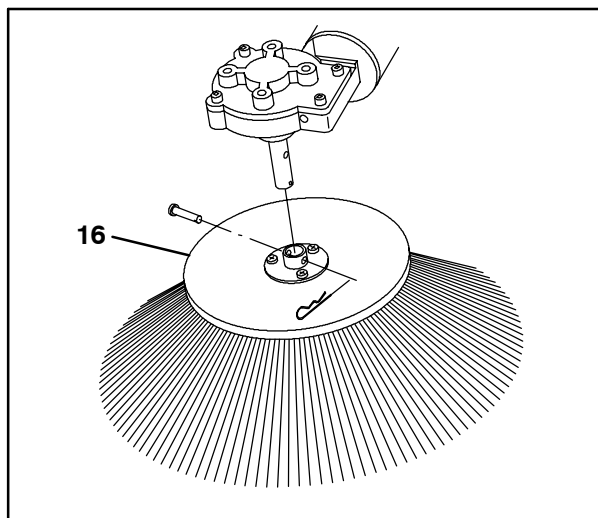
26. Install the non-skid tread (12) onto the side bumper (11). Refer to Fig. 12.

27. Use seven hex screws (13) and seven flat washers (14) to install the side bumper (11) onto the machine. Refer to Fig. 12.

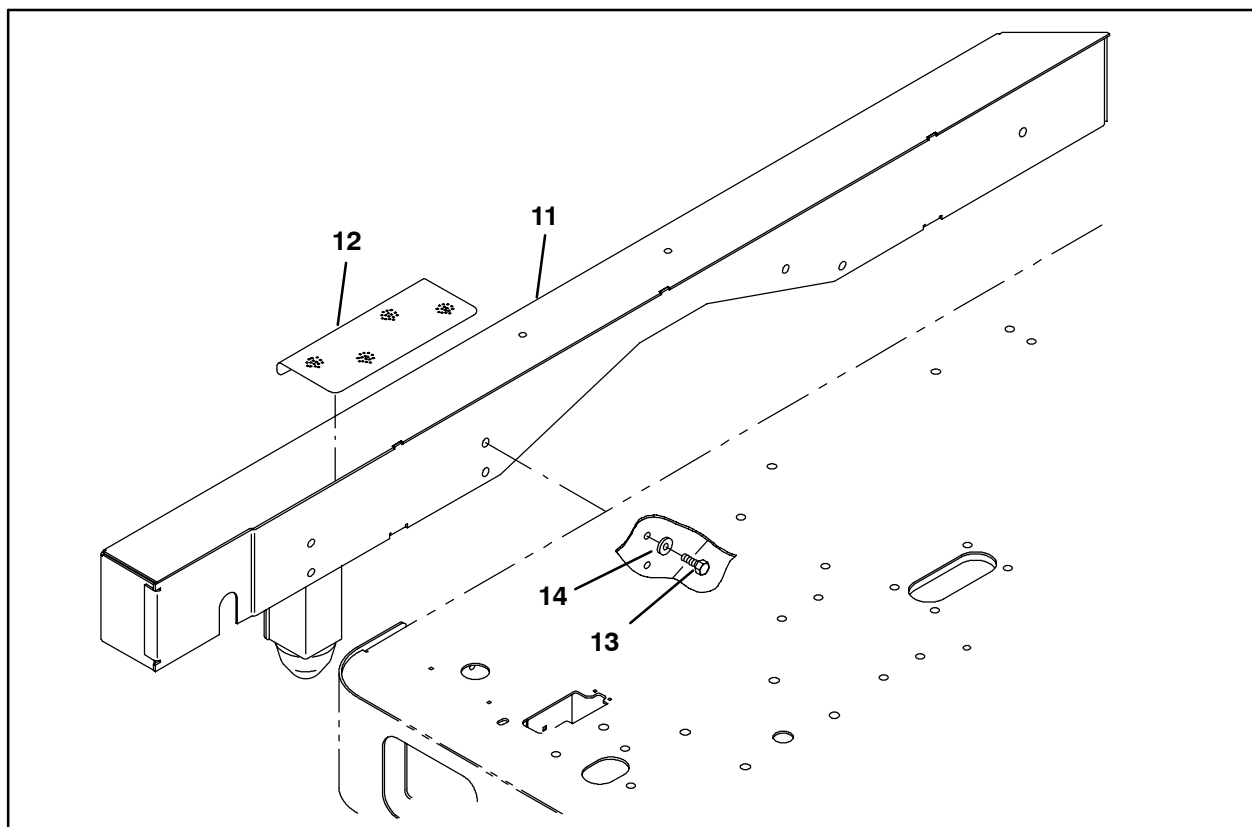
28. Install the side brush (16) onto the pre-sweep assembly (15). Refer to Fig. 11.

29. Reconnect the battery connector to the machine connector.

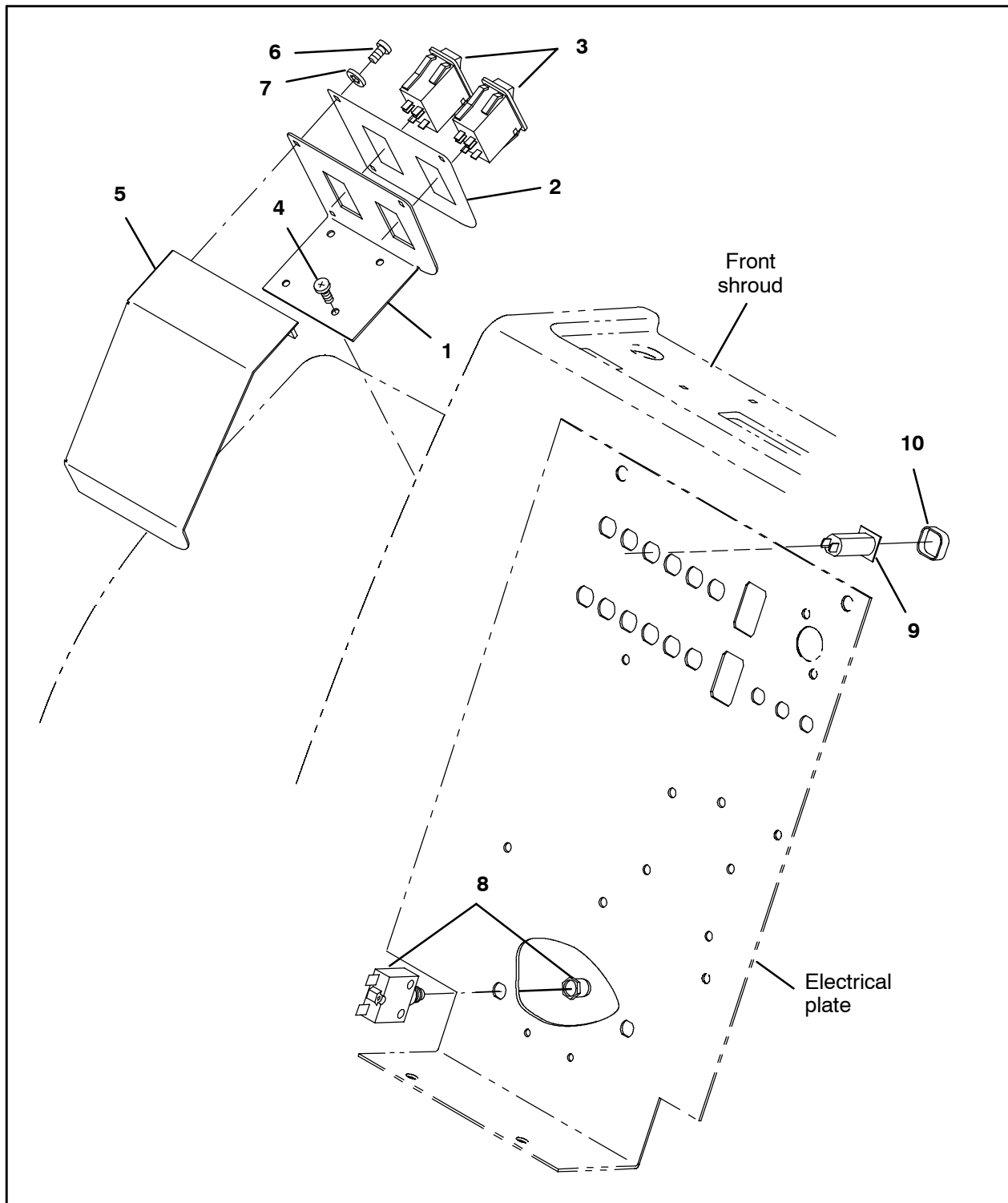
30. Start and operate the machine. Turn on and operate the Pre-Sweep system to ensure the brushes and dust control function. Refer to the Operators Manual for instructions how to operate the Pre-Sweep system.



**FIG. 11**



**FIG. 12**



**FIG. 13**

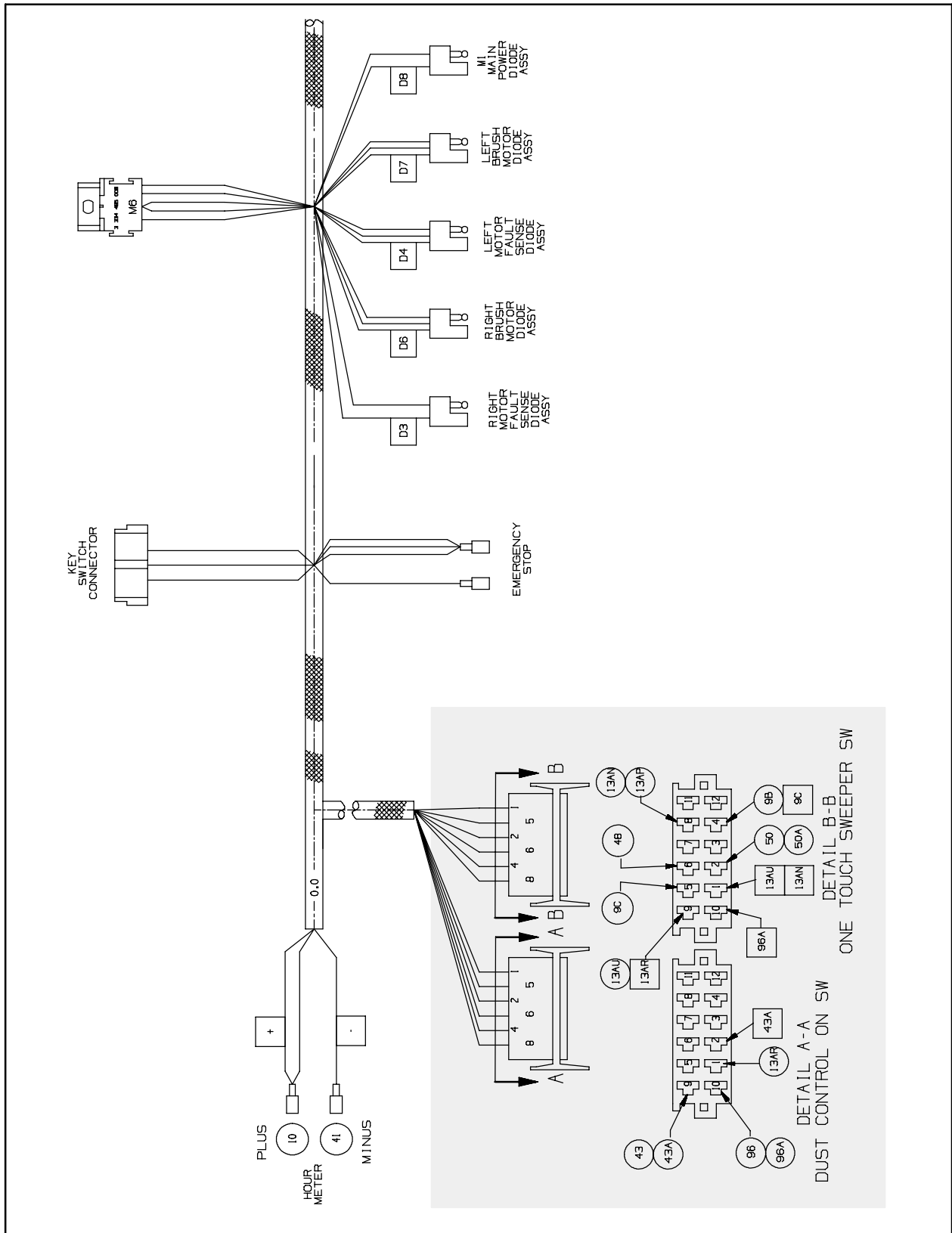


FIG. 14 - Main Wire Harness Diagram

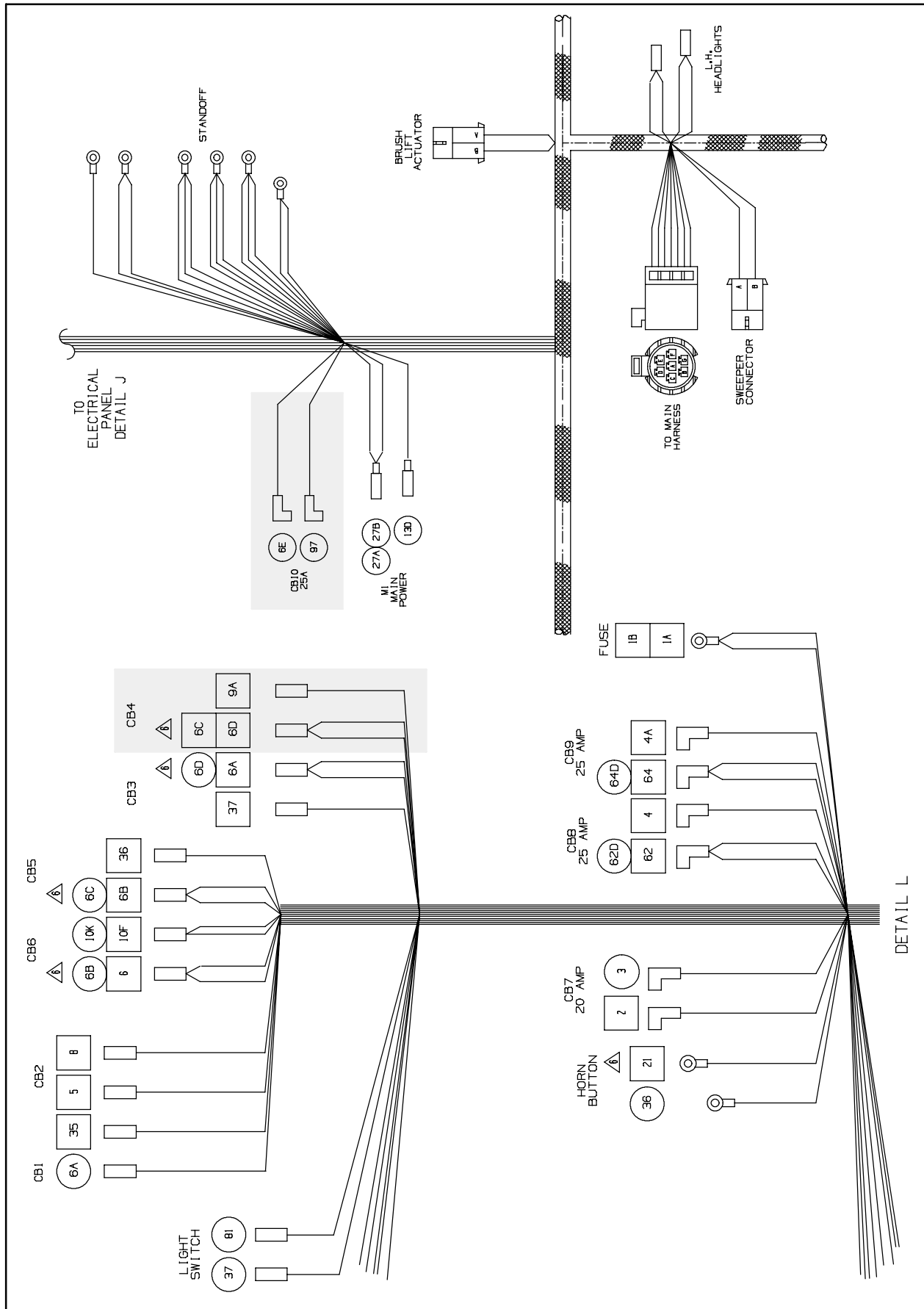


FIG. 15 - Main Wire Harness Diagram



**Bill of Materials for Pre-Sweep Kit, CI [T15] - 9003243**

	<b>Ref.</b>	<b>Tennant Part No.</b>	<b>Description</b>	<b>Qty.</b>
▽		9003243	Pre-Sweep Kit, CI [T15]	1
▲	1	1035229	Panel, Switch	1
▲	2	392152	Label, Opertnl, Pre-Sweep	1
▲	3	398500	Switch, Rocker, Dpdt, On / None / On	2
▲	4	222481	Screw, Pan, Phl, 10-14 X 0.50, F/ Plstc	4
▲	5	392147	Cover, Panl	1
▲	6	39648	Screw, Pan, Phl, 10-24 X 0.38, G1	3
▲	7	32980	Washer, Lock, Int, 10	3
▲	8	383724	Circuit Breaker, 25.0a, Resettable	1
▲	9	1046151	Circuit Breaker, 10a, Resettable	1
▲	10	1046173	Boot, Circuit Breaker	1
▲	11	1035513	Bumper Wldt, Side	1
▲	12	223350	Tread, Non-Skid, 04.5w 10.0l	1
▲	13	09010	Screw, Hex, M8 X 1.25 X 25, SS	7
▲	14	32491	Washer, Flat, 0.31, Std	7
▲	15	9003242	Pre-Sweep Assy [T15]	1
▲	16	28096P	Brush Assy, Disk, Swp, 15.0d, Pyp	1
▲	17	1015148	Circuit Board Assy [7200 Sepex]	1

TENNANT COMPANY  
P. O. Box 1452  
Minneapolis, MN 55440-1452