



# On-Board Charger Kit

Models: T5



## INSTALLATION INSTRUCTIONS:

**Installation Time: 2 Hours**

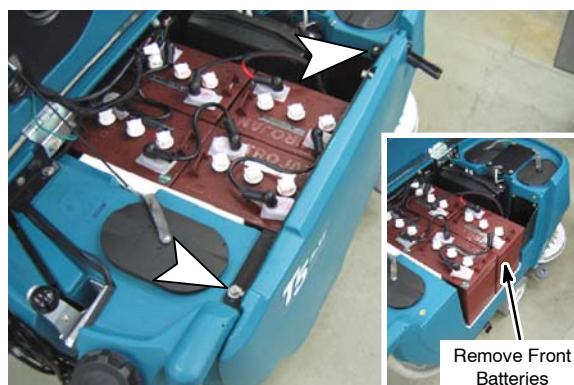
**TOOLS REQUIRED:** 9/16", 5.5mm, 10mm and 13mm  
Sockets, 4mm Hex Wrench, Phillips Screwdriver,  
Prying Tool, Blue Thread Adhesive

### PREPARATION

1. Park the machine on a clean level surface.
2. Turn off the machine and remove the key.

**FOR SAFETY: Before installing kit, stop on level surface, turn off machine, and remove key.**

3. Remove the (2) bolts that hold the machine's right side panel in place, then remove the side panel from machine (Figure 1).



**Fig. 1**

4. Disconnect the positive and negative battery cables and remove the two front batteries from machine.

**FOR SAFETY: Wear protective gloves and eye protection when handling batteries and battery cables. Avoid contact with battery acid.**

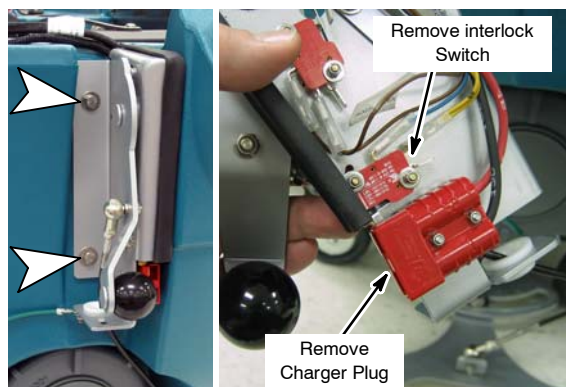
### INSTALLATION

1. Lower the squeegee lift lever to relieve tension on the lift cable, then remove the squeegee lift bracket. Remove the red charger plug assembly and charger interlock switch from the bracket. Discard the interlock switch (Figure 2).

#### Kit Contents

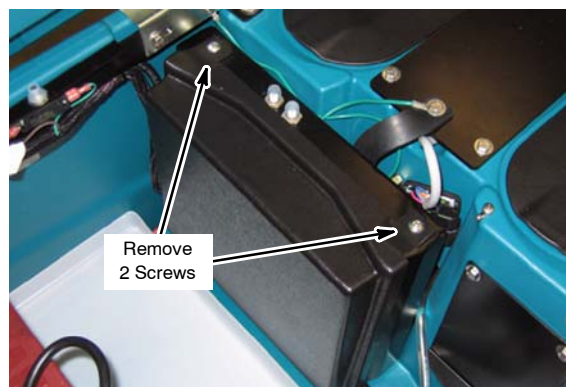
Part No.	Description	Qty.
1022874	Charger, 120v (Kit #9003295)	1
1026909	Charger, 230v (Kit #9003296)	1
1025642	Cord, Power, 120v (Kit #9003295)	1
1026325	Cord, Power, 230v (Kit #9003296)	1
609062	Screw, Trs, M5 x 0.80 x 12, Phl, SS	3
610906	Hook, Cord	2
1024965	Bolt, Shld, 08MMD x 030mm, M06 x 1.0	2
611311	Spring, Cmpr, 0.40OD .05WIR, 0.5L	2
01684	Washer, Flat, 0.27B 0.69D .05, SS	3
08712	Nut, Hex Lock, M6 x 1.00 SS, NL	2
01683	Washer, Flat, 0.22B 0.50D .05, SS	2
1022059	Panel, Side	1
26395-2	Clamp, Cable, Stl, 0.38D x 0.38W	1
1028175	Label, Instr. (Charger Settings)	1
1024779	Label, Side, T5	1
1024780	Label, Side, T5 FaST	1
600624	Label, Parking Brake (TNV Machine only)	1
130773	Tie, Cable, Nylon	6

**IMPORTANT:** Failure to remove these parts may result in electrical damage to the machine.



**Fig. 2**

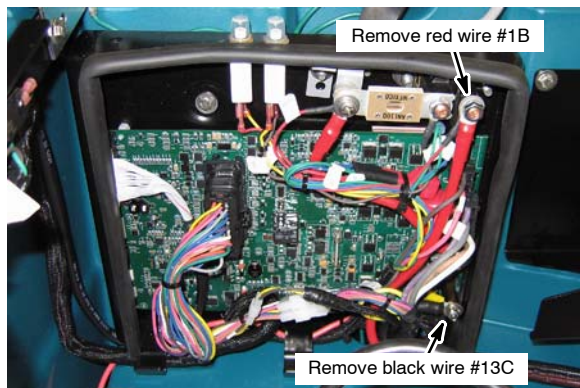
2. Move to the front of the battery compartment and remove the control box cover to access the wire connections (Figure 3).



**Fig. 3**

## On-Board Charger Kit INSTALLATION INSTRUCTIONS - Continued

3. Remove the red (#1B) and black (#13C) wires coming from the charger plug. Discard charger plug assembly (Figure 4).

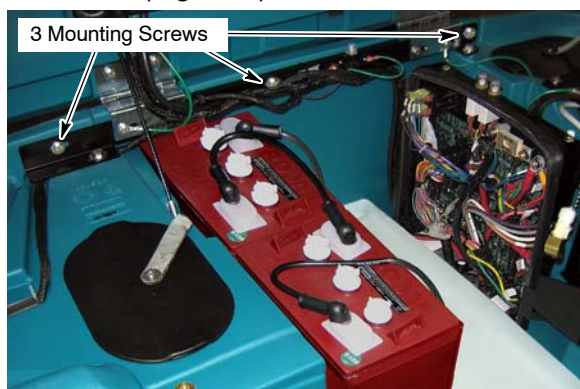


**Fig. 4**

4. Remove the machine's left side panel. It will be replaced at step #10 by the new panel supplied in the kit.

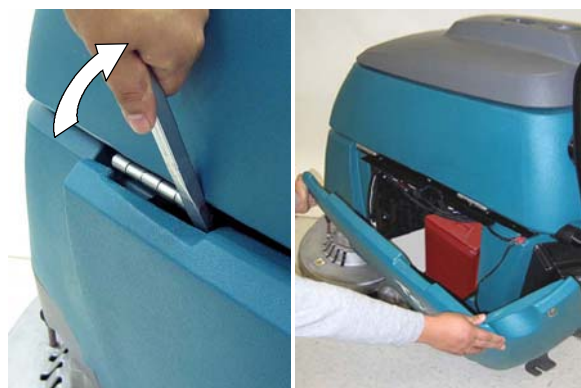
To remove the side panel:

- a. Remove the 3 mounting screws as shown (Figure 5).



**Fig. 5**

- b. Lower the recovery tank and pry out the top left edge of the panel to remove (Figure 6).



**Fig. 6**

5. Mount the on-board charger to the machine in the location shown, using just the top two mounting screws at this step. Use a small amount of blue adhesive on the screw threads. Route double black wires from the charger up the left side, across the top and down to the squeegee bracket as shown. Plug these wires into the yellow (#4A/4B) and blue (#26) wires that were originally on the charger interlock switch (Figure 7).

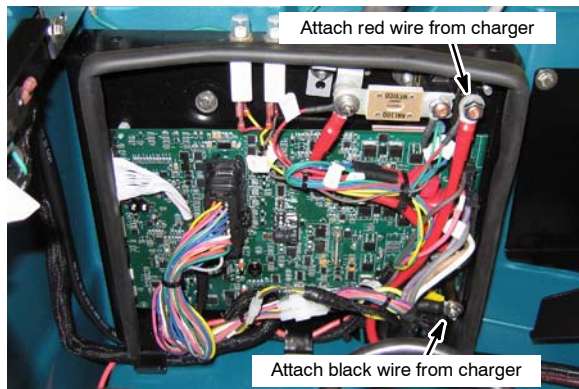


**Fig. 7**

6. Route the red and black charger wires forward to the control box and attach them where the old charger plug wires were removed. Take special care to properly re-tighten all hardware. Loose connections will cause electrical damage to the machine. Re-attach control box cover (Figure 8).

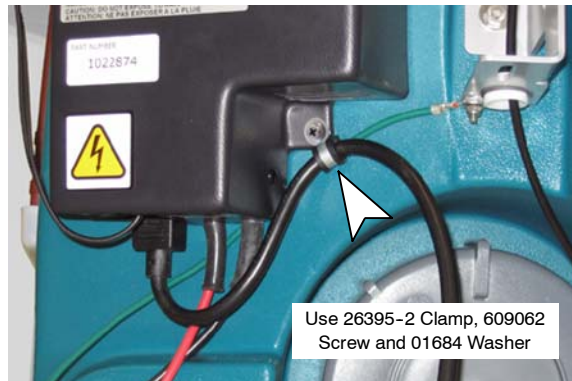


## On-Board Charger Kit INSTALLATION INSTRUCTIONS - Continued



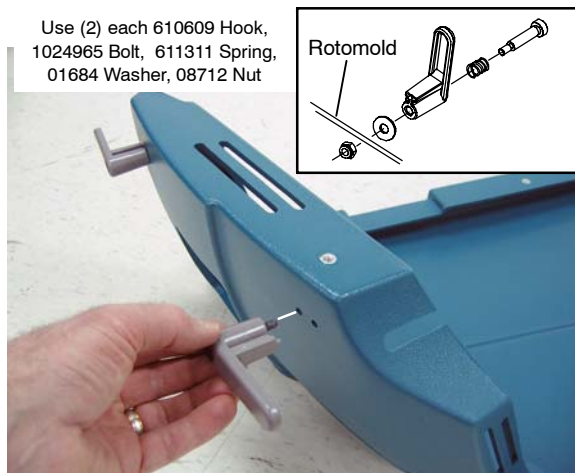
**Fig. 8**

7. Re-attach squeegee lift bracket to machine.
8. Plug the power cord into the charger. Secure the cord to the machine using the clamp, mounting screw and flat washer provided in the kit. Use a small amount of blue adhesive on the screw threads (Figure 9).



**Fig. 9**

9. Attach the cord hooks to the new side panel as shown (Figure 10).



**Fig. 10**

10. Attach the new side panel to the machine in place of the old one. Tuck the red and black charger wires into the pocket on the inside of the cover to prevent them from hanging loose. Route the charger power cord through slot on bottom of side panel and neatly wrap the cord on the cord hooks when not in use (Figure 11).



**Fig. 11**

11. Apply the new battery label to the wall of the battery compartment in the location shown (Figure 12).



**Fig. 12**

12. Apply the new T5 side label from the kit, and re-install the batteries and right side panel. Re-connect positive and negative battery cables.

Apply new parking brake label near the parking brake (Europe machine only)

13. Refer to your machine's operator manual for charger instructions.

## On-Board Charger Kit INSTALLATION INSTRUCTIONS - Continued

### ON-BOARD BATTERY CHARGER SETTINGS

The charger settings must be set for your battery type before charging. Failure to properly set will result in battery damage.

To determine your battery type, see battery label. Contact your battery supplier if not specified.

To verify the setting of the charger, connect the charger cord into an electrical receptacle. The charger will display a sequence of codes. One of the codes will either read "GEL" or "Acid" (Figure 13).

GEL = Set for sealed/maintenance free batteries  
Acid = Set for wet/lead acid batteries



Fig. 13

To change the setting, unplug the charger, peel up the corner of the display label and set the switches accordingly (Fig. 14). The charger cord must be unplugged when resetting.



Fig. 14