



**Typhoon 16B
3540
Battery
Wet/dry
Vacuum**

SWITCH RELAY KIT

This kit is intended for machines manufactured before April 2004.

The purpose of the this kit is to reduce the load on the On/Off switch preventing it from overheating.

INSTALLATION INSTRUCTIONS:

Installation Time: 1/2 Hour

TOOLS REQUIRED: 1/2" & 14mm Wrench, Needle Nose Pliers, Adjustable Pliers and Philips Screwdriver.

1. Empty tank and disconnect the battery cables. 1/2" wrench is required.

FOR SAFETY: When servicing machine, disconnect battery connections before working on machine. Wear protective gloves and safety glasses when handling batteries or battery cables.

2. Remove the old handle assembly from the tank housing (Figure 1).

NOTE: This kit requires the use of existing mounting hardware.

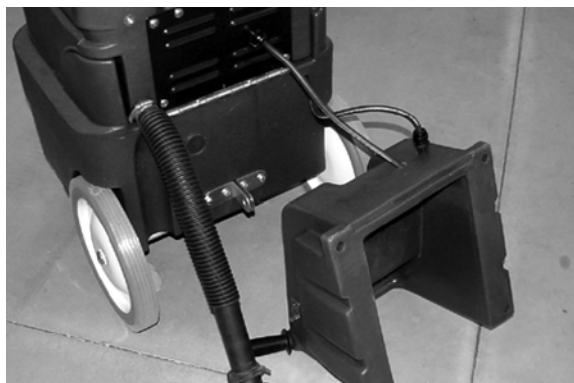


Fig. 1

3. Disconnect the tank housing from the battery compartment as shown (Figure 2). Philips screwdriver required.

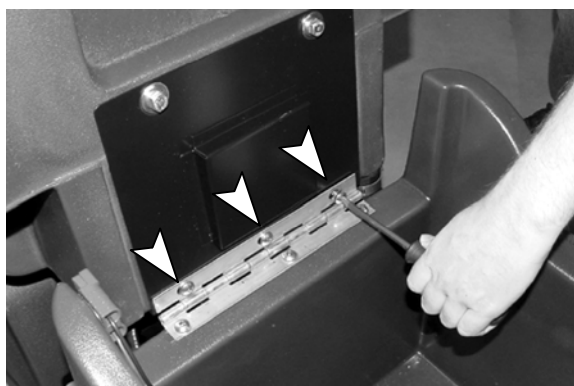


Fig. 2

KIT CONTENTS		
P/N	DESCRIPTION	QTY.
9000806	KIT, RELAY Tennant (PRE-ASSEMBLED)	
9000731	KIT, RELAY Nobles (PRE-ASSEMBLED)	
1006890	BRACKET, DRAIN HOSE HANGER	1
1012216	RELAY, ELE, 24V, VF7	1
1015893	WIRE, JUMPER	1
1015901	WIRE ASSY, 14/2X45" BLK	1
1015926	WIRE, JUMPER, 21"- .25FEM- .25FEM	1
1015928	WIRE ASSY, 14/2X17" BLK	1
140825	SCREW #6X1/2 PANPHL	2
200823	GRIP, HANDLE TUBE	2
600654	LABEL, DASH	1
608461	HANDLE, GREEN	1
607666	HANDLE, TEAL	1
608605	SWITCH, ROCKER, 250VAC 10A DPST	1

4. Remove the metal panel from the tank housing, Philips screwdriver required, as shown. Disconnect the vacuum motor wire terminals and remove the wire harness from the metal panel (Figure 3).

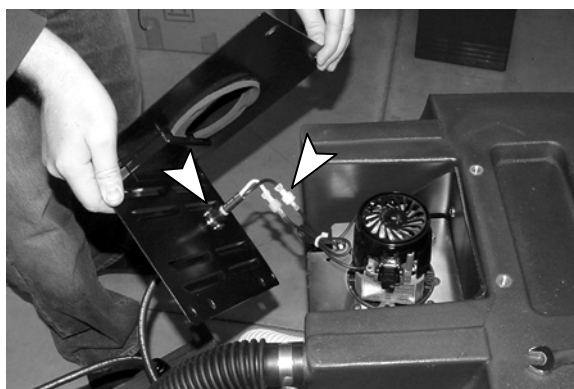


Fig. 3

5. Disconnect the battery wire harness from the battery compartment and dispose the old handle assembly (Figure 4).

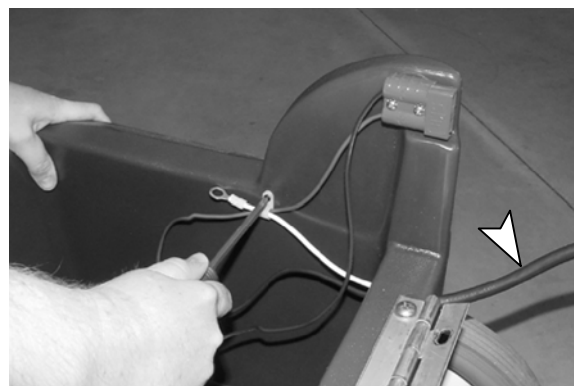


Fig. 4

INSTALLATION INSTRUCTIONS - Continued

6. Repeat the installation process in reverse to install the new handle assembly.
7. Use needle nose pliers to help guide wire terminals through grommet.(Figure 5).

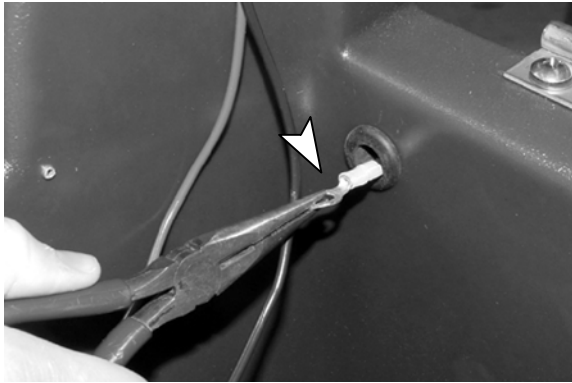


Fig. 5

8. Transfer the serial number tag from the old handle to the new handle for future reference (Figure 6).

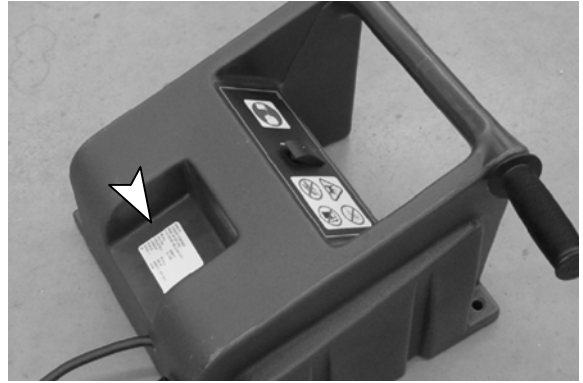


Fig. 6