



BRUSH REPLACEMENT KIT

KIT CONTENTS

| P/N. | Description | Qty. |
|---------|-------------------|------|
| 1006441 | Brush, 13", 4-Row | 1 |

INSTALLATION INSTRUCTIONS:

(Installation Time: 40 min.)

TOOLS REQUIRED: Phillips Screwdriver, 7/16" & 1/2" Wrenches, Putty Knife, 5/64" Allen Wrench, Caulking Gun with Silicone Sealant

⚠ WARNING: Hazardous Voltage. Shock or electrocution can result. Always unplug machine before servicing.

1. Check to be sure recovery tank is empty, then tip machine back. Remove (8) base plate mounting screws, then lower the base plate (Figure 1).

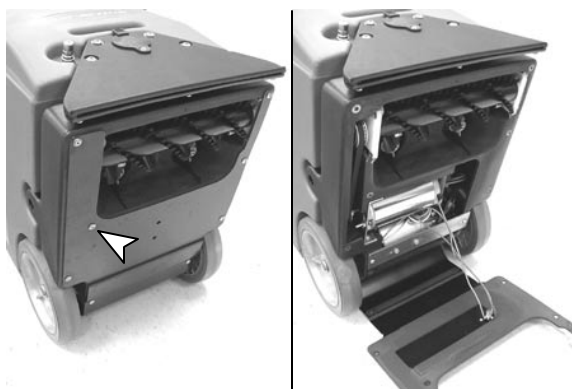


FIG. 1

2. Remove old brush assembly (Figure 2).



FIG. 2

3. Remove hex nut and loosen (2) set screws on pulley, then remove pulley from brush shaft – note pulley orientation (Figure 3).

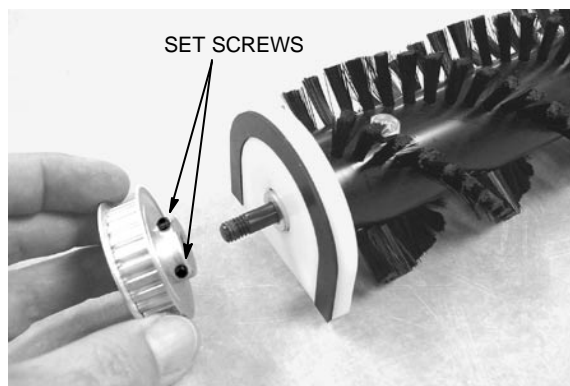


FIG. 3

4. Remove spacer and both bearing blocks from brush assembly (Figure 4).

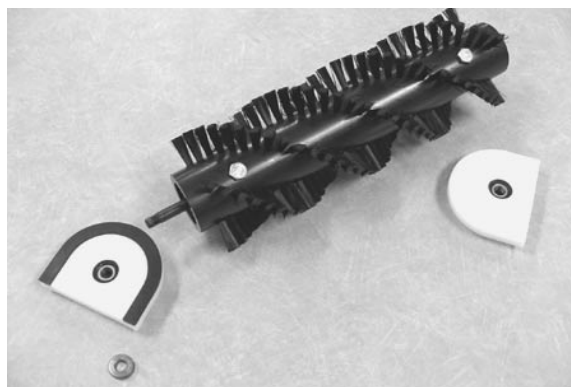


FIG. 4

5. Remove (4) bolts that attach brush to brush shaft and remove old brush (Figure 5).

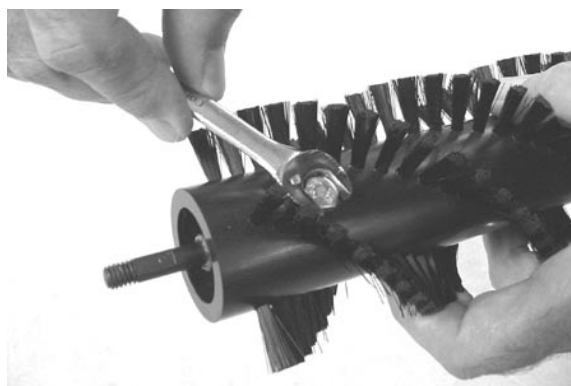


FIG. 5

INSTALLATION INSTRUCTIONS – Continued

6. Mount new brush, (2) bearing blocks and spacer to brush shaft in reverse order of dis-assembly (Figure 6).

Note: Be sure end of brush with locating hole is at threaded end of the brush shaft.

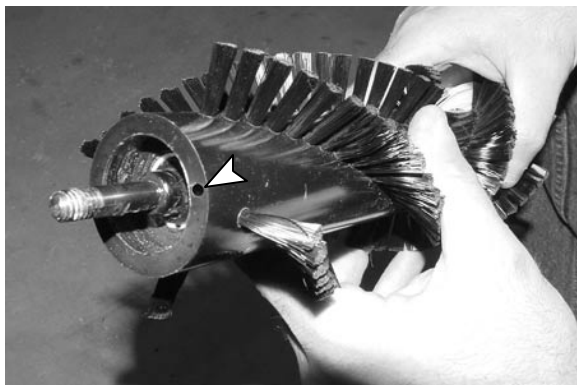


FIG. 6

7. Re-attach pulley to brush shaft. Line up one of (2) set screws on pulley with flat surface on brush shaft. Tighten set screws and re-attach hex nut (Figure 7).

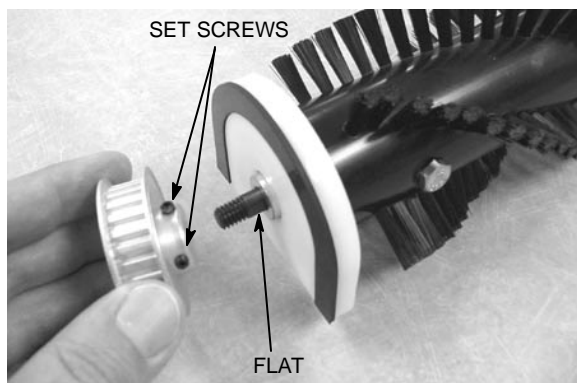


FIG. 7

8. Remove old silicone residue from bearing block mounting surfaces on brush housing (Figure 8).



FIG. 8

9. Add new silicone sealant to bearing block mounting surfaces (Figure 9).



FIG. 9

10. Re-attach belt to pulley and mount new brush assembly to base – “V” pattern of brush points towards back of machine (Figure 10).



FIG. 10

11. Re-attach base plate to machine (Figure 11).



FIG. 11

12. Allow approx. 12 hours for silicone sealant to cure before using machine.