



36V TRANSAXLE REPLACEMENT KIT

INSTALLATION INSTRUCTIONS:

(Installation Time: 2 hours)

TOOLS REQUIRED: 7/16", 9/16", 11/16" Socket Wrench, Small Flat Head Screwdriver and Snip Pliers.

1. Remove batteries from machine, 9/16" wrench required.

FOR SAFETY: When servicing machine, wear safety glasses and protective gloves when handling batteries or battery cables. Avoid contact with battery acid.

2. With adequate assistance, carefully turn the machine upside down to access the drive transaxle motor (Figure 1).

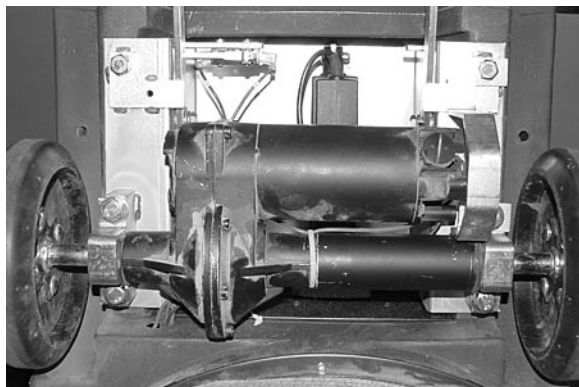


Fig. 1

3. Remove the wheels from the old transaxle, 7/16" socket wrench required (Figure 2).



Fig. 2

KIT CONTENTS

P/N.	Description	Qty.
612845	TRANSAXLE, 36V MOTOR, 116 RPM	1
612908	ADAPTER, WIRE TRANSAXLE	1
140501	NUT, 1/4-20	8
602881	BRACKET, TRANSAXLE MOUNT	1
130040	WIRE TIE 6.0 x .12	2

4. Carefully cut the wire-tie that secures the motor's wire harness, then unplug the wire harness connector. Use a small flat head screwdriver to disengage the connector plug (Figure 3).

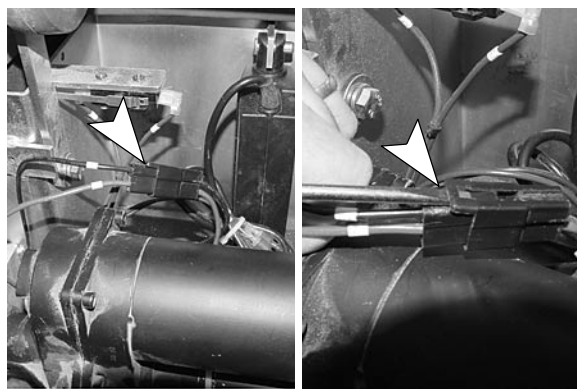


Fig. 3

5. Remove the transaxle mounting brackets and motor guard bracket, 11/16" wrench required. Then remove the old transaxle from the machine (Figure 4).

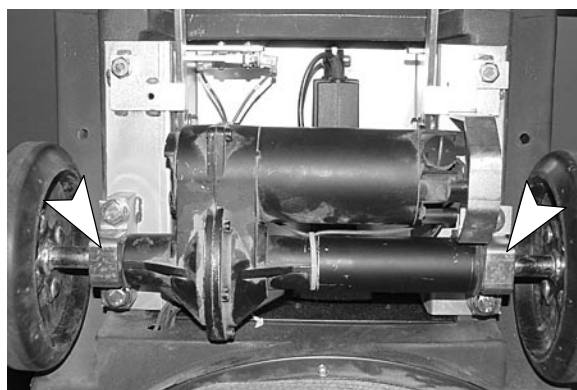
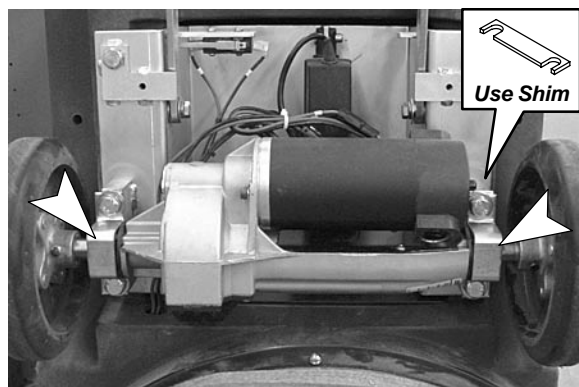


Fig. 4

36V TRANSAXLE REPLACEMENT KIT

INSTALLATION INSTRUCTIONS – Continued

6. Install the new transaxle on the machine. Use the existing mounting hardware including the supplied axle mounting bracket, if needed. Use soapy water to slide brackets over rubber mounts if necessary. Make sure to reinstall the shim on the side shown below (Figure 5).



NOTE: If your machine was equipped with a motor guard bracket, dispose of bracket. It is not required with new transaxle.

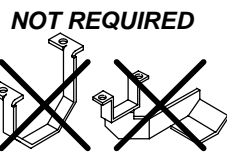


Fig. 5

7. Reinstall the old wheels on the new transaxle. Use existing washers with the new nuts supplied with the kit.
8. Connect the transaxle wiring to the machine using the transaxle wire adapter supplied with the kit (Figure 6).

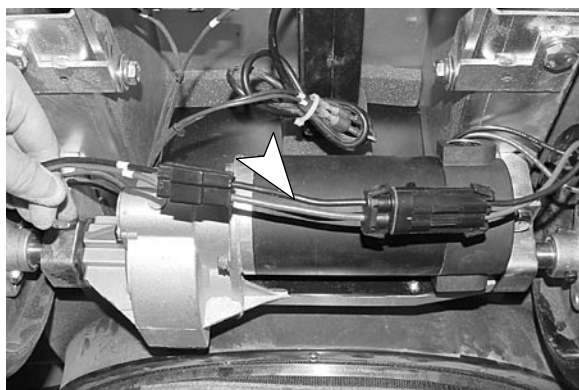


Fig. 6

9. Secure the transaxle wire adapter with wire-ties supplied (Figure 7).

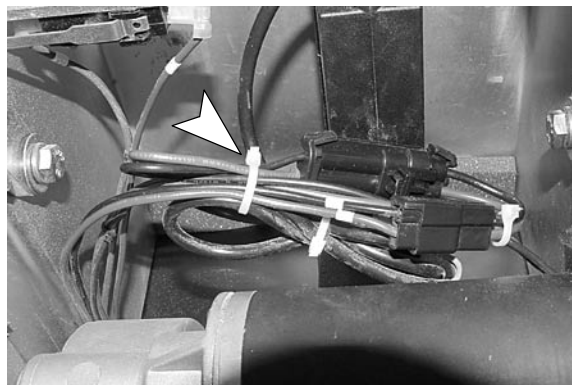


Fig. 7

10. Carefully turn the machine to the upright position and reinstall the batteries (Figure 8).

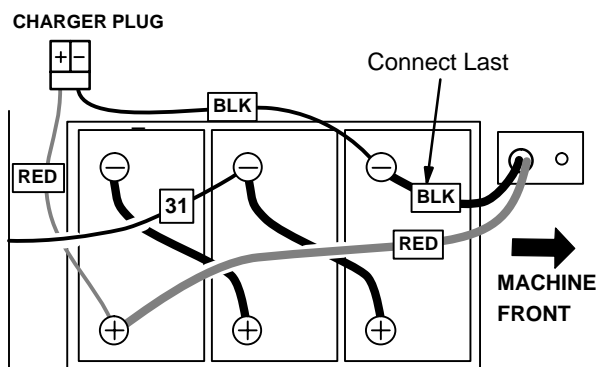


Fig. 8

FOR SAFETY: When servicing machine, wear safety glasses and protective gloves when handling batteries or battery cables. Avoid contact with battery acid.

11. Test the machine for proper operation. Turn the speed control knob to the slowest setting and rotate the control grips completely forward. The machine should begin to move slowly at a maintained speed. With the grips still rotated completely forward, gradually turn the speed control knob to the maximum speed. The machine should begin to accelerate to the maximum speed.