



SQUEEGEE LIFT LEVER RETROFIT KIT

INSTALLATION INSTRUCTIONS: (Installation Time: 30 min.)

TOOLS REQUIRED: Philips Screwdriver, 13mm & 7/16" Socket Wrench, 5.5mm & 5/16" Nut Driver, 5.5mm Open End Wrench.

FOR SAFETY: Before installing kit, disconnect positive (+) battery cable from batteries.

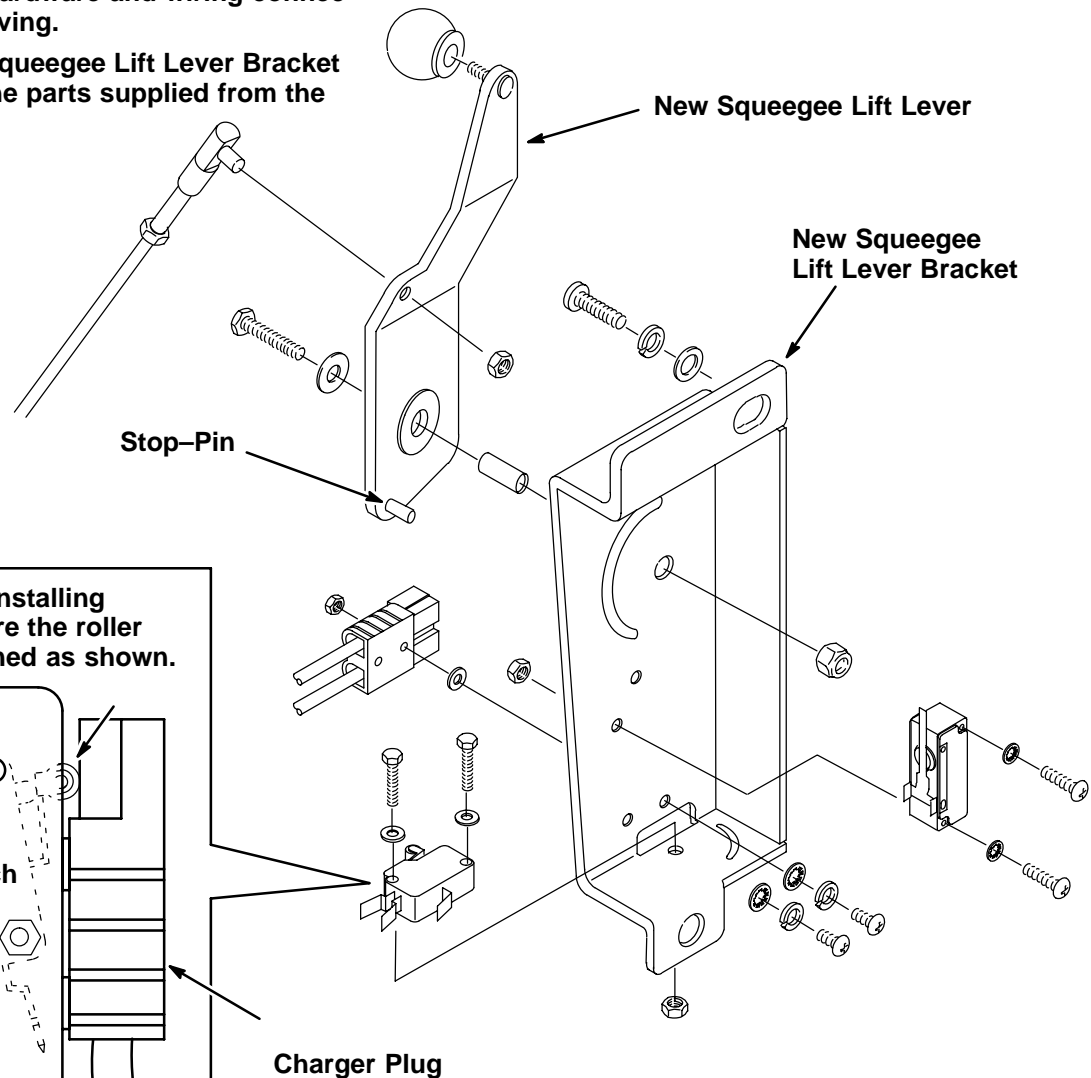
Remove the Squeegee Lift Lever Bracket from the machine. Then completely disassemble the bracket and lever assembly as shown. Dispose of the old bracket and lever.

Take note of the hardware and wiring connections before removing.

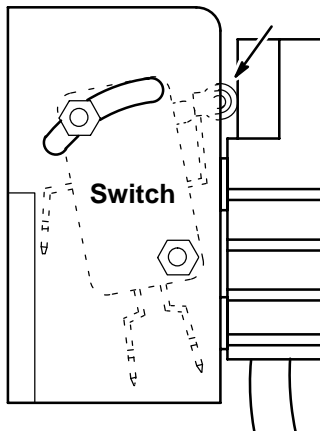
Reassemble the Squeegee Lift Lever Bracket assembly using the parts supplied from the kit.

KIT CONTENTS

| P/N. | Description | Qty. |
|--------|-------------------------------|------|
| 612834 | Bracket, Lever, Squeegee-5400 | 1 |
| 612835 | Lever, Squeegee-5400 | 1 |



NOTE: When reinstalling switch, make sure the roller wheel is positioned as shown.



**Bottom View of Lever
Squeegee Bracket**