

FOOT LATCH KIT

INSTALLATION INSTRUCTIONS:

(Installation Time: 15 min.)

TOOLS REQUIRED: Needle Nose Pliers, 10mm Wrench, 5/8" Wrench

FOR SAFETY: When servicing machine, unplug cord from wall outlet.

1. Lower handle to floor and turn machine over to access foot latch mounting hardware (Figure 1).



Fig. 1

2. Disengage torsion spring from foot latch by pulling it back and out, as shown. Remove and discard spring (Figure 2).



Fig. 2

3. Using a 10mm wrench, remove M6 screw, old latch and mounting hardware, and discard.
4. Install new pivot screw, spacer, hex bushing, foot latch and flat washer (Figure 3).

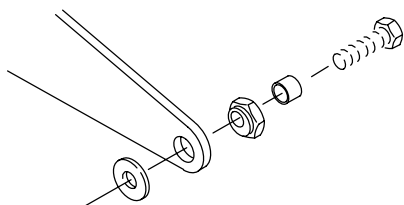


Fig. 3

KIT CONTENTS

| P/N. | Description | Qty. |
|--------|-----------------------------|------|
| 610905 | Screw, M6 X 1 X 25 HXHDCP | 1 |
| 140154 | Spacer, .25 X .38 X .31 | 1 |
| 605078 | Bushing, Hex | 1 |
| 604808 | Latch, Foot Base (Hardened) | 1 |
| 579210 | Washer, M6.4 X 18 X 1.5 FLT | 1 |
| 610861 | Spring, Torsion | 1 |

5. Turn hex bushing until all play is taken out between upper housing and base (Figure 4).

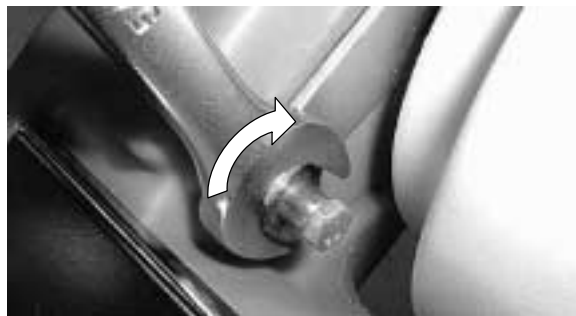


Fig. 4

6. Hold hex bushing in place and tighten pivot screw securely (35 in/lb) (Figure 5).



Fig. 5

7. Install new torsion spring as shown in Figure 2.
8. Stand vacuum upright and check for proper foot latch operation. When handle is latched in the vertical position, the handle should be firm. Repeat steps 5 and 6 if necessary.