



ES™ KIT

INSTALLATION INSTRUCTIONS:

(Installation Time: 1 hour)

TOOLS REQUIRED: Standard & Philips Screwdriver,
Electric Drill w/ 1/8", 1/4", 7/16", 1/2", 11/16" & 1-3/8" Drill Bits
& 1/4" NPT Tap.

FOR SAFETY: Before installing kit, disconnect positive (+) battery cable from batteries.

KITS CONTENTS

630136	Pump, 24V	1
630385	Fitting, Nipple 3/4"	1
630145	Timer, 24V	1
210044	Valve, Check	1
630419	Switch, Rocker	1
578720	Splashguard, Switch	1
130738	Light, Indicator	1
140753	Screw, 1-24x1.5	1
601490	Fitting, Bulkhead	1
140552	Nut, 10-24 Nylock	1
604952	Cover, Control Panel	1
150415	Fitting, Elbow 1/4mX3/8H	1
25160	Tubing 5/8ODx3/8ID	.438 ft
25160	Tubing 5/8ODx3/8ID	1.083 ft
140310	Clamp, Hose	4
630138	Filter, Screen	1
603166	Switch, Float	1
604787	Harness, ES Wire	1
604858	Asm., Wire	1
604859	Asm., Wire	1
604788	Kit, Wire	1

STEP 1: Drill holes as indicated.

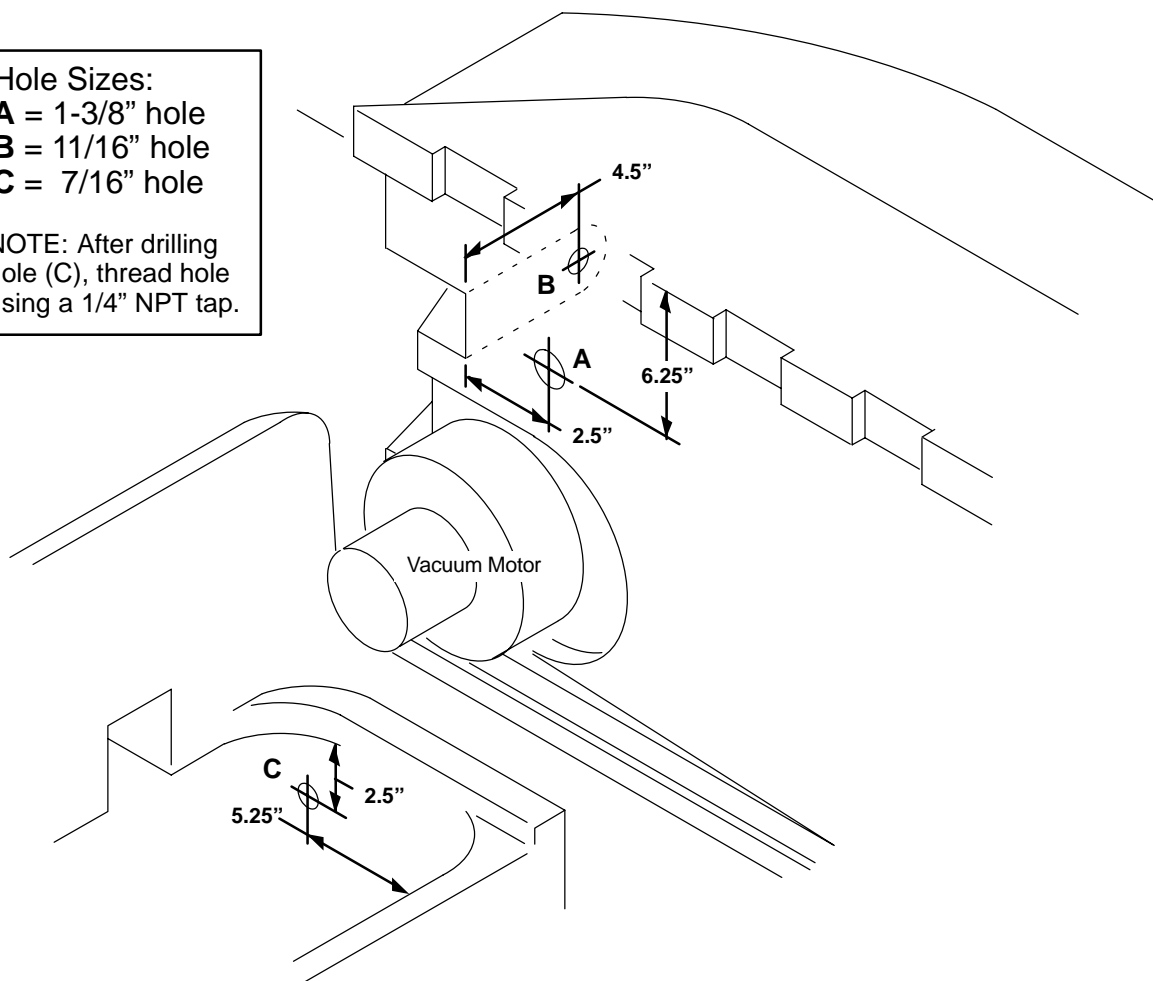
Hole Sizes:

A = 1-3/8" hole

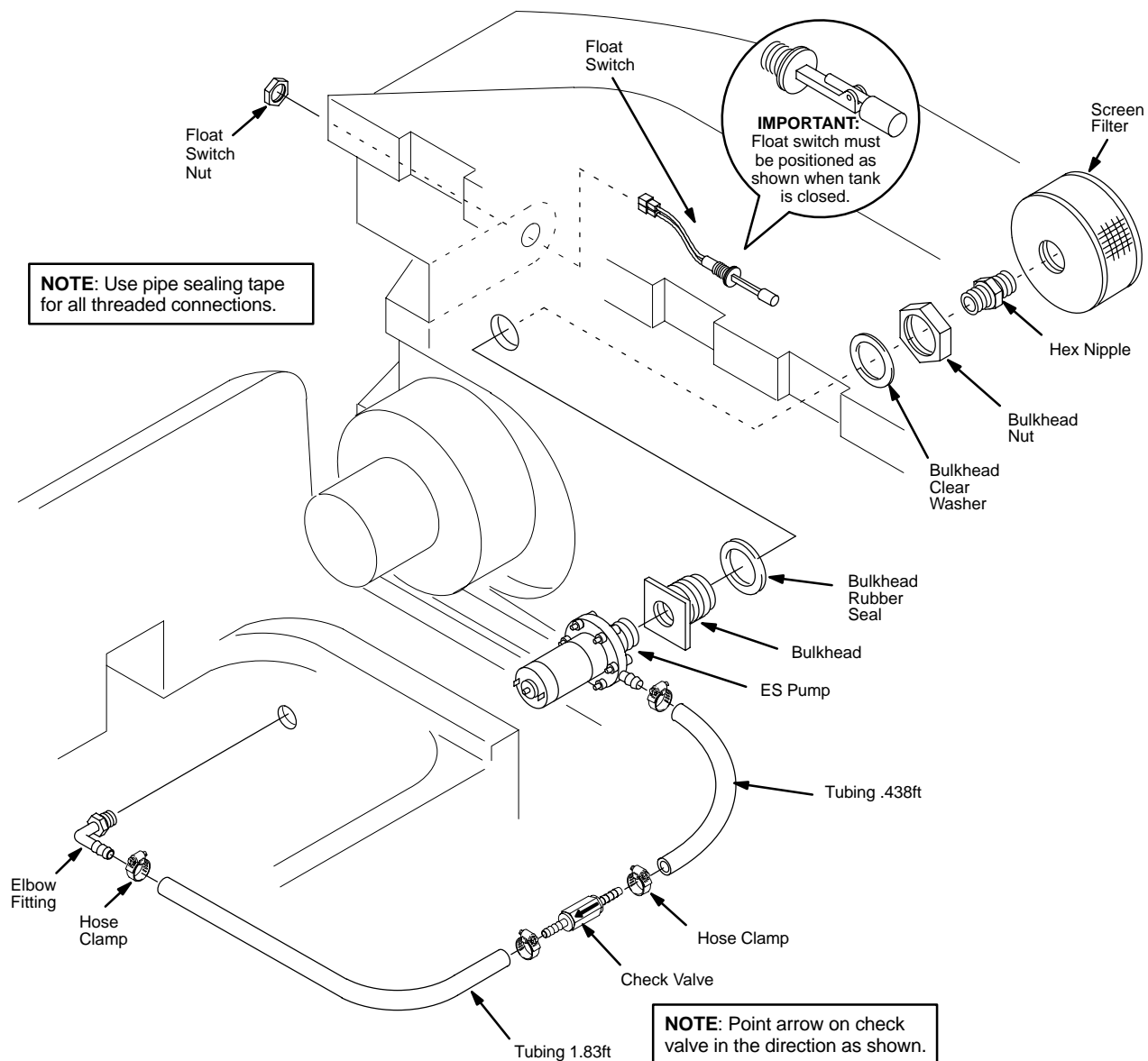
B = 11/16" hole

C = 7/16" hole

NOTE: After drilling hole (C), thread hole using a 1/4" NPT tap.



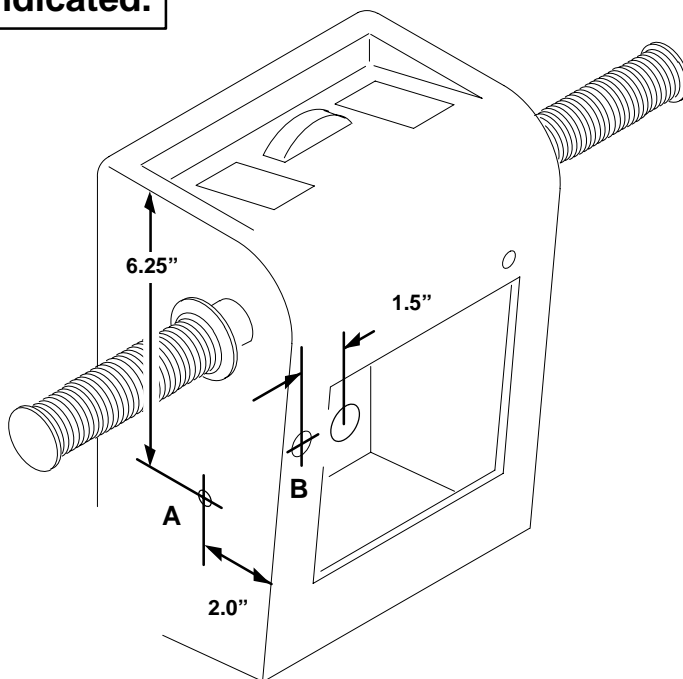
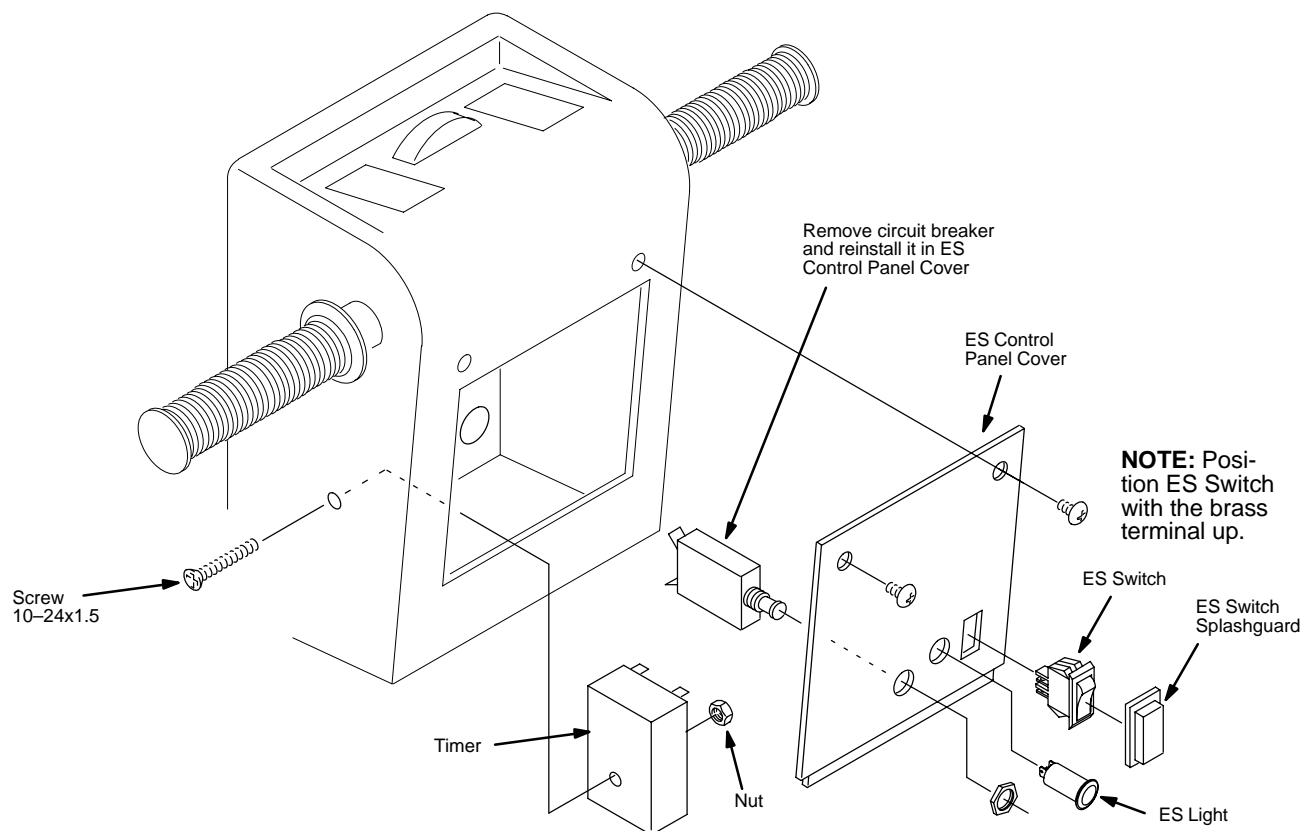
ES KIT

STEP 2: Install ES Components as Shown.

ES KIT

STEP 3: Drill holes as indicated.

A = .125" hole
B = .5" hole

**STEP 4: Install ES components as shown.**

ES KIT

STEP 5: Connect ES Wiring as Shown.