



SQUEEGEE SWIVEL PULLEY RETROFIT KIT

INSTALLATION INSTRUCTIONS: (Installation: 1/2 hour)

TOOLS REQUIRED: 13mm, 11mm & 10mm Wrench

Step 1

Remove old style squeegee bracket and replace with new style bracket, pulley and S-hook. Use existing hardware. Pinch close the S-hook to secure pulley to bracket. (Figure 1)

Step 2

Disconnect lift cable and remove L-bracket. Keep hardware. (Figure 2)

Step 3

Position and mount new squeegee lift bracket as shown. (Figure 3)

Step 4

Route cable through new pulley and reconnect to new squeegee lift bracket. (Figure 3)

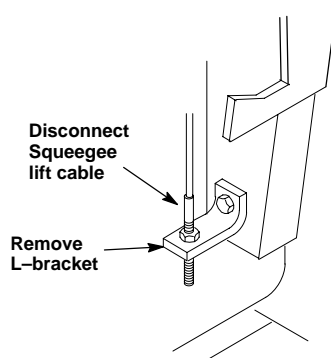
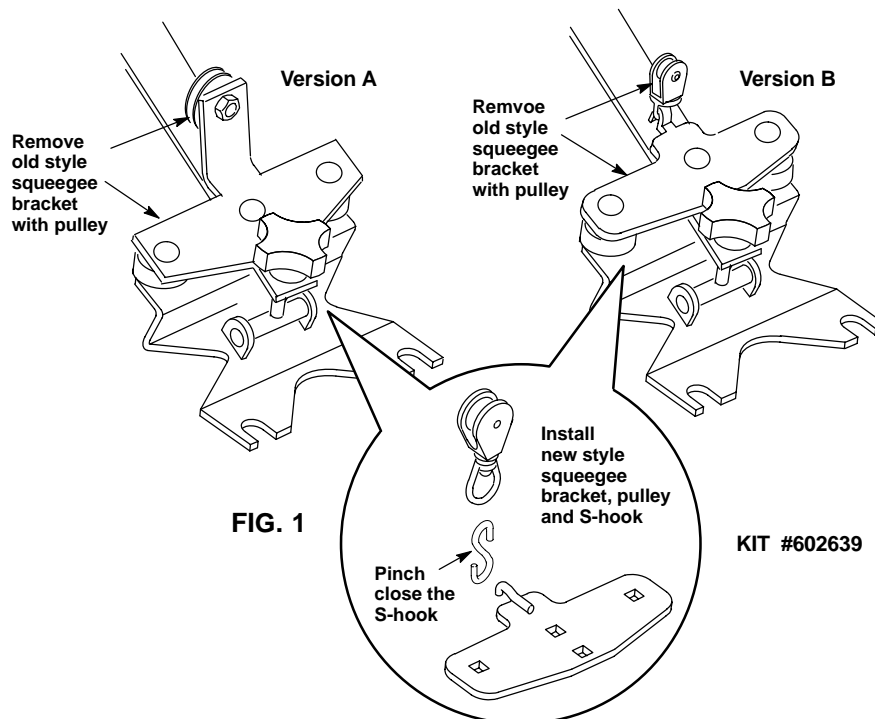


FIG. 2

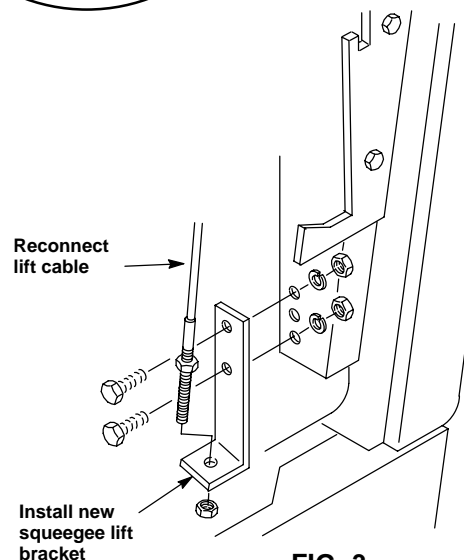


FIG. 3

#602639 KIT CONTENTS

P/N.	Description	Qty.
602828	Bracket, Squeegee Sheave	1
069762361	Pulley	1
611163000	S-Hook	1
603039	Bracket, Squeegee Lift	1
200031436	Screw, M06x16MM	1
200634016	Nut, M06	1
140016	Washer, Lock 1/4"	1