



SQUEEGEE SWIVEL ASSEMBLY RETROFIT KIT

INSTALLATION INSTRUCTIONS: (Installation: One hour)

TOOLS REQUIRED: (2) 9/16" Wrenches, 10mm Wrench, 11mm Wrench, Right Angle Power Drill & 1/2" Drill Bit.

1. Remove pad drivers from scrubber head and rear panel cover.
 2. Remove defective squeegee swivel assembly from machine. To access where squeegee swivel assembly is attached to frame weldment, lower scrubber head to floor and remove the red cap from the scrubber head. Use two 9/16" wrenches to remove defective assembly.
 3. Disconnect squeegee lift cable and remove L-bracket as shown in Figure 1. Keep hardware.
 4. Raise scrubber head. Using a right angle power drill with a 1/2" drill bit, enlarge the two holes in the frame weldment bracket. See Figure 2.
- NOTE:** If you don't have access to a right angle drill, remove batteries and carefully lay machine on its side.
5. Install the new squeegee swivel assembly as shown in Figure 2.
 6. Position and install new squeegee lift bracket as shown in Figure 3.
 7. Route the lift cable through the new pulley and connect to squeegee lift bracket as shown in Figure 3.

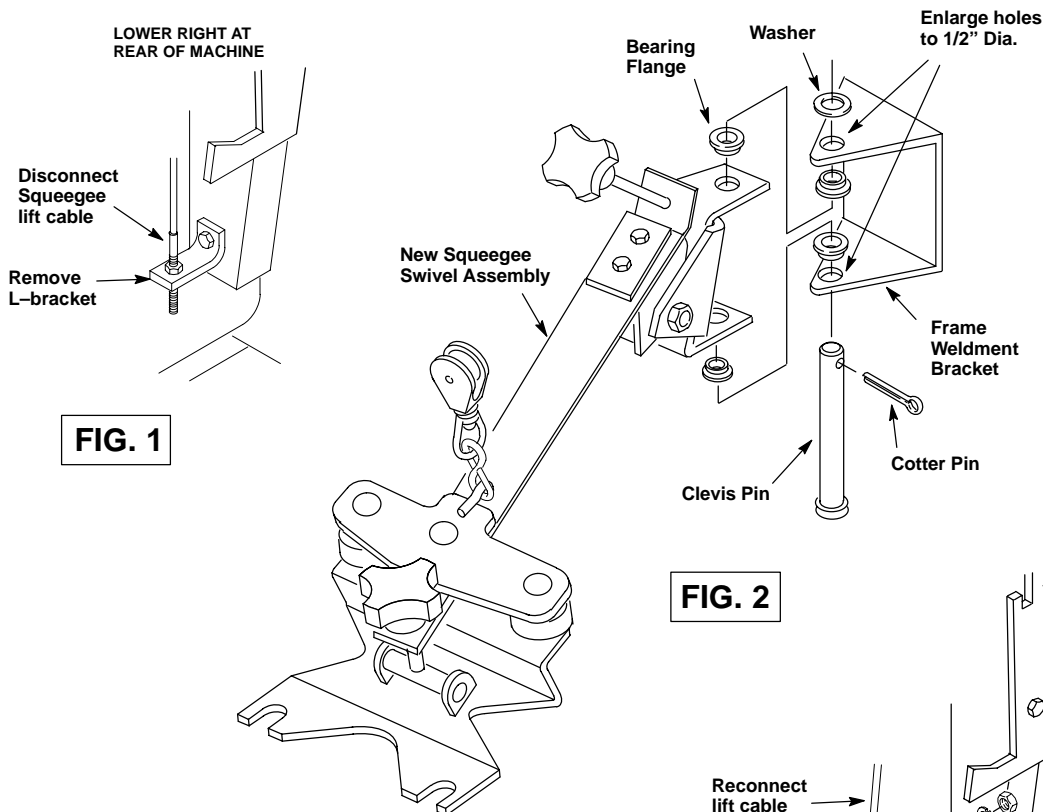


FIG. 1

FIG. 2

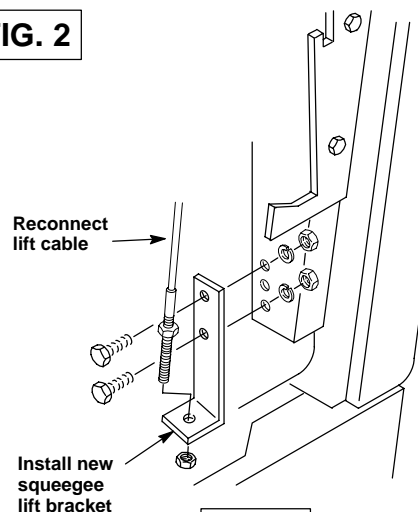


FIG. 3

SQUEEGEE SWIVEL KIT PARTS LIST

P/N.	Description	Qty.
601731	Squeegee Swivel Asm.	1
579144	Washer	1
630095	Bearing, Flange	4
069764065	Pin, Clevis	1
578421	Pin, Cotter	1
200031436	Screw, M06x16MM	1
140016	Washer, Lock 1/4"	1
200634016	Nut, M06	1
603039	Bracket, Squeegee Lift	1