



INSTRUCTION BULLETIN

No. 340725
Machine: 7200 / T15
Published: 07-2015
Rev. 02

NOTE: DO NOT DISCARD the Parts List from the Instruction Bulletin. Place the Parts List in the appropriate place in the machine manual for future reference. Retaining the Parts List will make it easier to reorder individual parts and will save the cost of ordering an entire kit.

NOTE: Numbers in parenthesis () are reference numbers for parts listed in Bill of Materials.

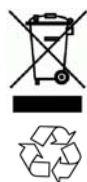
Installation instructions for **kit number 389867 / 389865**

SYNOPSIS:

This kit contains the parts needed to replace the rear squeegee assembly on 7200 / T15 scrubbers.
Please follow step-by-step instructions.

SPECIAL TOOLS / CONSIDERATIONS: NONE

(Estimated time to complete: 15 minutes)



PROTECT THE ENVIRONMENT

Please dispose of packaging materials, used machine components such as batteries and fluids in an environmentally safe way according to local waste disposal regulations.

Always remember to recycle.

PREPARATION:

1. Park the machine on a clean level surface, completely lower the rear squeegee, turn off the machine, set the parking brake, and remove the key.

FOR SAFETY: Before leaving or servicing machine, stop on level surface, turn off machine, set parking brake, and remove key.

INSTALLATION:

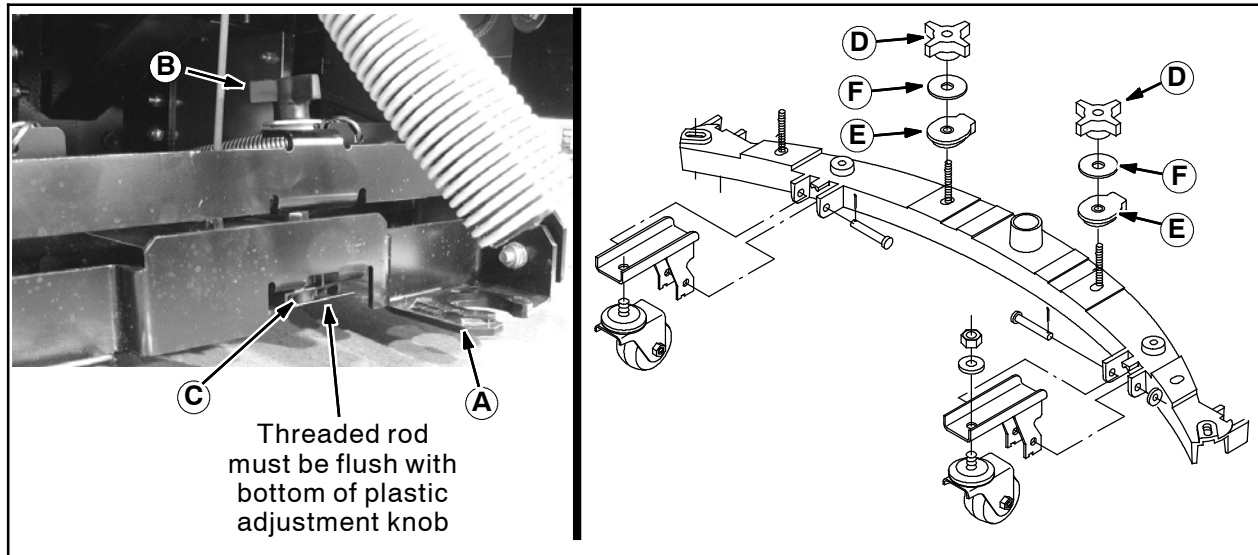


FIG. 1

1. Turn squeegee pivot adjustment knob (B) until the bottom of the threaded rod is flush with bottom of the plastic adjustment block (C). (Fig. 1)
2. Turn the key on for 3-4 seconds to raise the rear squeegee mount bracket (A) enough to allow the squeegee assembly to slide under it and then turn the key off.
3. Disconnect the vacuum hose from the rear squeegee assembly and remove the rear squeegee assembly from the machine,
4. Remove the two knobs (D), the two squeegee mounting rings (E), and the two washers (F) from the squeegee assembly. Set the removed items aside. (Fig. 1)
5. Slide the new rear squeegee assembly (1) under squeegee mount bracket (A).
6. Lift the rear squeegee assembly up onto the squeegee mount bracket and reinstall the two squeegee mounting rings (E), the two washers (F) and the two knobs (D). Hand tighten.

7. Connect the vacuum hose to the rear squeegee assembly. (Fig. 1)

NOTE: Adjust the rear squeegee on the same type of floor that is to be scrubbed. Changes in floor surfaces may require additional adjustments.

8. Turn the key on, press the Squeegee Button to lower the squeegee assembly to the floor, and turn the key to off position.
9. Hold the casters (H) up and adjust the two squeegee caster cams (G) so the casters (H) are approximately 0.5 in. (12 mm) from the floor. (Fig. 2)
10. Turn the key on, lower the squeegee, and drive the machine forward approximately 5 ft. Stop the machine, turn key to off position, and engage the parking brake.

NOTE: The rear squeegee assembly must stay lowered to floor and the vacuum hose must stay attached to the rear squeegee assembly when making adjustments.

NOTE: The machine must be driven forward 5 ft. after each adjustment is made to the rear squeegee assembly.

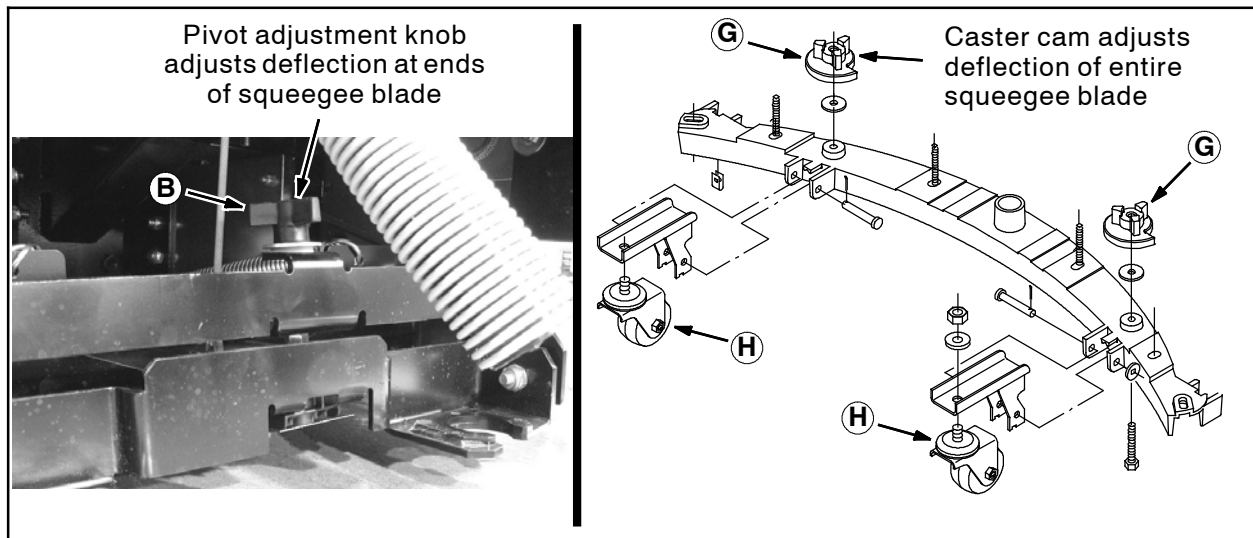


FIG. 2

11. Check the rear squeegee blade deflection. The deflection must be the same across the full length of the rear squeegee blade. If the blade bends more at the ends of the blade, turn the squeegee pivot adjustment knob (B) clockwise 1/4 turn at a time. If the blade bends more at the middle of the blade, turn the knob (B) counterclockwise 1/4 turn at a time. (Fig. 2 / Fig. 3)

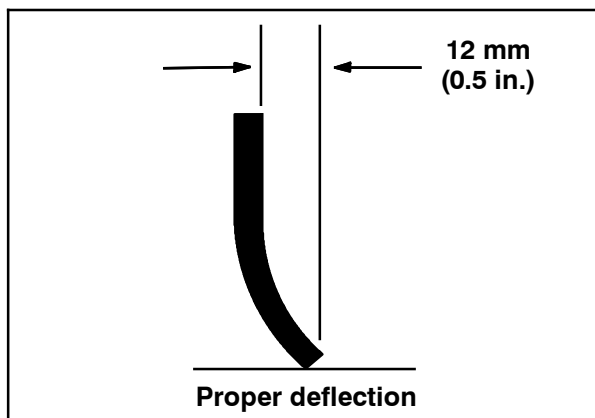


FIG. 3

12. Turn the key on, lower the squeegee, and drive the machine forward approximately 5 ft. Stop the machine, turn key to off position, and engage the parking brake.
13. Check the deflection across the entire length of the squeegee. Turn the two squeegee caster cams (G) clockwise to decrease the blade deflection and counterclockwise to increase the blade deflection. Be sure the cams (G) are tight against squeegee mount bracket when the rear squeegee is in the down position. (Fig. 2 / Fig. 3)
14. Continue adjusting until the deflection is the same across the entire rear squeegee blade.

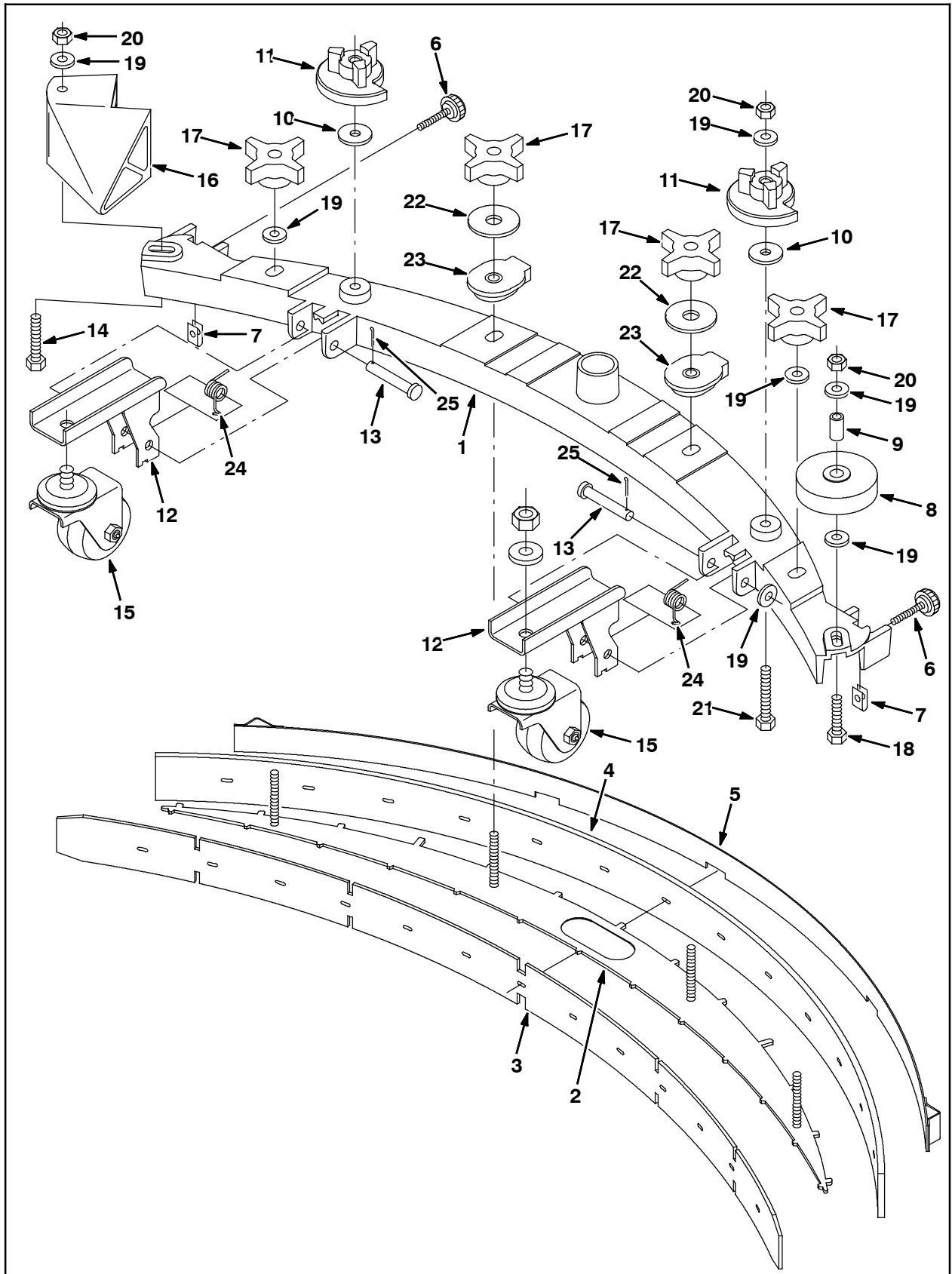


FIG. 4 - Squeegee Assy, 700 mm [7200] - 389867

Bill Of Materials For Squeegee Assy, 700 mm [7200] - 389867

	Ref.	Tennant Part No.	Description	Qty.
▽		389865	Squeegee Assy, 700mm [7200]	1
▲	1	1039488	Frame, Sqge, 93cm [70cm/28]	1
▲	2	398308	Plate, Retainer, Blade, 28.0inch /700mm	1
▲	3	222381	Blade, Sqge, Front, 38.97l Rbr [Linard 700mm]	1
▲	4	222382	Blade, Sqge, Rear, 40.93l Linatex[700mm]	1
▲	5	222378	Strap Wldt, Sqge, 700mm, SS [5700]	1
▲	6	222794	Knob Assy, Rnd, 1.00d 0.66l .25- 20 1.5l	2
▲	7	82138	Nut, Spd, Clip, .25- 20 [.025- .150]	2
▲	8	222066	Wheel, 03.0d 0.88w 0.50b	1
▲	9	222496	Sleeve, P/M, 0.31b 0.50d 0.9l [430ss]	1
▲	10	222268	Washer, Flat, 0.38b 1.25d .12, Neo	2
▲	11	222244	Cam, Adj, Sqge	2
▲	12	223590	Bracket Wldt, Wheel, Sqge	2
▲	13	222260	Pin, Clevis, 0.37d X 2.25l	2
▲	14	222504	Screw, Hex, M8 X 1.25 X 55, SS	1
▲	15	1044952	Caster, Swivel, 2.5d 1.3w, .50- 13 Stem	2
▲	16	223297	Bumper, Sqge	1
▲	17	1057203	Knob, Star, 2.75d 1.1l, 4ear, .31- 18, Thru	4
▲	18	397826	Screw, Btn, M8 X 1.25 X 40, SS	1
▲	19	01685	Washer, Flat, 0.38b 0.88d .08, SS	9
▲	20	08713	Nut, Hex, Lock, M8 X 1.25, NI, SS	4
▲	21	09767	Screw, Hex, M8 X 1.25 X 70, SS	2
▲	22	04414	Washer, Flat, 0.53b 1.88d .12, Stl, Pl	2
▲	23	398304	Ring, Mtg, Sqge, .38l	2
▲	24	222130	Spring, Tors, 0.50id .07wir 07.9coil	2
▲	25	39005	Pin, Cotter, .094 X 0.75	2

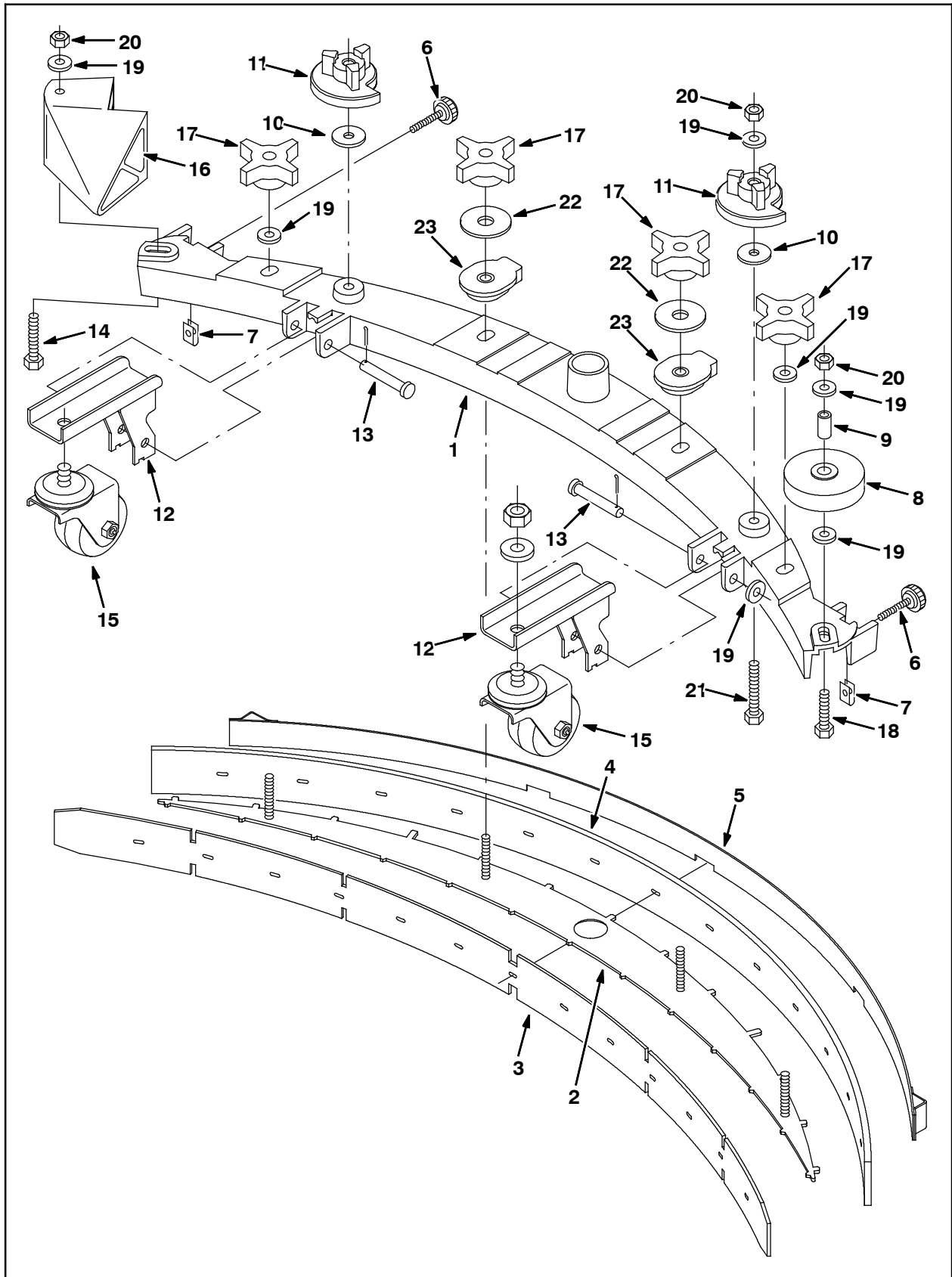


FIG. 5 - Squeegee Assy, 900 mm, Linatex - 389865

Bill Of Materials For Squeegee Assy, 900 mm, Linatex - 389865

	Ref.	Tennant Part No.	Description	Qty.
▽		389865	Squeegee Assy, 900 mm, Linatex	1
▲	1	1028029	Frame, Sqge 114cm [90cm/36]	1
▲	2	1036417	Plate, Retainer, Blade, 36.0inch /900mm	1
▲	3	223606	Blade, Sqge, Front, 47.41l [Linard 900mm]	1
▲	4	222415	Blade, Sqge, Rear, 49.37l Linatex[900mm]	1
▲	5	222417	Retainer Wldt, Sqge, 900mm, SS [5700]	1
▲	6	222794	Knob Assy, Rnd, 1.00d 0.66l .25- 20 1.5l	2
▲	7	82138	Nut, Spd, Clip, .25- 20 [.025- .150]	2
▲	8	222066	Wheel, 03.0d 0.88w 0.50b	1
▲	9	222496	Sleeve, P/M, 0.31b 0.50d 0.9l [430ss]	1
▲	10	222268	Washer, Flat, 0.38b 1.25d .12, Neo	2
▲	11	222244	Cam, Adj, Sqge	2
▲	12	223590	Bracket Wldt, Wheel, Sqge	2
▲	13	222260	Pin, Clevis, 0.37d X 2.25l	2
▲	14	49694	Screw, Hex, M8 X 1.25 X 50, SS	1
▲	15	223593	Caster, Swivel, 2.5d 1.3w, .50- 13 Stem	2
▲	16	223297	Bumper, Sqge	1
▲	17	370100	Knob, Star, 2.80d 4ear 1.1l .31- 18, Pyp	4
▲	18	09026	Screw, Hex, M8 X 1.25 X 40, SS	1
▲	19	01685	Washer, Flat, 0.38b 0.88d .08, SS	9
▲	20	08713	Nut, Hex, Lock, M8 X 1.25, NI, SS	4
▲	21	09767	Screw, Hex, M8 X 1.25 X 70, SS	2
▲	22	04414	Washer, Flat, 0.53b 1.88d .12, Stl, Pl	2
▲	23	398304	Ring, Mtg, Sqge, .38l	2
▲	24	222130	Spring, Tors, 0.50id .07wir 07.9coil	2
▲	25	39005	Pin, Cotter, .094 X 0.75	2

TENNANT COMPANY
P. O. Box 1452
Minneapolis, MN 55440-1452