



# INSTRUCTION BULLETIN

**No. 340676**

**Machine: 510E/530E, 140/141,**

**186/1186, Scout 37B**

**Published: 03-2004**

**Rev. 00**

**NOTE: DO NOT DISCARD the Parts List from the Instruction Bulletin. Place the Parts List in the appropriate place in your machine manual for future reference. Retaining the Parts List will make it easier to reorder individual parts and will save you the cost of ordering an entire kit.**

*NOTE: Numbers in parenthesis ( ) are reference numbers for parts listed in Bill of Materials.*

Installation instructions for **kit number 374227**

## **SYNOPSIS / PROBLEM:**

This kit contains the parts needed to install a new ignition switch on the model 510E/530E, 140/141, 186/1186, and Scout 37B sweepers.

Please follow step-by-step instructions.

## **SPECIAL TOOLS / CONSIDERATIONS: NONE**

(Estimated time to complete: 1 hour)

1. Stop the machine on a clean level surface.

**FOR SAFETY: Before leaving or servicing machine, stop on level surface and set parking brake (if applicable). Turn off machine and remove key.**

2. Disconnect battery cables from machine.



**WARNING: Always disconnect battery cables from machine before working on electrical components.**

3. Remove old switch assembly (P/N 31203) from the panel assembly.
4. Measure and mark the the area around the ignition switch hole required for the new switch. Refer to Fig. 1 for measurements.
5. Grind the hole for the ignition switch to the measurements made in the previous step.

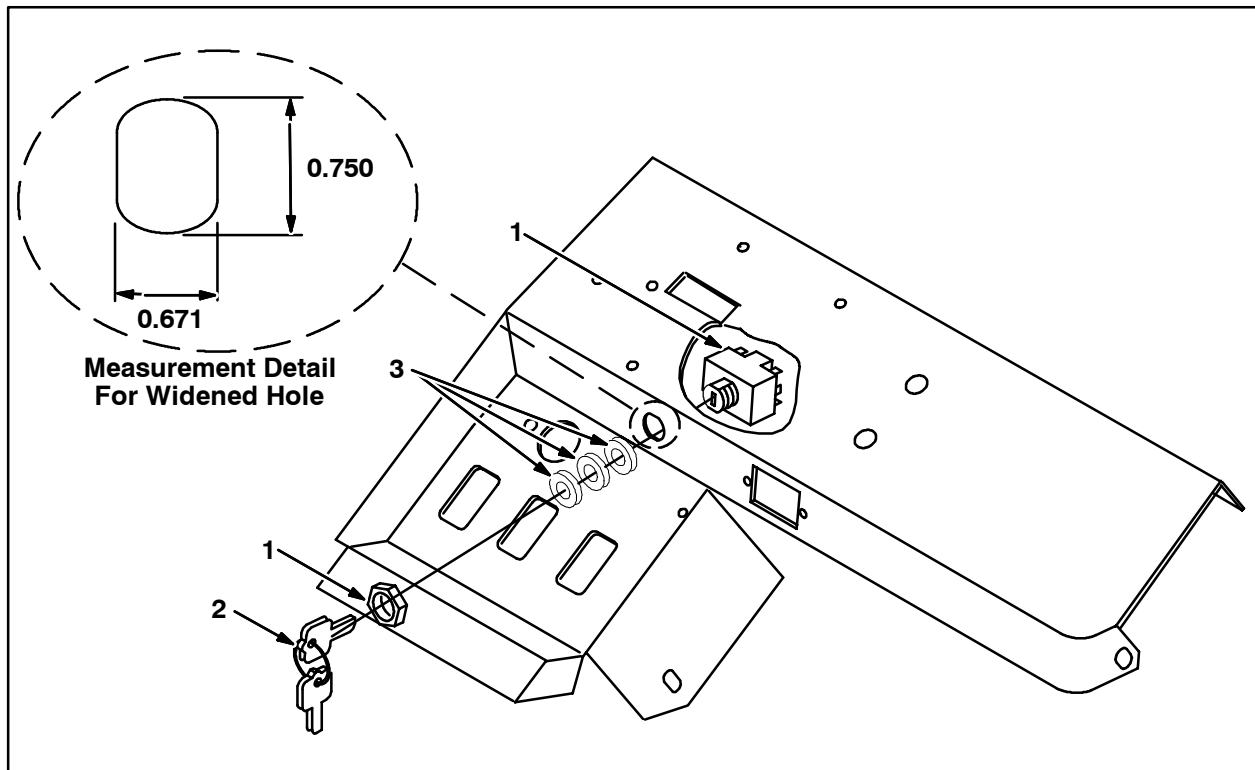
6. Install the new ignition switch (1) onto the panel assembly. Refer to Fig.1 for locations of parts required for installing new switch.

Position new ignition switch (1) into the newly widened hole in the panel assembly.

If necessary, slide flatwashers (3) onto new switch to provide space between the new longer switch and other components.

Thread and tighten the ignition switch nut onto the new ignition switch (1).

7. Reconnect wires and cables removed from the old switch to the new switch.
8. Reconnect battery cables.



**FIG. 1**  
**BILL OF MATERIALS FOR IGNITION KEY SWITCH KIT 374227**

	Ref.	Tennant Part No.	Description	Qty.
▽	1	222282	SWITCH, KEY, 12 VDC A SPDT	1
▲	2	222684	KEY, SET OF TWO	1
	3	39350	WASHER, FLAT, 0.75 SAE	3

TENNANT COMPANY  
P. O. Box 1452  
Minneapolis, MN 55440-1452