



INSTRUCTION BULLETIN

No. 340650
Machine: 6650
Published: 05-2004
Rev. 00

NOTE: DO NOT DISCARD the Parts List from the Instruction Bulletin. Place the Parts List in the appropriate place in the machine manual for future reference. Retaining the Parts List will make it easier to reorder individual parts and will save the cost of ordering an entire kit.

NOTE: Numbers in parenthesis () are reference numbers for parts listed in Bill of Materials.

Installation instructions for **kit number 377294**

DESCRIPTION:

This kit contains the parts needed to replace the control panel faceplate/overlay on the 6650 model sweepers.

Please follow step-by-step instructions.

SPECIAL TOOLS / CONSIDERATIONS: None

(Estimated time to complete: 1/2 hour)

PREPARATION:

(Refer to FIG. 1 and 2)

FOR SAFETY: Before leaving or servicing machine, stop on level surface and set parking brake. Then turn off machine and remove key.

1. Disconnect battery cables from machine.



WARNING: Always disconnect battery cables from machine before working on electrical components.

2. Remove the grounding strap from the plastic package.
3. Unwrap the first two folds of the band and wrap the exposed adhesive side firmly around either wrist.
4. Unroll the rest of the band and peel the liner from the copper foil at the opposite end.
5. Attach the copper foil to a convenient and exposed electrical ground on the machine frame.

INSTALLATION:

(Refer to FIG. 1 unless otherwise noted)

1. Remove and set aside the eight pan screws and nylon washers from the instrument panel.
2. Raise the instrument panel and disconnect the plug from the back side of the control panel.
3. Set the panel face down on a clean flat surface.
4. Remove the screws from the back side of the control panel cover plate and set the plate aside.
5. Remove and set aside six hex studs with nylon washers (A) and three nylon nuts (B) securing the circuit board to the overlay/faceplate. (Refer to FIG. 2)

6. Remove the old overlay/faceplate from the circuit board.
7. Secure the new overlay/faceplate (1) into place, with the hex studs, nylon washers (A) and nylon nuts (B) removed in Step 5. (Refer to FIG. 2)
8. Reconnect the plug to the back side of the control panel.
9. Place the control panel back into position.
10. Use the eight pan screws and nylon washers to secure the instrument panel into place.

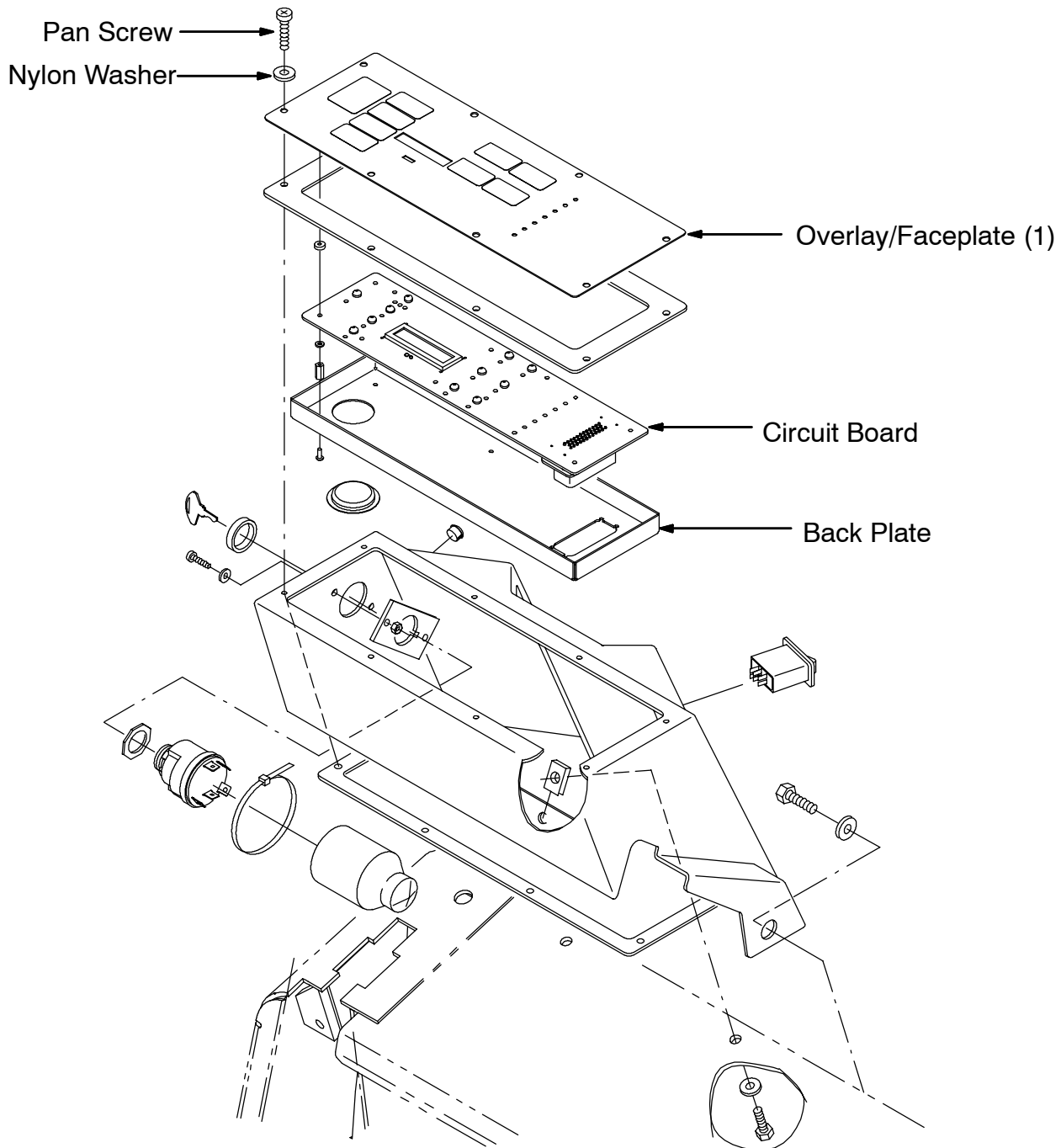


FIG. 1 - Overlay Replacement

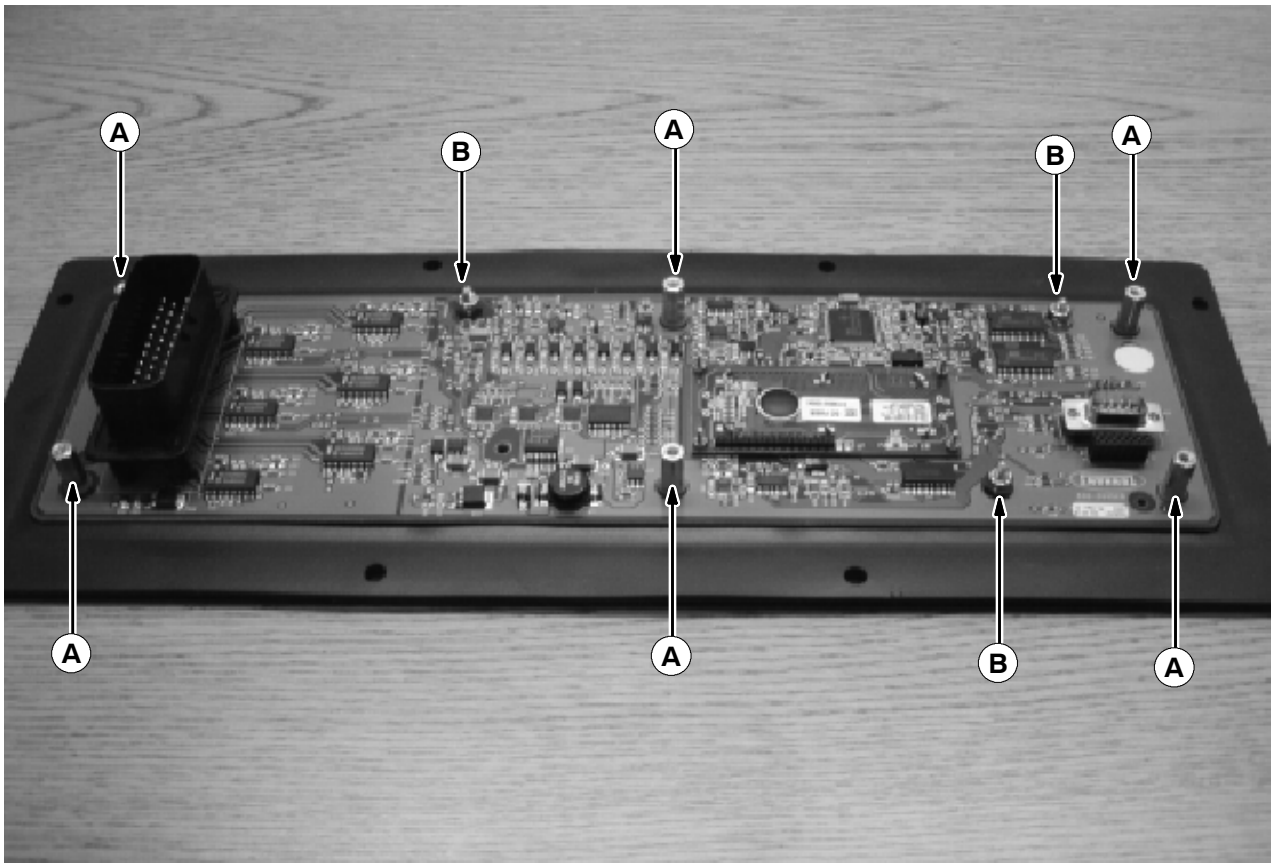


FIG. 2 - Overlay/Circuit Board Mounting Hardware

BILL OF MATERIALS FOR OVERLAY REPLACEMENT KIT 377294

Ref.	TENNANT Part No.	Description	Qty.
1	1010463	Panel, overlay, replmt [6650]	1
2	27964	Strap, static ground, disposable	1

TENNANT COMPANY
P. O. Box 1452
Minneapolis, MN 55440-1452