



INSTRUCTION BULLETIN

No. 340637
Machine: 6100E
Published: 10-2005
Rev. 01

NOTE: DO NOT DISCARD the Parts List from the Instruction Bulletin. Place the Parts List in the appropriate place in the machine manual for future reference. Retaining the Parts List will make it easier to reorder individual parts and will save the cost of ordering an entire kit.

NOTE: Numbers in parenthesis () are reference numbers for parts listed in Bill of Materials.

Installation instructions for **kit number 384499**

SYNOPSIS:

This kit contains the parts needed to install a backup alarm kit on the 6100E sweeper.
Please follow step-by-step instructions.

SPECIAL TOOLS / CONSIDERATIONS: None

(Estimated time to complete: 1 hour)

PREPARATION:

1. Park the machine on a clean level surface.
2. Turn off the machine, remove the key, and set the parking brake.

FOR SAFETY: Before leaving or servicing machine, stop on level surface, set parking brake, turn off machine, and remove key.

3. Disconnect battery cables from batteries.



WARNING: Always disconnect battery cables from machine before working on electrical components.

BRACKET INSTALLATION:

NOTE: If machine is not equipped with the optional vacuum wand, mount backup alarm with pedestal.

1. Use hex screws (4) and flange nuts (5) to mount backup alarm (1) to backup alarm bracket (3). Refer to Fig. 1.
2. Connect backup/warning harness (18) to the backup alarm (1) and main wiring harness. Refer to Fig. 1, Fig. 2, and Fig. 4.
3. Mount the backup alarm bracket (3) to the vacuum wand box. Refer to Fig. 1.
4. Remove the instrument console.

5. Install the circuit breaker (9) and the circuit breaker dome (10) onto the instrument console. Refer to Fig. 1.
6. Connect the main wire harness to the circuit breaker (9).
7. Reinstall the instrument console.
8. Remove the propel pedal from the machine.
9. Use two pan screws (13) and lock washers (15) to attach the switch (17) to the switch adapter plate (12). Refer to Fig. 1.
10. Route the cable from the switch (17) down through the hole in the pedal base and through the machine floorboard. Refer to Fig. 1.
11. Connect the cable from the switch (17) to the wire harness. Refer to Fig. 2 and Fig. 3.
12. Use two pan screws (14), lock washers (15), and spacers (16) to fasten the mounting plate (12) to the propel pedal. Refer to Fig. 1.
13. Reinstall the propel pedal onto the machine.
14. Loosen the screws installed in Step 9 to adjust the position of the switch so it operates as the pedal is pressed to the rear and releases as the pedal is released to the neutral position.

15. Secure all wiring.

16. Reinstall the propel pedal onto the machine.
17. Remove left side panel. Refer to Fig. 1.
18. Install relay (6) with hex screw (7) and interior lock washer (8). Refer to Fig. 1.

19. Replace the left side panel.
20. Reconnect the battery cables to the batteries.
21. Turn on machine and check newly installed equipment for proper operation.

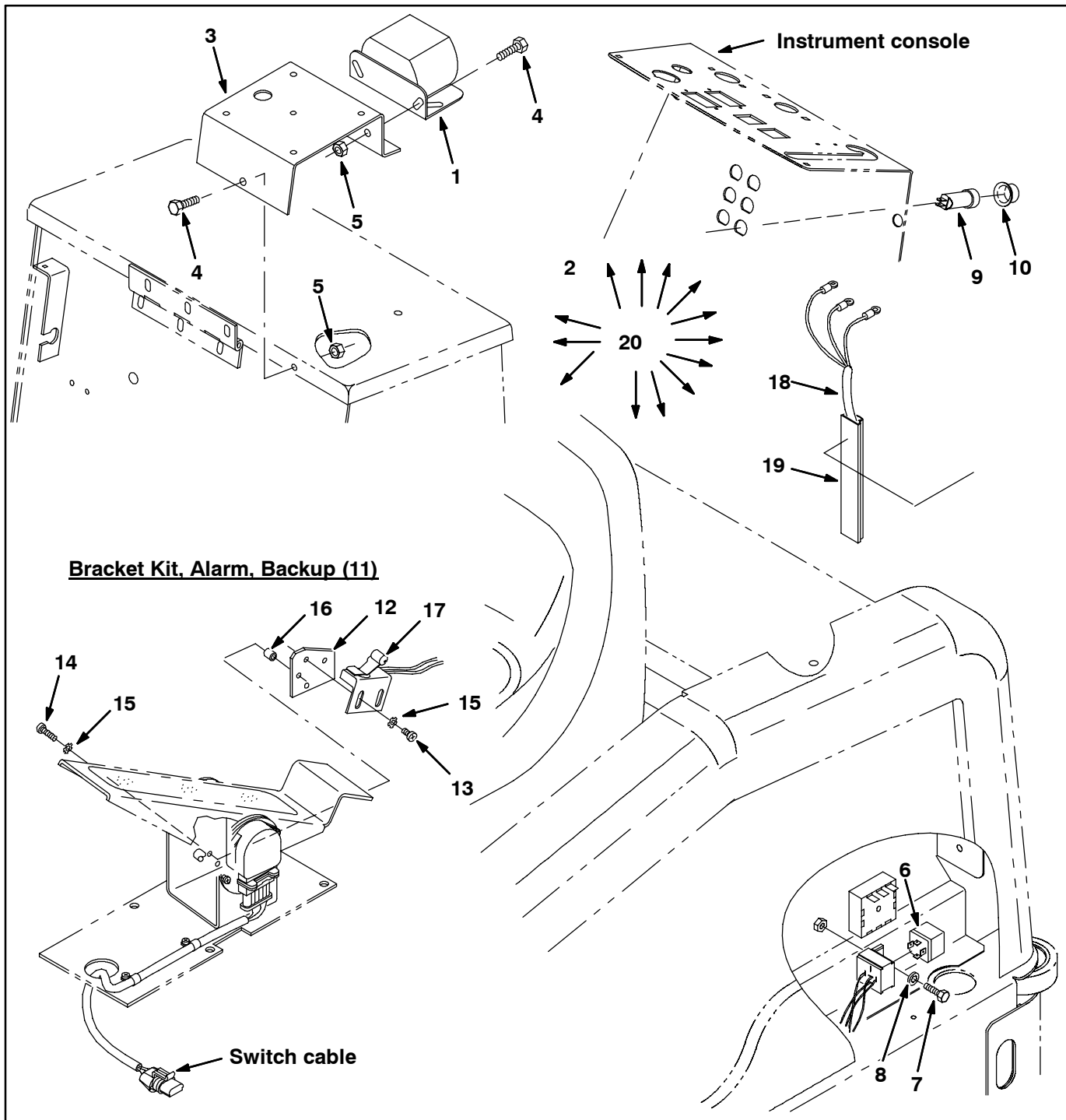


FIG. 1

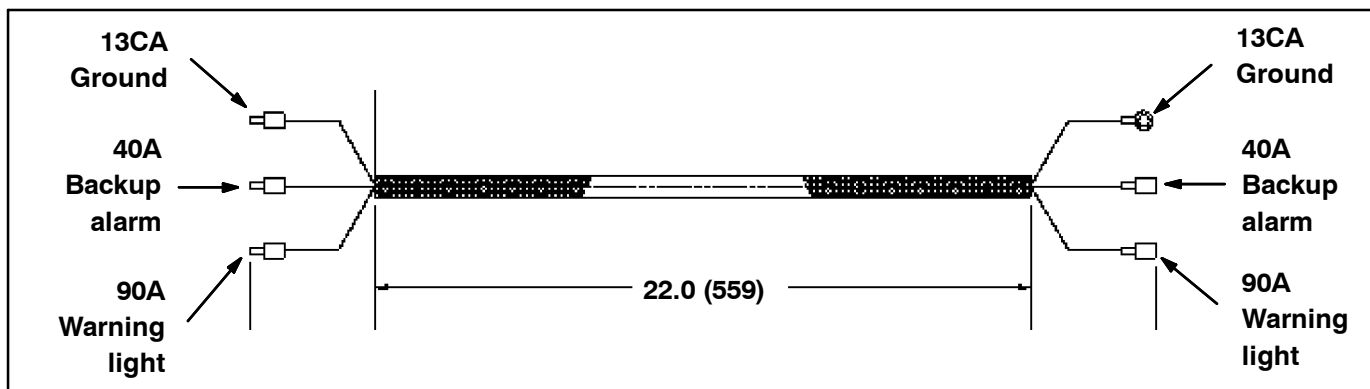


FIG. 2

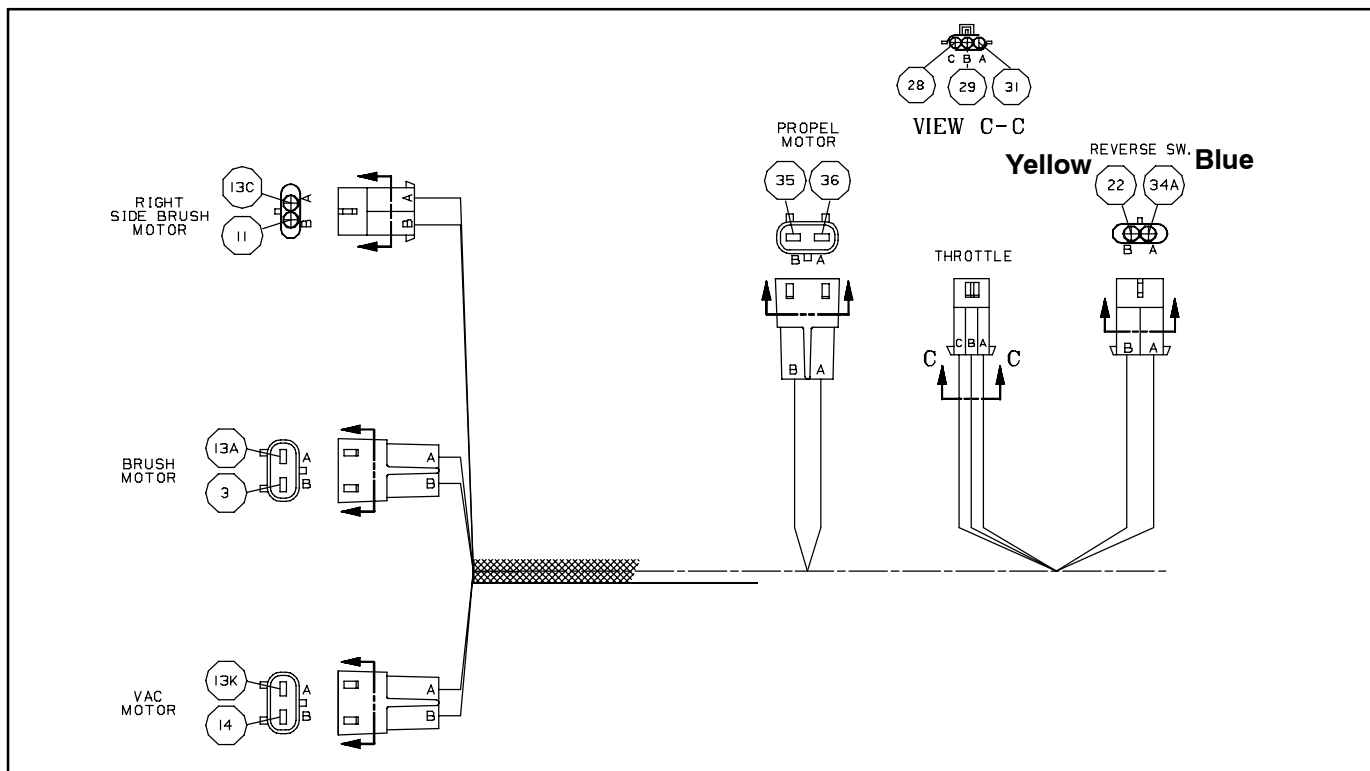


FIG. 3

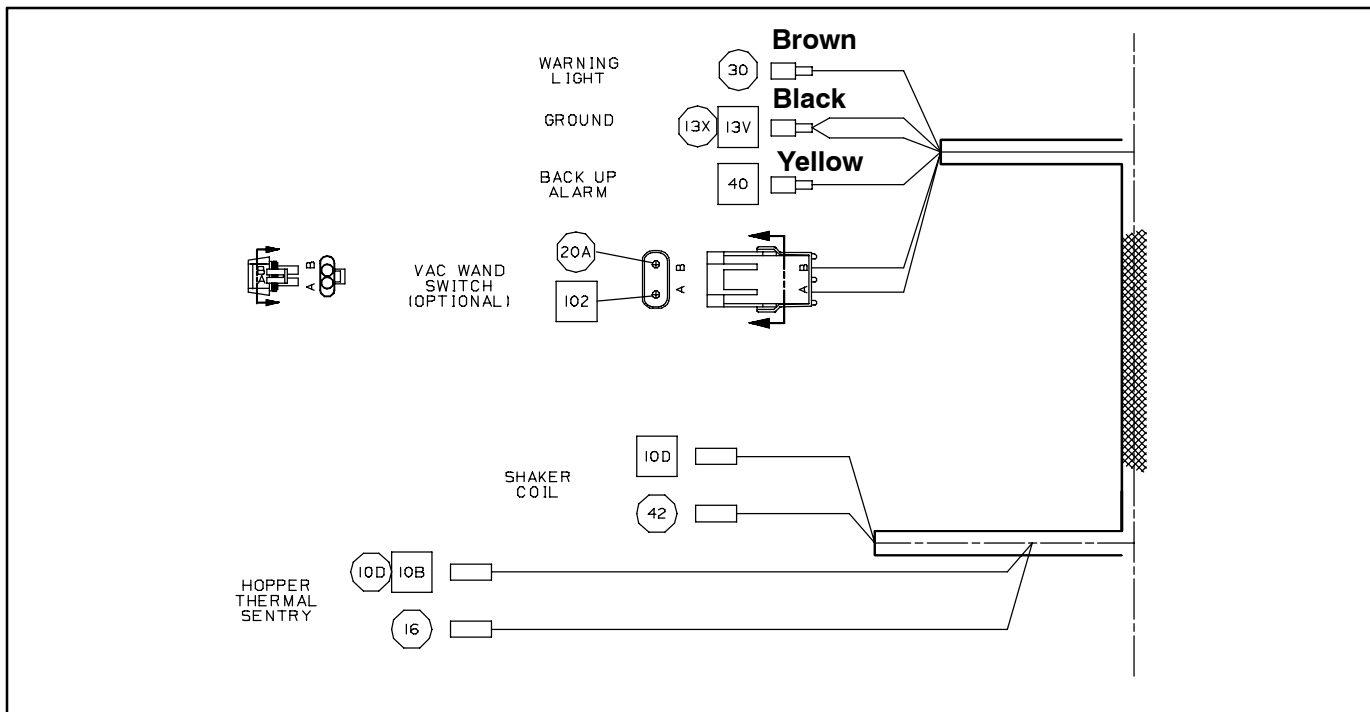


FIG. 4

Bill of Materials for Alarm Kit, Backup, Wand [6100E]-384499

Ref.	Tennant Part No.	Description	Qty.
▽	384499	Alarm Kit, Backup, Wand [6100E]	1
▲ 1	83254	Horn Assy, Backup, 12-48VDC, 82-100DBA	1
▲ 2	39349	Washer, Flat, 0.31 SAE	2
▲ 3	83531	Bracket, Flsh Light/Alarm Backup	1
▲ 4	16735	Screw, Hex, M8 X 1.25 X 15, 8.8	2
▲ 5	07791	Nut, Hex, Flng, M8 X 1.25	2
▲ 6	398526	Relay, 36VDC, 05A, SPDT N/O [Greenwich]	1
▲ 7	12312	Screw, Hex, M5 X 0.8 X 12, 8.8	3
▲ 8	32980	Washer, Lock, Int, #10	3
▲ 9	57803	Circuitbreaker, 15.0A, Resettable	1
▲ 10	57751	Boot, Dome, .72ID .72L, Clear	1
▲▽ 11	81509	Bracket Kit, Alarm, Backup	1
▲▲ 12	1020304	Bracket, Adapter, Switch	1
▲▲ 13	06931	Screw, Pan, M5 X 0.8 X 6, 4.8	2
▲▲ 14	06934	Screw, Pan, M5 X 0.8 X 20, 4.8	2
▲▲ 15	07514	Washer, Lock, Int, #10, SS	4
▲▲ 16	1021184	Spacer, Plstc, 0.19B 0.38D 0.38L, Nyl	2
▲ 17	59965	Switch, Snap Actn, 12VDC 15A No Rlr	1
▲ 18	81946	Harness, Warning/Backup, 36VDC	1
▲ 19	72114	Duct, Vyl, 0.40 X 0.75 0.25D 06.0L	1
▲ 20	19066	Washer, Flat, #10	2

TENNANT COMPANY
P. O. Box 1452
Minneapolis, MN 55440-1452