



# INSTRUCTION BULLETIN

No. 340598  
Machine: 7300, 8300  
Published: 2-03  
Rev. 02

**NOTE: DO NOT DISCARD the Parts List from the Instruction Bulletin. Place the Parts List in the appropriate place in your machine manual for future reference. Retaining the Parts List will make it easier to reorder individual parts and will save you the cost of ordering an entire kit.**

*NOTE: Numbers in parenthesis ( ) are reference numbers for parts listed in Bill of Materials.*

Installation instructions for **kit number 374241**

## DESCRIPTION:

The current side squeegees have a tendency to dig into the floor surface. This kit contains the parts needed to install a new side squeegee kit that will help keep the side squeegees level on the model 7300 scrubbers and 8300 sweeper/scrubbers with disk or cylindrical scrub heads.

Please follow step-by-step instructions.

## SPECIAL TOOLS / CONSIDERATIONS: Hand drill, 3/8 drill bit, utility knife

(Estimated time to complete: 1 hour)

## PREPARATION:

(Refer to FIG. 1 thru 3)

1. Drive the machine to a clean, level surface.
2. Remove the squeegee blades from both sides of the machine. Set the blades, point guides, clevis pins and cotter pins aside.
3. Remove the squeegee frames from both sides of the machine. Set the frames, bushings, sleeves and washers aside.
4. Lower the scrubhead and turn the machine power off when the scrubhead is down in the scrubbing position.

**FOR SAFETY: Before leaving or servicing machine, stop on level surface and set parking brake. Then turn off machine and remove key.**

## MACHINE INSTALLATION:

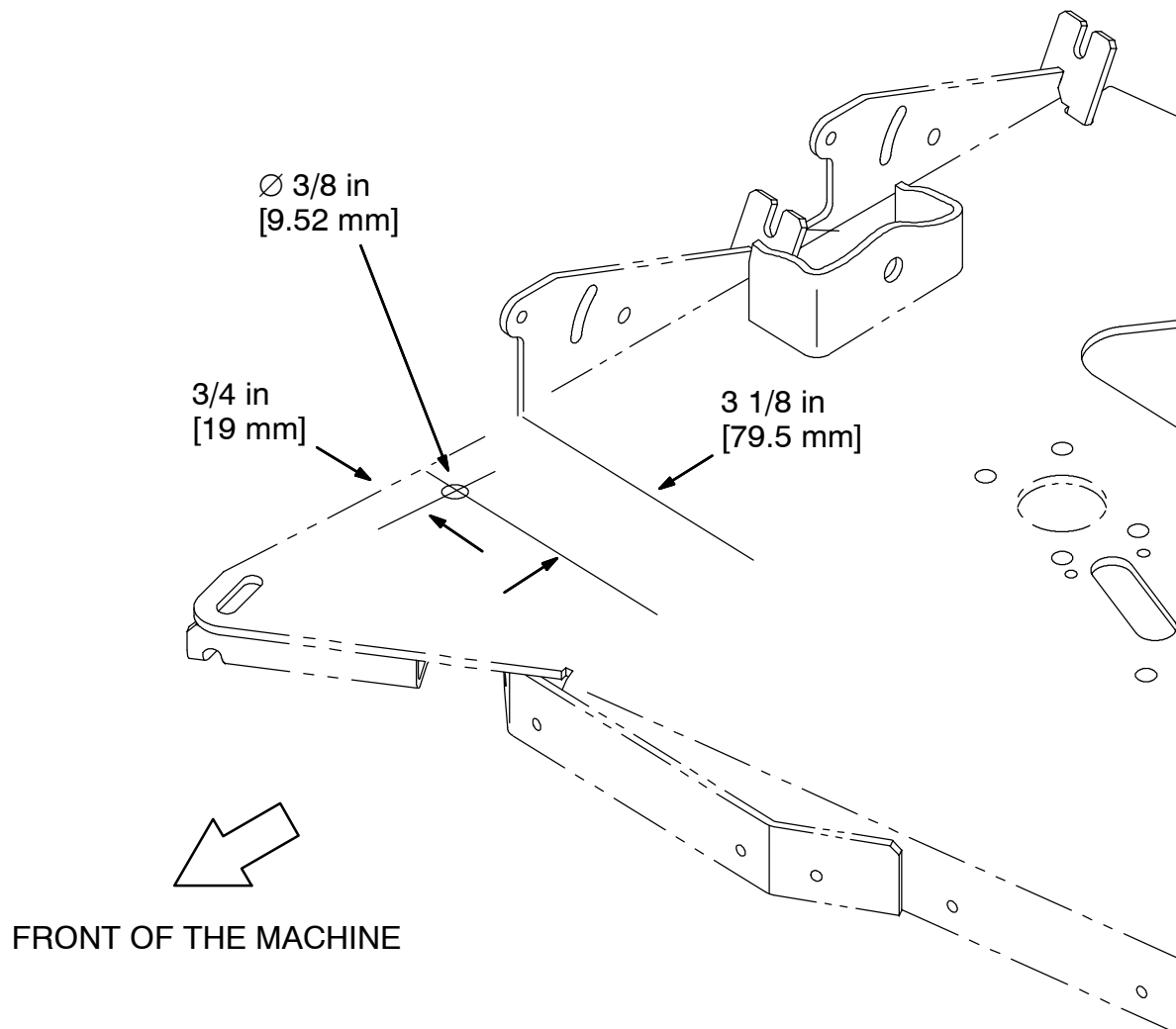
**Disk Machines Only (Refer to FIG. 1 thru 3)**

1. Using the dimensions in figure 1, mark and drill a 3/8 in hole in the top of the scrubhead frame on the right hand side of the machine only. (Refer to FIG. 1)
2. Mount the new spring bracket (1) in the 3/8 mounting hole with two flange nuts (2). One flange nut (2) on top of the scrubhead frame, and one flange nut (2) below, to secure the spring bracket (1). Orient the spring bracket (1) so the head of the spring bracket (1) tilts towards the front of the machine and the base of the head is 1 3/8 in [35 mm] from the scrubhead frame. Tighten the flange nuts to secure the spring bracket. (Refer to FIG. 2)
3. Install the eyebolt (3) in the spring bracket with two hex nuts (4). (Refer to FIG. 2)
4. Replace old clevis pin 76653 with the new, longer clevis pin (6). (Refer to FIG. 2)

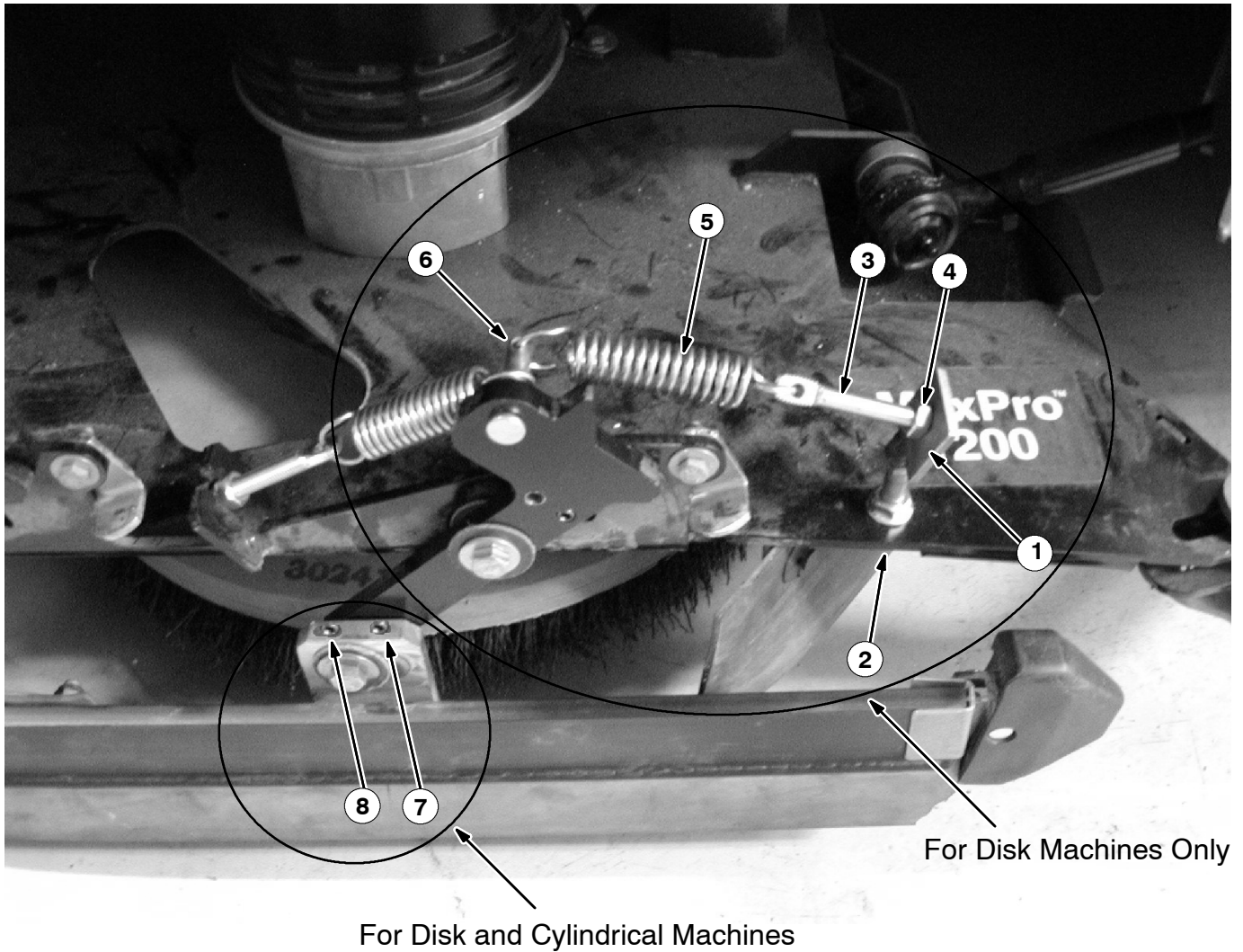
5. Link the new eyebolt (3) to the new clevis pin (6) with the new extension spring (5).  
(Refer to FIG. 2)

**Disk and Cylindrical Brush Machines (Refer to FIG. 1 thru 3)**

6. Using the hole locations shown in figure 3, mark two 3/16 hole locations on the centerline of the right and left hand squeegee frames. (Refer to FIG. 3)
7. Drill the two 3/16 holes in the top of the right hand and left hand squeegee frames with a drill press or hand drill. (Refer to FIG. 3)
8. Install the 1 in roll pins (7) in the 3/16 rear hole on each squeegee frame. (Refer to FIG. 2)
9. Install the 3/4 in roll pins (8) in the 3/16 front hole on each squeegee frame. (Refer to FIG. 2)
10. Cut the front corner of the right hand squeegee blade back at a 45° angle from the top of the squeegee blade.
11. Turn the machine power on and raise the scrubhead. Turn the machine power off.
12. Mount the reworked squeegee frames back on the machine with the set aside hardware bushings and sleeves. (Refer to FIG. 2)
13. Replace the squeegee blades back on the squeegee frames with set aside point guides, clevis pins and cotter pins. (Refer to FIG. 2)
14. Turn the machine power on and check the squeegees for proper operation.



**FIG. 1 - Right Hand Side Scrubhead Frame Rework**

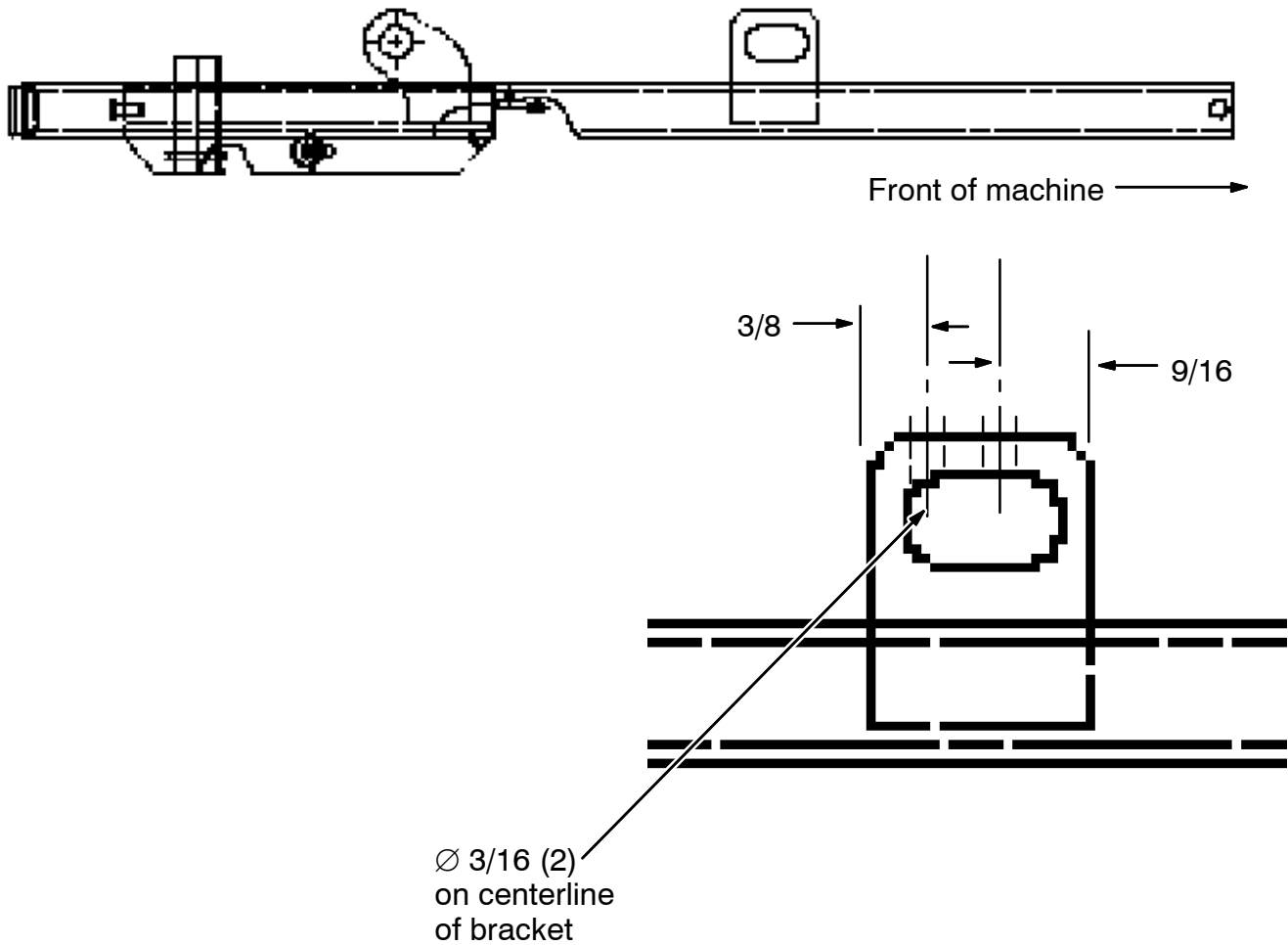


**FIG. 2 - Side Squeegee Kit Installation (Disk Machines Only)**

**BILL OF MATERIALS FOR SIDE SQUEEGEE KIT 374241**

Ref.	TENNANT Part No.	Description	Qty.
1	1007632	Bracket wldt, mtg, spring	1
2	27980	Nut, hex, flng, 0.38-16	2
3	386088	Bolt, eye, M8 X 1.25, 2.75L	1
4	07786	Nut, hex, std, M08 X 1.25, Ss	2
5	87816	Spring, ext, 0.75 OD X 0.09 wir, 2.5L	1
6	29558	Pin, clevis, 0.37D X 1.50L	1
7	28144	Pin, roll, 180 D X 1.00L, 0.187/0.192	2
8	28270	Pin, roll, 180 D X 0.75L, 0.187/0.192	2

Right hand side squeegee frame



\*Reverse the hole locations for the left hand side squeegee frame.

**FIG. 3 - Squeegee Frame Roll Pin Hole Locations (Disk and Cylindrical Machines)**

TENNANT COMPANY  
P. O. Box 1452  
Minneapolis, MN 55440-1452