



INSTRUCTION BULLETIN

No. 340577
Machine: Centurion™
Published: 7-02
Rev. 00

NOTE: DO NOT DISCARD the Parts List from the Instruction Bulletin. Place the Parts List in the appropriate place in your machine manual for future reference. Retaining the Parts List will make it easier to reorder individual parts and will save you the cost of ordering an entire kit.

NOTE: Numbers in parenthesis () are reference numbers for parts listed in Bill of Materials.

Installation instructions for the safety leg stop installation **kit 396780**.

DESCRIPTION:

This kit contains the parts needed to install a safety leg stop on the model Centurion™ sweeper.

Please follow step-by-step instructions.

SPECIAL TOOLS / CONSIDERATIONS: Hand drill, 9.5 mm (3/8 in) dia. drill bit

(Estimated time to complete: 1 hour)

PREPARATION:

(Refer to FIG. 1, 2 and 3)

1. Move the machine to a level surface and set the machine parking brake.

FOR SAFETY: Before leaving or servicing machine, stop on level surface and set parking brake. Then turn off machine and remove key.

2. Raise the debris hopper and engage the hopper support arms. Turn the machine off.



WARNING: Raised hopper may fall. Engage hopper support bar.

INSTALLATION:

(Refer to FIG. 1, 2 and 3)

1. Locate the front safety leg supports on both sides of the hopper lift frame. (Refer to FIG. 1)
2. Using the dimensions shown in FIG 1, mark and drill two 9.5 mm (3/8 in) dia. holes in the safety leg support. (Refer to FIG. 2)
3. Mount the support block (1) to the safety leg support with two M8 screws (2). (Refer to FIG. 3)
4. Repeat the second support block (2) installation on the second safety leg support on the opposite side of the hopper lift. (Refer to FIG. 1, 2 and 3)
5. Start the machine and raise the debris hopper to full height.
6. Rotate the hopper support arms back, to rest against the new support blocks.
7. Lower the debris hopper and turn the machine off.



WARNING: Lift arm pinch point. Stay clear of hopper lift arms.

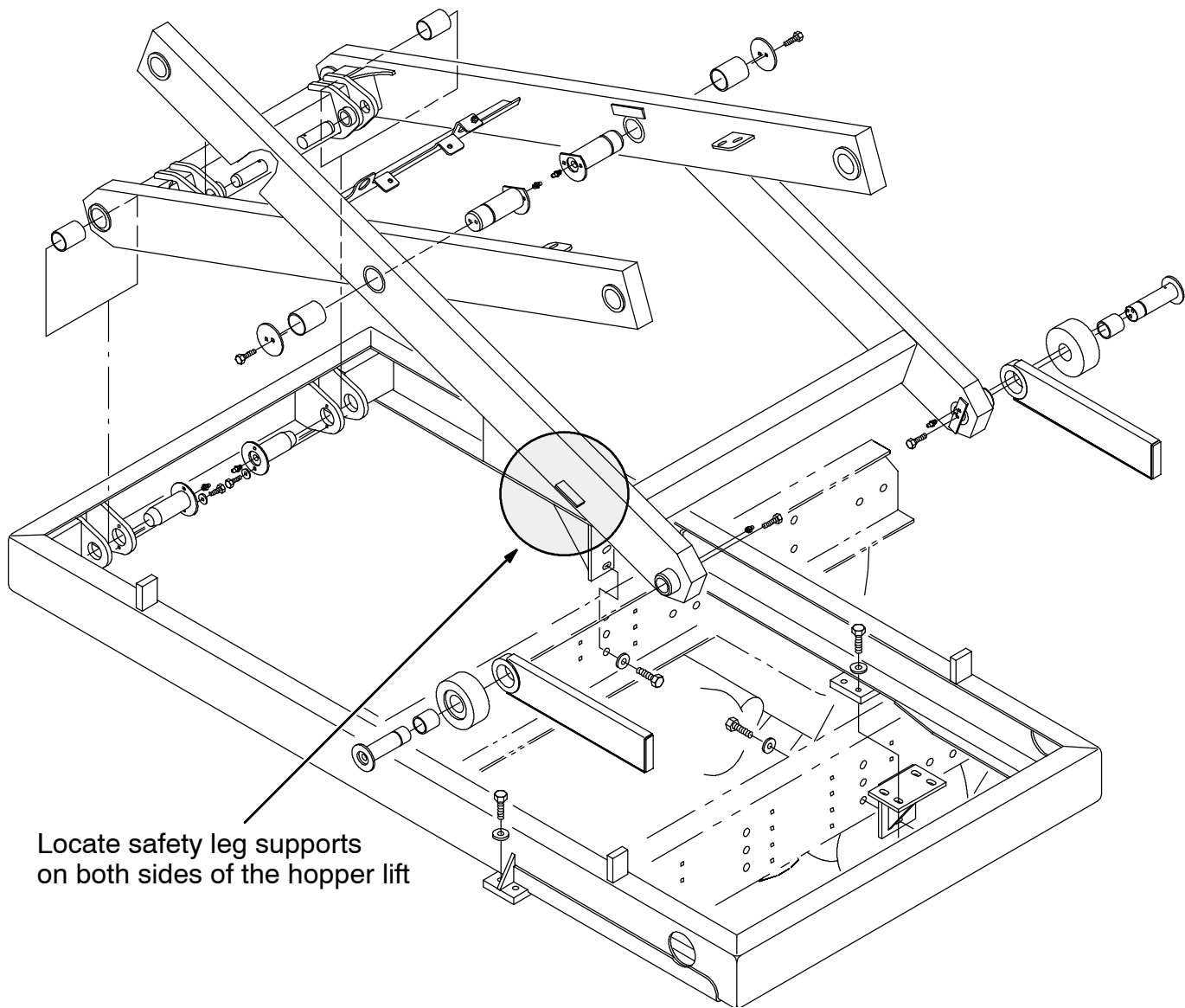


FIG. 1 - Safety Leg Support Location

BILL OF MATERIALS FOR SAFETY LEG STOP KIT

Ref.	TENNANT Part No.	Description	Qty.
1	396771	Block, support, safety leg	2
2	11329	Screw, hex, M8-1.25 X 16	4

TENNANT COMPANY
P. O. Box 1452
Minneapolis, MN 55440-1452

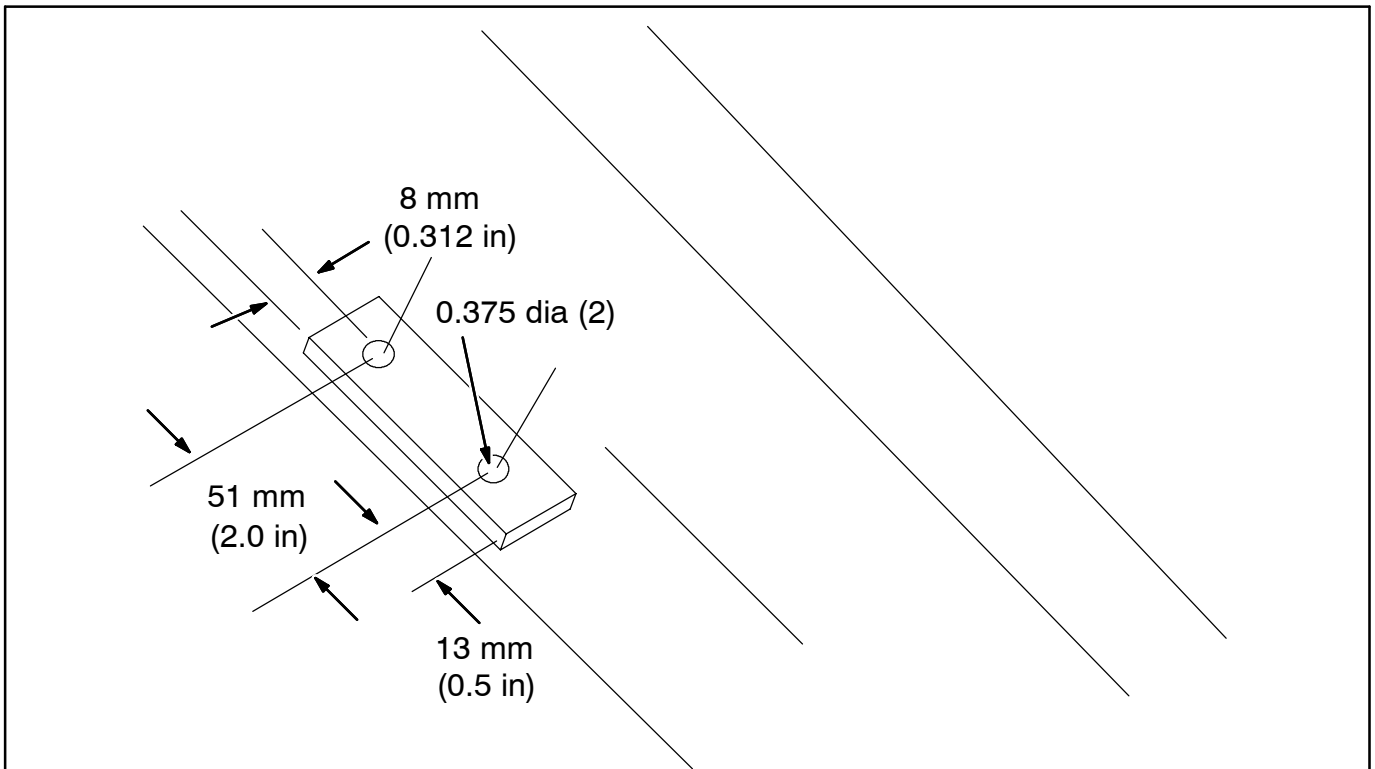


FIG. 2 - Safety Leg Support Rework

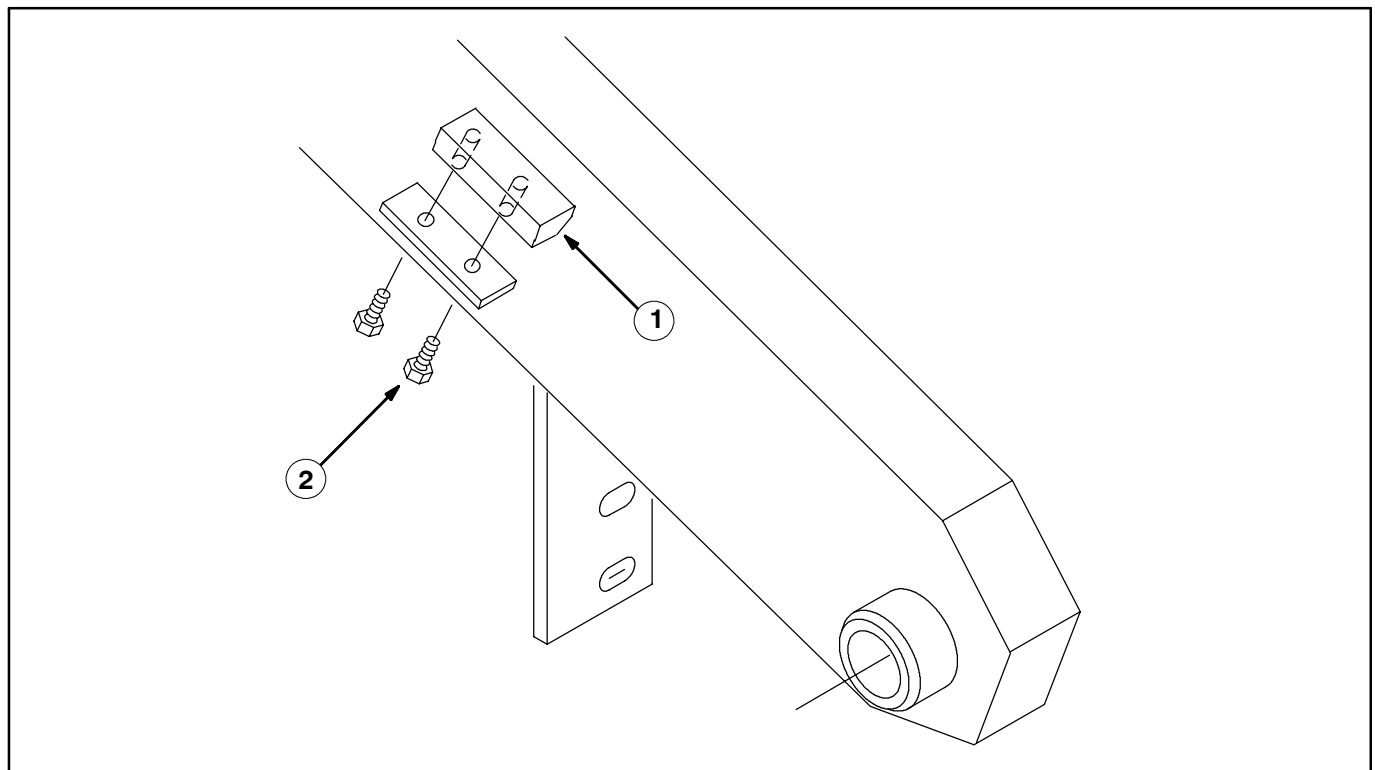


FIG. 3 - Safety Leg Stop Block Installation