



# INSTRUCTION BULLETIN

No. 340547  
Machine: EZ Rider HP,  
7080  
Published: 10-02  
Rev. 00

**NOTE: DO NOT DISCARD the Parts List from the Instruction Bulletin. Place the Parts List in the appropriate place in your machine manual for future reference. Retaining the Parts List will make it easier to reorder individual parts and will save you the cost of ordering an entire kit.**

*NOTE: Numbers in parenthesis ( ) are reference numbers for parts listed in Bill of Materials.*

Installation instructions for **kit number 393110**

## DESCRIPTION:

This kit contains the parts needed to install/replace the stop switch on the model EZ Rider HP and 7080 scrubbers.

Please follow step-by-step instructions.

## SPECIAL TOOLS / CONSIDERATIONS: None

(Estimated time to complete: 1 hour)

## PREPARATION:

(Refer to FIG. 1 thru 3)

**FOR SAFETY: Before leaving or servicing machine, stop on level surface and set parking brake. Then turn off machine and remove key.**

1. Disconnect battery cables from machine.



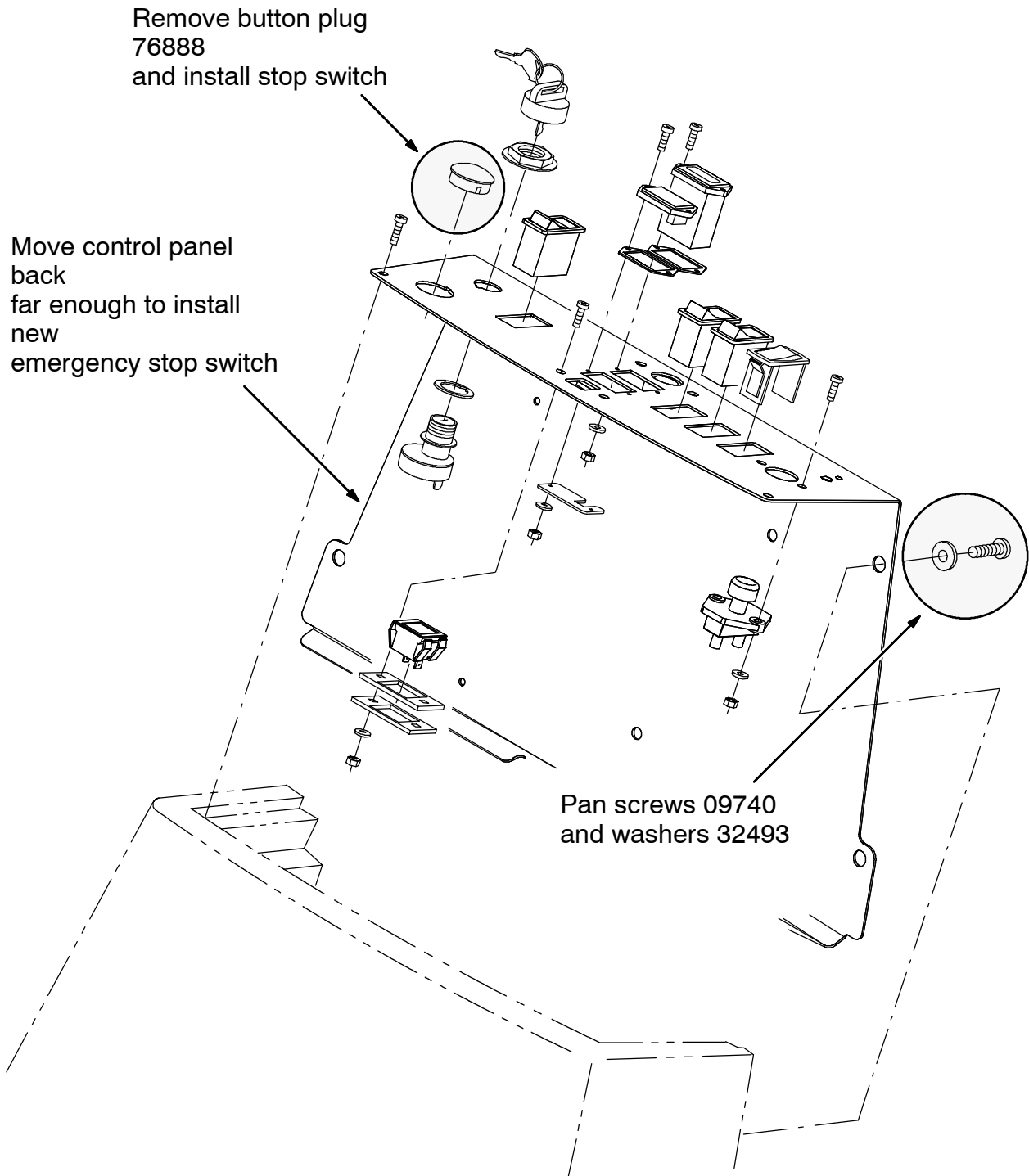
**WARNING: Always disconnect battery cables from machine before working on electrical components.**

## INSTALLATION:

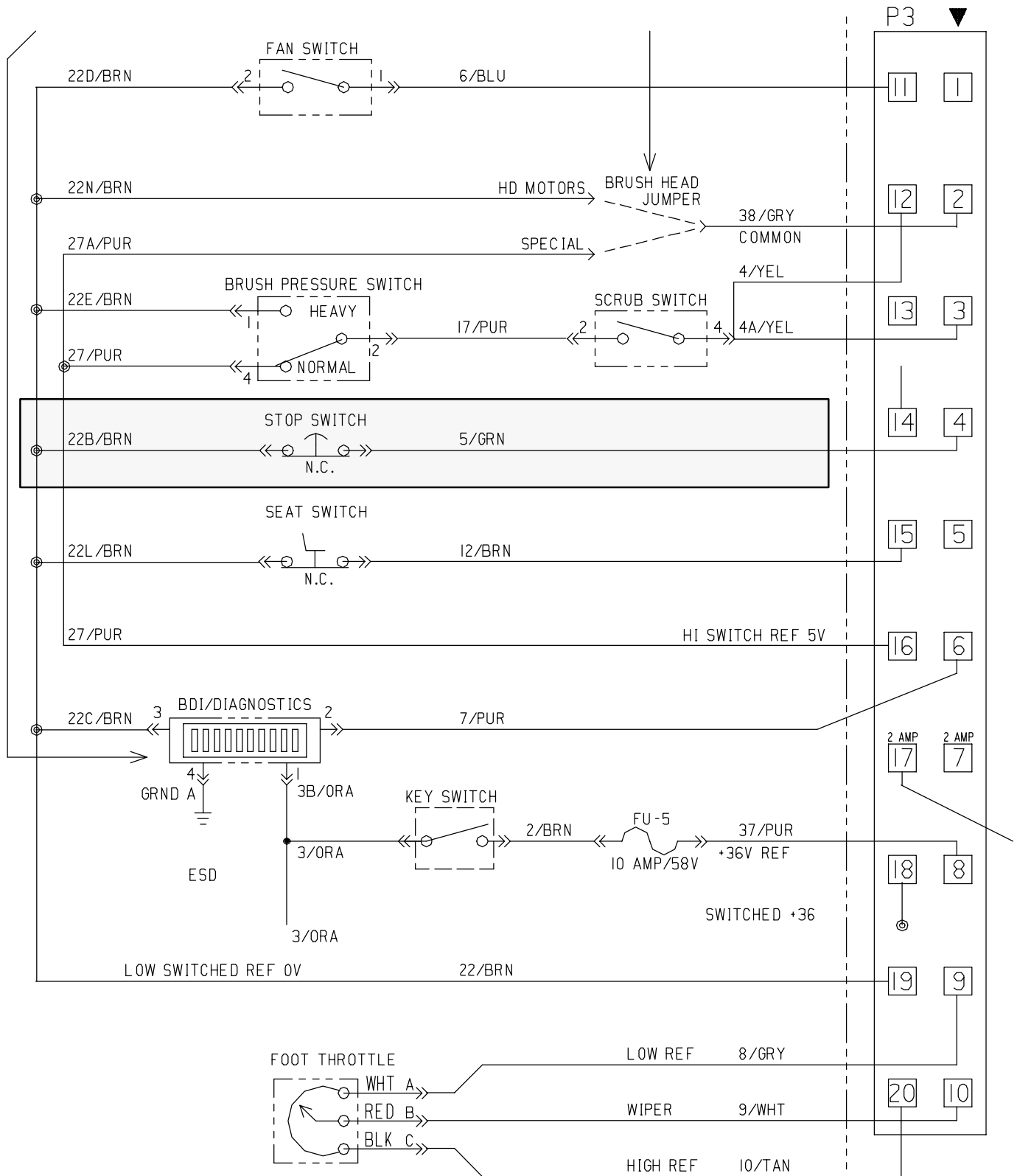
(Refer to FIG. 1 thru 3)

1. Remove and set aside the four pan screws 09740 and washers 01685, holding instrument panel 392827 in place. (Refer to FIG. 1)
2. Pull the instrument panel just far enough away from the machine to install the new emergency stop switch. (Refer to FIG. 1)
3. Remove plug 76888 from the emergency stop switch mounting location in the instrument panel. (Refer to FIG. 1)
4. Install the emergency stop switch (1) and contact switch (2) in the instrument panel. (Refer to FIG. 3)
5. Connect the emergency stop switch (1) to 22B/BRN and 5/GRN in the control panel wiring harness. (Refer to FIG. 2)
6. Secure instrument panel 392827 back in place with set aside pan screws 09740 and washers 01685. (Refer to FIG. 1)

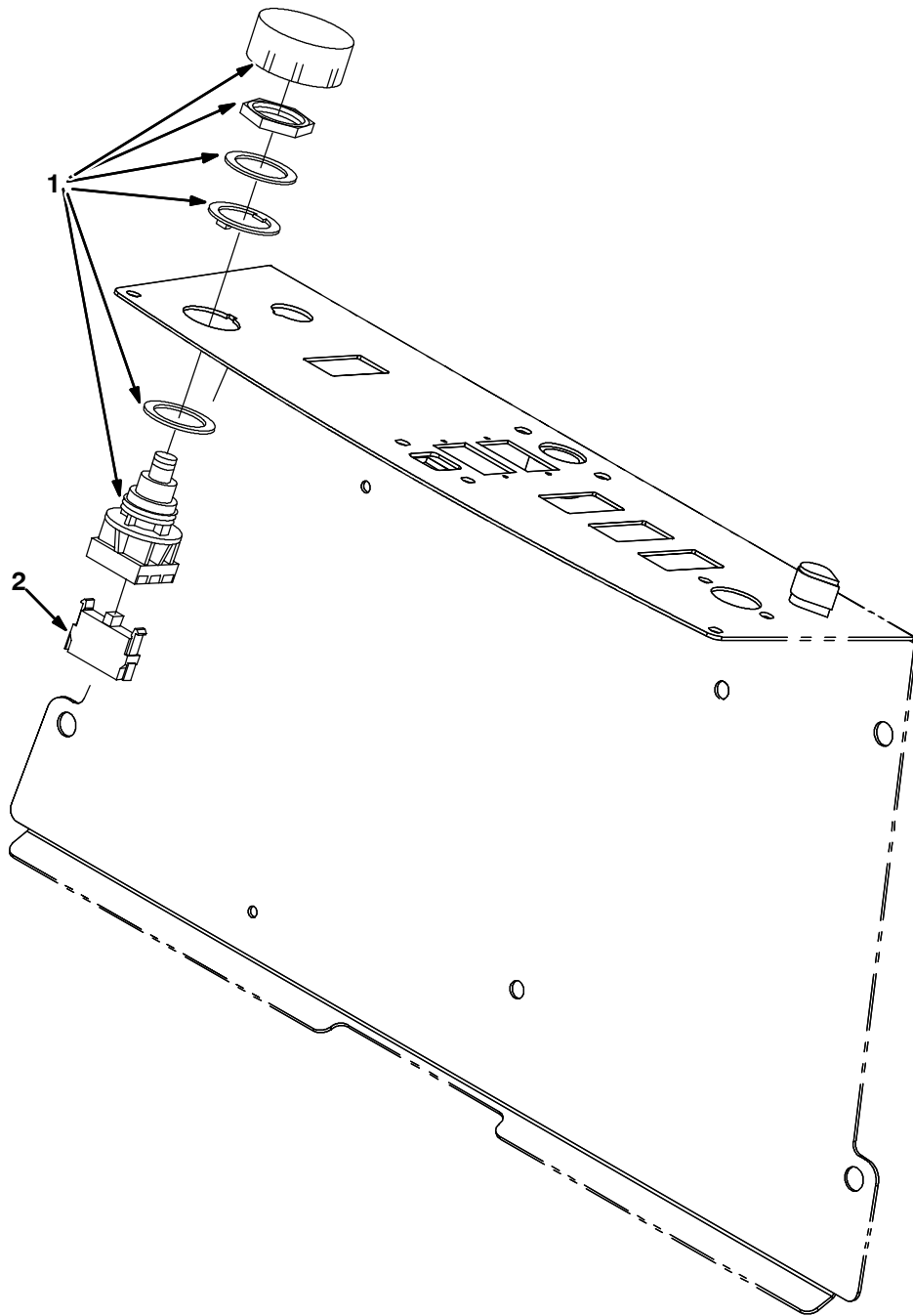
7. Reconnect battery cables to the machine.
8. Turn the machine power on and check the emergency stop switch for proper operation.



**FIG. 1 - Instrument Panel Breakdown**



**FIG. 2 - Electrical Schematic**



**FIG. 3 - Emergency Stop Switch Kit Installation**

**BILL OF MATERIALS FOR STOP SWITCH KIT 393110**

Ref.	TENNANT Part No.	Description	Qty.
1	78553	Switch	1
2	65665	Switch, contact, 12VDC, 10A, NC	1

TENNANT COMPANY  
P. O. Box 1452  
Minneapolis, MN 55440-1452