



INSTRUCTION BULLETIN

No. 340535
Machine: 8300
Published: 12-2009
Rev. 03

NOTE: DO NOT DISCARD the Parts List from the Instruction Bulletin. Place the Parts List in the appropriate place in the machine manual for future reference. Retaining the Parts List will make it easier to reorder individual parts and will save the cost of ordering an entire kit.

NOTE: Numbers in parenthesis () are reference numbers for parts listed in Bill of Materials.

Installation instructions for **kit number 374186**

DESCRIPTION:

This kit contains the parts needed to replace the idler brush arm on the 8300 machine.
Please follow step-by-step instructions.

SPECIAL TOOLS / CONSIDERATIONS: NONE

(Estimated time to complete: 1 hour)

PREPARATION:

(Refer to FIG. 1)

FOR SAFETY: Before leaving or servicing machine, stop on level surface, set parking brake, turn off machine, and remove key.

INSTALLATION:

(Refer to FIG. 1)

1. Unlatch and open the right side main brush door.
2. Remove and set aside the hex screw securing the brush idler plate to the side of the machine.
3. Remove and discard the old idler arm assembly.
4. Mount the new idler plug (3) to the new brush arm (1) with the hex screw (4), washers (5), sleeve (2) and lock nut (6). Tighten mounting hardware to 18.5–24 Nm (15–20 ft lb). (Refer to FIG. 1)
5. Insert the new brush idler plug into the brush end, and secure the new brush arm to the machine with the set aside hex screw. (Refer to FIG. 1)
6. Turn the machine power on. Check the sweeping brush for proper operation.

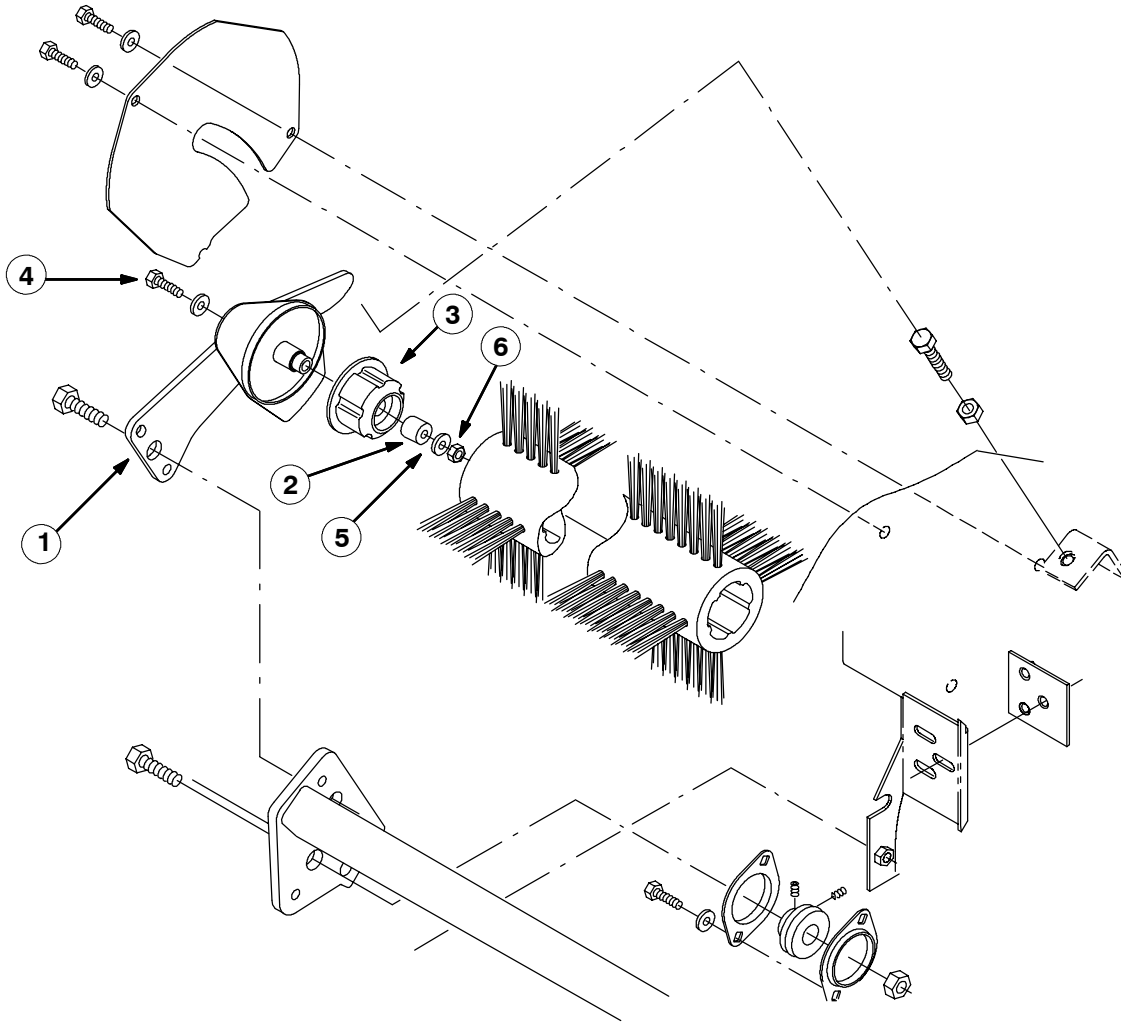


FIG. 1 - New Brush Idler Installation

BILL OF MATERIALS FOR BRUSH ARM KIT 374186

Ref.	TENNANT Part No.	Description	Qty.
1	1056840	Arm wldt, brush	1
2	1009165	Sleeve	1
3	377345	Plug, idler, brush	1
4	06959	Screw, hex, M08 X 1.25 X 90	1
5	32491	Washer, flat, 0.31 STD	2
6	08709	Nut, hex, lock, M08 X 1.25, NL	1

TENNANT COMPANY
P. O. Box 1452
Minneapolis, MN 55440-1452