



INSTRUCTION BULLETIN

No. 340509
Machine: 5700, 7200
Published: 4-02
Rev. 00

NOTE: DO NOT DISCARD the Parts List from the Instruction Bulletin. Place the Parts List in the appropriate place in your machine manual for future reference. Retaining the Parts List will make it easier to reorder individual parts and will save you the cost of ordering an entire kit.

NOTE: Numbers in parenthesis () are reference numbers for parts listed in Bill of Materials.

Installation instructions for **kit number 392221**

DESCRIPTION:

This kit contains the parts needed to replace the 36" squeegee frame on the models 5700 and 7200 scrubbers.

Please follow step-by-step instructions.

SPECIAL TOOLS / CONSIDERATIONS: NONE

(Estimated time to complete: 1 hour)

PREPARATION:

(Refer to FIG. 1, 2 and 3)

1. Place machine on level work surface. Set the machine parking brake (option) if available.

FOR SAFETY: Before leaving or servicing machine, stop on level surface and set parking brake. Then turn off machine and remove key.

5700 SQUEEGEE FRAME REPLACEMENT:

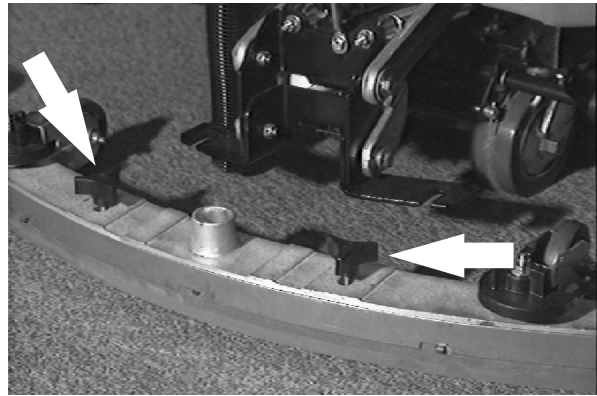
(Refer to FIG. 1, 2 and 3)

REMOVING THE SQUEEGEE ASSEMBLY

1. Raise the squeegee assembly.
2. Remove the squeegee suction hose from the squeegee.

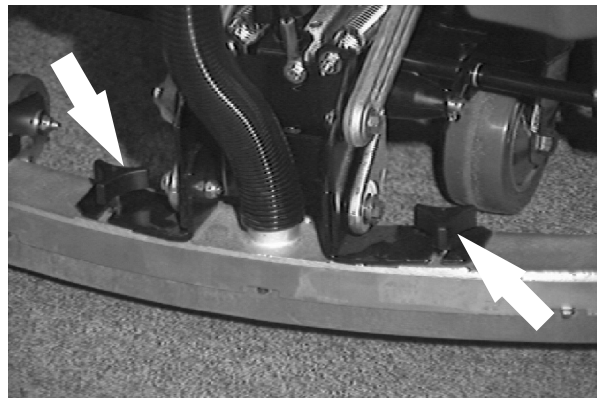


3. Remove and set aside the two mounting knobs.
4. Pull the squeegee off the machine.



INSTALLING THE SQUEEGEE ASSEMBLY

1. Make sure the squeegee pivot is raised.
2. Place the new squeegee frame (1) under the squeegee pivot.
3. Slide the squeegee frame (1) onto the squeegee pivot.
4. Secure the squeegee frame to the pivot with the set aside mounting knobs.
5. Push the squeegee suction hose on the squeegee.



BILL OF MATERIALS FOR SQUEEGEE FRAME REPLACEMENT KIT 392221

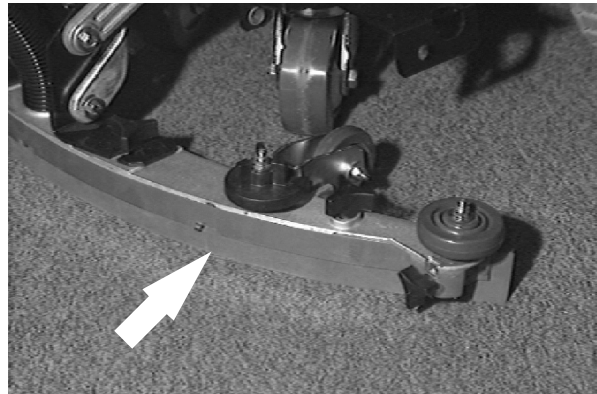
Ref.	TENNANT Part No.	Description	Qty.
1	392206	Frame, sqge	1
2	392211	Plate, blade retainer	1
3	392220	Plate, blade retainer	1

TENNANT COMPANY
P. O. Box 1452
Minneapolis, MN 55440-1452

LEVELING THE SQUEEGEE

Leveling of the squeegee assures even contact the length of the squeegee blade with the surface being scrubbed. Make sure this adjustment is done on an even, level floor.

1. Turn the machine power on.
2. Lower the squeegee.
3. Drive the machine forward, then turn the machine power off.
4. Look at the deflection of the squeegee blade, over the full length of the squeegee blade.



5. If the deflection is not the same over the full length of the blade, turn the squeegee leveling knob counter-clockwise to increase the deflection at the ends of the squeegee.

Turn the squeegee leveling knob clockwise to decrease the deflection at the ends of the squeegee blade.



6. Drive the machine forward again with the squeegee down to check the squeegee blade deflection.
7. Readjust the squeegee blade deflection if necessary.