



INSTRUCTION BULLETIN

No. 340490
Machine: 7300,8300
Published: 6-01/00
System: ELECTRICAL

NOTE: DO NOT DISCARD the Parts List from the Instruction Bulletin. Place the Parts List in the appropriate place in your machine manual for future reference. Retaining the Parts List will make it easier to reorder individual parts and will save you the cost of ordering an entire kit.

NOTE: Numbers in parenthesis () are reference numbers for parts listed in Bill of Materials.

Installation instructions for kit number 387582

SYNOPSIS / PROBLEM:

This kit contains the parts needed to install/replace the propel cable kit on the model 7300 scrubber and 8300 sweeper/scrubber.

Please follow step-by-step instructions.

SPECIAL TOOLS / CONSIDERATIONS: NONE

(Estimated time to complete: 1 hour)

PREPARATION:

(Refer to FIG. 1, 2 and 3)

FOR SAFETY: Before leaving or servicing machine, stop on level surface and set parking brake. Then turn off machine and remove key.

1. Disconnect battery cables from machine.



WARNING: Always disconnect battery cables from machine before working on electrical components.

CONTACTOR AND MOTOR HARDWARE INSTALLATION:

(Refer to FIG. 2 and 3)

NOTE: MACHINES WITH S.N.'S AFTER 3053 ARE ALREADY EQUIPPED WITH CORRECT FUSES AND PROPEL CABLE. CHECK ALL CONNECTION HARDWARE FOR ASSURED TIGHTNESS AND PROCEED TO SECTION 3.

FOR SAFETY: Before leaving or servicing machine, stop on level surface and set parking brake. Then turn off machine and remove key.

1. Raise the rear machine cover, and secure in place with the cover support rod.
2. Disconnect battery cables from machine.



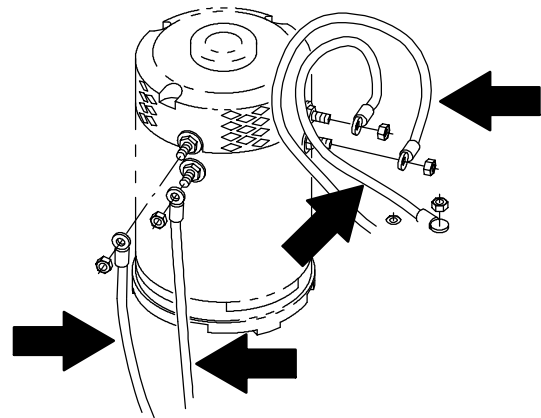
WARNING: Always disconnect battery cables from machine before working on electrical components.

3. Raise the side cover on the left hand side of the machine, and secure in place with the cover support rod.
4. Open the side door on the left hand side of the machine.

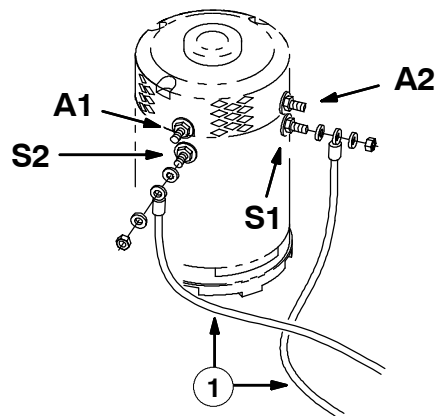
5. Remove and set aside the detergent tank (option) if necessary.
6. Remove and set aside the contactor cover.
7. Remove the drive motor cover panel from inside the operator's compartment. Set the panel and mounting hardware aside.
8. Carefully label or note how all propel motor wires are routed and tied before disconnecting.

NOTE: Once the new hardware and cables are installed, it will be critical that the motor wires are routed and tied up in the same fashion as shown in FIG. 3.

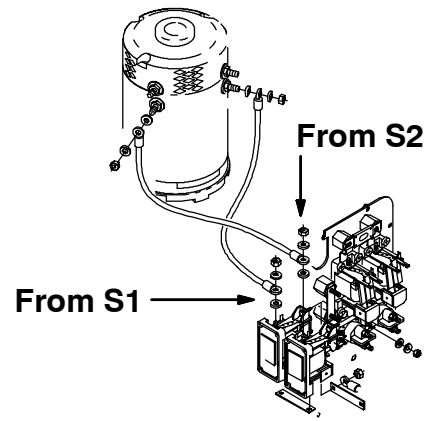
8. Disconnect and remove both 2 gauge and both 4 gauge wires from the propel motor. Leave the terminal nuts on the posts close to the motor. Disconnect the other ends of the 4 gauge wires from the contactors. Disconnect the other ends of the 2 gauge wires from the motor controller. Remove and discard the propel motor wires.



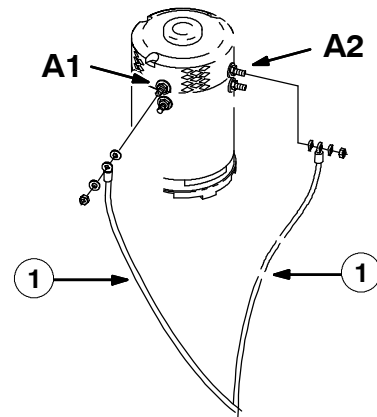
9. Connect one end of each new 4 gauge wire (2), to each of the lower posts (S1 and S2) on the propel motor, with new nuts (6), flat washers (5) and lock washers (4) in sequence shown in FIG. 2. Only hand tighten the mounting hardware at this time. (Refer to FIG 1)



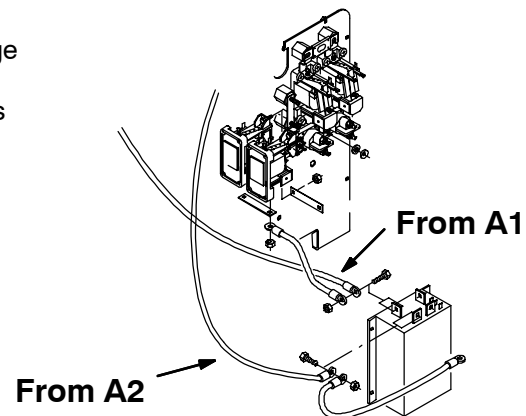
1. Carefully route the 4 gauge wire from post S1 to the inside contactor. Route the 4 gauge wire from post S2 to the outside contactor. Connect the ends of the wires to the contactors with new lock washers (9), flat washers (8) and nuts (7) in sequence shown in FIG. 2. Only hand tighten the mounting hardware at this time. (Refer to FIG 1)



2. Connect one end of each new 2 gauge wire (1), to each of the top posts (A1 and A2) on the propel motor, with new nuts (6), flat washers (5) and lock washers (4) in sequence shown in FIG. 2. Only hand tighten the mounting hardware at this time. (Refer to FIG 1)



3. Carefully route the 2 gauge wire from post A1 to the inside post on the motor controller. Route the 2 gauge wire from post A2 to the outside post on the motor controller. Connect the ends of the wires to the posts on the motor controller with set aside hardware in sequence shown in FIG. 2. Only hand tighten the mounting hardware at this time. (Refer to FIG 1)



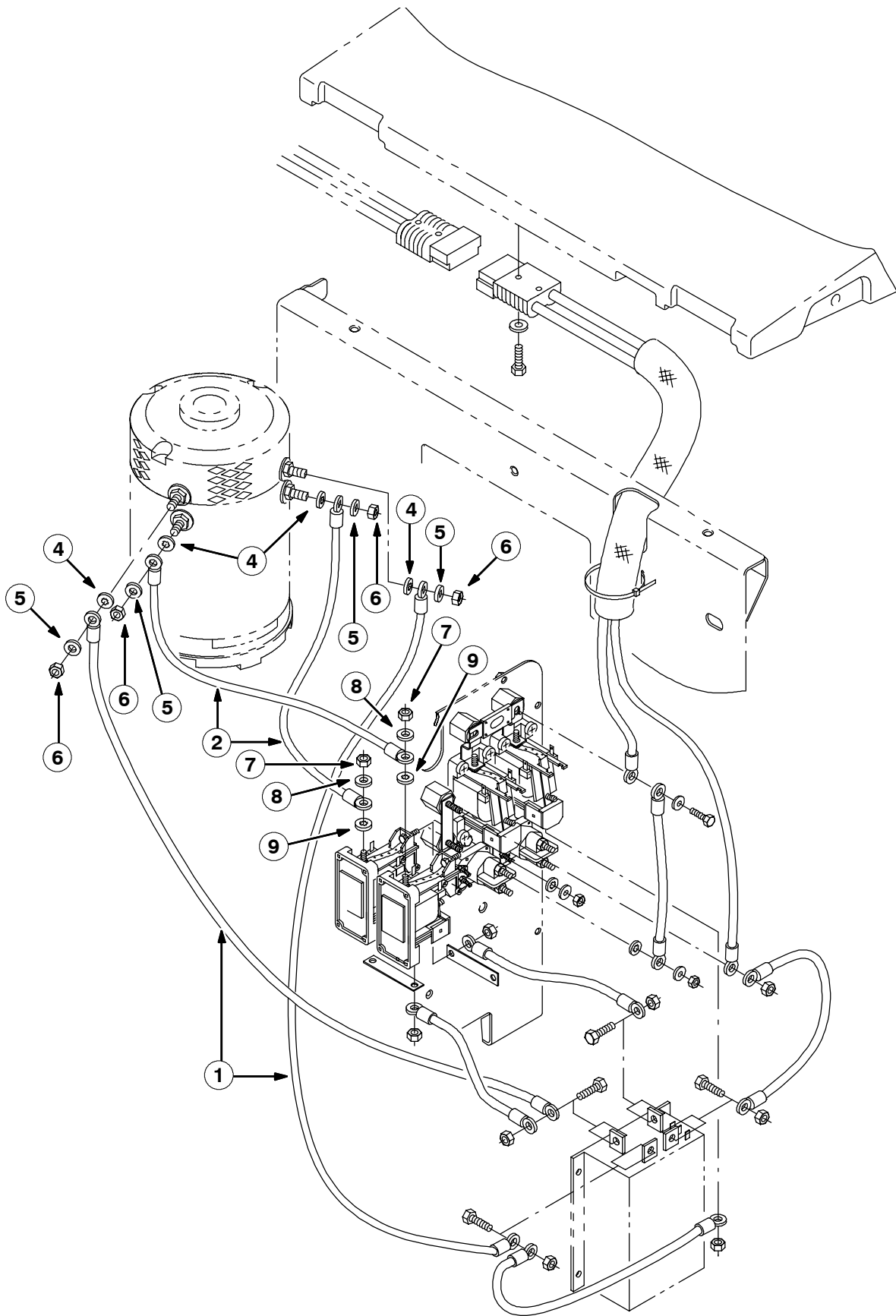


FIG. 1 - NEW CABLE AND HARDWARE INSTALLATION, PROPEL MOTOR
(Refer to FIG. 2 for proper cable routing)

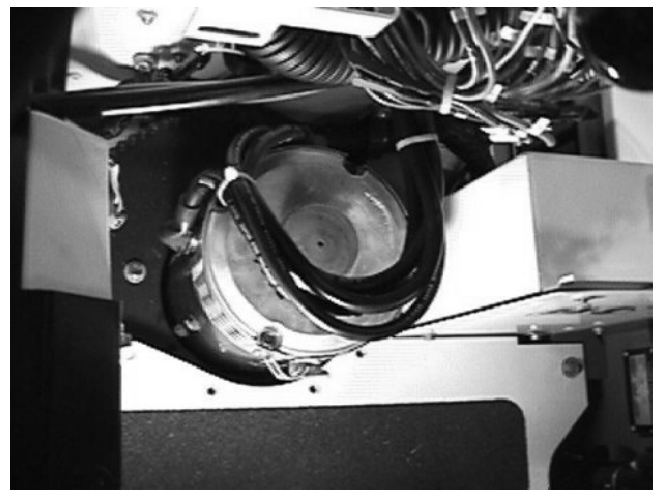


FIG. 2 - NEW CABLE ROUTING, PROPEL MOTOR

9. Check that all new motor wires are routed the same way as shown in figure 2.
(Refer to FIG. 2)

NOTE: Once the new hardware and cables are installed, it will be critical that the motor wires are routed and tied up in the same fashion as shown in FIG. 3.

10. Tighten all mounting hardware to 125 in. lbs.
11. Slide any excess length of the 4 gauge wires into the panel box. Secure the new motor wires with wire ties. (Refer to FIG. 2)

BILL OF MATERIALS FOR PROPEL CABLE KIT 387582

Ref.	TENNANT Part No.	Description	Qty.
1	386804	Wire assy, 02GA 27.0L BLK 0.34H/0.34H	2
2	71529	Wire, 04GA 32.0L BLK 0.31 ring / 0.31 ring	2
3	02076	Boot, 90 deg 0.50D 0.57D X 0.84	4
4	32988	Washer, lock, int 0.38	4
5	32490	Washer, flt, 0.25 std	4
6	39311	Nut, hex, std, M08 X 1.25	4
7	41359	Nut, hex, std, M06 X 1.0	2
8	32483	Washer, flt, 0.25 SAE	2
9	32982	Washer, lock, int, 0.25	2
10	16931	Screw, hex, M08 X 1.25 X 20, 8.8	2
11	08709	Nut, hex, lock, M08 X 1.25, NL	2

TENNANT COMPANY
P. O. Box 1452
Minneapolis, MN 55440-1452