



# INSTRUCTION BULLETIN

No. 340487  
Machine: 7100,7200,7300  
8200,8210,8300  
Published: 6-01/00  
System: SCRUBBING

**NOTE: DO NOT DISCARD the Parts List from the Instruction Bulletin. Place the Parts List in the appropriate place in your machine manual for future reference. Retaining the Parts List will make it easier to reorder individual parts and will save you the cost of ordering an entire kit.**

*NOTE: Numbers in parenthesis ( ) are reference numbers for parts listed in Bill of Materials.*

Installation instructions for kit number 375429, 375430 and 375431

## **SYNOPSIS / PROBLEM:**

This kit contains the parts needed to replace the solution and recovery tank level switches on the models 7100/7200, 8200/8210 and 7300/8300 scrubbers and sweeper/scrubbers. Please follow step-by-step instructions.

## **SPECIAL TOOLS / CONSIDERATIONS: Metri-Pac wire test harness, voltmeter**

(Estimated time to complete: 1 hour)

## **PREPARATION:**

(Refer to FIG. 1 thru 7)

**FOR SAFETY: Before leaving or servicing machine, stop on level surface and set parking brake. Then turn off machine and remove key.**

1. Disconnect battery cables from machine.



**WARNING: Always disconnect battery cables from machine before working on electrical components.**

## **SOLUTION TANK PRESSURE SWITCH REPLACEMENT, 7100:**

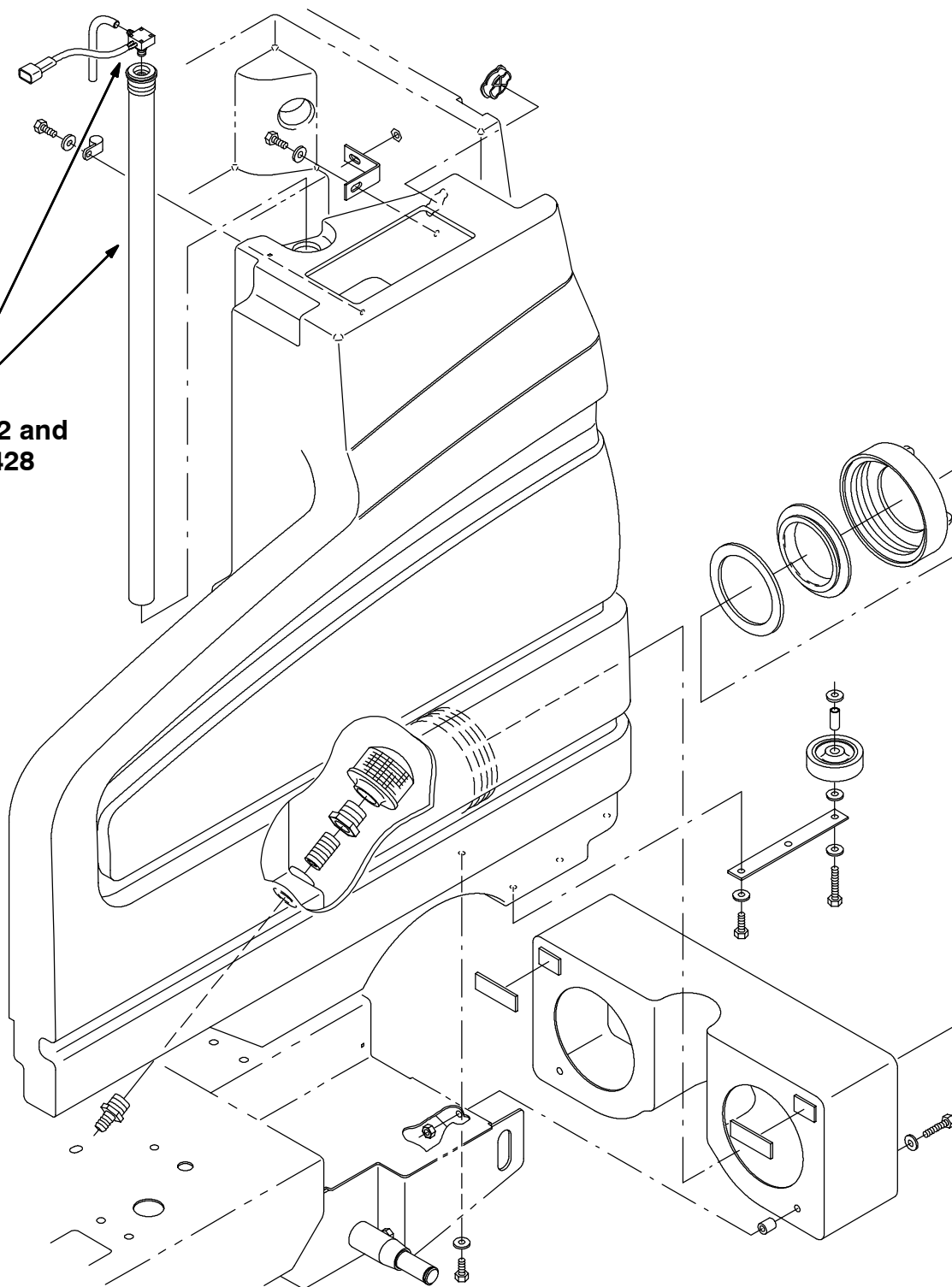
(Refer to FIG. 1)

1. Open the tank cover on the rear of the machine and locate the pressure switch 385732 and 3/4 inch tube 386966 on the top of the solution tank. (Refer to FIG. 1)
2. Disconnect the old pressure switch from the main wire harness.
3. Remove and discard the old pressure switch and tube from the solution tank.

*NOTE: Lubricate the tube switch assemblies and hoses with a small amount of liquid soap for easier installation.*

4. Install the new tube/switch assembly 375428 in the solution tank switch opening.  
(Refer to FIG. 1)
5. Connect the new tube/switch assembly 375428 to the main harness. Close the tank cover. Check the new switch for proper operation.

**Replace 385732 and  
386966 w/ 374428**



**FIG. 1 - SOLUTION TANK PRESSURE SWITCH INSTALLATION, 7100**

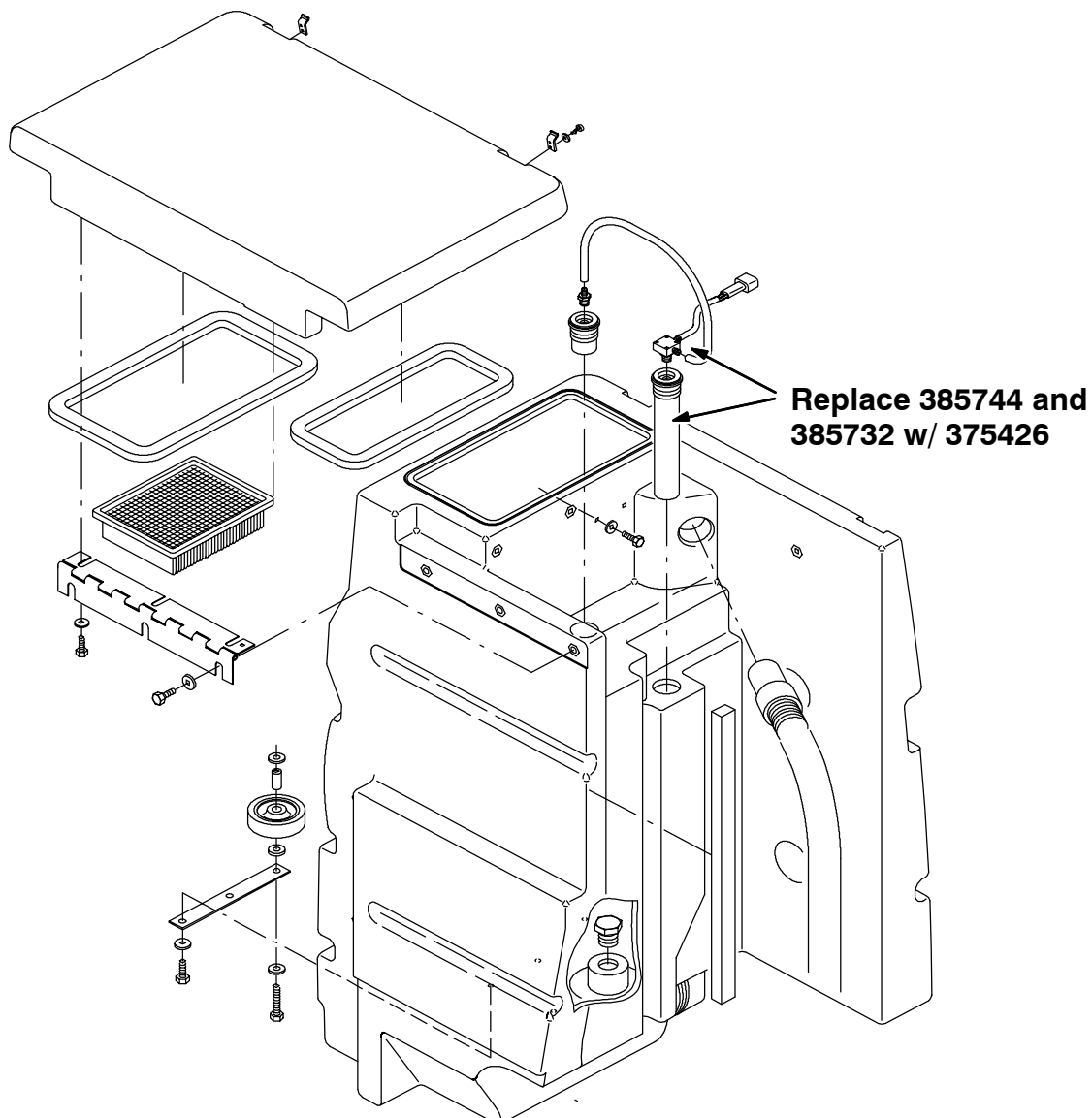
## RECOVERY TANK PRESSURE SWITCH REPLACEMENT, 7100:

(Refer to FIG. 2)

1. Remove and set aside the tank cover, cable and mounting bolts.
2. Disconnect the vacuum fan from the main harness. Remove and set aside the vacuum fan and mounting hardware.
3. Locate the original float switch in the recovery tank. (Refer to FIG. 2)
4. Disconnect and remove the float switch and 8 inch tube from the recovery tank.  
(Refer to FIG. 2)

**NOTE:** *Lubricate the tube/switch assemblies and hoses with a small amount of liquid soap for easier installation.*

5. Install the new 8 inch tube/switch assembly 375426 in the recovery tank switch opening. Connect the switch to the main harness. (Refer to FIG. 2)
6. Replace and reconnect the vacuum fan to the main harness. Replace the tank cover, cable and mounting hardware.



**FIG. 2 - RECOVERY TANK PRESSURE SWITCH INSTALLATION, 7100**

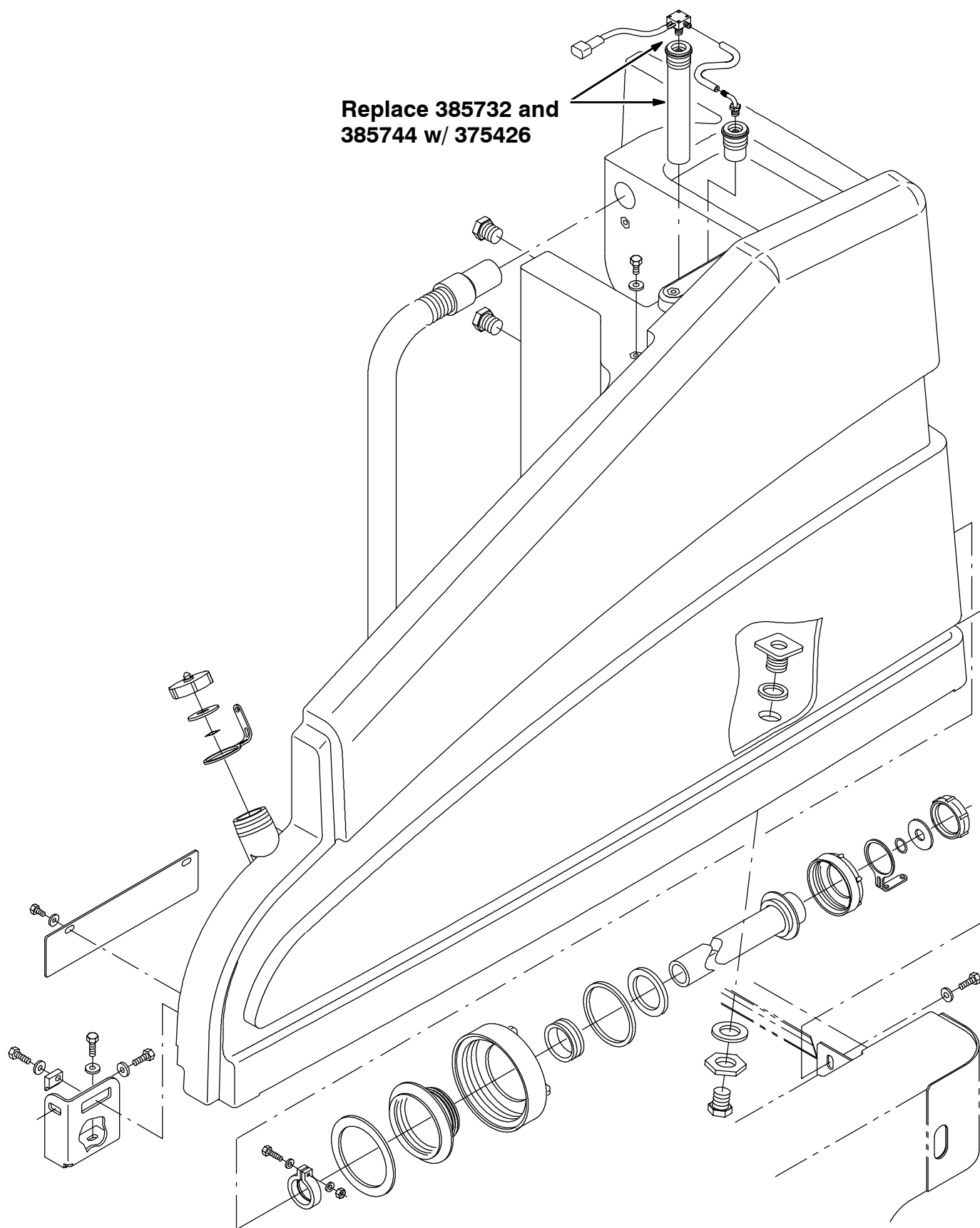
## **RECOVERY TANK PRESSURE SWITCH REPLACEMENT, 7200:**

**(Refer to FIG. 3)**

1. Remove and set aside the tank cover, cable and mounting bolts.
2. Disconnect the vacuum fan from the main harness. Remove and set aside the vacuum fan and mounting hardware.
3. Locate the original float switch 385732 in the recovery tank. (Refer to FIG. 3)
4. Disconnect and remove the float switch 385732 and vacuum tube 385744 from the recovery tank. (Refer to FIG. 3)

*NOTE: Lubricate the tube/switch assemblies and hoses with a small amount of liquid soap for easier installation.*

5. Install the new 8 inch tube/switch assembly 375426 in the recovery tank switch opening. (Refer to FIG. 3)
6. Replace and reconnect the vacuum fan to the main harness.
7. Replace the tank cover, cable and mounting hardware.



**FIG. 3 - NEW RECOVERY TANK SWITCH INSTALLATION, 7200**

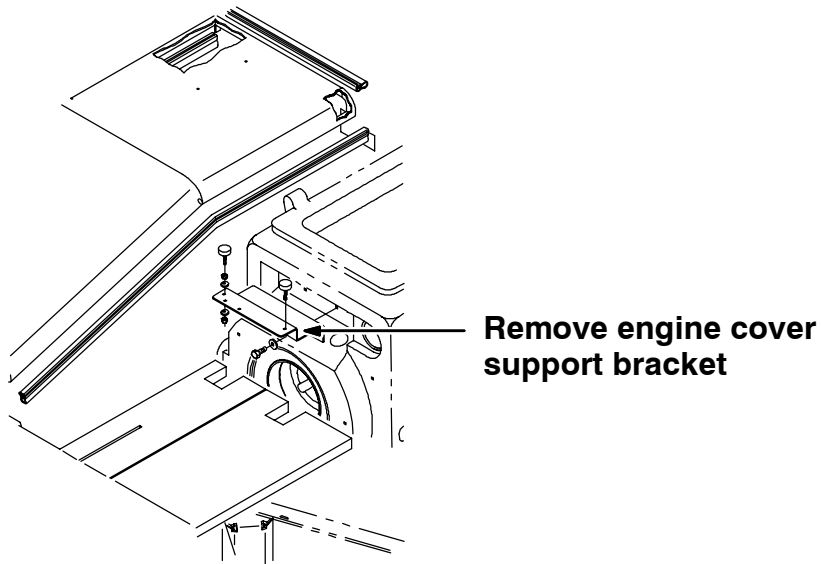
## RECOVERY TANK PRESSURE SWITCH REPLACEMENT, 8200/8210:

(Refer to FIG. 4 and 5)

1. Open the engine cover, and the engine side door.
2. Remove and set aside the engine cover support bracket to access the float switches on the recovery tank. (Refer to FIG. 1 and 2)
3. Locate the original float switches on the recovery tank. (Refer to FIG. 2)
4. Disconnect and remove the float switch 385730 and 14 inch tube 385747 from the recovery tank. (Refer to FIG. 5)

*NOTE: Lubricate tube/switch assemblies and hoses with a small amount of liquid soap for easier installation.*

5. Install the new 14 inch tube/switch assembly 375427 in the recovery tank switch opening. (Refer to FIG. 5)



**FIG. 4 - ENGINE COVER SUPPORT BRACKET REMOVAL, 8200/8210**

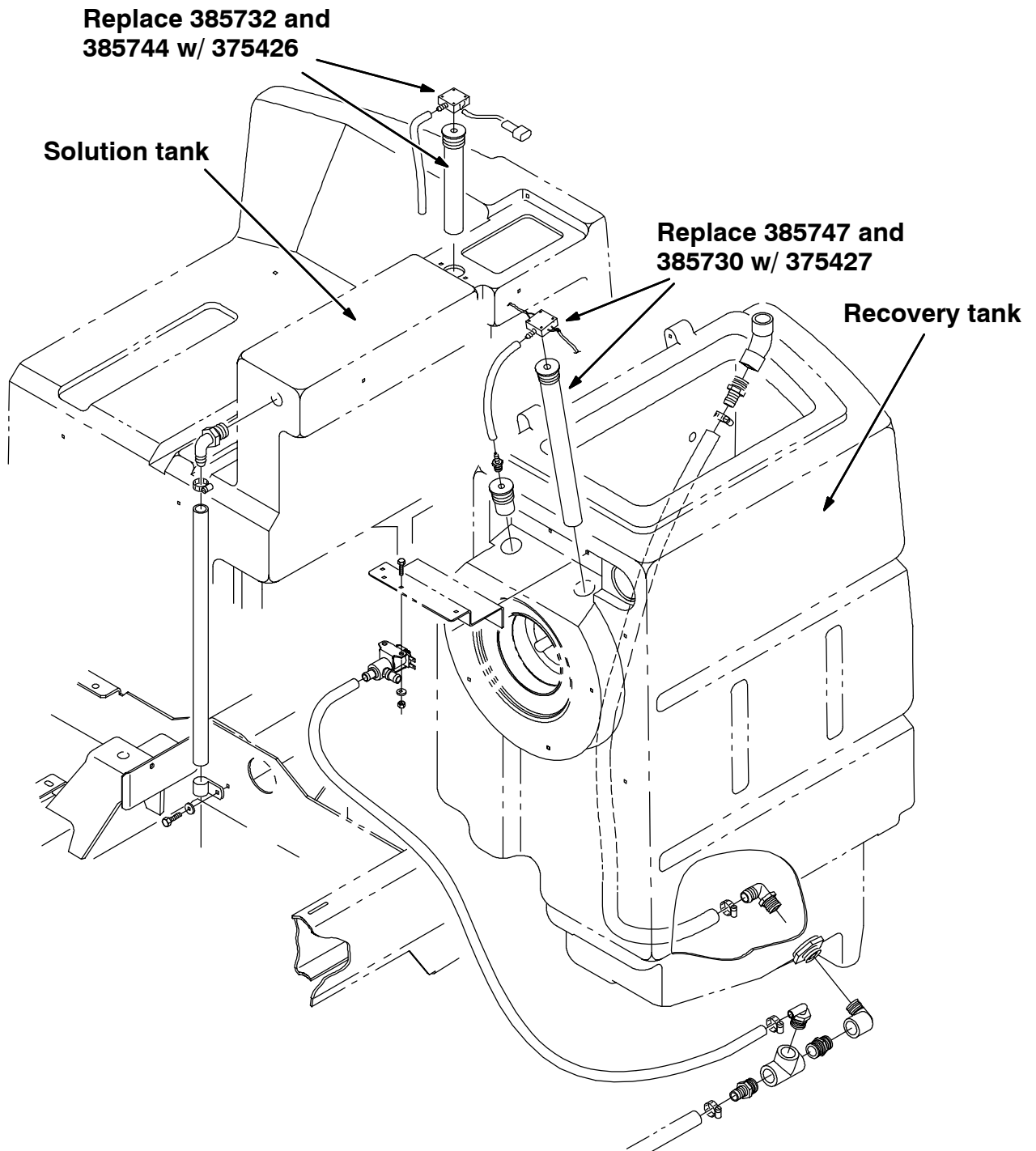
## SOLUTION TANK PRESSURE SWITCH REPLACEMENT, 8200/8210:

(Refer to FIG. 5)

1. Open the solution tank cover, and locate the float switch 385732.
2. Disconnect the float switch 385732 from the main harness. (Refer to FIG. 5)
3. Remove the float switch 385732 and 8 inch tube 385744 from the solution tank. (Refer to FIG. 5)

*NOTE: Lubricate tube/switch assemblies and hoses with a small amount of liquid soap for easier installation.*

4. Install the new 8 inch tube/switch assembly 375426 in the solution tank switch opening. (Refer to FIG. 5)
5. Connect the new 8 inch tube/switch assembly 375426 to the main harness.



**FIG. 5 - SOLUTION AND RECOVERY TANK PRESSURE SWITCH INSTALLATION,  
8200/8210**

## **RECOVERY TANK PRESSURE SWITCH REPLACEMENT, 7300/8300:**

**(Refer to FIG. 6)**

1. Open the recovery tank cover, and locate the float switch 385732 and 8 inch tube 375744.
2. Disconnect and remove the float switch 385732 and 8 inch tube 385744 from the recovery tank. (Refer to FIG. 6)

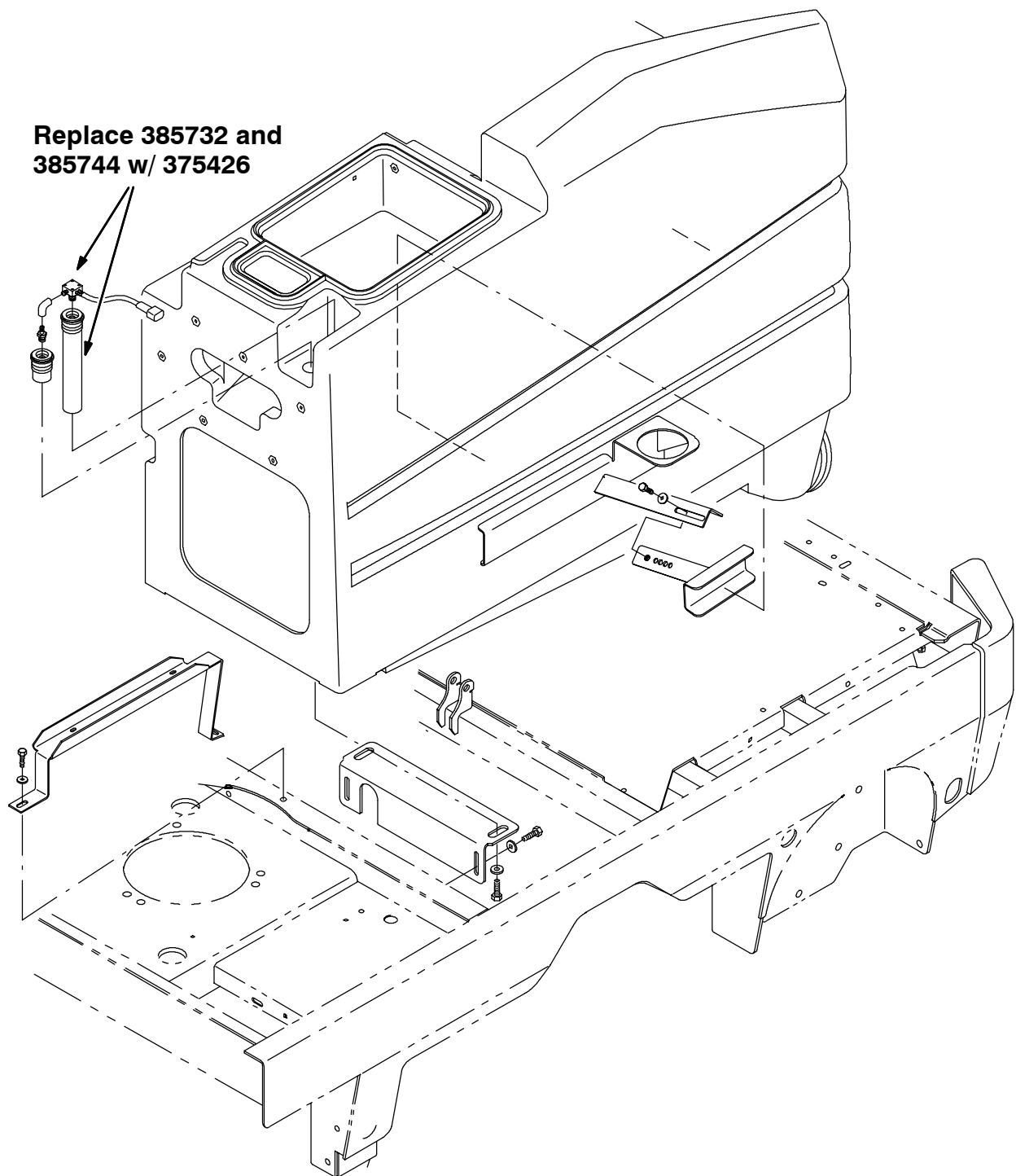
*NOTE: Lubricate tube/switch assemblies and hoses with a small amount of liquid soap for easier installation.*

3. Install the new 8 inch tube/switch assembly 375426 in the recovery switch opening. Connect the new switch to the main wire harness. (Refer to FIG. 6)
4. Close the recovery tank cover.

### **NOTE: TO CONFIRM PROPER PRESSURE SWITCH OPERATION, PERFORM THE FOLLOWING:**

1. Remove the switch from the tank to be tested. Solution tank has 8 inch tube/switch assembly. Recovery tank has 14 inch tube/switch assembly.  
For 8 inch tube/switch assembly – Measure and place a mark at 4 inches from the bottom of the tube.  
For 14 inch tube/switch assembly – Measure and place marks at 4 and 10 inches from the bottom of the tube.
2. Connect the switch to an ohmmeter with the metri-pac test wire harness (375023), or use clips to directly clamp on to the switch harness. The ohmmeter should read O.L. before switch is activated.
3. Slowly lower the switch into a 5 gallon bucket of water filled with roughly twelve inches of water. The switch should read below 1 ohm when activated at the 4 or 10 inch level.
4. Hold the tube at the 4 in or 10 in level for 30 seconds. If there are no leaks in the tube/switch assembly, the ohm reading will hold steady. If a leak is present, or if the switch is malfunctioning, the ohm reading will show O.L. (open loop).





**FIG. 6 - SOLUTION TANK PRESSURE SWITCH INSTALLATION, 7300/8300**

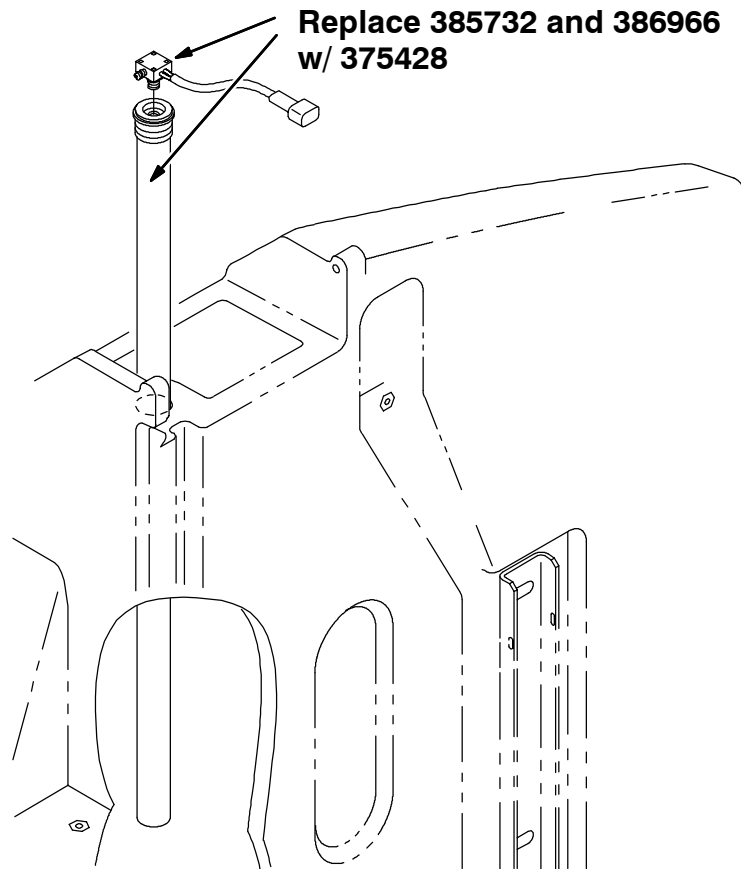
## **SOLUTION TANK PRESSURE SWITCH REPLACEMENT, 7300/8300:**

(Refer to FIG. 7)

1. Open the solution tank cover, and locate the float switch 385732 and 34 inch tube 386966.
2. Disconnect and remove the float switch 385732 and 34 inch tube 386966 from the recovery tank. (Refer to FIG. 7)

*NOTE: Lubricate tube/switch assemblies and hoses with a small amount of liquid soap for easier installation.*

3. Install the new 34 inch tube/switch assembly 375428 in the solution tank switch opening. Connect the new switch to the main wire harness. (Refer to FIG. 6)
4. Notice that the tube/ switch assembly has HIGH and LOW pressure settings. (Refer to FIG. 6)
5. Close the recovery tank cover. Check the new 34 inch tube/switch assembly 375428 for proper operation .



**FIG. 7 - RECOVERY TANK PRESSURE SWITCH INSTALLATION, 7300/8300**

**BILL OF MATERIALS FOR ES LEVEL PRESSURE SWITCH KIT 375429**

<b>Ref.</b>	<b>TENNANT Part No.</b>	<b>Description</b>	<b>Qty.</b>
1	375426	Switch assy, press 3 inch, 8" tube	1

**BILL OF MATERIALS FOR ES LEVEL PRESSURE SWITCH KIT 375430**

<b>Ref.</b>	<b>TENNANT Part No.</b>	<b>Description</b>	<b>Qty.</b>
2	375427	Switch assy, dual press, 14" tube	1

**BILL OF MATERIALS FOR ES LEVEL PRESSURE SWITCH KIT 375431**

<b>Ref.</b>	<b>TENNANT Part No.</b>	<b>Description</b>	<b>Qty.</b>
2	375428	Switch assy, press 3 inch, 34" tube	1

TENNANT COMPANY  
P. O. Box 1452  
Minneapolis, MN 55440-1452