



INSTRUCTION BULLETIN

No. 340479
Machine: 6100/6200
Published: 2-01/00
System: ENGINE

NOTE: DO NOT DISCARD the Parts List from the Instruction Bulletin. Place the Parts List in the appropriate place in your machine manual for future reference. Retaining the Parts List will make it easier to reorder individual parts and will save you the cost of ordering an entire kit.

NOTE: Numbers in parenthesis () are reference numbers for parts listed in Bill of Materials.

Installation instructions for kit number 384162

SYNOPSIS / PROBLEM:

This kit contains the parts needed to replace the engine solenoid on the model 6100 or 6200 sweeper, and will help reduce possible starting problems.

Please follow step-by-step instructions.

SPECIAL TOOLS / CONSIDERATIONS: STROBE TACHOMETER

(Estimated time to complete: 1 hour)

PREPARATION:

(Refer to FIG. 1 and 2)

FOR SAFETY: Before leaving or servicing machine, stop on level surface and set parking brake. Then turn off machine and remove key.

1. Lift the seat support and secure in place with the support prop rod. Remove the side shroud from the left hand side of the machine. Set the shroud aside.
2. Disconnect the battery cables from machine.



WARNING: Always disconnect battery cables from machine before working on electrical components.

3. Locate the old solenoid on top of the motor, above the air filter.

INSTALLATION:

(Refer to FIG. 1 and 2)

1. Disconnect the solenoid wires from the main harness.
2. Remove and discard the old solenoid and mounting hardware.
3. Install the two new snap terminals 383820 on the wire ends of the new solenoid.
4. Install the new solenoid 384448 with hex screws 87308 and washers 32982. Mount the solenoid in the middle of the slot on the mounting bracket. Hand tighten the mounting hardware.
5. Connect the solenoid wires to the main wiring harness.
6. Reconnect the battery cables to the machine. Start the machine.

7. Check the engine RPM with the main brush down and the vacuum on. The recommended RPM for each machine is:

Model 6100 = 2,200 RPM Model 6200 = 2,500 RPM.

Adjust the solenoid in or out to find the best starting performance. Tighten the solenoid mounting hardware after adjusting.

8. Reinstall the side shroud on the left hand side of the machine. Lower the seat support, and check the machine for proper operation.

BILL OF MATERIALS FOR ENGINE SOLENOID KIT 384162

Ref.	TENNANT Part No.	Description	Qty.
1	384448	Solenoid, 12VDC, Engine	1
2	383820	Terminal, snap, 0.156M	2
3	87308	Screw, hex, M06 X 1.0 X 12, 8.8	2
4	32982	Washer, lock, int, 0.25	2

TENNANT COMPANY
P. O. Box 1452
Minneapolis, MN 55440-1452

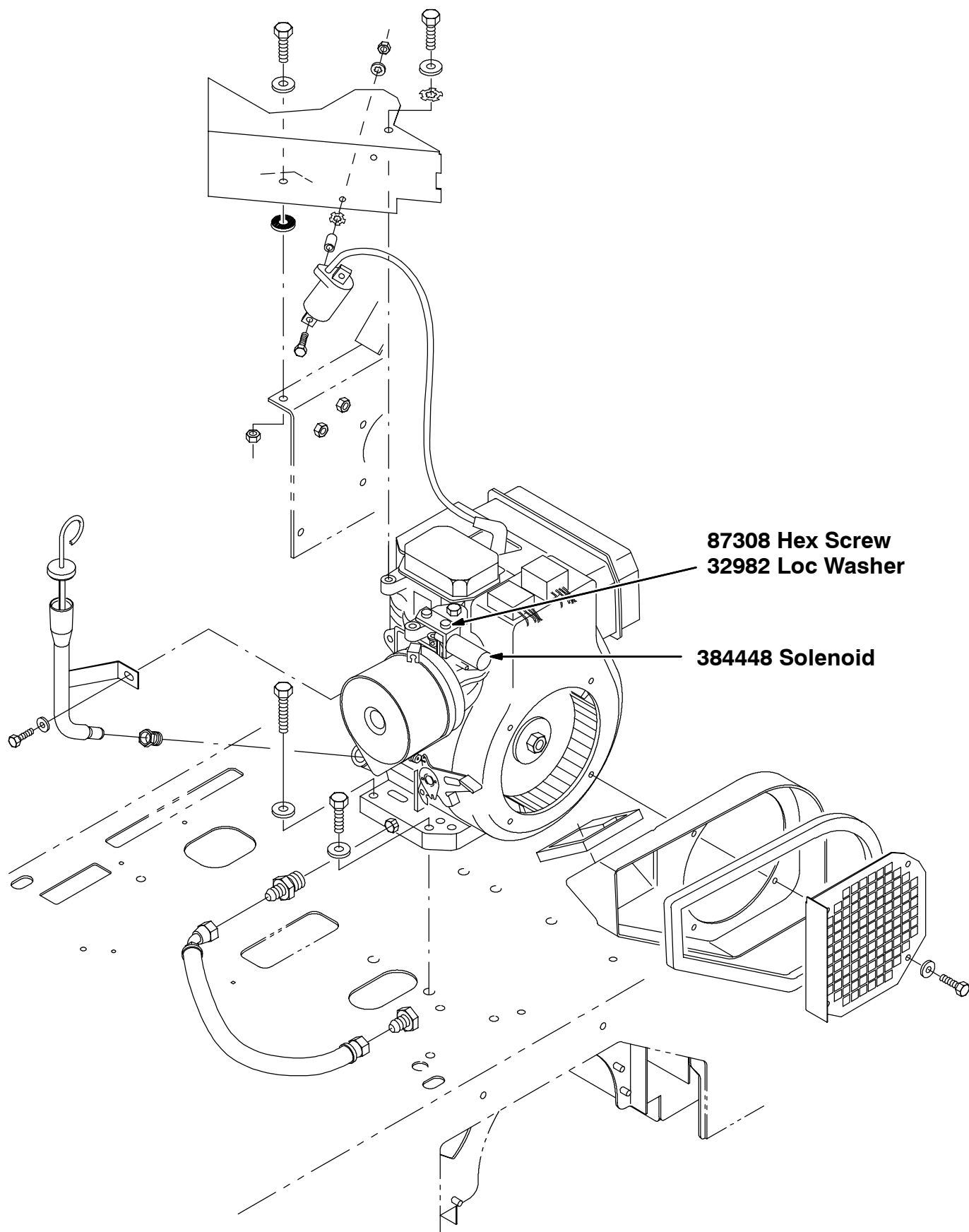


FIG. 1 - Engine Group, 6100

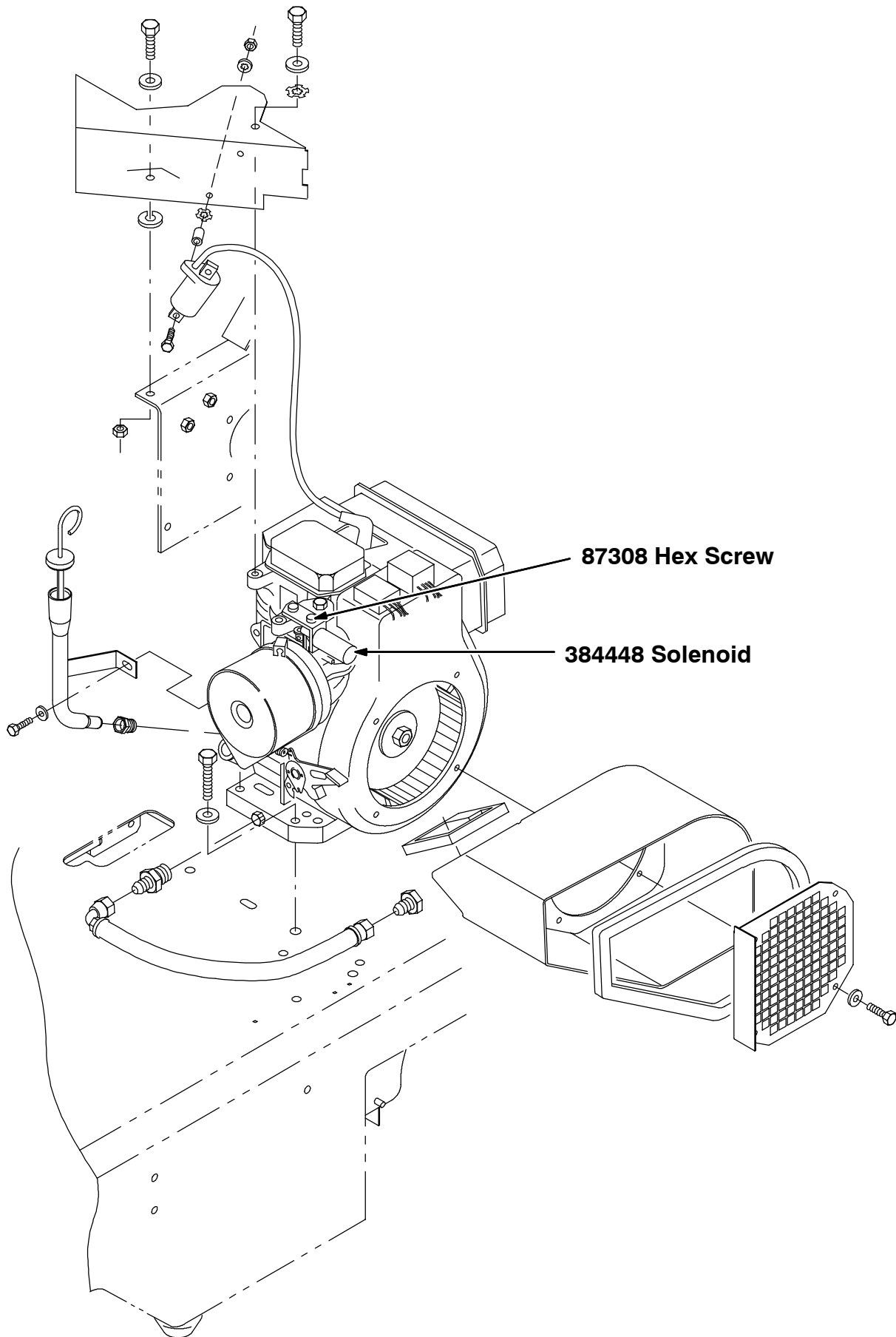


FIG. 2 - Engine Group, 6200